



---

# Customer information packet

## ECP4313T-5

75HP, 3555RPM, 3PH, 60HZ, 365TS, TEFC, F1

Class - None

Division - Division II

## Specifications

Enclosure	TEFC
Frame	365TS
Frame Material	Iron
Frequency	60.00 Hz
Haz Area Class and Group	None
Haz Area Division	Division II
Motor Letter Type	Three Phase
Output @ Frequency	75.000 HP @ 60 HZ
Phase	3
Synchronous Speed @ Frequency	3600 RPM @ 60 HZ
Voltage @ Frequency	575.0 V @ 60 HZ
Agency Approvals	CCSAUSEEV
Ambient Temperature	40 °C
Auxiliary Box	NO AUXILLARY BOX
Base Indicator	Rigid
Bearing Grease Type	Polyrex EM (-20F +300F)
Constant Torque Speed Range	10-60
Current @ Voltage	65.500 A @ 575.0 V
Design Code	B
Drip Cover	No Drip Cover
Duty Rating	CONT
Efficiency @ 100% Load	93.6 %
Enclosure Modification	Severe Duty Features
Feedback Device	NO FEEDBACK
Haz Area Temp Code	T3
Heater Indicator	No Heater
High Voltage Full Load Amps	65.5 a
Insulation Class	F
Inverter Code	Inverter Ready
KVA Code	F
Lifting Lugs	Standard Lifting Lugs
Motor Lead Quantity/Wire Size	3 @ 4 AWG

## Part detail

Revision	D
Type	AC
Mech. spec.	
Base	
Status	PRD/A
Elec. spec.	A36WG1546
Layout	617428-298
Eff. date	10-24-2024
CD Diagram	416820-036
Poles	02
Leads	3#4
Proprietary	False
Created date	10-01-2019

<b>Motor Standards</b>	NEMA
<b>Motor Type</b>	A36068M
<b>Mounting Arrangement</b>	F1
<b>Number of Poles</b>	2
<b>Overall Length</b>	31.35 IN
<b>Power Factor</b>	92
<b>Product Family</b>	General Industrial
<b>Pulley End Bearing Type</b>	Ball
<b>Pulley Face Code</b>	Standard
<b>Service Factor</b>	1.15
<b>Shaft Diameter</b>	1.875 IN
<b>Shaft Ground Indicator</b>	No Shaft Grounding
<b>Shaft Rotation</b>	Reversible
<b>Shaft Slinger Indicator</b>	Shaft Slinger
<b>Speed</b>	3555 rpm
<b>Speed Code</b>	Single Speed
<b>Starting Method</b>	Direct on line
<b>Thermal Device - Bearing</b>	None
<b>Thermal Device - Winding</b>	None

**Nameplate**

<b>NP2496L</b>	
MOBIL POLYREX EM	

---

**000901002AAA**

---

IP55 CONSTRUCTION


---

**NP3238**

<b>CAT NO</b>	ECP4313T-5	<b>SPEC NO.</b>	A36-7806-1546						
<b>HP</b>	75	<b>AMPS</b>	65.5	<b>VOLTS</b>	575	<b>DESIGN</b>	B		
<b>FRAME</b>	365TS	<b>RPM</b>	3555	<b>HZ</b>	60	<b>AMB</b>	40	<b>SF</b>	1.15
<b>D.E. BRG.DATA</b>	6313	<b>O.D.E. BRG.DATA</b>	6313	<b>PH</b>	3	<b>DUTY</b>	CONT	<b>INSUL.CLASS</b>	F
<b>D.E. BRG.</b>	65BC03J30X	<b>TYPE</b>	P	<b>ENCL</b>	TEFC	<b>CODE</b>	F		
<b>O.D.E. BRG.</b>	65BC03J30X	<b>POWER FACTOR</b>	92	<b>NEMA NOM EFFICIENCY</b>	93.6				
<b>3/4 LOAD EFF.</b>	93.8	<b>MAX CORR KVAR</b>	6.5	<b>GUARANTEED EFFICIENCY</b>	92.4				
<b>TEMP CODE</b>	T3	<b>TEMP =</b>	200						
<b>CHP HZ</b>	60-75	<b>CT HZ</b>	10-60	<b>VT HZ</b>	0-60				
<b>INVERTER-TEMP-CODE</b>	T3								
<b>SER.NO.</b>		<b>MOTOR WEIGHT</b>							

REL. S. O.	FRAME	HP	TYPE	PHASE/ HERTZ	RPM	VOLTS
	365TSD	75	P	3/60	3555	575
AMPS	DUTY	AMB <sup>o</sup> C/ INSUL.	S. F.	NEMA DESIGN	CODE LETTER	ENCL.
65.5	CONT	40/F	1.15	B	F	TEFC
E/S	ROTOR	TEST S. O.	TEST DATE	STATOR RES. @25 <sup>o</sup> C (BETWEEN LINES)		
-	418141005TE	---	---	.116		

**PERFORMANCE**

LOAD	HP	AMPERES	RPM	% POWER FACTOR	% EFFICIENCY
NO LOAD	0	12.3	3600	12.6	0
1/4	18.8	19.9	3589	79.0	89.2
2/4	37.5	33.2	3578	91.0	93.0
3/4	56.2	48.8	3567	92.1	93.8
4/4	75.0	65.5	3555	91.6	93.6
5/4	93.8	82.7	3542	91.2	93.1

**SPEED TORQUE**

	RPM	TORQUE % FULL LOAD	TORQUE LB.-FT.	AMPERES
LOCKED ROTOR	0	212	235	420
PULL UP	2130	178	197	357
BREAKDOWN	3395	256	284	237
FULL LOAD	3555	100	111	65.5

AMPERES SHOWN FOR 575. VOLT CONNECTION. IF OTHER VOLTAGE CONNECTIONS ARE AVAILABLE, THE AMPERES WILL VARY INVERSELY WITH THE RATED VOLTAGE

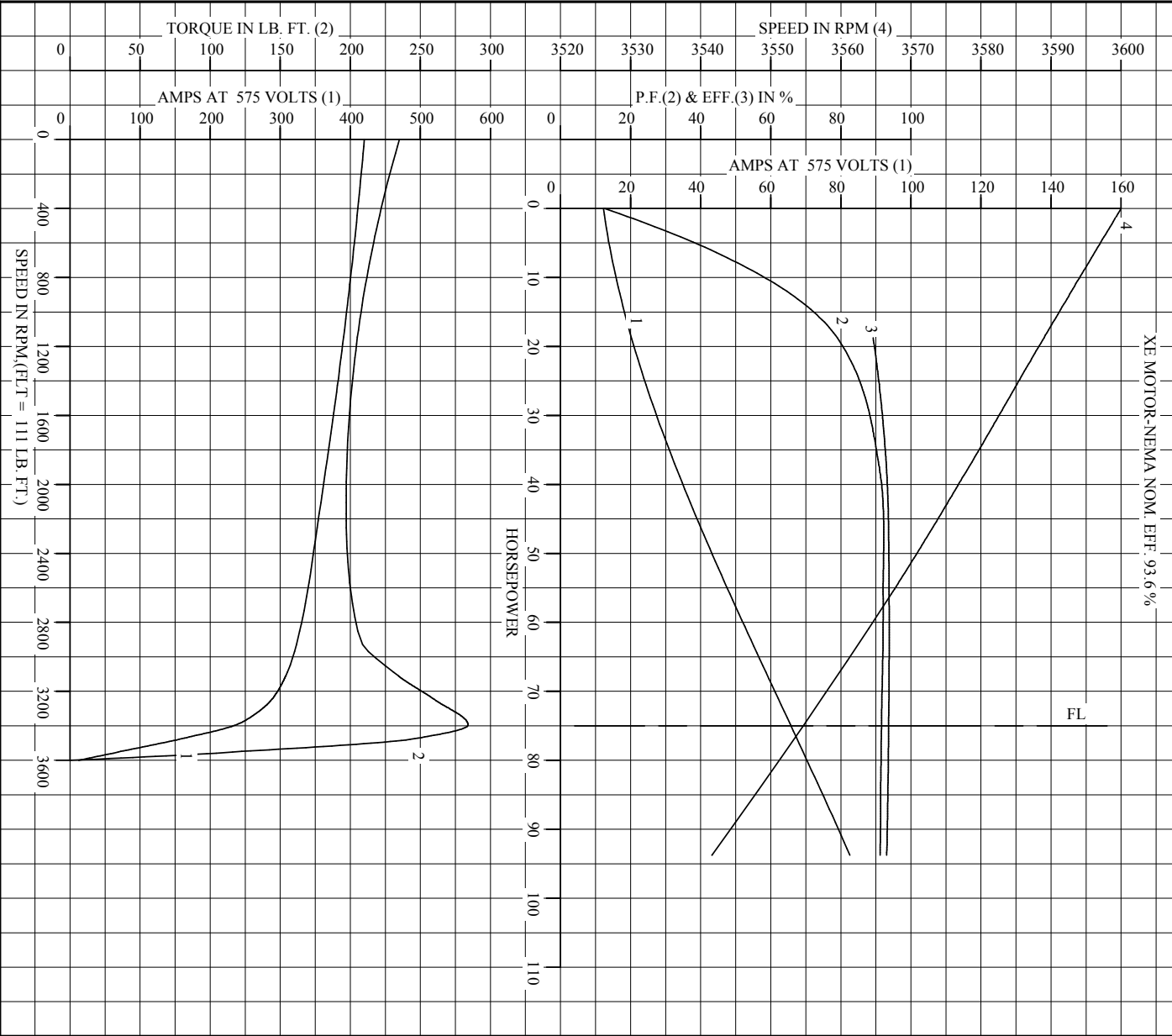
REMARKS: TYPICAL DATA  
XE MOTOR-NEMA NOM. EFF. 93.6 %



DR. BY W. I. SMITH  
CK. BY C. E. JAMISON  
APP. BY W. I. SMITH  
DATE 10/05/17

**A-C MOTOR PERFORMANCE DATA**  
A36WG1546-R013  
ISSUE DATE 01/22/21

REL. S. O.		RPM	<b>3555</b>	S. F.	<b>1.15</b>	ROTOR	<b>4181410051E</b>
FRAME	<b>365TSD</b>	VOLTS	<b>575</b>	NEMA DESIGN	<b>B</b>	TEST S. O.	<b>TYPICAL DATA</b>
HP	<b>75</b>	AMPS	<b>65.5</b>	CODE LETTER	<b>F</b>	TEST DATE	<b>---</b>
TYPE	<b>P</b>	DUTY	<b>CONT</b>	ENCLOSURE	<b>TEFC</b>	STATOR RES. @ 25 °C	<b>.116</b>
PHASR./HERTZ	<b>3/60</b>	AMB °C/INSUL	<b>40/F</b>	E/S	<b>-</b>	OHMS (BETWEEN LINES)	



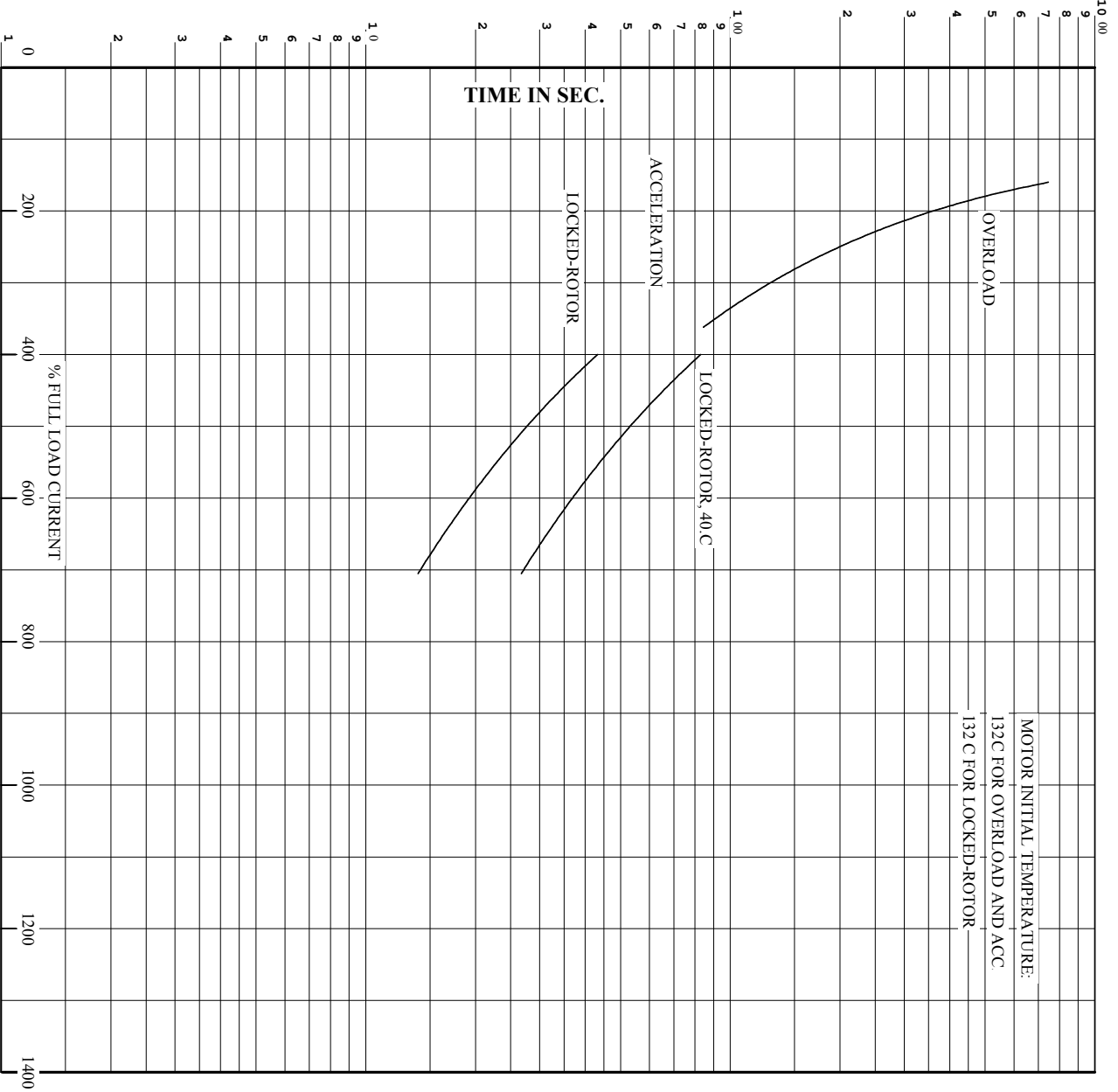
AMPERES SHOWN FOR 575 VOLT CONNECTION. IF OTHER VOLTAGE CONNECTIONS ARE AVAILABLE, THE AMPERES WILL VARY INVERSELY WITH THE RATED VOLTAGE.



DR. BY W. L. SMITH  
 CK. BY C. E. JAMISON  
 App. BY W. L. SMITH  
 DATE 10/05/17

**A-C MOTOR PERFORMANCE CURVES**  
**A36WG1546-R013**  
 ISSUE DATE **01/22/21**

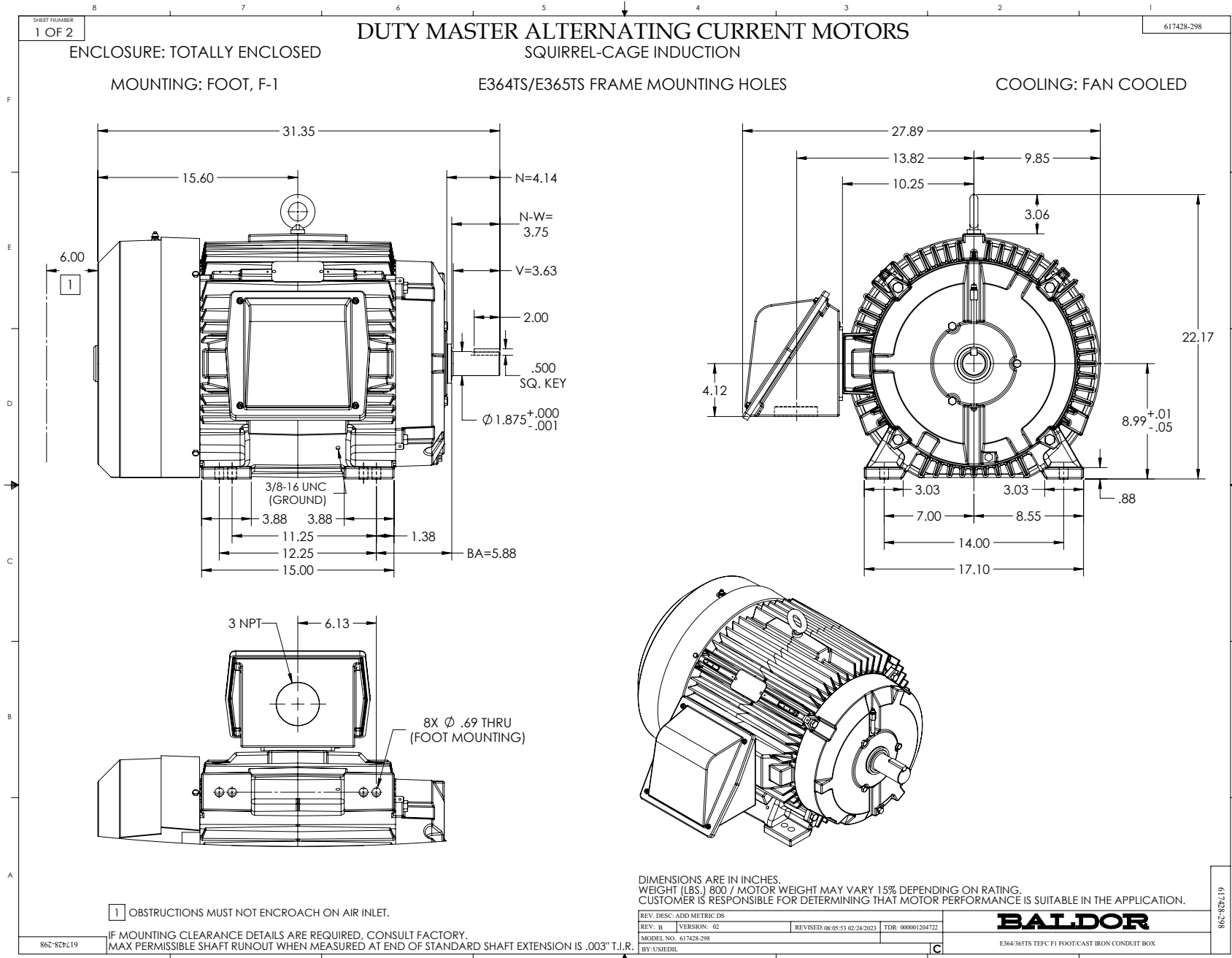
REL. S.O. \_\_\_\_\_ RPM **3555** S.F. **1.15** ROTOR **418141005TE**  
 FRAME **365TSD** VOLTS **575** NEMA DESIGN **B** TEST S.O. **TYPICAL DATA**  
 HP **75** AMPS **65.5** CODE LETTER **F** TEST DATE **---**  
 TYPE **P** DUTY **CONT** ENCLOSURE **TEFC** STATOR RES @ 25 °C. **116**  
 PHASE/HERTZ **3/60** AMB °C/INSUL **40/F** E/S **-** OMS (BETWEEN LINES)

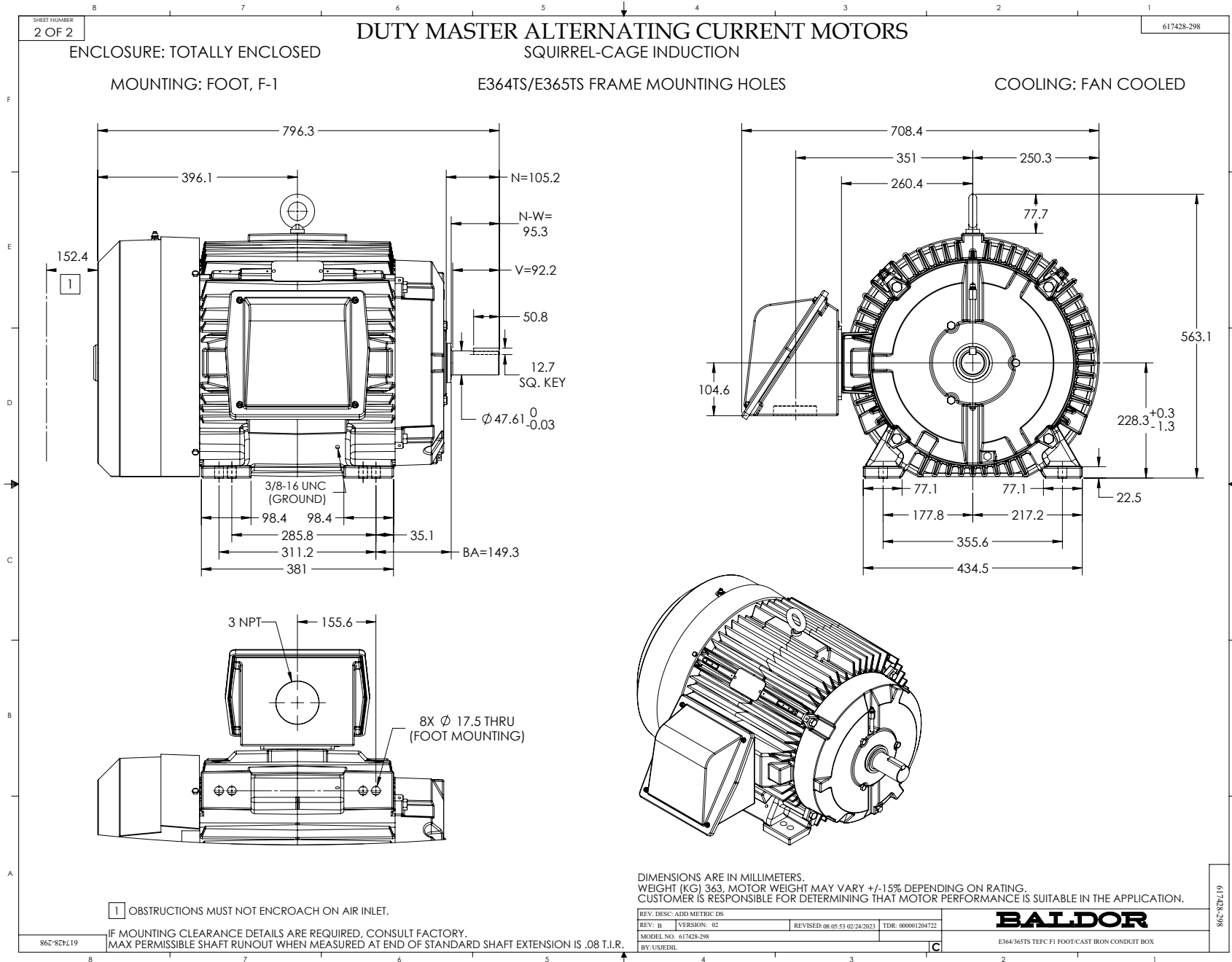


REMARKS: THERMAL LIMIT CURVE  
 XE MOTOR-NEMA NOM. EFF. 93.6 %

AMPERES SHOWN FOR 575 VOLT CONNECTION, IF OTHER VOLTAGE CONNECTIONS ARE AVAILABLE, THE AMPERES WILL VARY INVERSELY WITH THE RATED VOLTAGE.

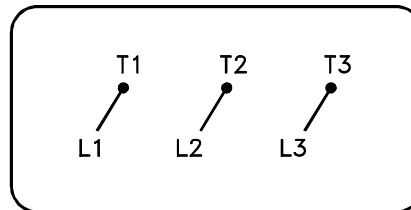
<b>BALDOR</b> A MEMBER OF THE ABB GROUP	DR. BY <u>W. L. SMITH</u>	<b>A-C MOTOR</b> PERFORMANCE CURVES	A36WG1546-R013 ISSUE DATE 01/22/21
	CK. BY <u>C. E. JAMISON</u>		
	APP. BY <u>W. L. SMITH</u> DATE <u>10/05/17</u>		





416820-036

A-C MOTOR  
CONNECTION DIAGRAM  
STANDARD 3 LEAD CONNECTED



(N.P. 1575-BA)

416820-036

REV. DESC: LOADED TO BUS, C/R 335225		
REV. LTR: -	VERSION: 00	TDR: 000000538207
FILE: \MGA\00000\682	REVISED: 11:54:06 04/30/2010	
MTL: -	BY: RAGRA	

**BALDOR**

CONN DIAG - STANDARD 3 LEAD  
SH 1 of 1