



---

# Customer information packet

## ECP4310T-4

60HP, 3560RPM, 3PH, 60HZ, 364TS, A36056M, TEFC

Class - CLI GP A,B,C,D

Division - Division II

## Specifications

Enclosure	TEFC
Frame	364TS
Frame Material	Iron
Frequency	60.00 Hz
Haz Area Class and Group	CLI GP A,B,C,D
Haz Area Division	Division II
Motor Letter Type	Three Phase
Output @ Frequency	60.000 HP @ 60 HZ
Phase	3
Synchronous Speed @ Frequency	3600 RPM @ 60 HZ
Voltage @ Frequency	460.0 V @ 60 HZ
Agency Approvals	CCSAUSEEV NEMA PREMIUM NEMA_PREMIUM UR
Ambient Temperature	40 °C
Auxillary Box	No Auxillary Box
Base Indicator	Rigid
Bearing Grease Type	Polyrex EM (-20F +300F)
Constant Torque Speed Range	6-60
Current @ Voltage	65.100 A @ 460.0 V
Design Code	B
Drip Cover	No Drip Cover
Duty Rating	CONT
Efficiency @ 100% Load	95.0 %
Enclosure Modification	841
Feedback Device	NO FEEDBACK
Haz Area Temp Code	T3
Heater Indicator	No Heater
High Voltage Full Load Amps	65.1 a
Insulation Class	F
Inverter Code	Inverter Ready

## Part detail

Revision	AC
Type	AC
Mech. spec.	
Base	
Status	PRD/A
Elec. spec.	A36WG0130
Layout	617428-036
Eff. date	08-26-2024
CD Diagram	416820-036
Poles	02
Leads	3#4
Proprietary	False
Created date	10-19-2010

<b>KVA Code</b>	F
<b>Lifting Lugs</b>	No Lifting Lugs
<b>Max Speed</b>	4500 rpm
<b>Motor Lead Quantity/Wire Size</b>	3 @ 4 AWG
<b>Motor Standards</b>	NEMA
<b>Motor Type</b>	A36056M
<b>Mounting Arrangement</b>	F1
<b>Number of Poles</b>	2
<b>Overall Length</b>	31.37 IN
<b>Power Factor</b>	90
<b>Pulley End Bearing Type</b>	Ball
<b>Pulley Face Code</b>	Standard
<b>Service Factor</b>	1.15
<b>Shaft Diameter</b>	1.875 IN
<b>Shaft Ground Indicator</b>	No Shaft Grounding
<b>Shaft Rotation</b>	Reversible
<b>Shaft Slinger Indicator</b>	No Slinger
<b>Speed</b>	3560 rpm
<b>Speed Code</b>	Single Speed
<b>Starting Method</b>	Direct on line
<b>Thermal Device - Bearing</b>	None
<b>Thermal Device - Winding</b>	None

**Nameplate**

**NP4033LUA**

<b>CAT #</b>	ECP4310T-4			<b>SER</b>				<b>CC</b>	010A			
<b>SPEC</b>	P36G397			<b>RATING</b>	40C AMB-CONT							
<b>HZ</b>	<b>VOLTS</b>		<b>AMPS</b>	<b>RPM</b>	<b>HP</b>	<b>CODE</b>	-	<b>SF</b>	<b>DES</b>	<b>PF</b>	<b>NEMA</b>	<b>NOM. EFF</b>
60	460		65.1	3560	60	F		1.15	B	90 %	95 %	%
										%		%
<b>PH</b>	3	<b>CL</b>	F	<b>MAX RPM</b>	4500	<b>MAX CORR KVAR</b>	5					
<b>BRG</b>	<b>DE</b>	6313	<b>ODE</b>	6313	<b>ENCL</b>	TEFC	<b>FR</b>	364TS	<b>IP</b>	55		
<b>GREASE</b>	POLYREX EM			<b>MTR WT</b>	883	<b>LBS</b>						
	<b>CL I DIV 2 GRPS A,B,C,D</b>				<b>CL I ZONE 2 GRPS</b>			<b>IIA,IIB,IIC</b>		<b>TEMP T</b>	200	<b>C</b>
<b>INV READY</b>	<b>CT</b>	0.7-60	<b>HZ</b>	1000:1	<b>VT</b>	0-60	<b>HZ</b>	1000:1	<b>CHP</b>	60-75	<b>HZ</b>	1.25:1
<b>INV TEMP CL</b>	200	<b>C</b>	<b>USABLE AT</b>	50HZ 50HP 380V 66A						<b>SF1.0</b>		

**Accessories**

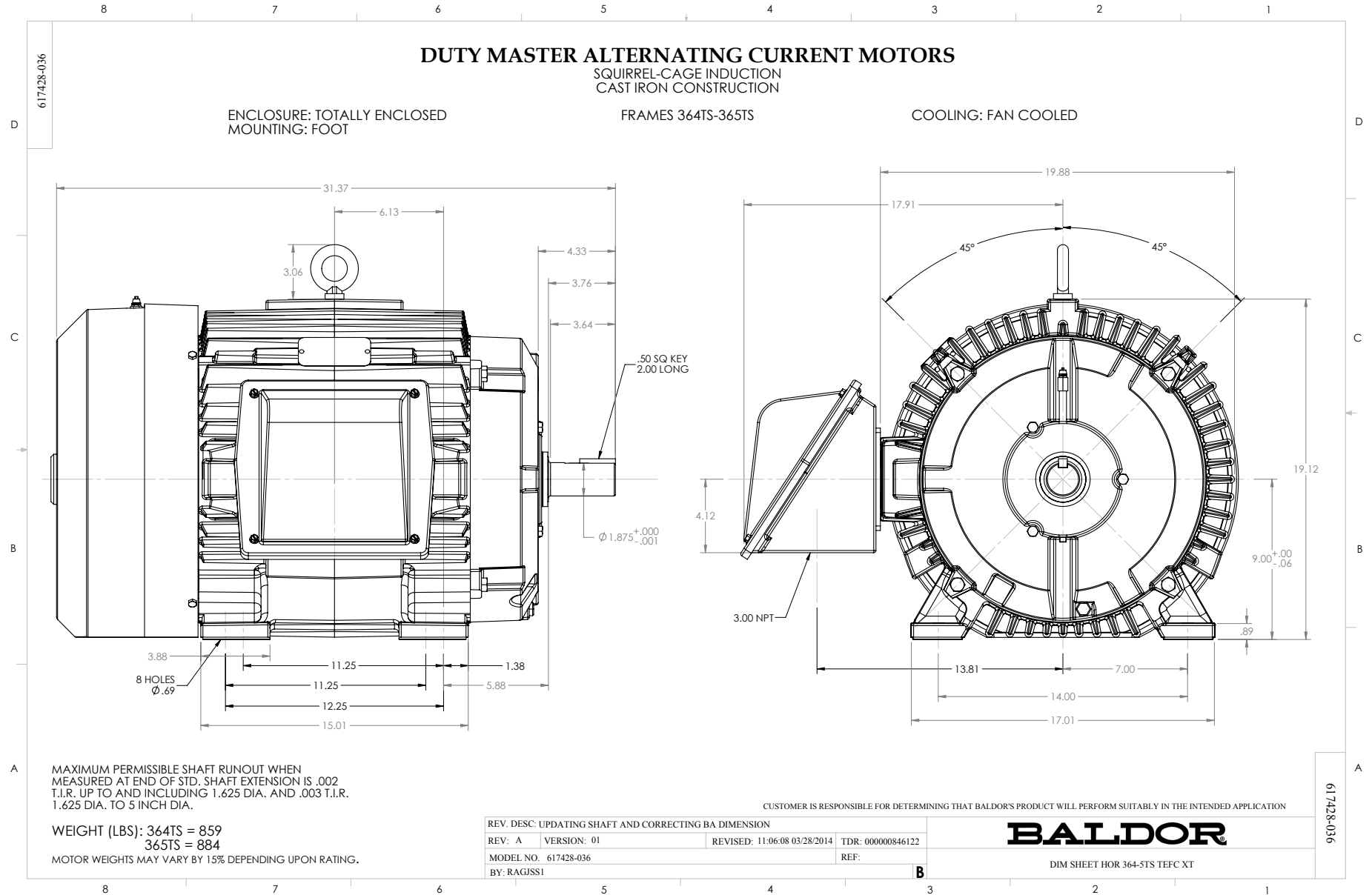
<b>Part number</b>	<b>Description</b>	<b>Multiplier</b>
K36G2	C-FACE KIT	A8





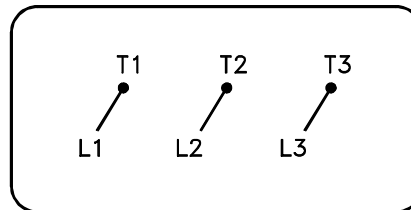






416820-036

A-C MOTOR  
CONNECTION DIAGRAM  
STANDARD 3 LEAD CONNECTED



(N.P. 1575-BA)

REV. DESC: LOADED TO BUS, C/R 335225		
REV. LTR: -	VERSION: 00	TDR: 000000538207
FILE: \MGA\00000\682	REVISED: 11:54:06 04/30/2010	
MTL: -	BY: RAGRA	

**BALDOR**

CONN DIAG - STANDARD 3 LEAD  
SH 1 of 1

416820-036