



Customer information packet

ECP3664T-4

2HP, 1165RPM, 3PH, 60HZ, 184T, 0642M, TEFC, F1

Class - CLI GP A,B,C,D

Division - Division II

Specifications

Enclosure	TEFC
Frame	184T
Frame Material	Iron
Frequency	60.00 Hz
Motor Letter Type	Three Phase
Output @ Frequency	2.000 HP @ 60 HZ
Phase	3
Synchronous Speed @ Frequency	1200 RPM @ 60 HZ
Voltage @ Frequency	460.0 V @ 60 HZ
XP Class and Group	CLI GP A,B,C,D
XP Division	Division II
Agency Approvals	CSA EEV NEMA PREMIUM NEMA_PREMIUM UR CCSA US
Ambient Temperature	40 °C
Auxillary Box	No Auxillary Box
Auxillary Box Lead Termination	None
Base Indicator	Rigid
Bearing Grease Type	Polyrex EM (-20F +300F)
Blower	None
Constant Torque Speed Range	1.8
Current @ Voltage	3.200 A @ 460.0 V
Design Code	B
Drip Cover	No Drip Cover
Duty Rating	CONT
Efficiency @ 100% Load	88.5 %
Electrically Isolated Bearing	Not Electrically Isolated
Enclosure Modification	Severe Duty Features
Feedback Device	NO FEEDBACK
Front Face Code	Standard

Part detail

Revision	Y
Type	AC
Mech. spec.	06H483
Base	
Status	PRD/A
Elec. spec.	06WGX234
Layout	06LYH483
Eff. date	08-15-2022
CD Diagram	CD0006
Poles	06
Leads	3#16
Proprietary	False
Created date	12-02-2010

Front Shaft Indicator	None
Heater Indicator	No Heater
High Voltage Full Load Amps	3.2 a
Insulation Class	F
Inverter Code	Inverter Duty
KVA Code	K
Lifting Lugs	Standard Lifting Lugs
Locked Bearing Indicator	No Locked Bearing
Max Speed	1800 rpm
Motor Lead Exit	Ko Box
Motor Lead Quantity/Wire Size	3 @ 16 AWG
Motor Lead Termination	Flying Leads
Motor Standards	NEMA
Motor Type	0642M
Mounting Arrangement	F1
Number of Poles	6
Overall Length	15.93 IN
Power Factor	68
Product Family	Chemical Processing (Not DC)
Pulley End Bearing Type	Ball
Pulley Face Code	Standard
Pulley Shaft Indicator	Standard
Rodent Screen	None
Service Factor	1.15
Shaft Diameter	1.125 IN
Shaft Extension Location	Pulley End
Shaft Ground Indicator	No Shaft Grounding
Shaft Rotation	Reversible
Shaft Slinger Indicator	Shaft Slinger
Speed	1165 rpm
Speed Code	Single Speed
Starting Method	Direct on line
Thermal Device - Bearing	None
Thermal Device - Winding	None

Vibration Sensor Indicator	No Vibration Sensor
Winding Thermal 1	None
Winding Thermal 2	None
XP Temp Code	T3C

Nameplate

NP3257									
CAT.NO.	ECP3664T-4								
SPEC.	06H483X234G1								
HP	2 TE								
VOLTS	460								
AMP	3.2								
RPM	1165								
FRAME	184T		HZ	60		PH	3		
SER.F.	1.15	CODE	K	DES	B	CL	F		
RATING	40C AMB-CONT								
SN									
DE	6206	ODE	6206						
NEMA-NOM-EFF	88.5	PF	68						
G.MIN.EFF	88.5	CC	010A						
T. CODE	T3C	T=	160						

NP3260			
SPEC.	06H483X234G1		
D.E. BRG.	30BC02XP30X		
O.D.E. BRG.	30BC02XP30X		
GREASE	POLYREX EM		
RPM MAX	1800	MAX. KVAR	1
BLANK			
INV.TYPE	PWM		
T=	160		
C HP FR	60	C HP TO	90
CT HZ FROM	1.8	CT HZ TO	60
VT HZ FROM	-0	VT HZ TO	60
HTR-VOLTS		HTR-AMPS	
HTR-WATTS		MAX. SPACE HEATER TEMP.	

AC Induction Motor Performance Data

Record # 92342

Typical performance - not guaranteed values

Winding: 06WGX234-R018		Type: 0642M	Enclosure: TEFC	
Nameplate Data			460 V, 60 Hz: Single Voltage Motor	
Rated Output (HP)	2	Full Load Torque	9.057 LB-FT	
Volts	460	Start Configuration	direct on line	
Full Load Amps	3.15	Breakdown Torque	31.2 LB-FT	
R.P.M.	1165	Pull-up Torque	16.7 LB-FT	
Hz	60 Phase	Locked-rotor Torque	19.9 LB-FT	
NEMA Design Code	B KVA Code	Starting Current	25 A	
Service Factor (S.F.)	1.15	No-load Current	1.84 A	
NEMA Nom. Eff.	88.5 Power Factor	Line-line Res. @ 25°C	5.4163 Ω	
Rating - Duty	40C AMB-CONT	Temp. Rise @ Rated Load	26°C	
S.F. Amps		Temp. Rise @ S.F. Load	31°C	
		Locked-rotor Power Factor	28.5	
		Rotor inertia	0.395 lb-ft ²	

Load Characteristics 460 V, 60 Hz, 2 HP

% of Rated Load	25	50	75	100	125	150	S.F.
Power Factor	31	48	60	68	73	75	71
Efficiency	80.6	87.1	88.6	88.5	88	86.7	88.3
Speed	1193.2	1186.2	1178.6	1170.4	1161.3	1150.7	1165
Line amperes	1.97	2.26	2.67	3.14	3.68	4.33	3.46

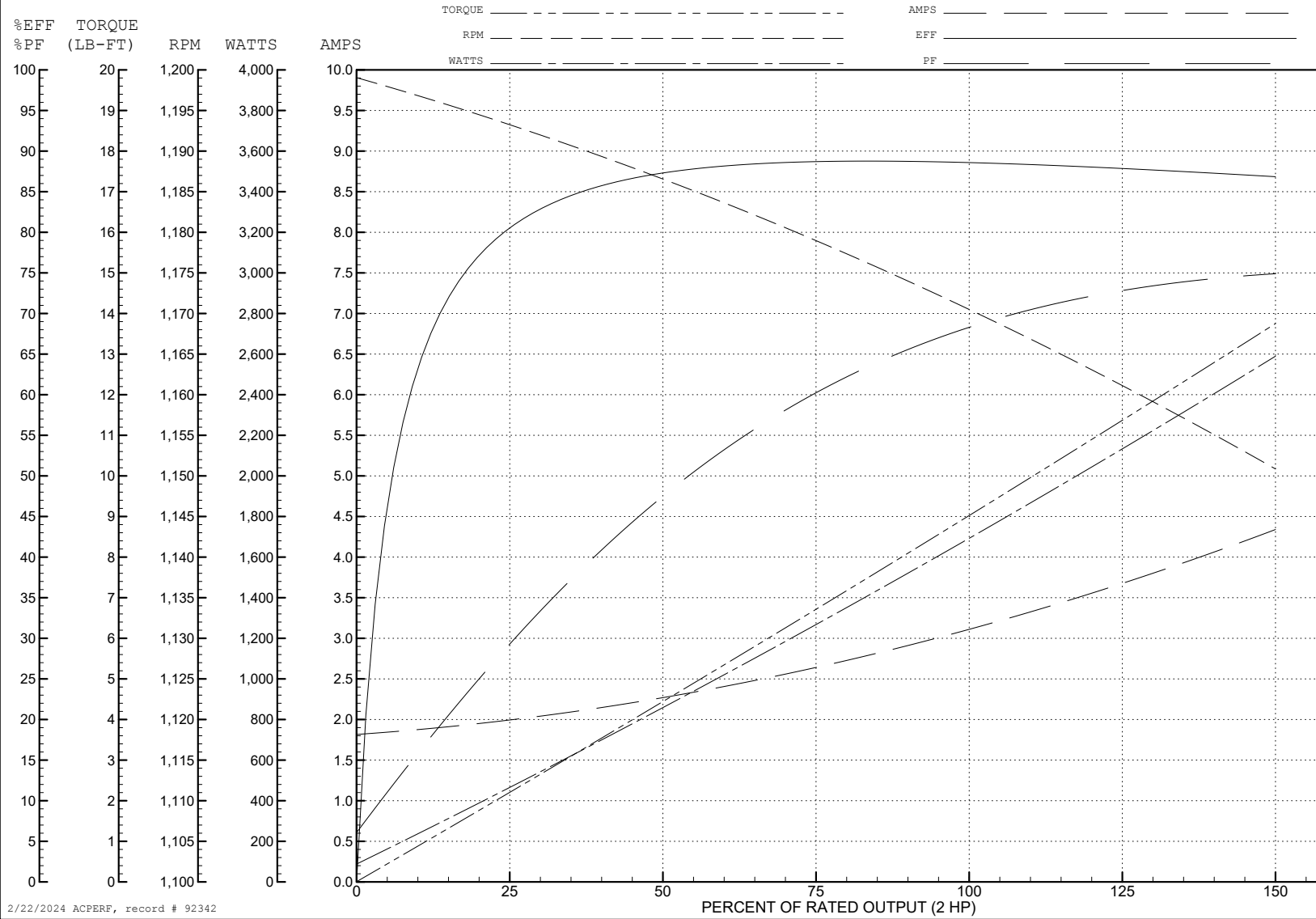
ABB Motors and Mechanical Inc.

WINDING # 06WGX234

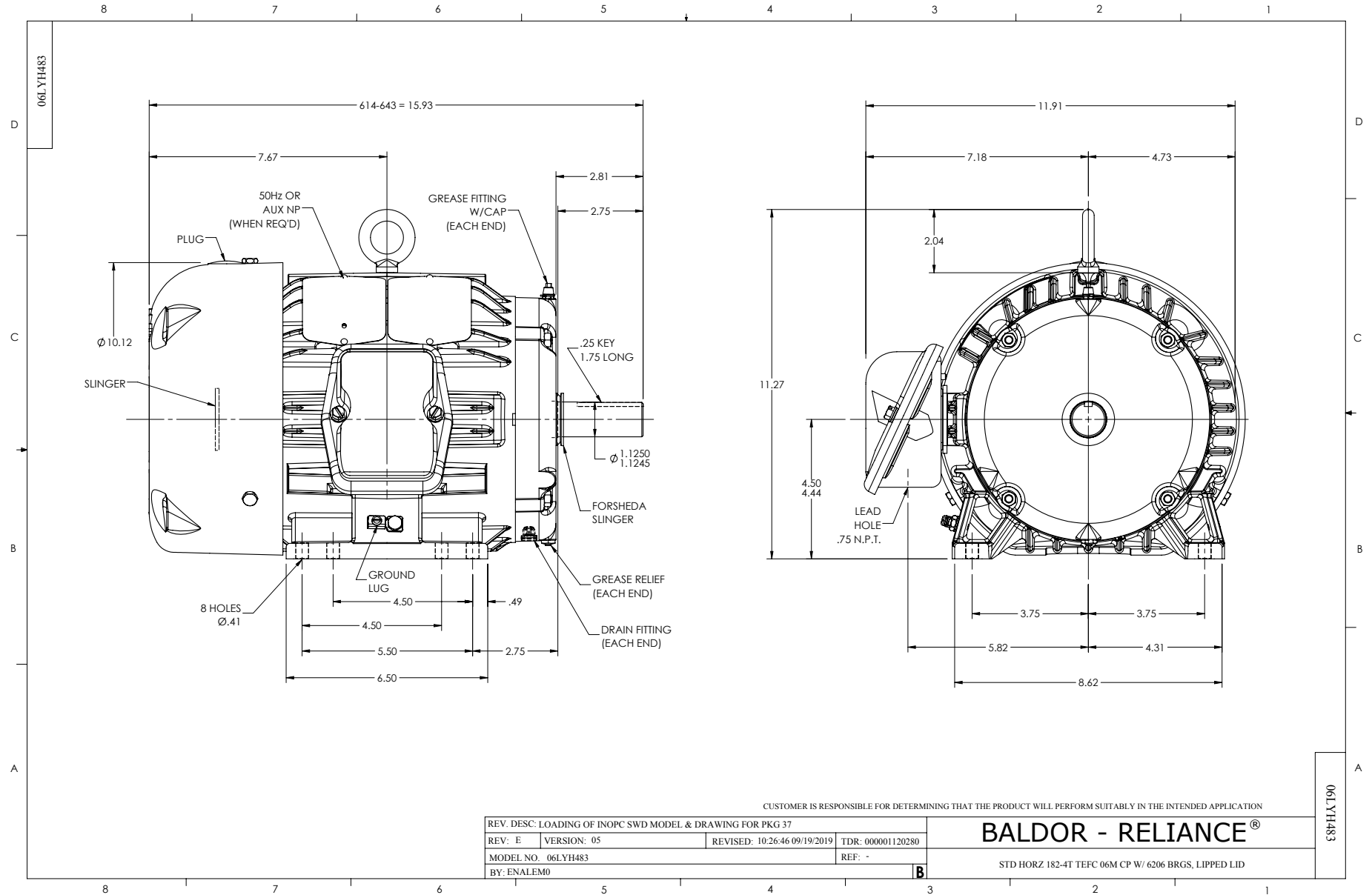
Typical performance - not guaranteed values.

2 HP 3 PH 60 HZ 1165 RPM 460 V 0642M

TORQUES (LB-FT): PO=31.2 PU=16.7 LR=19.9 LRA=25



2/22/2024 ACPERF, record # 92342



CD0006



NOTES:

1. THREE LEAD MOTOR MAY BE EITHER WYE CONNECTED OR DELTA CONNECTED.
2. INTERCHANGE ANY TWO LINE LEADS TO REVERSE ROTATION.
3. OPTIONAL THERMOSTATS ARE PROVIDED WHEN SPECIFIED.
4. ACTUAL NUMBER OF INTERNAL PARALLEL CIRCUITS MAY VARY.
5. LEAD COLORS ARE OPTIONAL. LEADS MUST BE NUMBERED AS SHOWN.

CD0006

REV. DESC: ADD CLASS CONN00000007		
REV. LTR: E	VERSION: 01	TDR: 000001099922
FILE: \AAA\00005\141	REVISED: 10:24:49 02/19/2019	BY: ENBRIRO
MTL: -	© □	

BALDOR - RELIANCE®

3PH, SV, 3 LEADS, WYE OR DELTA CONNECTED

SH 1 of 1