



---

# Customer information packet

## ECP3660T

3HP, 3500RPM, 3PH, 60HZ, 182T, 0628M, TEFC, F1

Class - CLI GP A,B,C,D

Division - Division II

## Specifications

Enclosure	TEFC
Frame	182T
Frame Material	Iron
Frequency	60.00 Hz
Haz Area Class and Group	CL I GP A,B,C,D
Haz Area Division	Division II
Motor Letter Type	Three Phase
Output @ Frequency	3.000 HP @ 60 HZ
Phase	3
Synchronous Speed @ Frequency	3600 RPM @ 60 HZ
Voltage @ Frequency	460.0 V @ 60 HZ 230.0 V @ 60 HZ
Agency Approvals	CCSA US CSA EEV NEMA PREMIUM NEMA_PREMIUM UR
Ambient Temperature	40 °C
Auxillary Box	No Auxillary Box
Auxillary Box Lead Termination	None
Base Indicator	Rigid
Bearing Grease Type	Polyrex EM (-20F +300F)
Blower	None
Constant Torque Speed Range	6
Current @ Voltage	7.500 A @ 208.0 V 6.800 A @ 230.0 V 3.400 A @ 460.0 V
Design Code	B
Drip Cover	No Drip Cover
Duty Rating	CONT
Efficiency @ 100% Load	88.5 %
Electrically Isolated Bearing	Not Electrically Isolated

## Part detail

Revision	AA
Type	AC
Mech. spec.	06H483
Base	
Status	PRD/A
Elec. spec.	06WGW036
Layout	06LYH483
Eff. date	04-12-2024
CD Diagram	CD0005
Poles	02
Leads	9#16
Proprietary	False
Created date	05-13-2010

Enclosure Modification	Severe Duty Features
Feedback Device	NO FEEDBACK
Front Face Code	Standard
Front Shaft Indicator	None
Haz Area Temp Code	T3C
Heater Indicator	No Heater
High Voltage Full Load Amps	3.4 a
Insulation Class	F
Inverter Code	Inverter Duty
KVA Code	L
Lifting Lugs	Standard Lifting Lugs
Locked Bearing Indicator	No Locked Bearing
Max Speed	5400 rpm
Motor Lead Exit	Ko Box
Motor Lead Quantity/Wire Size	9 @ 16 AWG
Motor Lead Termination	Flying Leads
Motor Standards	NEMA
Motor Type	0628M
Mounting Arrangement	F1
Number of Poles	2
Overall Length	15.93 IN
Power Factor	92
Product Family	Chemical Processing (Not DC)
Pulley End Bearing Type	Ball
Pulley Face Code	Standard
Pulley Shaft Indicator	Standard
Rodent Screen	None
Service Factor	1.15
Shaft Diameter	1.125 IN
Shaft Extension Location	Pulley End
Shaft Ground Indicator	No Shaft Grounding
Shaft Rotation	Reversible
Shaft Slinger Indicator	Shaft Slinger
Speed	3500 rpm

<b>Speed Code</b>	Single Speed
<b>Starting Method</b>	Direct on line
<b>Thermal Device - Bearing</b>	None
<b>Thermal Device - Winding</b>	None
<b>Vibration Sensor Indicator</b>	No Vibration Sensor
<b>Winding Thermal 1</b>	None
<b>Winding Thermal 2</b>	None

**Nameplate**

<b>NP3257</b>									
<b>CAT.NO.</b>	ECP3660T								
<b>SPEC.</b>	06H483W036G1								
<b>HP</b>	3 TE								
<b>VOLTS</b>	230/460								
<b>AMP</b>	6.8/3.4								
<b>RPM</b>	3500								
<b>FRAME</b>	182T	<b>HZ</b>	60	<b>PH</b>	3				
<b>SER.F.</b>	1.15	<b>CODE</b>	L	<b>DES</b>	B	<b>CL</b>	F		
<b>RATING</b>	40C AMB-CONT								
<b>SN</b>									
<b>DE</b>	6206	<b>ODE</b>	6206						
<b>NEMA-NOM-EFF</b>	88.5	<b>PF</b>	92						
<b>G.MIN.EFF</b>	86.5	<b>CC</b>	010A						
<b>T. CODE</b>	T3C	<b>T=</b>	160						

<b>NP3260</b>			
<b>SPEC.</b>	06H483W036G1		
<b>D.E. BRG.</b>	30BC02XP30X		
<b>O.D.E. BRG.</b>	30BC02XP30X		
<b>GREASE</b>	POLYREX EM		
<b>RPM MAX</b>	5400	<b>MAX. KVAR</b>	N/A
<b>BLANK</b>			
<b>INV.TYPE</b>	PWM		
<b>T=</b>	160		
<b>C HP FR</b>	60	<b>C HP TO</b>	90
<b>CT HZ FROM</b>	6	<b>CT HZ TO</b>	60
<b>VT HZ FROM</b>	3	<b>VT HZ TO</b>	60
<b>HTR-VOLTS</b>		<b>HTR-AMPS</b>	
<b>HTR-WATTS</b>		<b>MAX. SPACE HEATER TEMP.</b>	

**AC Induction Motor Performance Data**

Record # 47052

Typical performance - not guaranteed values

<b>Winding:</b> 06WGW036-R021		<b>Type:</b> 0628M		<b>Enclosure:</b> TEFC	
<b>Nameplate Data</b>			<b>460 V, 60 Hz: High Voltage Connection</b>		
<b>Rated Output (HP)</b>	3	<b>Full Load Torque</b>	4.5 LB-FT		
<b>Volts</b>	230/460	<b>Start Configuration</b>	direct on line		
<b>Full Load Amps</b>	6.8/3.4	<b>Breakdown Torque</b>	23.3 LB-FT		
<b>R.P.M.</b>	3500	<b>Pull-up Torque</b>	15.2 LB-FT		
<b>Hz</b>	60 <b>Phase</b>	3	<b>Locked-rotor Torque</b>	16 LB-FT	
<b>NEMA Design Code</b>	<b>B KVA Code</b>	L	<b>Starting Current</b>	32 A	
<b>Service Factor (S.F.)</b>		1.15	<b>No-load Current</b>	1.06 A	
<b>NEMA Nom. Eff.</b>	88.5 <b>Power Factor</b>	92	<b>Line-line Res. @ 25°C</b>	4.1 Ω	
<b>Rating - Duty</b>	40C AMB-CONT		<b>Temp. Rise @ Rated Load</b>	32°C	
<b>S.F. Amps</b>			<b>Temp. Rise @ S.F. Load</b>	39°C	
			<b>Locked-rotor Power Factor</b>	44.2	
			<b>Rotor inertia</b>	0.126 LB-FT <sup>2</sup>	

**Load Characteristics 460 V, 60 Hz, 3 HP**

<b>% of Rated Load</b>	<b>25</b>	<b>50</b>	<b>75</b>	<b>100</b>	<b>125</b>	<b>150</b>	<b>S.F.</b>
<b>Power Factor</b>	64	83	90	93	95	99	93
<b>Efficiency</b>	81.2	87.5	89.2	89.3	88.9	88.2	89.1
<b>Speed</b>	3577	3556	3534	3509	3487	3467	3500
<b>Line amperes</b>	1.39	1.96	2.66	3.4	4.12	4.79	3.83

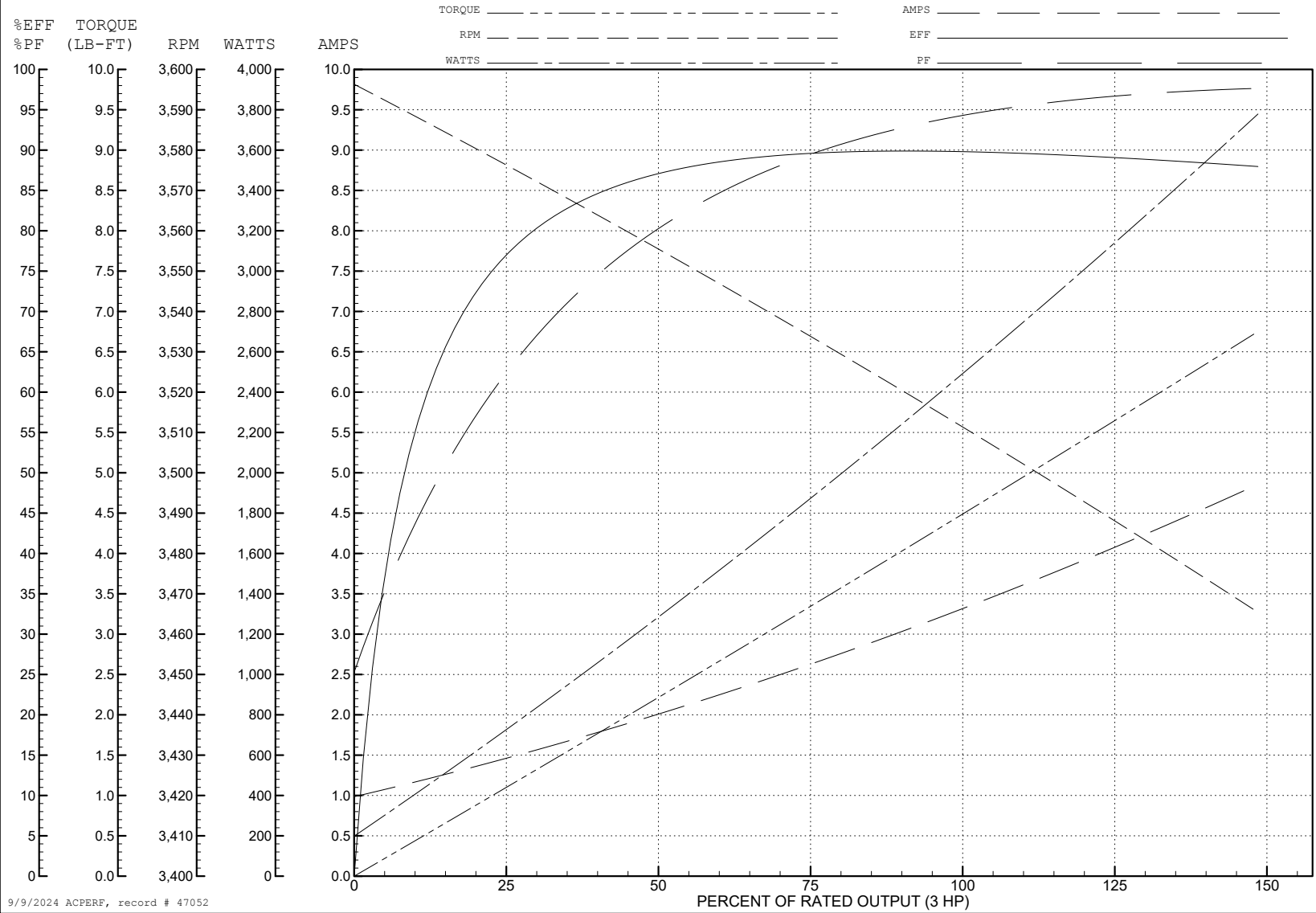
ABB Motors and Mechanical Inc.

WINDING # 06WGW036

3 HP 3 PH 60 HZ 3500 RPM 460 V 0628M

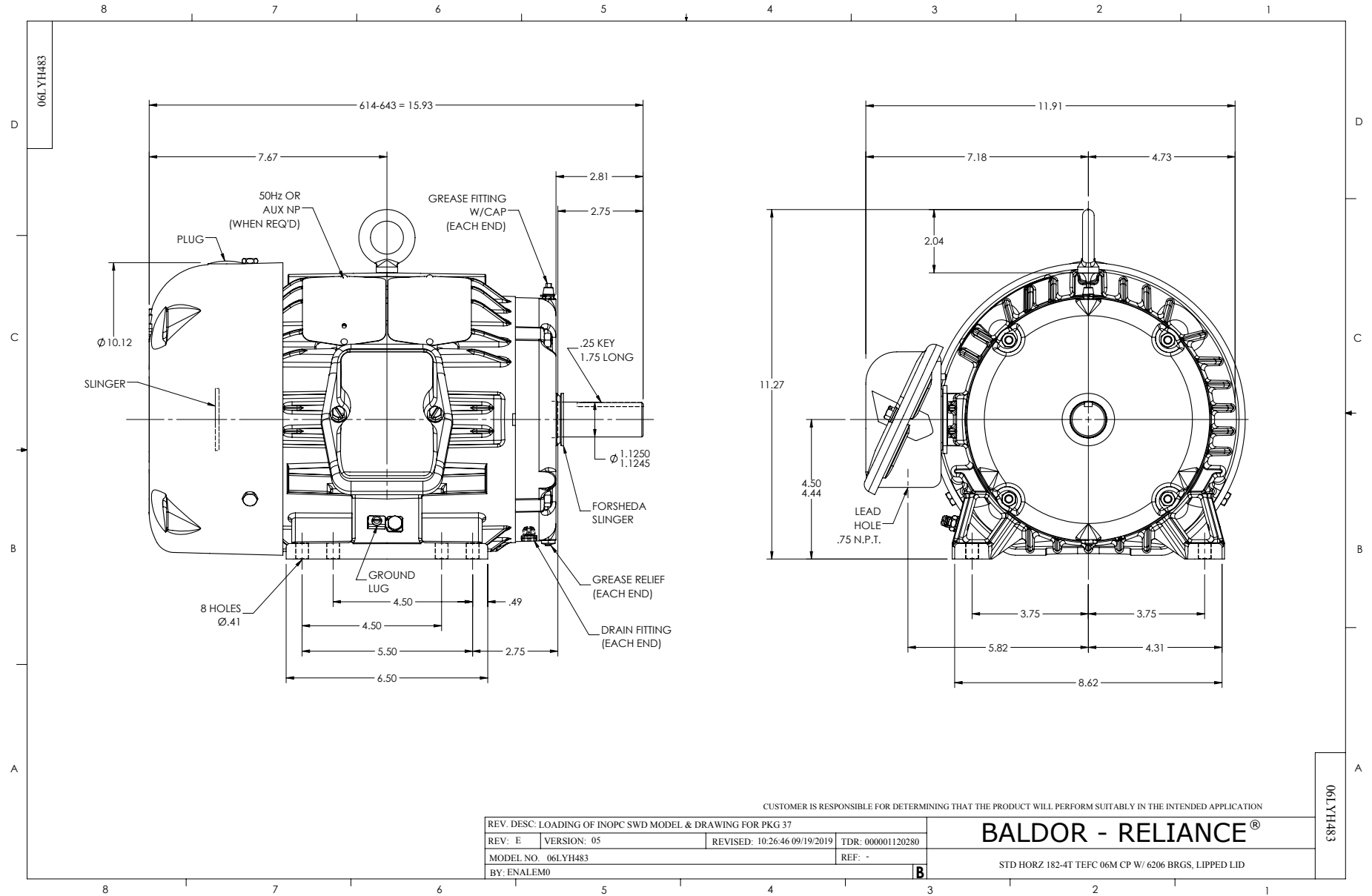
Typical performance - not guaranteed values.

TORQUES (LB-FT): PO=23.3 PU=15.2 LR=16 LRA=32



9/9/2024 ACPERF, record # 47052





CUSTOMER IS RESPONSIBLE FOR DETERMINING THAT THE PRODUCT WILL PERFORM SUITABLY IN THE INTENDED APPLICATION

REV. DESC: LOADING OF INOPC SWD MODEL & DRAWING FOR PKG 37			
REV: E	VERSION: 05	REVISED: 10.26.46 09/19/2019	TDR: 000001120280
MODEL NO. 06LYH483		REF: -	
BY: ENALEM0			

**BALDOR - RELIANCE**®

STD HORZ 182-4T TEFC 06M CP W/ 6206 BRGS, LIPPED LID

CD0005



LOW VOLTAGE  
(2Y)



LINE

HIGH VOLTAGE  
(1Y)



LINE

NOTES:

1. INTERCHANGE ANY TWO LINE LEADS TO REVERSE ROTATION.
2. OPTIONAL THERMOSTATS ARE PROVIDED WHEN SPECIFIED.
3. ACTUAL NUMBER OF INTERNAL PARALLEL CIRCUITS MAY BE A MULTIPLE OF THOSE SHOWN ABOVE.
4. LEAD COLORS ARE OPTIONAL. LEADS MUST ALWAYS BE NUMBERED AS SHOWN.

CD0005

REV. DESC: REVISE TO SHOW OPTIONAL COLORS			
REV. LTR: E	BY: JLP	REVISED: 01/19/99 10:15	TDR: 0171435
S00000		FILE: AAA00005140	MDL: -
		MTL: -	

**BALDOR ELECTRIC Co.**

3PH, DV, 9 LEADS