

# ABB BALDOR RELIANCE III

---

## Customer information packet

### ECP3586T

2HP, 3450RPM, 3PH, 60HZ, 145T, 0532M, TEFC, F1

Class - CLI GP A,B,C,D

Division - Division II

**Specifications**

|                                       |   |
|---------------------------------------|---|
| <b>Enclosure</b>                      | TEFC  |
| <b>Frame</b>                          | 145T  |
| <b>Frame Material</b>                 | Iron  |
| <b>Frequency</b>                      | 60.00 Hz  |
| <b>Haz Area Class and Group</b>       | CLI GP A,B,C,D  |
| <b>Haz Area Division</b>              | Division II   |
| <b>Motor Letter Type</b>              | Three Phase   |
| <b>Output @ Frequency</b>             | 2.000 HP @ 60 HZ  |
| <b>Phase</b>                          | 3   |
| <b>Synchronous Speed @ Frequency</b>  | 3600 RPM @ 60 HZ  |
| <b>Voltage @ Frequency</b>            | 208.0 V @ 60 HZ<br>230.0 V @ 60 HZ<br>460.0 V @ 60 HZ       |
| <b>Agency Approvals</b>               | CCSA US<br>CSA EEV<br>NEMA PREMIUM<br>NEMA_PREMIUM<br>UR    |
| <b>Ambient Temperature</b>            | 40 °C   |
| <b>Auxiliary Box</b>                  | NO AUXILLARY BOX  |
| <b>Auxiliary Box Lead Termination</b> | None  |
| <b>Base Indicator</b>                 | Rigid   |
| <b>Bearing Grease Type</b>            | Polyrex EM (-20F +300F)                                     |
| <b>Blower</b>                         | None  |
| <b>Constant Torque Speed Range</b>    | 6   |
| <b>Current @ Voltage</b>              | 5.000 A @ 230.0 V<br>5.400 A @ 208.0 V<br>2.500 A @ 460.0 V |
| <b>Design Code</b>                    | B   |
| <b>Drip Cover</b>                     | No Drip Cover   |
| <b>Duty Rating</b>                    | CONT  |
| <b>Efficiency @ 100% Load</b>         | 86.5 %  |

**Part Detail**

|                     |            |
|---------------------|------------|
| <b>Revision</b>     | Z          |
| <b>Type</b>         | AC         |
| <b>Mech. spec.</b>  | 05F008     |
| <b>Base</b>         |            |
| <b>Status</b>       | PRD/A      |
| <b>Elec. spec.</b>  | 05WGW115   |
| <b>Layout</b>       | 05LYF008   |
| <b>Eff. date</b>    | 07-17-2023 |
| <b>CD Diagram</b>   | CD0005     |
| <b>Poles</b>        | 02         |
| <b>Leads</b>        | 9#18       |
| <b>Proprietary</b>  | False      |
| <b>Created date</b> | 02-24-2009 |

|                                      |                             |
|--------------------------------------|-----------------------------|
| <b>Electrically Isolated Bearing</b> | Not Electrically Isolated   |
| <b>Feedback Device</b>               | NO FEEDBACK                 |
| <b>Front Face Code</b>               | Standard                    |
| <b>Front Shaft Indicator</b>         | None                        |
| <b>Haz Area Temp Code</b>            | T4                          |
| <b>Heater Indicator</b>              | No Heater                   |
| <b>High Voltage Full Load Amps</b>   | 2.5 a                       |
| <b>Insulation Class</b>              | F                           |
| <b>Inverter Code</b>                 | Inverter Ready              |
| <b>KVA Code</b>                      | N                           |
| <b>Lifting Lugs</b>                  | Standard Lifting Lugs       |
| <b>Locked Bearing Indicator</b>      | No Locked Bearing           |
| <b>Max Speed</b>                     | 5400 rpm                    |
| <b>Motor Lead Exit</b>               | Ko Box                      |
| <b>Motor Lead Quantity/Wire Size</b> | 9 @ 18 AWG                  |
| <b>Motor Lead Termination</b>        | Flying Leads                |
| <b>Motor Standards</b>               | NEMA                        |
| <b>Motor Type</b>                    | 0532M                       |
| <b>Mounting Arrangement</b>          | F1                          |
| <b>Number of Poles</b>               | 2                           |
| <b>Overall Length</b>                | 12.88 IN                    |
| <b>Power Factor</b>                  | 85                          |
| <b>Product Family</b>                | Super-E Chemical Processing |
| <b>Pulley End Bearing Type</b>       | Ball                        |
| <b>Pulley Face Code</b>              | Standard                    |
| <b>Pulley Shaft Indicator</b>        | Standard                    |
| <b>Rodent Screen</b>                 | None                        |
| <b>Service Factor</b>                | 1.15                        |
| <b>Shaft Diameter</b>                | 0.875 IN                    |
| <b>Shaft Extension Location</b>      | Pulley End                  |
| <b>Shaft Ground Indicator</b>        | No Shaft Grounding          |
| <b>Shaft Rotation</b>                | Reversible                  |
| <b>Shaft Slinger Indicator</b>       | Shaft Slinger               |
| <b>Speed</b>                         | 3450 rpm                    |

|                                   |                     |
|-----------------------------------|---------------------|
| <b>Speed Code</b>                 | Single Speed        |
| <b>Starting Method</b>            | Direct on line      |
| <b>Thermal Device - Bearing</b>   | None                |
| <b>Thermal Device - Winding</b>   | None                |
| <b>Vibration Sensor Indicator</b> | No Vibration Sensor |
| <b>Winding Thermal 1</b>          | None                |
| <b>Winding Thermal 2</b>          | None                |

**Nameplate**

| <b>NP3258</b>       |              |             |      |            |   |           |   |  |  |
|---------------------|--------------|-------------|------|------------|---|-----------|---|--|--|
| <b>CAT.NO.</b>      | ECP3586T     |             |      |            |   |           |   |  |  |
| <b>SPEC.</b>        | 05F008W115G1 |             |      |            |   |           |   |  |  |
| <b>HP</b>           | 2 TE         |             |      |            |   |           |   |  |  |
| <b>VOLTS</b>        | 208-230/460  |             |      |            |   |           |   |  |  |
| <b>AMP</b>          | 5.4-5/2.5    |             |      |            |   |           |   |  |  |
| <b>RPM</b>          | 3450         |             |      |            |   |           |   |  |  |
| <b>FRAME</b>        | 145T         | <b>HZ</b>   | 60   | <b>PH</b>  | 3 |           |   |  |  |
| <b>SER.F.</b>       | 1.15         | <b>CODE</b> | N    | <b>DES</b> | B | <b>CL</b> | F |  |  |
| <b>RATING</b>       | 40C AMB-CONT |             |      |            |   |           |   |  |  |
| <b>SN</b>           |              |             |      |            |   |           |   |  |  |
| <b>DE</b>           | 6205         | <b>ODE</b>  | 6205 |            |   |           |   |  |  |
| <b>NEMA-NOM-EFF</b> | 86.5         | <b>PF</b>   | 85   |            |   |           |   |  |  |
| <b>G.MIN.EFF</b>    | 84           | <b>CC</b>   | 010A |            |   |           |   |  |  |
| <b>T. CODE</b>      | T4           | <b>T=</b>   | 135  |            |   |           |   |  |  |

**NP3261**

|                    |              |                                |      |
|--------------------|--------------|--------------------------------|------|
| <b>SPEC.</b>       | 05F008W115G1 |                                |      |
| <b>D.E. BRG.</b>   | 25BC02XP30X  |                                |      |
| <b>O.D.E. BRG.</b> | 25BC02XP30X  |                                |      |
| <b>GREASE</b>      | POLYREX EM   |                                |      |
| <b>RPM MAX</b>     | 5400         | <b>MAX. KVAR</b>               | 0.23 |
| <b>BLANK</b>       |              |                                |      |
| <b>INV. TYPE</b>   | PWM          |                                |      |
| <b>T=</b>          | 135          |                                |      |
| <b>C HP FR</b>     | 60           | <b>C HP TO</b>                 | 90   |
| <b>CT HZ FROM</b>  | 6            | <b>CT HZ TO</b>                | 60   |
| <b>VT HZ FROM</b>  | 3            | <b>VT HZ TO</b>                | 60   |
| <b>HTR-VOLTS</b>   |              | <b>HTR-AMPS</b>                |      |
| <b>HTR-WATTS</b>   |              | <b>MAX. SPACE HEATER TEMP.</b> |      |

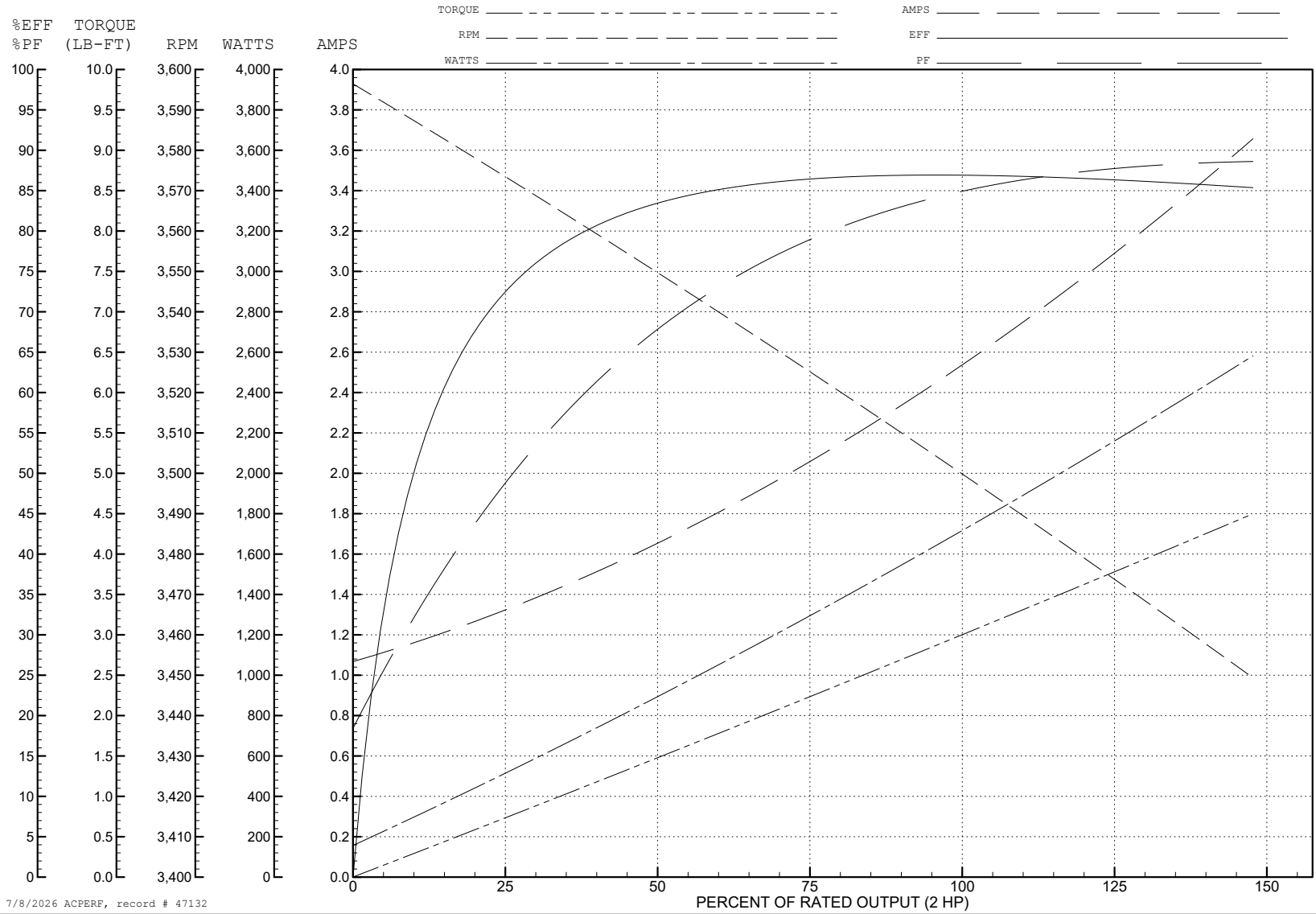
ABB Motors and Mechanical Inc.

WINDING # 05WGW115

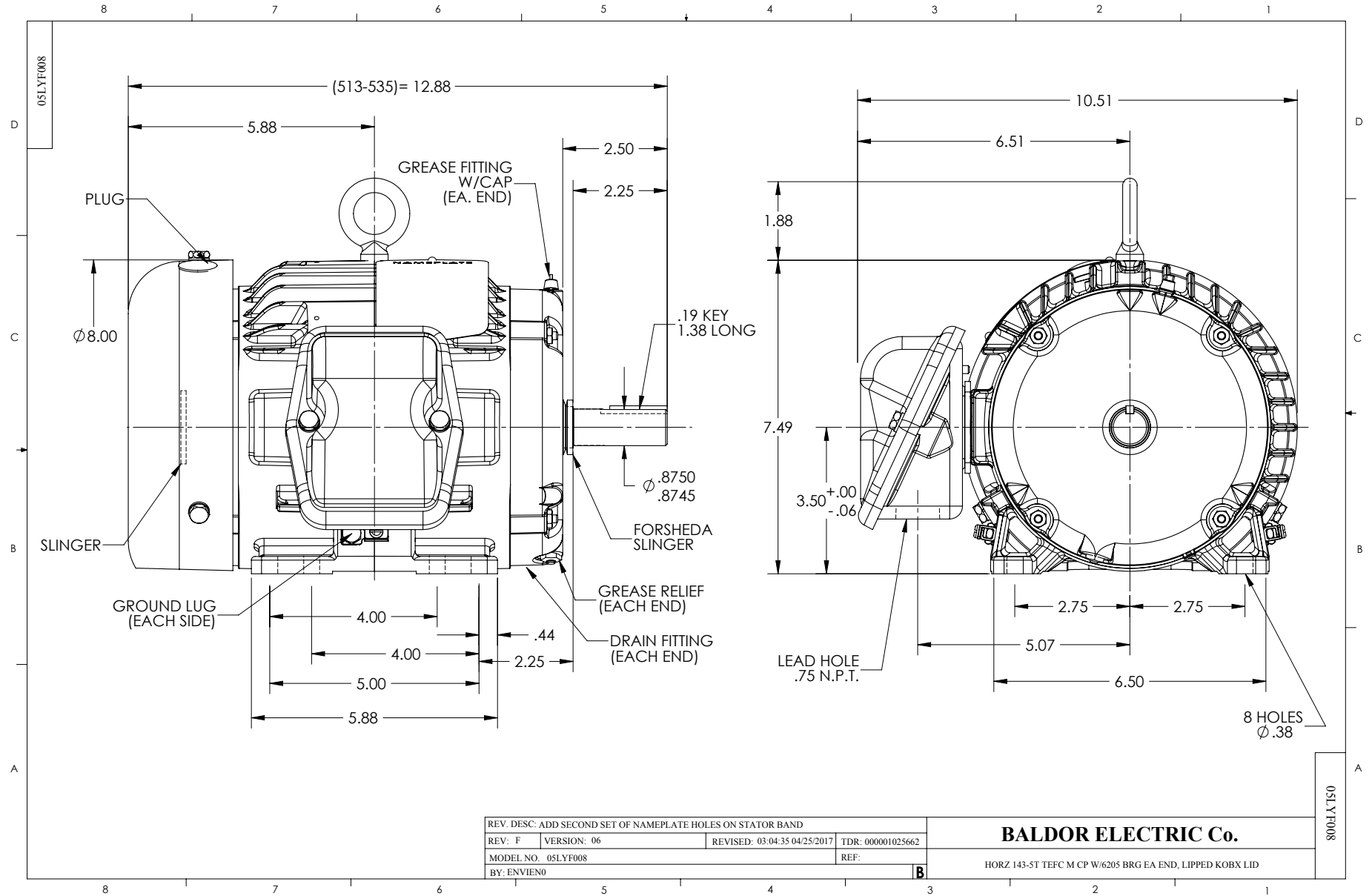
Typical performance - not guaranteed values.

2 HP 3 PH 60 HZ 3450 RPM 460 V 0532M

TORQUES (LB-FT): PO=16 PU=12.5 LR=16 LRA=30



7/8/2026 ACPERF, record # 47132



CD0005

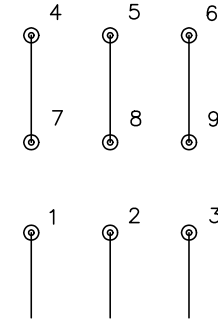


LOW VOLTAGE  
(2Y)



LINE

HIGH VOLTAGE  
(1Y)



LINE

**NOTES:**

1. INTERCHANGE ANY TWO LINE LEADS TO REVERSE ROTATION.
2. OPTIONAL THERMOSTATS ARE PROVIDED WHEN SPECIFIED.
3. ACTUAL NUMBER OF INTERNAL PARALLEL CIRCUITS MAY BE A MULTIPLE OF THOSE SHOWN ABOVE.
4. LEAD COLORS ARE OPTIONAL. LEADS MUST ALWAYS BE NUMBERED AS SHOWN.

CD0005

REV. DESC: REVISE TO SHOW OPTIONAL COLORS

REV. LTR: E | BY: JLP | REVISED: 01/19/99 10:15 | TDR: 0171435

900000

FILE: AAA00005140

MDL: -

MTL: -

**BALDOR ELECTRIC Co.**

3PH, DV, 9 LEADS