



Customer information packet

ECP2395T-4

15HP, 880RPM, 3PH, 60HZ, 286T, 1060M, TEFC, F1

Class - CLI GP A,B,C,D

Division - Division II

Specifications

Enclosure	TEFC
Frame	286T
Frame Material	Iron
Frequency	60.00 Hz
Haz Area Class and Group	CLI GP A,B,C,D
Haz Area Division	Division II
Motor Letter Type	Three Phase
Output @ Frequency	15.000 HP @ 60 HZ
Phase	3
Synchronous Speed @ Frequency	900 RPM @ 60 HZ
Voltage @ Frequency	460.0 V @ 60 HZ
Agency Approvals	CCSA US CSA EEV NEMA PREMIUM NEMA_PREMIUM UR
Ambient Temperature	40 °C
Auxillary Box	No Auxillary Box
Auxillary Box Lead Termination	None
Base Indicator	Rigid
Bearing Grease Type	Polyrex EM (-20F +300F)
Blower	None
Constant Torque Speed Range	6
Current @ Voltage	23.000 A @ 460.0 V
Design Code	B
Drip Cover	No Drip Cover
Duty Rating	CONT
Efficiency @ 100% Load	89.5 %
Electrically Isolated Bearing	Not Electrically Isolated
Feedback Device	NO FEEDBACK
Front Face Code	Standard
Front Shaft Indicator	None

Part detail

Revision	L
Type	AC
Mech. spec.	10H292
Base	
Status	PRD/A
Elec. spec.	10WGZ579
Layout	10LYH292
Eff. date	03-04-2024
CD Diagram	CD0006
Poles	08
Leads	3#12
Proprietary	False
Created date	07-22-2016

Haz Area Temp Code	T3
Heater Indicator	No Heater
High Voltage Full Load Amps	23.0 a
Insulation Class	F
Inverter Code	Inverter Duty
KVA Code	G
Lifting Lugs	Standard Lifting Lugs
Locked Bearing Indicator	Locked Bearing
Max Speed	1350 rpm
Motor Lead Exit	Ko Box
Motor Lead Quantity/Wire Size	3 @ 12 AWG
Motor Lead Termination	Flying Leads
Motor Standards	NEMA
Motor Type	1060M
Mounting Arrangement	F1
Number of Poles	8
Overall Length	28.00 IN
Power Factor	68
Product Family	Super-E Chemical Processing
Pulley End Bearing Type	Ball
Pulley Face Code	Standard
Pulley Shaft Indicator	Standard
Rodent Screen	None
Service Factor	1.15
Shaft Diameter	1.875 IN
Shaft Extension Location	Pulley End
Shaft Ground Indicator	No Shaft Grounding
Shaft Rotation	Reversible
Shaft Slinger Indicator	Shaft Slinger
Speed	880 rpm
Speed Code	Single Speed
Starting Method	Direct on line
Thermal Device - Bearing	None
Thermal Device - Winding	None

Vibration Sensor Indicator	No Vibration Sensor
Winding Thermal 1	None
Winding Thermal 2	None

Nameplate

NP3241

CAT.NO.	ECP2395T-4	P/N		ENCLOSURE	TEFC
SPEC.	10H292Z579G1	CC	010A	FRAME	286T
HP	15	CLASS	F	HZ	60
RPM	880	RPM MAX	1350	PH	3
VOLT	460	MOTOR WEIGHT	479	KVA-CODE	G
AMP	23	SER.F.	1.15	PF	68
RATING	40C AMB-CONT	NEMA-NOM-EFF	89.5	ODE BRG	6311
				DE BRG	6311
				GREASE	POLYREX EM
			INV.TYPE	PWM	
TEMP CODE	T3	INVERTER-TEMP-CODE	200		
TEMP =	200	C HP FR	60	C HP TO	90
CT HZ FROM	6	CT HZ TO	60		
HTR-VOLTS		HTR-AMPS		HTR-WATTS	
				MAX. SPACE HEATER TEMP.	
				VT HZ FROM	3
				VT HZ TO	60

AC Induction Motor Performance Data

Record # 58383

Typical performance - not guaranteed values

Winding: 10WGZ579-R001		Type: 1060M	Enclosure: TEFC	
Nameplate Data			460 V, 60 Hz: Single Voltage Motor	
Rated Output (HP)	15	Full Load Torque	88.8 LB-FT	
Volts	460	Start Configuration	direct on line	
Full Load Amps	23	Breakdown Torque	207 LB-FT	
R.P.M.	880	Pull-up Torque	91 LB-FT	
Hz	60 Phase	Locked-rotor Torque	114 LB-FT	
NEMA Design Code	B KVA Code	Starting Current	106 A	
Service Factor (S.F.)	1.15	No-load Current	13.8 A	
NEMA Nom. Eff.	89.5 Power Factor	Line-line Res. @ 25°C	0.656 Ω	
Rating - Duty	40C AMB-CONT	Temp. Rise @ Rated Load	60°C	
S.F. Amps		Temp. Rise @ S.F. Load	73°C	
		Locked-rotor Power Factor	31.7	
		Rotor inertia	7.36 LB-FT ²	

Load Characteristics 460 V, 60 Hz, 15 HP

% of Rated Load	25	50	75	100	125	150	S.F.
Power Factor	29	48	60	68	70	72	69
Efficiency	82.1	88.3	89.8	89.6	88.9	87.1	89.2
Speed	896	893	889	884	879	872	881
Line amperes	14.5	16.5	19.5	23.4	28.1	33.6	26.2

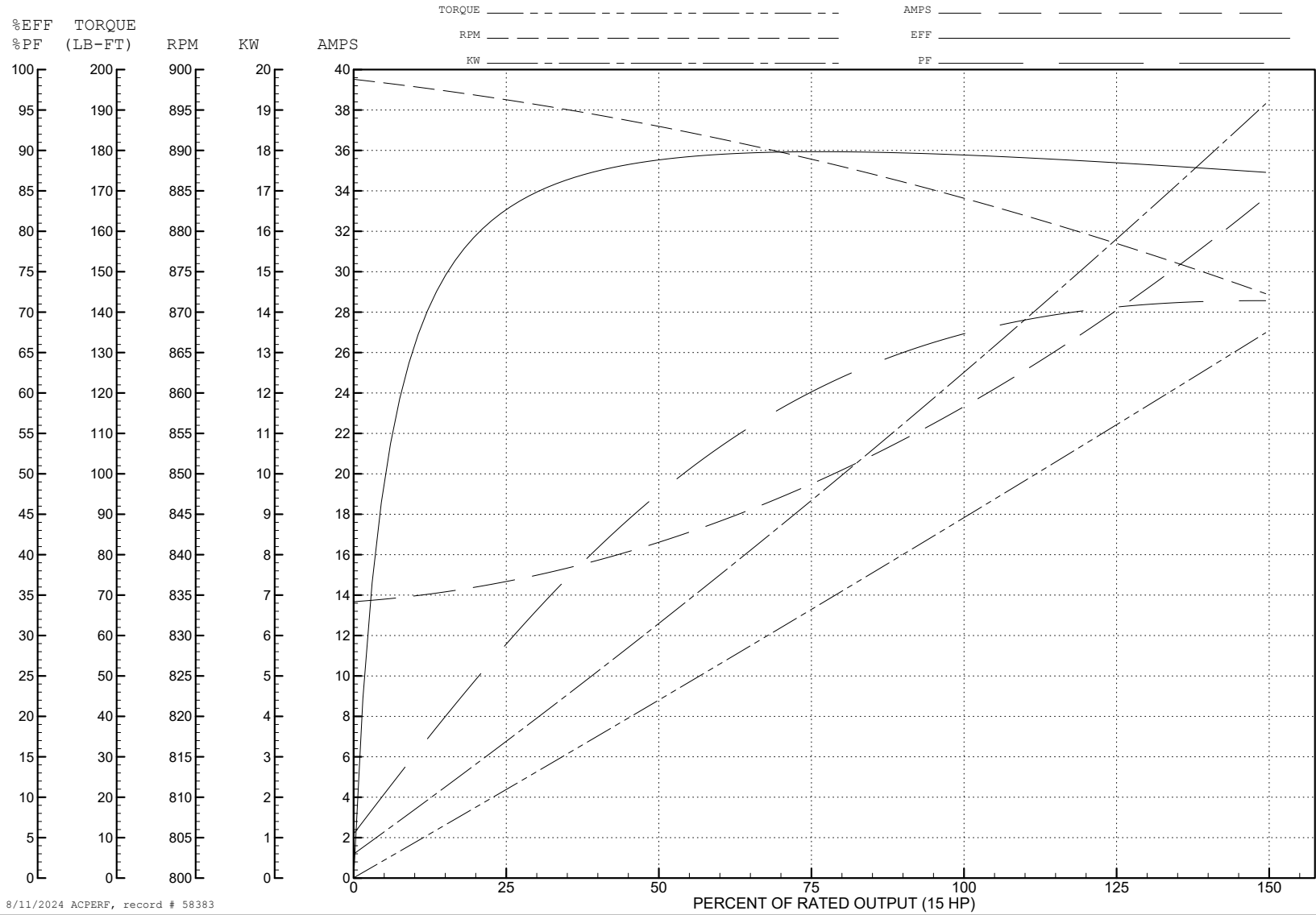
ABB Motors and Mechanical Inc.

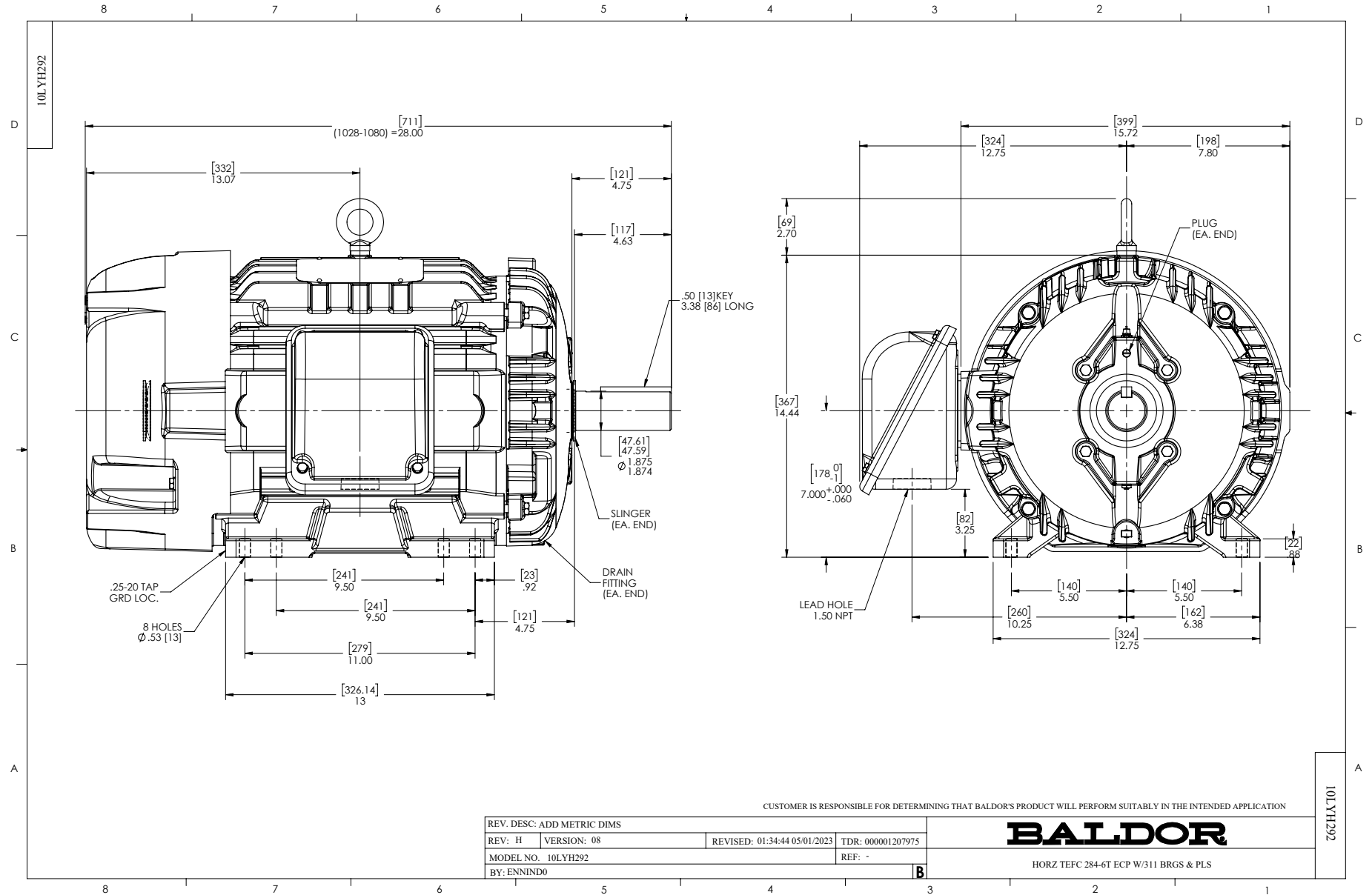
WINDING # 10WGZ579

Typical performance - not guaranteed values.

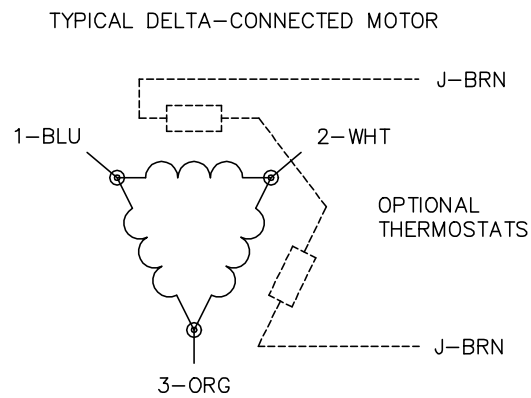
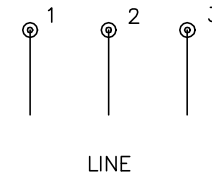
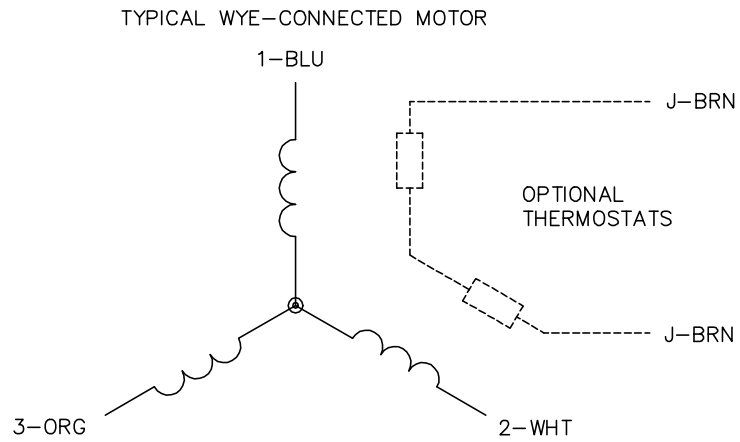
15 HP 3 PH 60 HZ 880 RPM 460 V 1060M

TORQUES (LB-FT): PO=207 PU=91 LR=114 LRA=106





CD0006



NOTES:

1. THREE LEAD MOTOR MAY BE EITHER WYE CONNECTED OR DELTA CONNECTED.
2. INTERCHANGE ANY TWO LINE LEADS TO REVERSE ROTATION.
3. OPTIONAL THERMOSTATS ARE PROVIDED WHEN SPECIFIED.
4. ACTUAL NUMBER OF INTERNAL PARALLEL CIRCUITS MAY VARY.
5. LEAD COLORS ARE OPTIONAL. LEADS MUST BE NUMBERED AS SHOWN.

CD0006

REV. DESC: ADD CLASS CONN00000007		
REV. LTR: E	VERSION: 01	TDR: 000001099922
FILE: \AAA\00005\141	REVISED: 10:24:49 02/19/2019	BY: ENBRIRO
MTL: -	© □	

BALDOR - RELIANCE®

3PH, SV, 3 LEADS, WYE OR DELTA CONNECTED

SH 1 of 1