

**BALDOR • RELIANCE**

---

# Customer information packet

## EBM3734TY-DI

10HP, 1770RPM, 3PH, 60HZ, 215T, 3752M, TEFC, F1

Class - None

Division - Not Applicable

## Specifications

Enclosure	TEFC
Frame	215T
Frame Material	Steel
Frequency	60.00 Hz
Haz Area Class and Group	None
Haz Area Division	Not Applicable
Motor Letter Type	Three Phase
Output @ Frequency	10.000 HP @ 60 HZ
Phase	3
Synchronous Speed @ Frequency	1800 RPM @ 60 HZ
Voltage @ Frequency	230.0 V @ 60 HZ 460.0 V @ 60 HZ
Agency Approvals	CSA CSA EEV NEMA PREMIUM UR
Ambient Temperature	40 °C
Auxillary Box	No Auxillary Box
Auxillary Box Lead Termination	None
Base Indicator	Rigid
Bearing Grease Type	Polyrex EM (-20F +300F)
Blower	None
Current @ Voltage	27.000 A @ 208.0 V 25.000 A @ 230.0 V 12.500 A @ 460.0 V
Design Code	A
Drip Cover	No Drip Cover
Duty Rating	CONT
Efficiency @ 100% Load	91.7 %
Electrically Isolated Bearing	Not Electrically Isolated
Feedback Device	NO FEEDBACK
Front Shaft Indicator	None

## Part detail

Revision	B
Type	AC
Mech. spec.	37H582
Base	
Status	PRD/A
Elec. spec.	37WGL865
Layout	37LYH582
Eff. date	05-02-2024
CD Diagram	CD0005
Poles	04
Leads	9#14
Proprietary	False
Created date	01-29-2021

Heater Indicator	No Heater
High Voltage Full Load Amps	12.5 a
Insulation Class	F
Inverter Code	Inverter Ready
KVA Code	K
Lifting Lugs	Standard Lifting Lugs
Locked Bearing Indicator	No Locked Bearing
Motor Lead Quantity/Wire Size	9 @ 14 AWG
Motor Lead Termination	Flying Leads
Motor Standards	NEMA
Motor Type	3752M
Mounting Arrangement	F1
Number of Poles	4
Overall Length	27.20 IN
Power Factor	85
Product Family	General Purpose
Pulley End Bearing Type	Ball
Pulley Face Code	Standard
Pulley Shaft Indicator	Standard
Rodent Screen	None
RoHS Status	ROHS COMPLIANT
Service Factor	1.15
Shaft Diameter	1.375 IN
Shaft Ground Indicator	No Shaft Grounding
Shaft Rotation	Reversible
Shaft Slinger Indicator	No Slinger
Speed	1770 rpm
Speed Code	Single Speed
Starting Method	Direct on line
Thermal Device - Bearing	None
Thermal Device - Winding	None
Vibration Sensor Indicator	No Vibration Sensor
Winding Thermal 1	None
Winding Thermal 2	None

**Nameplate**

<b>NP1259L</b>									
<b>CAT.NO.</b>	EBM3734TY-DI								
<b>SPEC.</b>	37H582L865G1								
<b>HP</b>	10								
<b>VOLTS</b>	230/460								
<b>AMP</b>	25/12.5								
<b>RPM</b>	1770								
<b>FRAME</b>	215T		<b>HZ</b>	60		<b>PH</b>	3		
<b>SER.F.</b>	1.15	<b>CODE</b>	K	<b>DES</b>	A	<b>CL</b>	F		
<b>NEMA-NOM-EFF</b>	91.7	<b>PF</b>	85						
<b>RATING</b>	40C AMB-CONT								
<b>CC</b>	010A								
<b>DE</b>	6307	<b>ODE</b>	6306						
<b>ENCL</b>	TEFC	<b>SN</b>							

**AC Induction Motor Performance Data**

Record # 85459

Preliminary Data Sheet

<b>Winding:</b> 37WGL865-R001		<b>Type:</b> 3752M		<b>Enclosure:</b> TEFC	
<b>Nameplate Data</b>			<b>460 V, 60 Hz: High Voltage Connection</b>		
<b>Rated Output (HP)</b>	10	<b>Full Load Torque</b>	29.7 LB-FT		
<b>Volts</b>	230/460	<b>Start Configuration</b>	direct on line		
<b>Full Load Amps</b>	25/12.5	<b>Breakdown Torque</b>	102 LB-FT		
<b>R.P.M.</b>	1770	<b>Pull-up Torque</b>	46.9 LB-FT		
<b>Hz</b>	60 <b>Phase</b>	3	<b>Locked-rotor Torque</b>	62.2 LB-FT	
<b>NEMA Design Code</b>	A <b>KVA Code</b>	K	<b>Starting Current</b>	101 A	
<b>Service Factor (S.F.)</b>	1.15	<b>No-load Current</b>	5.33 A		
<b>NEMA Nom. Eff.</b>	91.7 <b>Power Factor</b>	85	<b>Line-line Res. @ 25°C</b>	0.957 Ω	
<b>Rating - Duty</b>	40C AMB-CONT		<b>Temp. Rise @ Rated Load</b>	69°C	
<b>S.F. Amps</b>			<b>Temp. Rise @ S.F. Load</b>	86°C	
			<b>Locked-rotor Power Factor</b>	35.8	
			<b>Rotor inertia</b>	1.28 LB-FT <sup>2</sup>	

**Load Characteristics 460 V, 60 Hz, 10 HP**

<b>% of Rated Load</b>	<b>25</b>	<b>50</b>	<b>75</b>	<b>100</b>	<b>125</b>	<b>150</b>	<b>S.F.</b>
<b>Power Factor</b>	44	66	77	81	84	85	84
<b>Efficiency</b>	88.4	91.8	92.4	92.1	91	89.9	91.4
<b>Speed</b>	1793	1786	1778	1770	1761	1751	1762
<b>Line amperes</b>	6.05	7.73	9.9	12.5	15.3	18.3	14.1

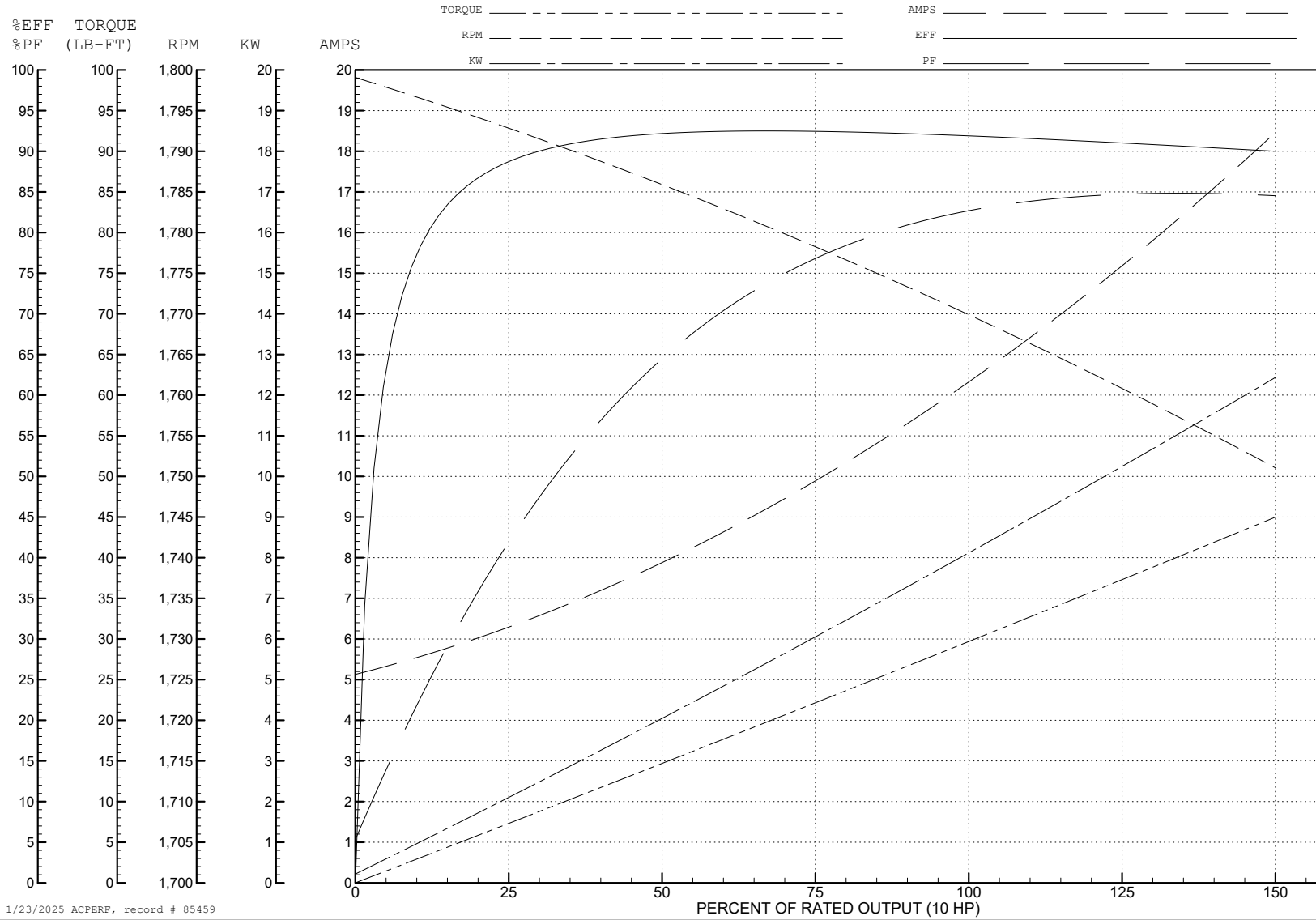
ABB Motors and Mechanical Inc.

WINDING # 37WGL865

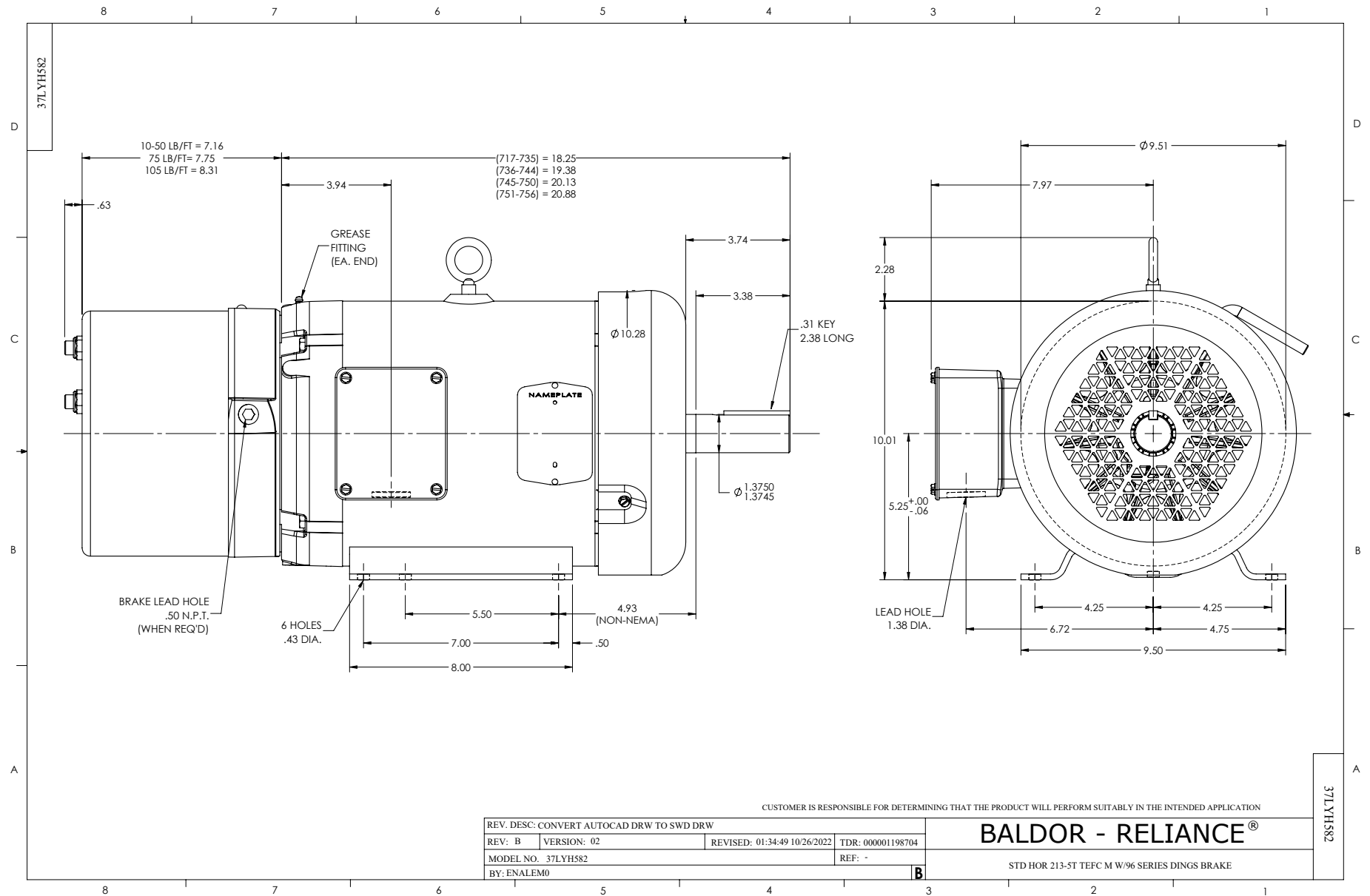
Typical performance - not guaranteed values.

10 HP 3 PH 60 HZ 1770 RPM 460 V 3752M

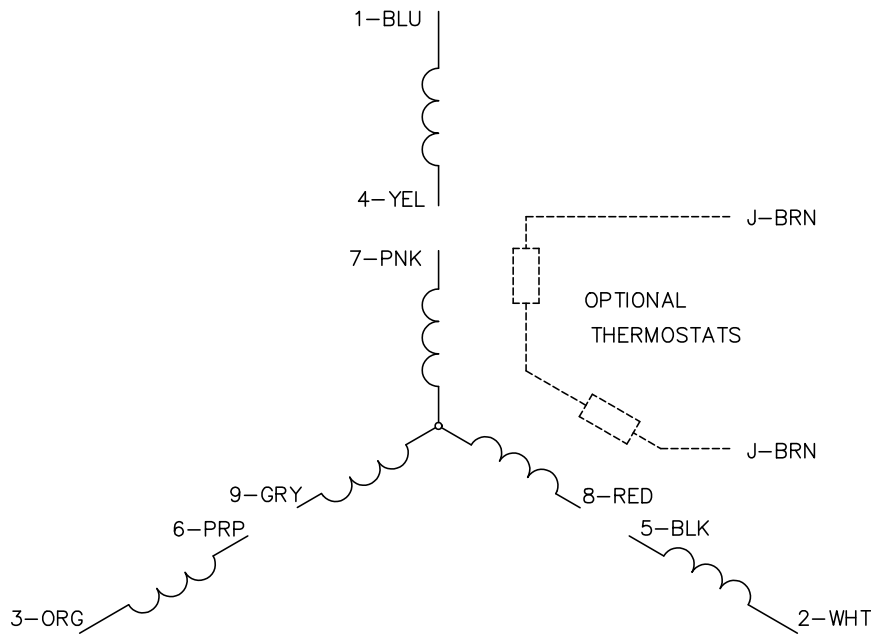
TORQUES (LB-FT): PO=102 PU=46.9 LR=62.2 LRA=101



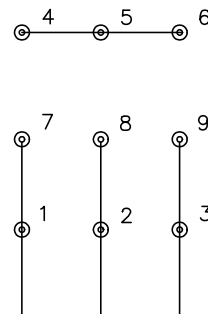
1/23/2025 ACPERF, record # 85459



CD0005

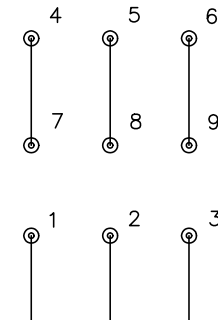


LOW VOLTAGE  
(2Y)



LINE

HIGH VOLTAGE  
(1Y)



LINE

**NOTES:**

1. INTERCHANGE ANY TWO LINE LEADS TO REVERSE ROTATION.
2. OPTIONAL THERMOSTATS ARE PROVIDED WHEN SPECIFIED.
3. ACTUAL NUMBER OF INTERNAL PARALLEL CIRCUITS MAY BE A MULTIPLE OF THOSE SHOWN ABOVE.
4. LEAD COLORS ARE OPTIONAL. LEADS MUST ALWAYS BE NUMBERED AS SHOWN.

CD0005

REV. DESC: REVISE TO SHOW OPTIONAL COLORS			
REV. LTR: E	BY: JLP	REVISED: 01/19/99 10:15	TDR: 0171435
S00000		FILE: AAA00005140	MDL: -
		MTL: -	

**BALDOR ELECTRIC Co.**

3PH, DV, 9 LEADS