



Customer information packet

EBM3615T

5HP, 1750RPM, 3PH, 60HZ, 184T, 3642M, TEFC, F1

Class - None

Division - Not Applicable

Specifications

Enclosure	TEFC
Frame	184T
Frame Material	Steel
Frequency	60.00 Hz
Motor Letter Type	Three Phase
Output @ Frequency	5.000 HP @ 60 HZ
Phase	3
Synchronous Speed @ Frequency	1800 RPM @ 60 HZ
Voltage @ Frequency	460.0 V @ 60 HZ 230.0 V @ 60 HZ
XP Class and Group	None
XP Division	Not Applicable
Agency Approvals	CSA CSA EEV UR
Ambient Temperature	40 °C
Auxillary Box	No Auxillary Box
Auxillary Box Lead Termination	None
Base Indicator	Rigid
Bearing Grease Type	Polyrex EM (-20F +300F)
Blower	None
Brake Torque	25.0 lb-ft
Current @ Voltage	13.900 A @ 208.0 V 6.700 A @ 460.0 V 13.400 A @ 230.0 V
Design Code	B
Drip Cover	No Drip Cover
Duty Rating	CONT
Efficiency @ 100% Load	89.5 %
Electrically Isolated Bearing	Not Electrically Isolated
Feedback Device	NO FEEDBACK
Front Face Code	Brake Mounting

Part detail

Revision	R
Type	AC
Mech. spec.	36R030
Base	
Status	PRD/A
Elec. spec.	36WGS268
Layout	36LYR030
Eff. date	10-16-2023
CD Diagram	CD0005
Poles	04
Leads	9#16
Proprietary	False
Created date	08-02-2010

Front Shaft Indicator	None
Heater Indicator	No Heater
High Voltage Full Load Amps	6.7 a
Insulation Class	F
Inverter Code	Inverter Ready
KVA Code	J
Lifting Lugs	No Lifting Lugs
Locked Bearing Indicator	No Locked Bearing
Motor Lead Exit	Ko Box
Motor Lead Quantity/Wire Size	9 @ 16 AWG
Motor Lead Termination	Flying Leads
Motor Standards	NEMA
Motor Type	3642M
Mounting Arrangement	F1
Number of Poles	4
Overall Length	22.65 IN
Power Factor	78
Product Family	General Purpose
Pulley End Bearing Type	Ball
Pulley Face Code	Standard
Pulley Shaft Indicator	Standard
Rodent Screen	None
RoHS Status	ROHS COMPLIANT
Service Factor	1.15
Shaft Diameter	1.125 IN
Shaft Extension Location	Pulley End
Shaft Ground Indicator	No Shaft Grounding
Shaft Rotation	Reversible
Shaft Slinger Indicator	No Slinger
Speed	1750 rpm
Speed Code	Single Speed
Starting Method	Direct on line
Thermal Device - Bearing	None
Thermal Device - Winding	None

Vibration Sensor Indicator	No Vibration Sensor
Winding Thermal 1	None
Winding Thermal 2	None

Nameplate

NP1259L									
CAT.NO.	EBM3615T								
SPEC.	36R030S268G1								
HP	5								
VOLTS	230/460								
AMP	13.4/6.7								
RPM	1750								
FRAME	184T		HZ	60		PH	3		
SER.F.	1.15	CODE	J	DES	B	CL	F		
NEMA-NOM-EFF	89.5	PF	78						
RATING	40C AMB-CONT								
CC	010A								
DE	6206	ODE	6205						
ENCL	TEFC	SN							

AC Induction Motor Performance Data

Record # 35063

Typical performance - not guaranteed values

Winding: 36WGS268-R016		Type: 3642M		Enclosure: TEFC	
Nameplate Data			460 V, 60 Hz: High Voltage Connection		
Rated Output (HP)	5		Full Load Torque	14.9 LB-FT	
Volts	230/460		Start Configuration	direct on line	
Full Load Amps	13.4/6.7		Breakdown Torque	52.2 LB-FT	
R.P.M.	1750		Pull-up Torque	31.5 LB-FT	
Hz	60 Phase	3	Locked-rotor Torque	34.9 LB-FT	
NEMA Design Code	B KVA Code	J	Starting Current	49.1 A	
Service Factor (S.F.)	1.15		No-load Current	3.24 A	
NEMA Nom. Eff.	89.5 Power Factor	78	Line-line Res. @ 25°C	2.27 Ω	
Rating - Duty	40C AMB-CONT		Temp. Rise @ Rated Load	71°C	
S.F. Amps			Temp. Rise @ S.F. Load	87°C	
			Locked-rotor Power Factor	39.8	
			Rotor inertia	0.391 LB-FT ²	

Load Characteristics 460 V, 60 Hz, 5 HP

% of Rated Load	25	50	75	100	125	150	S.F.
Power Factor	39	60	72	78	83	83	81
Efficiency	85	89.7	90.6	89.6	88.6	87	89
Speed	1789	1776	1762	1750	1733	1714	1740
Line amperes	3.55	4.31	5.43	6.65	7.94	9.64	7.42

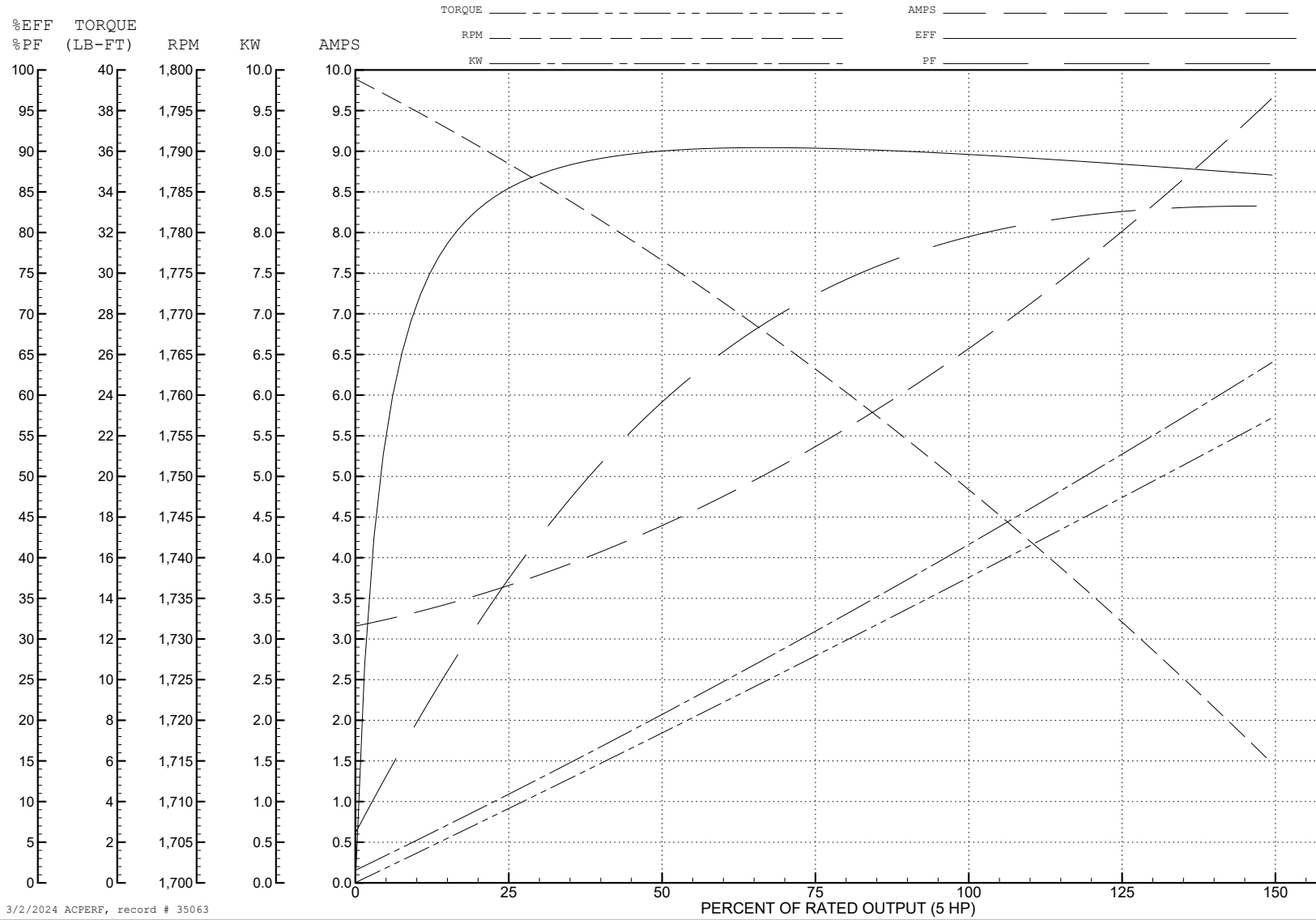
ABB Motors and Mechanical Inc.

WINDING # 36WGS268

Typical performance - not guaranteed values.

5 HP 3 PH 60 HZ 1750 RPM 460 V 3642M

TORQUES (LB-FT): PO=52.2 PU=31.5 LR=34.9 LRA=49.1



3/2/2024 ACPERF, record # 35063

AC Induction Motor Performance Data

Record # 93277

Typical performance - not guaranteed values

Winding: 36WGS268-R016		Type: 3642M		Enclosure: TEFC	
Nameplate Data			230 V, 60 Hz: Low Voltage Connection		
Rated Output (HP)		5	Full Load Torque		14.9 LB-FT
Volts		230/460	Start Configuration		direct on line
Full Load Amps		13.4/6.7	Breakdown Torque		52.2 LB-FT
R.P.M.		1750	Pull-up Torque		31.5 LB-FT
Hz	60 Phase	3	Locked-rotor Torque		34.9 LB-FT
NEMA Design Code	B KVA Code	J	Starting Current		98.2 A
Service Factor (S.F.)		1.15	No-load Current		6.48 A
NEMA Nom. Eff.	89.5 Power Factor	78	Line-line Res. @ 25°C		0.567 Ω
Rating - Duty		40C AMB-CONT	Temp. Rise @ Rated Load		71°C
S.F. Amps			Temp. Rise @ S.F. Load		86°C
			Locked-rotor Power Factor		39.8
			Rotor inertia		0.391 lb-ft ²

Load Characteristics 230 V, 60 Hz, 5 HP

% of Rated Load	25	50	75	100	125	150	S.F.
Power Factor	38	60	72	78	83	83	81
Efficiency	84.9	89.6	90.5	89.6	88.5	87	88.9
Speed	1789	1776	1762	1750	1733	1714	1740
Line amperes	7.1	8.62	10.86	13.3	15.88	19.28	14.8

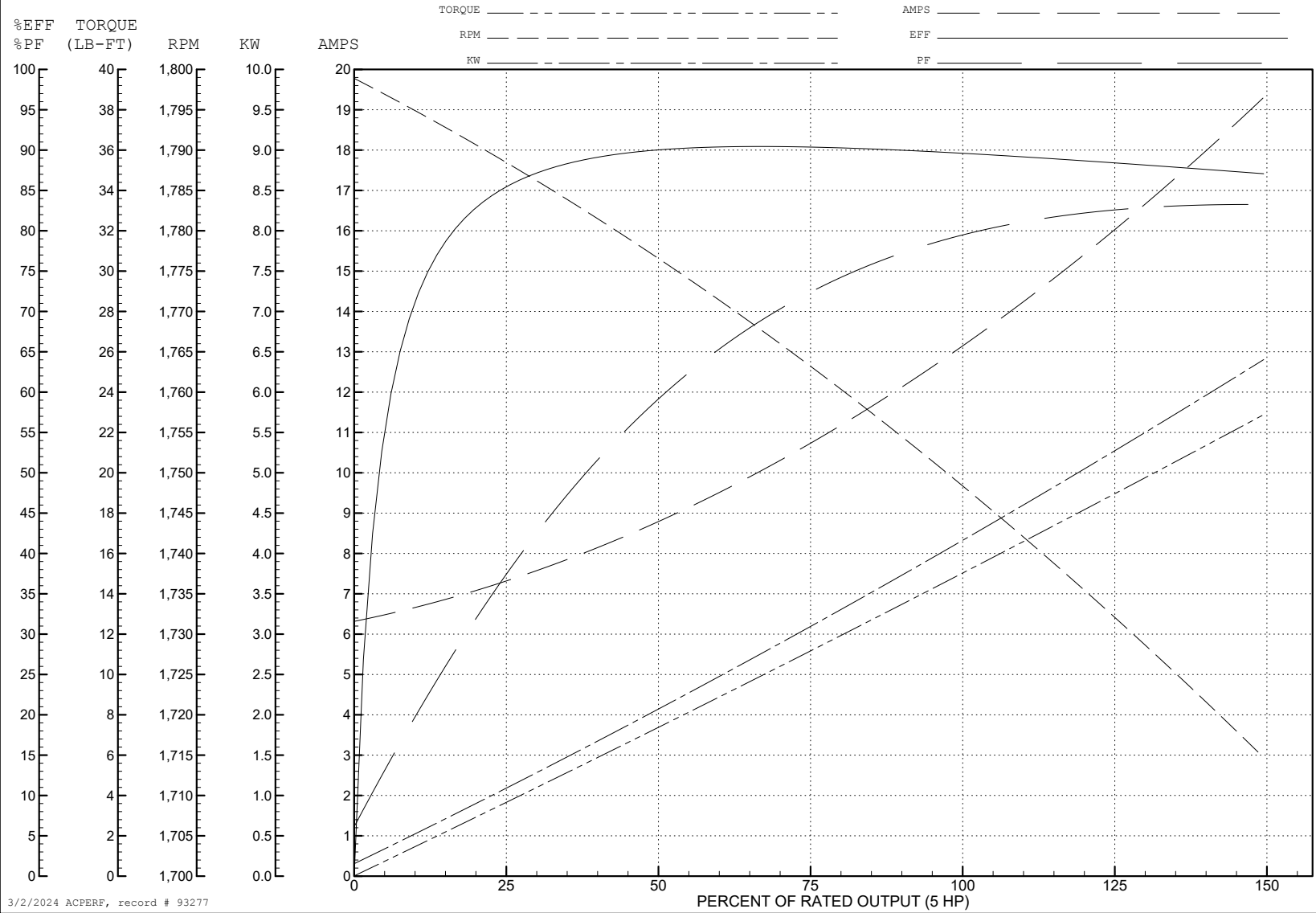
ABB Motors and Mechanical Inc.

WINDING # 36WGS268

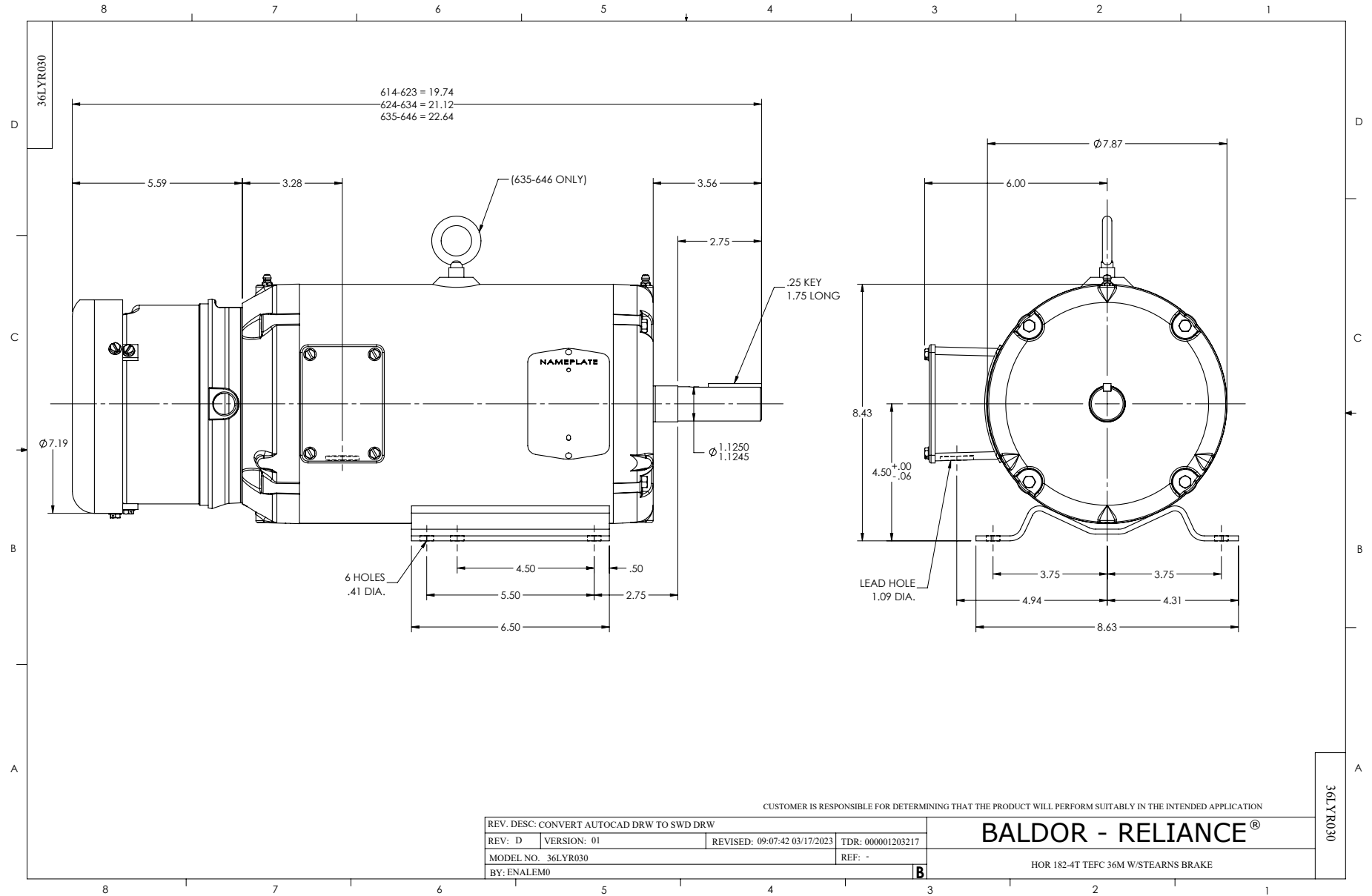
5 HP 3 PH 60 HZ 1750 RPM 230 V 3642M

Typical performance - not guaranteed values.

TORQUES (LB-FT): PO=52.2 PU=31.5 LR=34.9 LRA=98.2



3/2/2024 ACPERF, record # 93277



CD0005

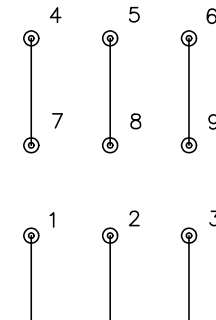


LOW VOLTAGE
(2Y)



LINE

HIGH VOLTAGE
(1Y)



LINE

NOTES:

1. INTERCHANGE ANY TWO LINE LEADS TO REVERSE ROTATION.
2. OPTIONAL THERMOSTATS ARE PROVIDED WHEN SPECIFIED.
3. ACTUAL NUMBER OF INTERNAL PARALLEL CIRCUITS MAY BE A MULTIPLE OF THOSE SHOWN ABOVE.
4. LEAD COLORS ARE OPTIONAL. LEADS MUST ALWAYS BE NUMBERED AS SHOWN.

CD0005

REV. DESC: REVISE TO SHOW OPTIONAL COLORS			
REV. LTR: E	BY: JLP	REVISED: 01/19/99 10:15	TDR: 0171435
S00000		FILE: AAA00005140	MDL: -
		MTL: -	

BALDOR ELECTRIC Co.

3PH, DV, 9 LEADS