

BALDOR • RELIANCE

Customer information packet

EBM3611T-D

3HP, 1760RPM, 3PH, 60HZ, 182T, 3628M, TEFC, F3

Class - None

Division - Not Applicable

Specifications

Enclosure	TEFC
Frame	182T
Frame Material	Steel
Frequency	60.00 Hz
Haz Area Class and Group	None
Haz Area Division	Not Applicable
Motor Letter Type	Three Phase
Output @ Frequency	3.000 HP @ 60 HZ
Phase	3
Synchronous Speed @ Frequency	1800 RPM @ 60 HZ
Voltage @ Frequency	460.0 V @ 60 HZ 230.0 V @ 60 HZ
Agency Approvals	CSA CSA EEV UR
Ambient Temperature	40 °C
Auxillary Box	No Auxillary Box
Auxillary Box Lead Termination	None
Base Indicator	Rigid
Bearing Grease Type	Polyrex EM (-20F +300F)
Blower	None
Brake Torque	15.0 lb-ft
Current @ Voltage	8.200 A @ 230.0 V 8.600 A @ 208.0 V 4.100 A @ 460.0 V
Design Code	B
Drip Cover	No Drip Cover
Duty Rating	CONT
Efficiency @ 100% Load	89.5 %
Electrically Isolated Bearing	Not Electrically Isolated
Feedback Device	NO FEEDBACK
Front Face Code	Fan Housing Cover For Brake

Part detail

Revision	L
Type	AC
Mech. spec.	36N108
Base	
Status	PRD/A
Elec. spec.	36WGY434
Layout	36LYN108
Eff. date	05-01-2024
CD Diagram	CD0005
Poles	04
Leads	9#16
Proprietary	False
Created date	06-14-2010

Front Shaft Indicator	None
Heater Indicator	No Heater
High Voltage Full Load Amps	4.1 a
Insulation Class	F
Inverter Code	Inverter Ready
KVA Code	K
Lifting Lugs	No Lifting Lugs
Locked Bearing Indicator	Locked Bearing
Motor Lead Exit	Ko Box
Motor Lead Quantity/Wire Size	9 @ 16 AWG
Motor Lead Termination	Flying Leads
Motor Standards	NEMA
Motor Type	3628M
Mounting Arrangement	F3
Number of Poles	4
Overall Length	21.64 IN
Power Factor	77
Product Family	General Purpose
Pulley End Bearing Type	Ball
Pulley Face Code	Standard
Pulley Shaft Indicator	Standard
Rodent Screen	None
Service Factor	1.15
Shaft Diameter	1.125 IN
Shaft Extension Location	Pulley End
Shaft Ground Indicator	No Shaft Grounding
Shaft Rotation	Reversible
Shaft Slinger Indicator	No Slinger
Speed	1760 rpm
Speed Code	Single Speed
Starting Method	Direct on line
Thermal Device - Bearing	None
Thermal Device - Winding	None
Vibration Sensor Indicator	No Vibration Sensor

Winding Thermal 1

None

Winding Thermal 2

None

Nameplate

NP1259L									
CAT.NO.	EBM3611T-D								
SPEC.	36N108Y434G1								
HP	3								
VOLTS	230/460								
AMP	8.2/4.1								
RPM	1760								
FRAME	182T		HZ	60		PH	3		
SER.F.	1.15	CODE	K	DES	B	CL	F		
NEMA-NOM-EFF	89.5	PF	77						
RATING	40C AMB-CONT								
CC	010A								
DE	6206		ODE	6205					
ENCL	TEFC	SN							

AC Induction Motor Performance Data

Record # 53377

Typical performance - not guaranteed values

Winding: 36WGY434-R030		Type: 3628M		Enclosure: OPSB	
Nameplate Data			460 V, 60 Hz: High Voltage Connection		
Rated Output (HP)	3		Full Load Torque	9 LB-FT	
Volts	230/460		Start Configuration	direct on line	
Full Load Amps	8.2/4.1		Breakdown Torque	31 LB-FT	
R.P.M.	1760		Pull-up Torque	16.5 LB-FT	
Hz	60 Phase	3	Locked-rotor Torque	22 LB-FT	
NEMA Design Code	B KVA Code	K	Starting Current	32 A	
Service Factor (S.F.)	1.15		No-load Current	2.2 A	
NEMA Nom. Eff.	89.5 Power Factor	77	Line-line Res. @ 25°C	3.84 Ω	
Rating - Duty	40C AMB-CONT		Temp. Rise @ Rated Load	41°C	
S.F. Amps			Temp. Rise @ S.F. Load	50°C	
			Locked-rotor Power Factor	42	
			Rotor inertia	0.263 LB-FT ²	

Load Characteristics 460 V, 60 Hz, 3 HP

% of Rated Load	25	50	75	100	125	150	S.F.
Power Factor	37	58	71	77	81	83	79
Efficiency	84	89.1	90	89.7	88.7	87.3	89.1
Speed	1788	1778	1767	1756	1743	1729	1748
Line amperes	2.3	2.8	3.4	4.1	4.9	5.8	4.6

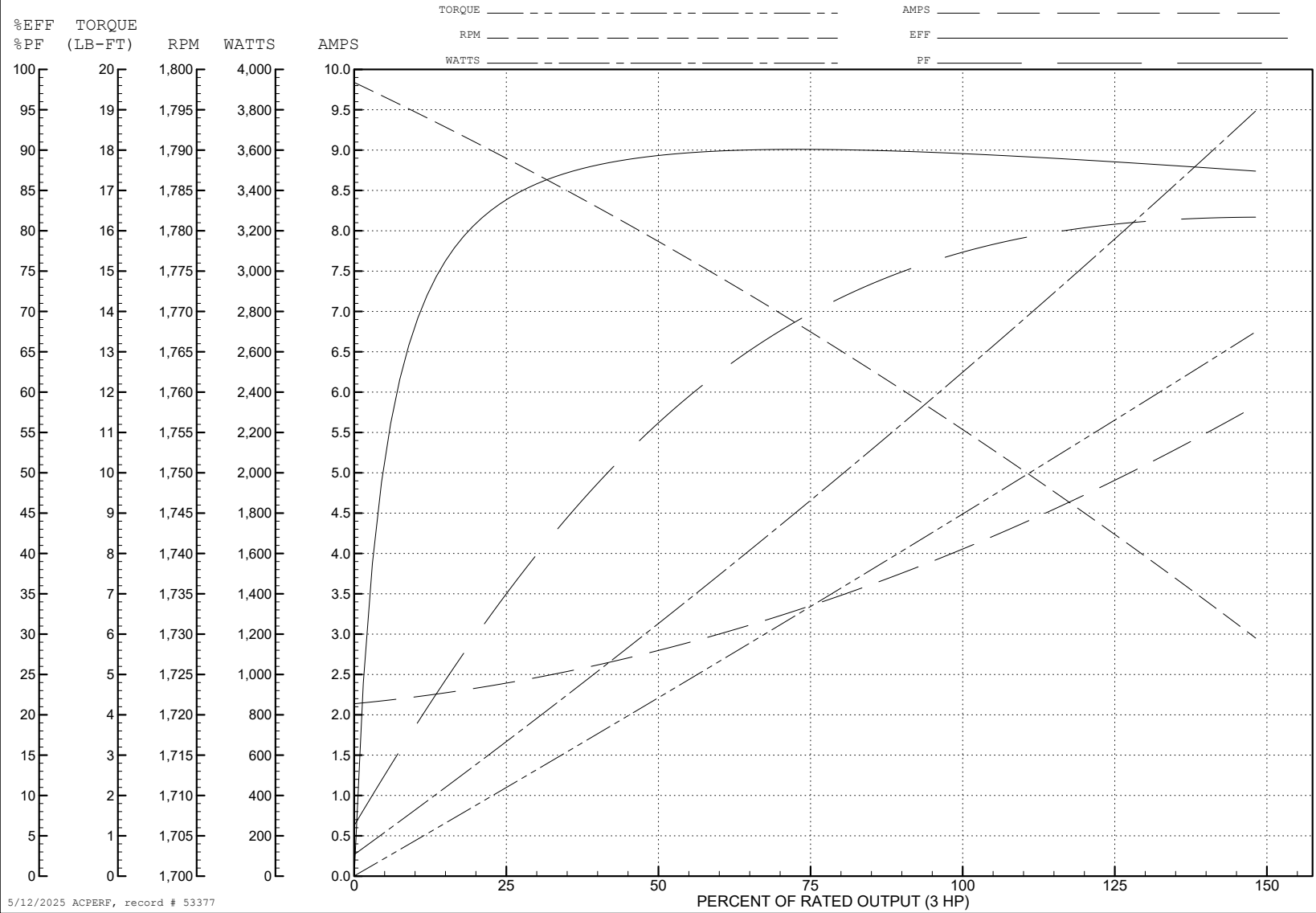
ABB Motors and Mechanical Inc.

WINDING # 36WGY434

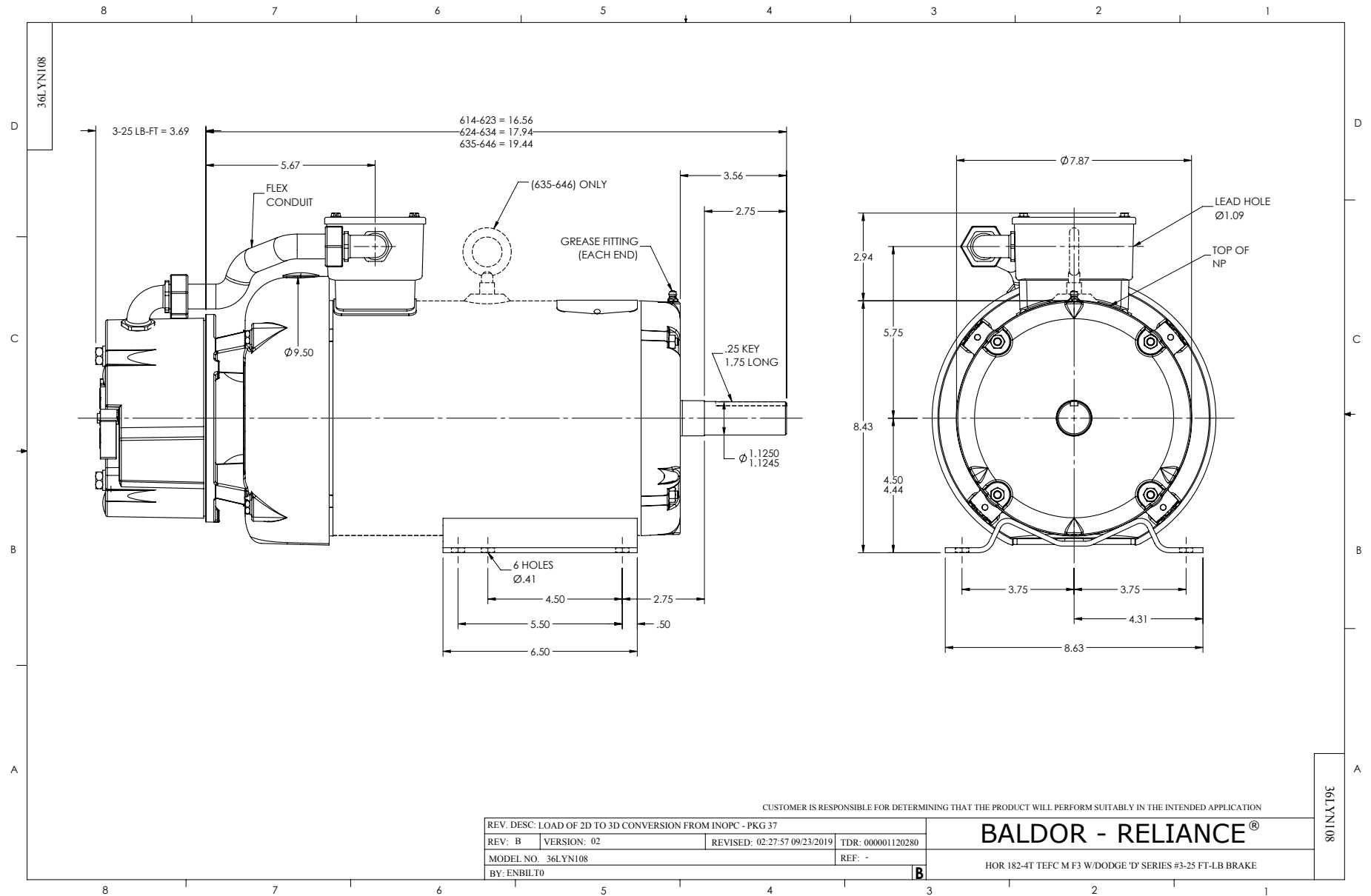
3 HP 3 PH 60 HZ 1760 RPM 460 V 3628M

Typical performance - not guaranteed values.

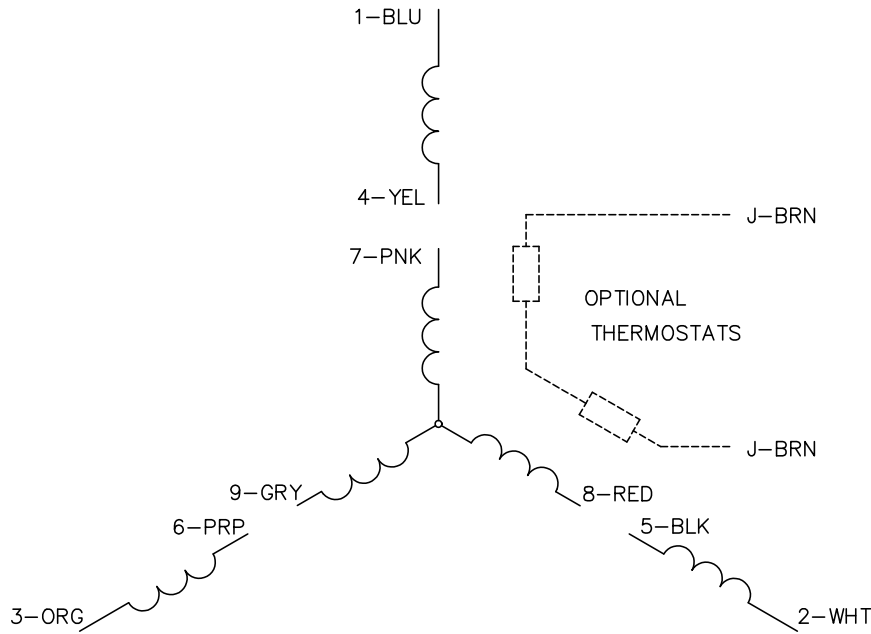
TORQUES (LB-FT): PO=31 PU=16.5 LR=22 LRA=32



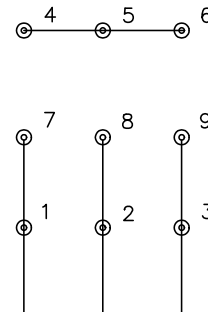
5/12/2025 ACPERF, record # 53377



CD0005

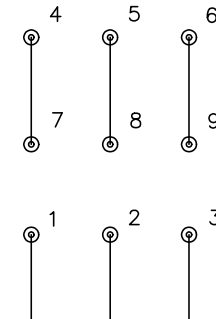


LOW VOLTAGE
(2Y)



LINE

HIGH VOLTAGE
(1Y)



LINE

NOTES:

1. INTERCHANGE ANY TWO LINE LEADS TO REVERSE ROTATION.
2. OPTIONAL THERMOSTATS ARE PROVIDED WHEN SPECIFIED.
3. ACTUAL NUMBER OF INTERNAL PARALLEL CIRCUITS MAY BE A MULTIPLE OF THOSE SHOWN ABOVE.
4. LEAD COLORS ARE OPTIONAL. LEADS MUST ALWAYS BE NUMBERED AS SHOWN.

CD0005

REV. DESC: REVISE TO SHOW OPTIONAL COLORS			
REV. LTR: E	BY: JLP	REVISED: 01/19/99 10:15	TDR: 0171435
S00000		FILE: AAA00005140	MDL: -
		MTL: -	

BALDOR ELECTRIC Co.

3PH, DV, 9 LEADS

CD2120

WIRING CONNECTIONS (1 PHASE VAC)

	POWER LINE A	POWER LINE B	CAP TOGETHER	CAP ALONE
AC LOW VOLT.	B1	B2	B3 & B5	B4
AC HIGH VOLT.	B1 & B5	B2	---	B3 CAP ALONE B4 CAP ALONE
DC VOLT.	B1	B2	B3 & B5	B4

B1 WHITE
B2 BLACK
B3 GRAY
B4 BLUE
B5 RED

CD2120

REV. DESC: NEW		
REV. LTR: -	VERSION: 00	TDR: 000000741785
FILE: \CKA\00037\282	REVISED: 12: 28:11 04/12/2012	
MTL: -	BY: CKRONSO	

BALDOR • DODGE • RELIANCE

D-SERIES MOTOR BRAKE 5LD AC\DC

SH 1 of 1