

# **ABB BALDOR RELIANCE III**

---

## **Customer information packet**

EBM3546T

1HP, 1770RPM, 3PH, 60HZ, 143T, 3520M, TEFC, F1

Class - None

Division - Not Applicable

**Specifications**

|                                       |                                                             |
|---------------------------------------|-------------------------------------------------------------|
| <b>Enclosure</b>                      | TEFC                                                        |
| <b>Frame</b>                          | 143T                                                        |
| <b>Frame Material</b>                 | Steel                                                       |
| <b>Frequency</b>                      | 60.00 Hz                                                    |
| <b>Haz Area Class and Group</b>       | None                                                        |
| <b>Haz Area Division</b>              | Not Applicable                                              |
| <b>Motor Letter Type</b>              | Three Phase                                                 |
| <b>Output @ Frequency</b>             | 1.000 HP @ 60 HZ                                            |
| <b>Phase</b>                          | 3                                                           |
| <b>Synchronous Speed @ Frequency</b>  | 1800 RPM @ 60 HZ                                            |
| <b>Voltage @ Frequency</b>            | 230.0 V @ 60 HZ<br>460.0 V @ 60 HZ                          |
| <b>Agency Approvals</b>               | CSA EEV<br>NEMA PREMIUM<br>NEMA_PREMIUM<br>UR               |
| <b>Ambient Temperature</b>            | 40 °C                                                       |
| <b>Auxiliary Box</b>                  | NO AUXILLARY BOX                                            |
| <b>Auxiliary Box Lead Termination</b> | None                                                        |
| <b>Base Indicator</b>                 | Rigid                                                       |
| <b>Bearing Grease Type</b>            | Polyrex EM (-20F +300F)                                     |
| <b>Blower</b>                         | None                                                        |
| <b>Current @ Voltage</b>              | 3.200 A @ 230.0 V<br>3.200 A @ 208.0 V<br>1.600 A @ 460.0 V |
| <b>Design Code</b>                    | B                                                           |
| <b>Drip Cover</b>                     | No Drip Cover                                               |
| <b>Duty Rating</b>                    | CONT                                                        |
| <b>Efficiency @ 100% Load</b>         | 85.5 %                                                      |
| <b>Electrically Isolated Bearing</b>  | Not Electrically Isolated                                   |
| <b>Feedback Device</b>                | NO FEEDBACK                                                 |
| <b>Front Shaft Indicator</b>          | None                                                        |

**Part Detail**

|                     |            |
|---------------------|------------|
| <b>Revision</b>     | G          |
| <b>Type</b>         | AC         |
| <b>Mech. spec.</b>  | 35X075     |
| <b>Base</b>         |            |
| <b>Status</b>       | PRD/A      |
| <b>Elec. spec.</b>  | 35WGG004   |
| <b>Layout</b>       | 35LYX075   |
| <b>Eff. date</b>    | 01-05-2026 |
| <b>CD Diagram</b>   | CD0005     |
| <b>Poles</b>        | 04         |
| <b>Leads</b>        | 9#18 Y     |
| <b>Proprietary</b>  | False      |
| <b>Created date</b> | 01-10-2022 |

|                                      |                     |
|--------------------------------------|---------------------|
| <b>Heater Indicator</b>              | No Heater           |
| <b>High Voltage Full Load Amps</b>   | 1.6 a               |
| <b>Insulation Class</b>              | F                   |
| <b>Inverter Code</b>                 | Inverter Ready      |
| <b>KVA Code</b>                      | N                   |
| <b>Lifting Lugs</b>                  | No Lifting Lugs     |
| <b>Locked Bearing Indicator</b>      | No Locked Bearing   |
| <b>Motor Lead Quantity/Wire Size</b> | 9 @ 18 AWG          |
| <b>Motor Lead Termination</b>        | Flying Leads        |
| <b>Motor Standards</b>               | NEMA                |
| <b>Motor Type</b>                    | 3520M               |
| <b>Mounting Arrangement</b>          | F1                  |
| <b>Number of Poles</b>               | 4                   |
| <b>Overall Length</b>                | 17.86 IN            |
| <b>Power Factor</b>                  | 69                  |
| <b>Product Family</b>                | General Purpose     |
| <b>Pulley End Bearing Type</b>       | Ball                |
| <b>Pulley Face Code</b>              | Standard            |
| <b>Pulley Shaft Indicator</b>        | Standard            |
| <b>Rodent Screen</b>                 | None                |
| <b>Service Factor</b>                | 1.15                |
| <b>Shaft Diameter</b>                | 0.875 IN            |
| <b>Shaft Ground Indicator</b>        | No Shaft Grounding  |
| <b>Shaft Rotation</b>                | Reversible          |
| <b>Shaft Slinger Indicator</b>       | No Slinger          |
| <b>Speed</b>                         | 1770 rpm            |
| <b>Speed Code</b>                    | Single Speed        |
| <b>Starting Method</b>               | Direct on line      |
| <b>Thermal Device - Bearing</b>      | None                |
| <b>Thermal Device - Winding</b>      | None                |
| <b>Vibration Sensor Indicator</b>    | No Vibration Sensor |
| <b>Winding Thermal 1</b>             | None                |
| <b>Winding Thermal 2</b>             | None                |

**Nameplate**

| <b>NP1259L</b>      |              |             |      |            |   |           |   |  |  |
|---------------------|--------------|-------------|------|------------|---|-----------|---|--|--|
| <b>CAT.NO.</b>      | EBM3546T     |             |      |            |   |           |   |  |  |
| <b>SPEC.</b>        | 35X075G004G1 |             |      |            |   |           |   |  |  |
| <b>HP</b>           | 1            |             |      |            |   |           |   |  |  |
| <b>VOLTS</b>        | 230/460      |             |      |            |   |           |   |  |  |
| <b>AMP</b>          | 3.2/1.6      |             |      |            |   |           |   |  |  |
| <b>RPM</b>          | 1770         |             |      |            |   |           |   |  |  |
| <b>FRAME</b>        | 143T         | <b>HZ</b>   | 60   |            |   | <b>PH</b> | 3 |  |  |
| <b>SER.F.</b>       | 1.15         | <b>CODE</b> | N    | <b>DES</b> | B | <b>CL</b> | F |  |  |
| <b>NEMA-NOM-EFF</b> | 85.5         | <b>PF</b>   | 69   |            |   |           |   |  |  |
| <b>RATING</b>       | 40C AMB-CONT |             |      |            |   |           |   |  |  |
| <b>CC</b>           | 010A         |             |      |            |   |           |   |  |  |
| <b>DE</b>           | 6205         | <b>ODE</b>  | 6203 |            |   |           |   |  |  |
| <b>ENCL</b>         | TEFC         | <b>SN</b>   |      |            |   |           |   |  |  |
|                     | SFA 3.4/1.7  |             |      |            |   |           |   |  |  |

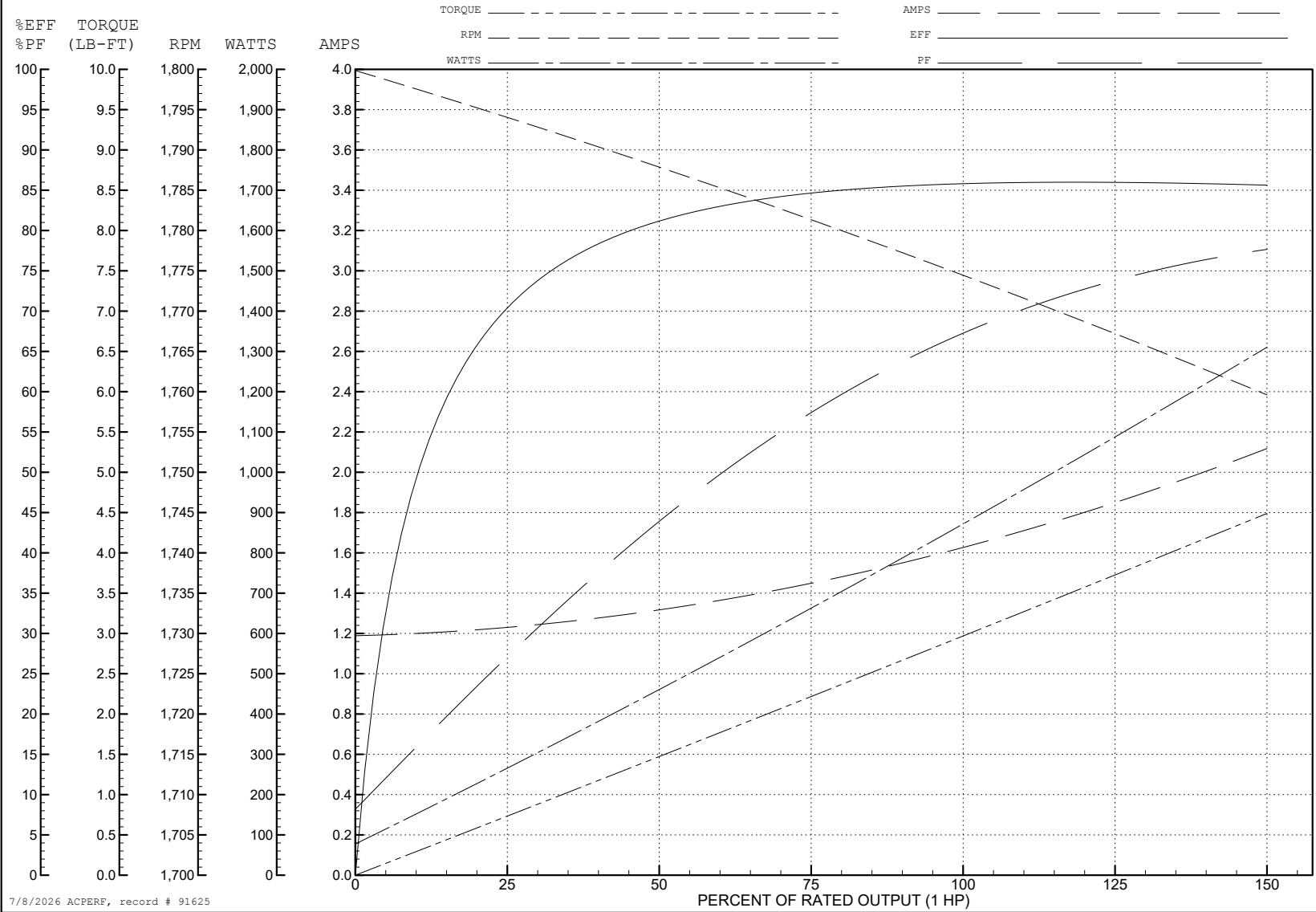
ABB Motors and Mechanical Inc.

WINDING # 35WGG004

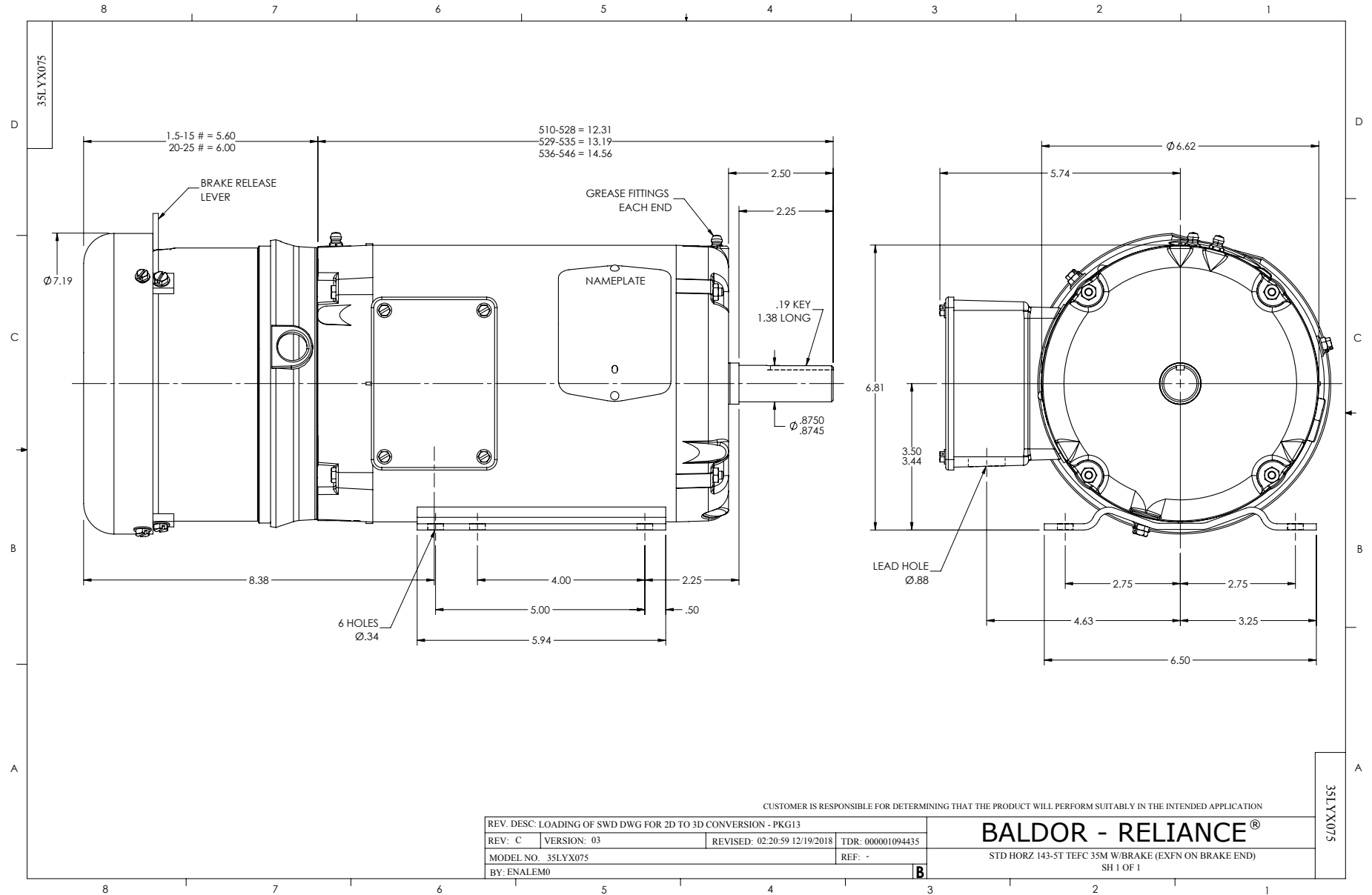
1 HP 3 PH 60 HZ 1770 RPM 460 V 3520M

Typical performance - not guaranteed values.

TORQUES (LB-FT): PO=14.6 PU=7.57 LR=9.17 LRA=14.6



7/8/2026 ACPERF, record # 91625



CD0005



LOW VOLTAGE  
(2Y)



LINE

HIGH VOLTAGE  
(1Y)



LINE

NOTES:

1. INTERCHANGE ANY TWO LINE LEADS TO REVERSE ROTATION.
2. OPTIONAL THERMOSTATS ARE PROVIDED WHEN SPECIFIED.
3. ACTUAL NUMBER OF INTERNAL PARALLEL CIRCUITS MAY BE A MULTIPLE OF THOSE SHOWN ABOVE.
4. LEAD COLORS ARE OPTIONAL. LEADS MUST ALWAYS BE NUMBERED AS SHOWN.

CD0005

REV. DESC: REVISE TO SHOW OPTIONAL COLORS

REV. LTR: E BY: JLP REVISED: 01/19/99 10:15 TDR: 0171435

500000

FILE: AAA00005140

MDL: -

MTL: -

**BALDOR ELECTRIC Co.**

3PH, DV, 9 LEADS