

DUTY MASTER ALTERNATING CURRENT MOTORS

SQUIRREL-CAGE INDUCTION

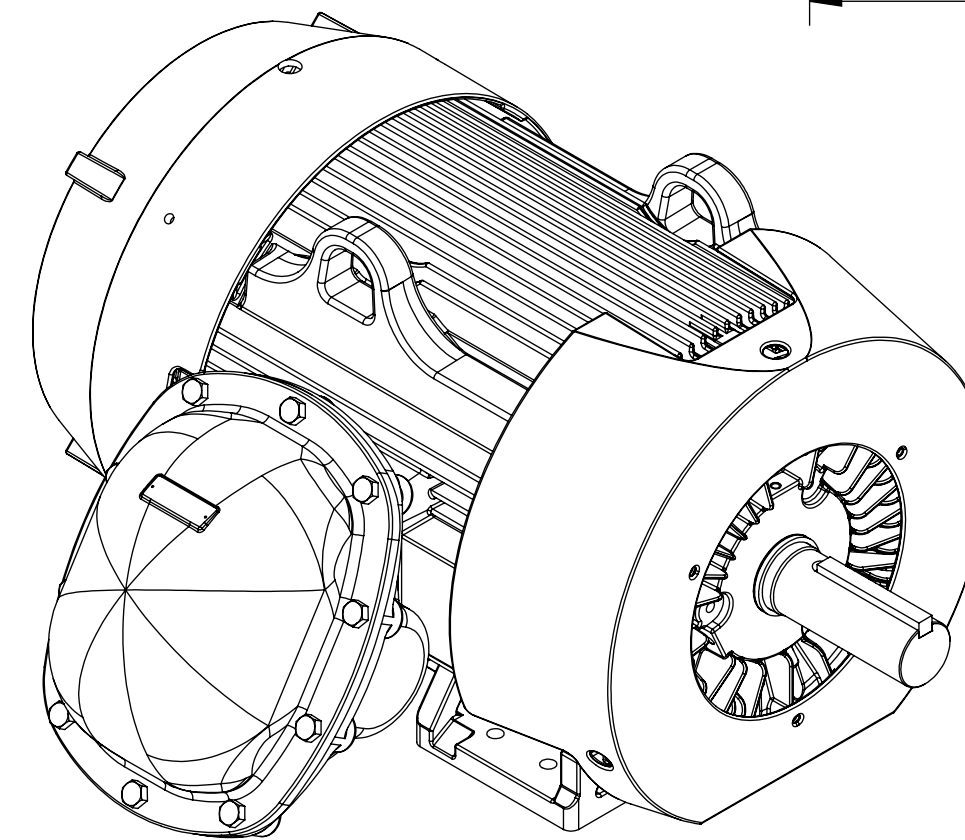
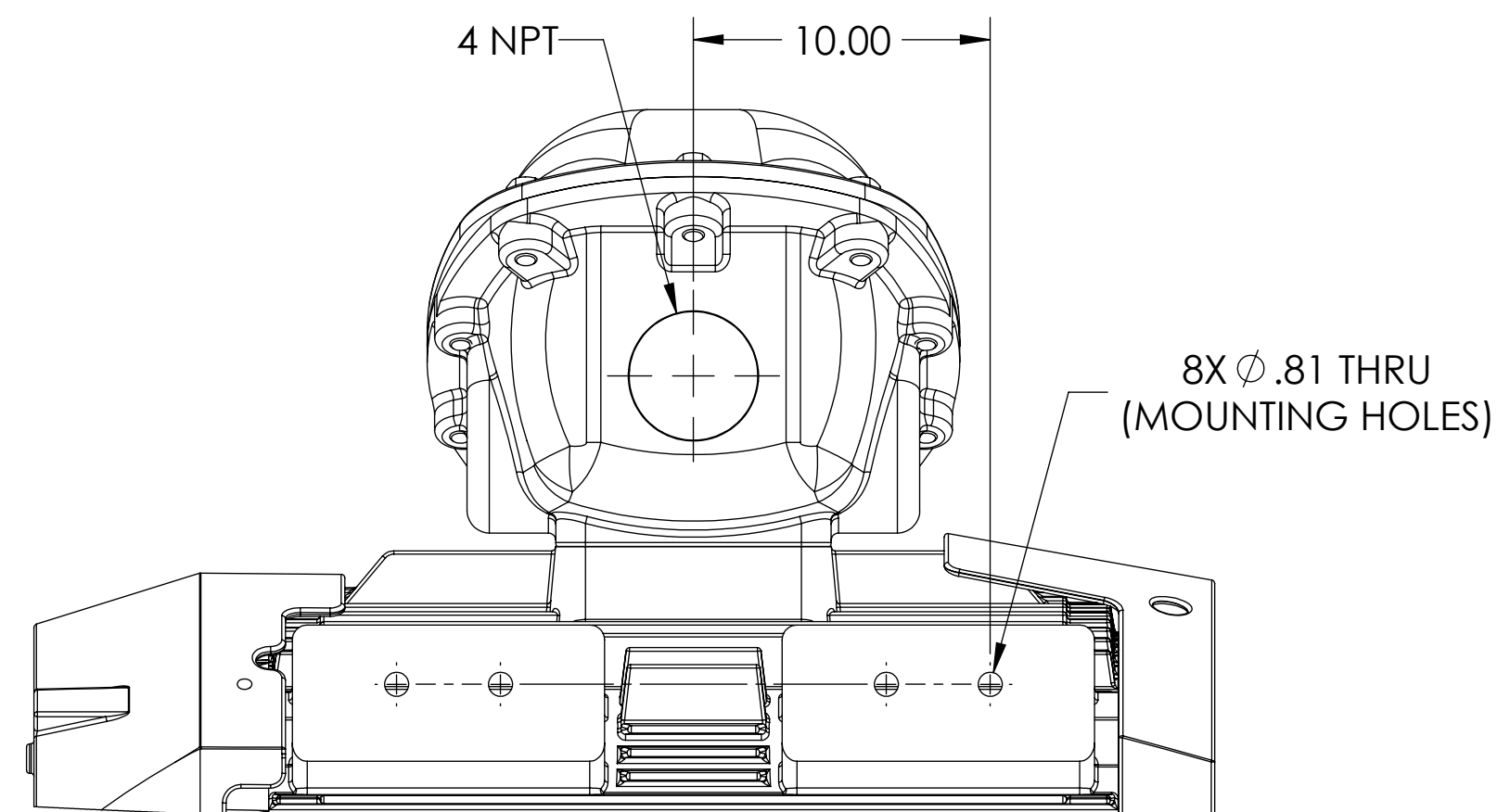
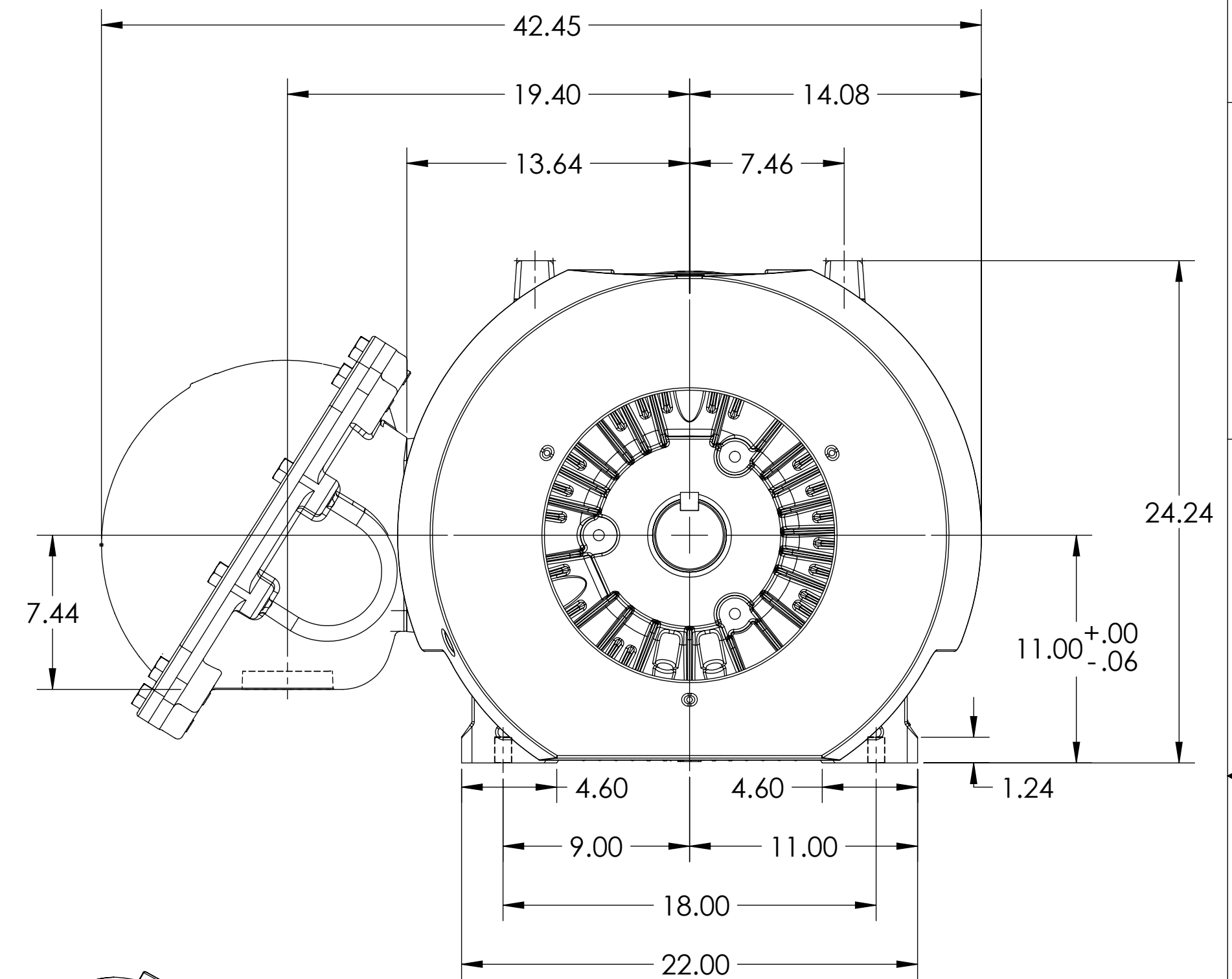
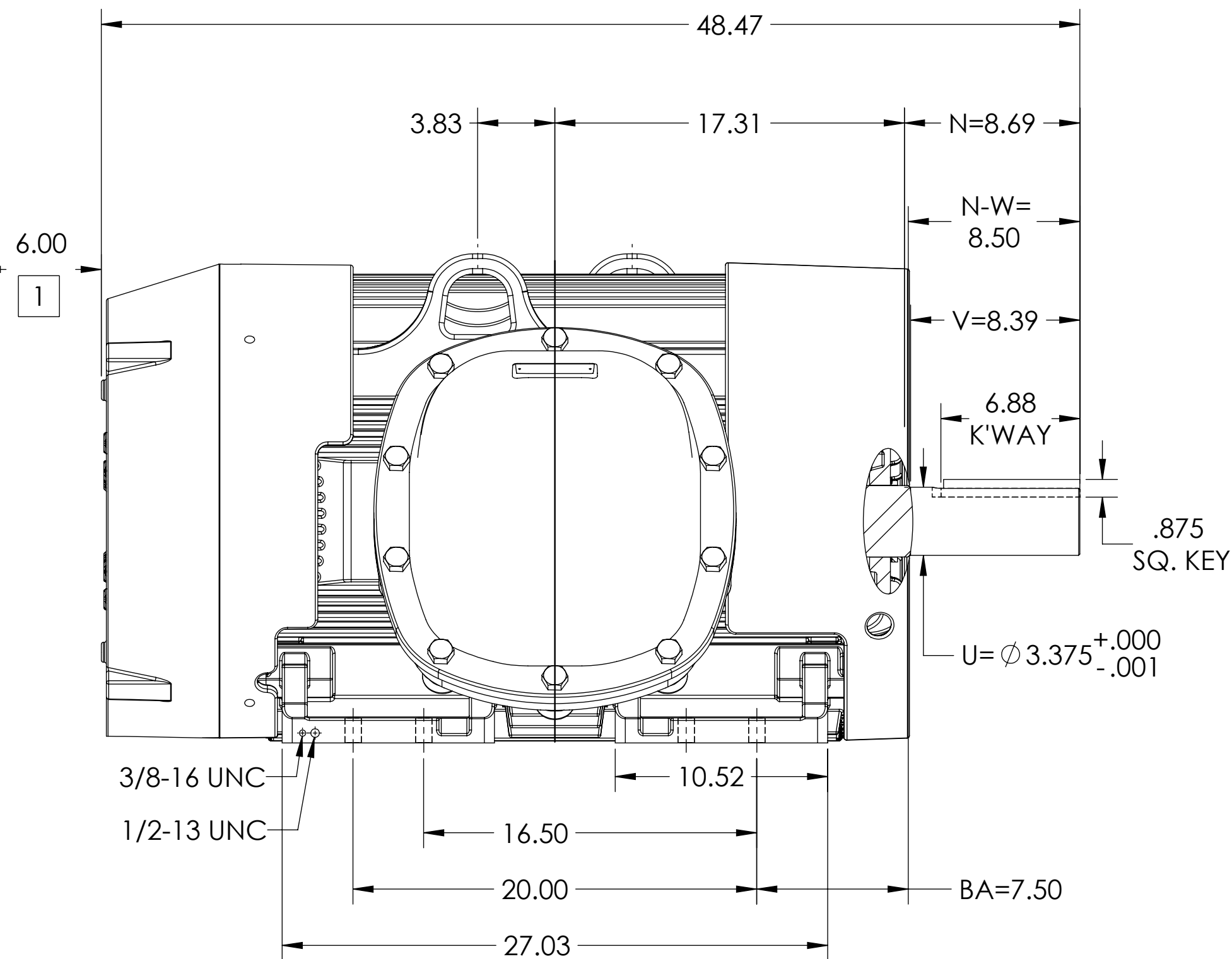
ENCLOSURE: UL LISTED MOTOR

MOUNTING: FOOT, F-1 SIDE

G447T/G445T FRAME MOUNTING HOLES

COOLING: FAN COOLED

GROUP C & D



DIMENSIONS ARE IN INCHES.
WEIGHT (LBS): 2610, MOTOR WEIGHTS MAY VARY BY 15% DEPENDING ON RATING.
CUSTOMER IS RESPONSIBLE FOR DETERMINING THAT MOTOR PERFORMANCE IS SUITABLE IN THE APPLICATION.

REV. DESC: NEW DRAWING			
REV: -	VERSION: 00	REVISED: 10:07:10 03/12/2019	TDR: 000001101613
MODEL NO. 617426-356			REF:
BY: USJEDIL		Material:	

BALDOR

G447/445T FCXP F1 FOOT CAST IRON CONDUIT BOX/GROUP C & D

617426-356

1 OBSTRUCTION MUST NO ENCROACH ON AIR INLET.

IF MOUNTING CLEARANCE DETAILS ARE REQUIRED, CONSULT FACTORY.
MAX PERMISSIBLE SHAFT RUNOUT WHEN MEASURED AT END OF STANDARD SHAFT EXTENSION IS .003" T.I.R.