

DUTY MASTER ALTERNATING CURRENT MOTORS
SQUIRREL-CAGE INDUCTION

611742-772

ENCLOSURE: TOTALLY ENCLOSED

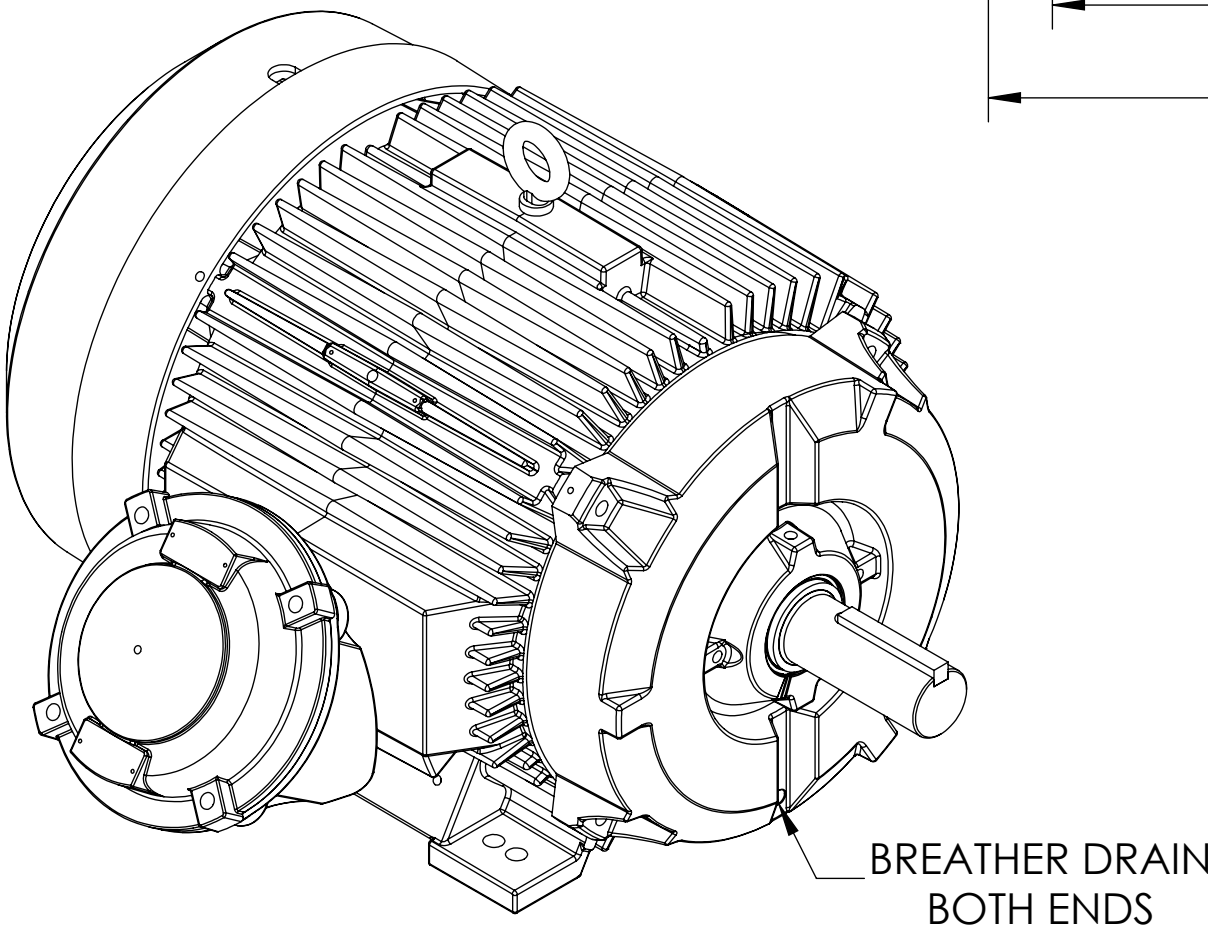
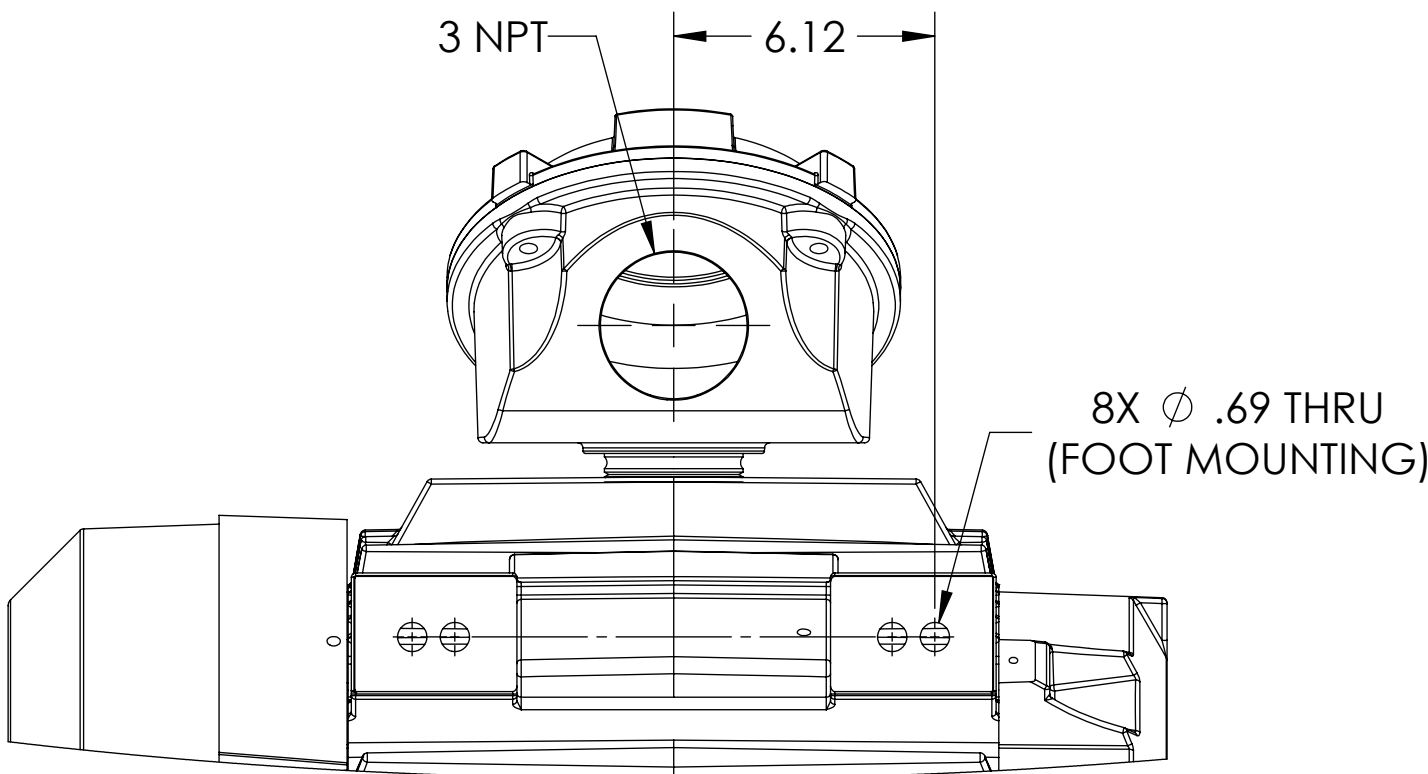
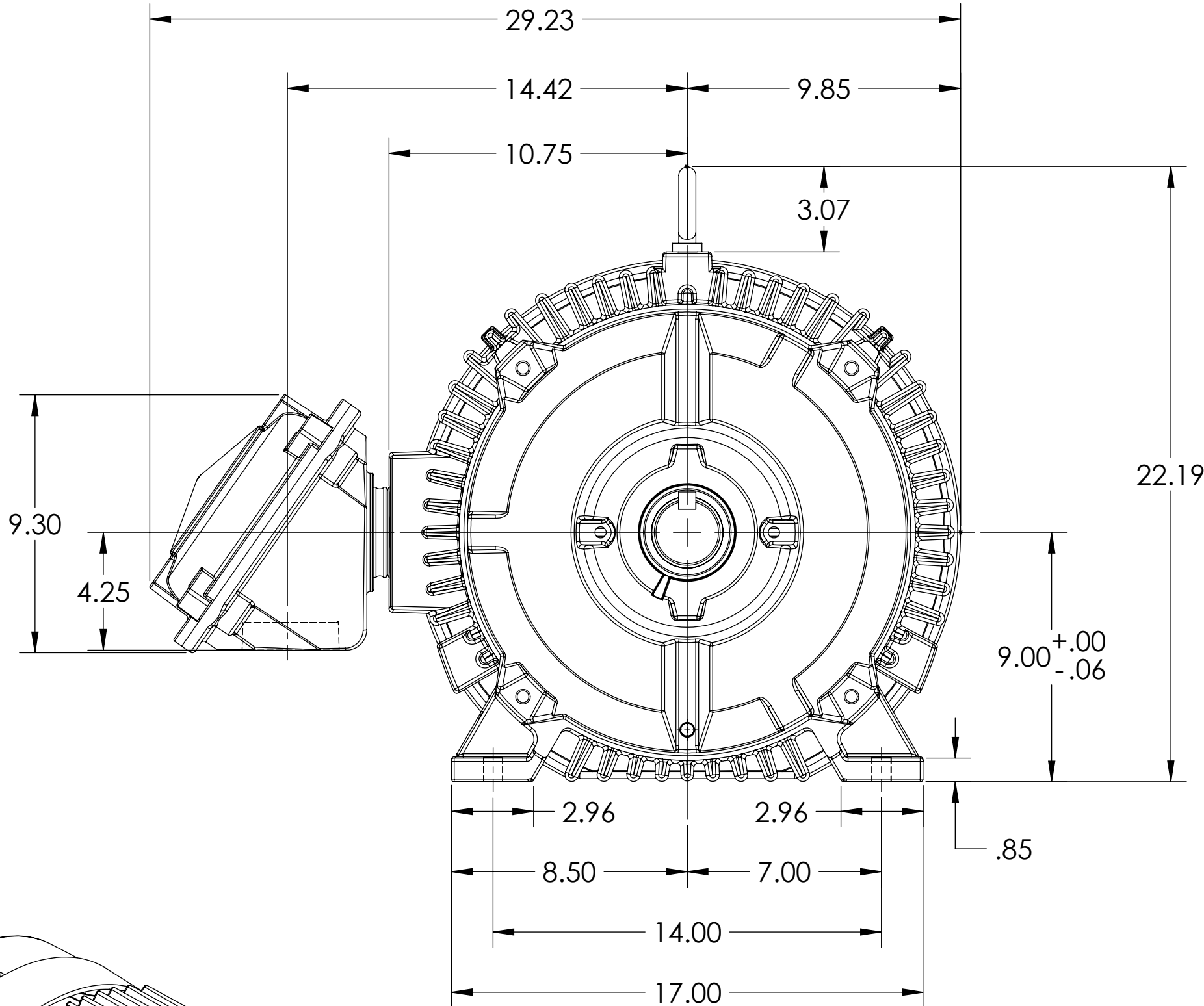
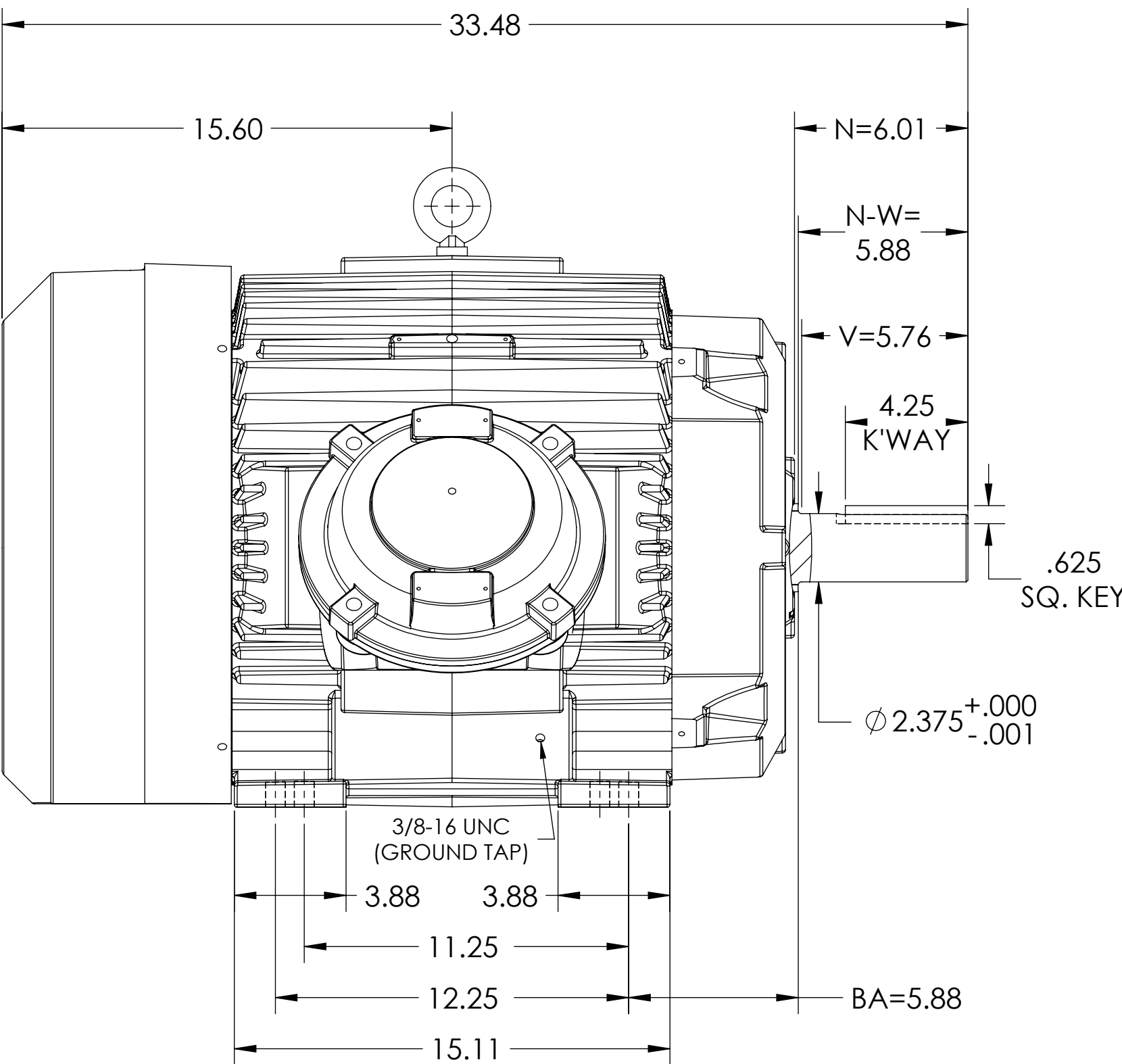
COOLING: FAN COOLED

MOUNTING: FOOT, F-1

E365T/E364T FRAME MOUNTING HOLES

UNDERWRITER MOTOR

DIV.1/CL.1/GRP. C & D



DIMENSIONS ARE IN INCHES.
CUSTOMER IS RESPONSIBLE FOR DETERMINING THAT MOTOR PERFORMANCE IS SUITABLE IN THE APPLICATION.

SHEET NUMBER
1 OF 1

IF MOUNTING CLEARANCE DETAILS ARE REQUIRED, CONSULT FACTORY.
MAX PERMISSIBLE SHAFT RUNOUT WHEN MEASURED AT END OF STANDARD SHAFT EXTENSION IS .003" T.I.R.

REV. DESC: NEW DRAWING			
REV: -	VERSION: 00	REVISED: 03:41:44 10/24/2018	TDR: 000001088043
MODEL NO. 611742-772			
BY: USJEDIL			

BALDOR

E365/364T FCXP F1 FOOT CAST IRON BOX/CL.1/GRP C & D/DRAINS

611742-772