

DUTY MASTER ALTERNATING CURRENT MOTORS
SQUIRREL-CAGE INDUCTION

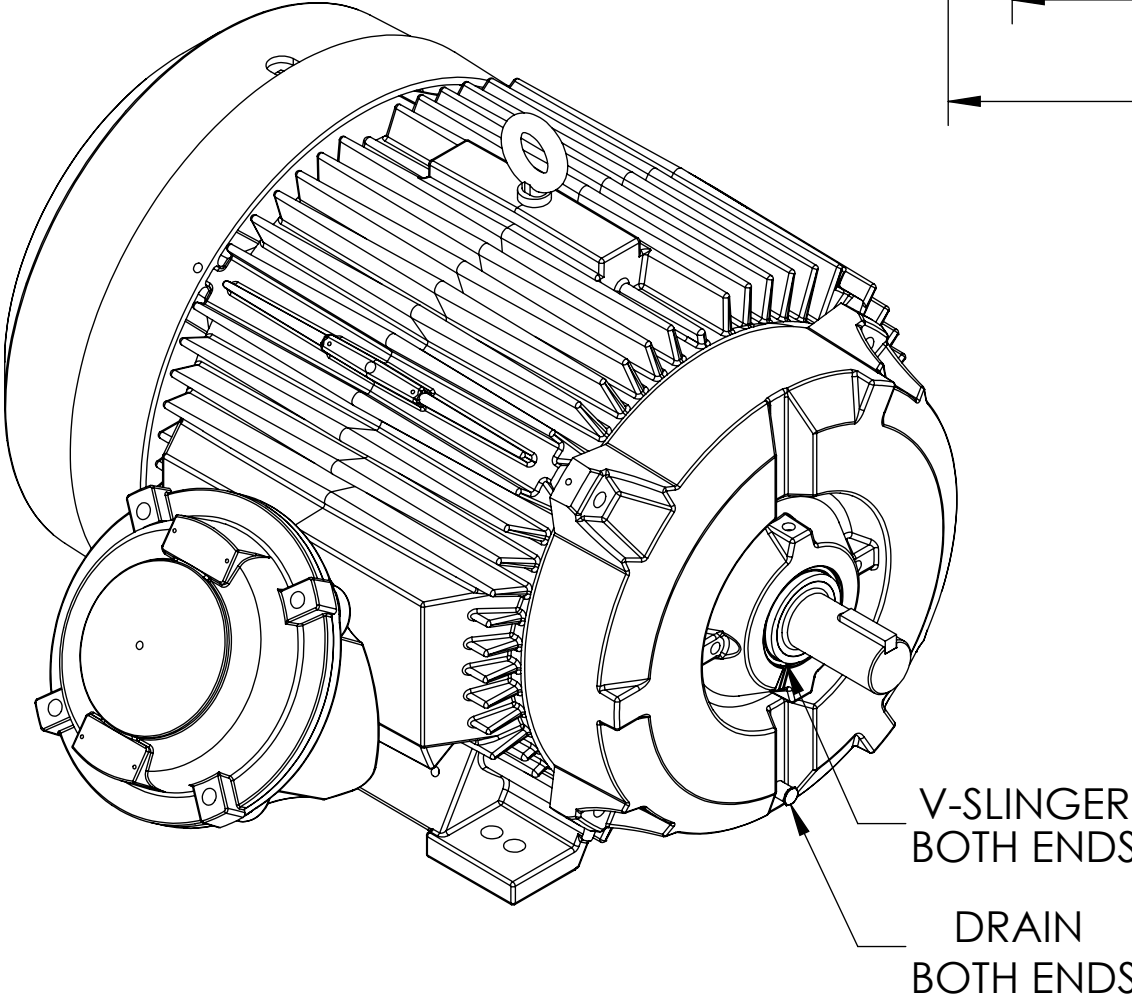
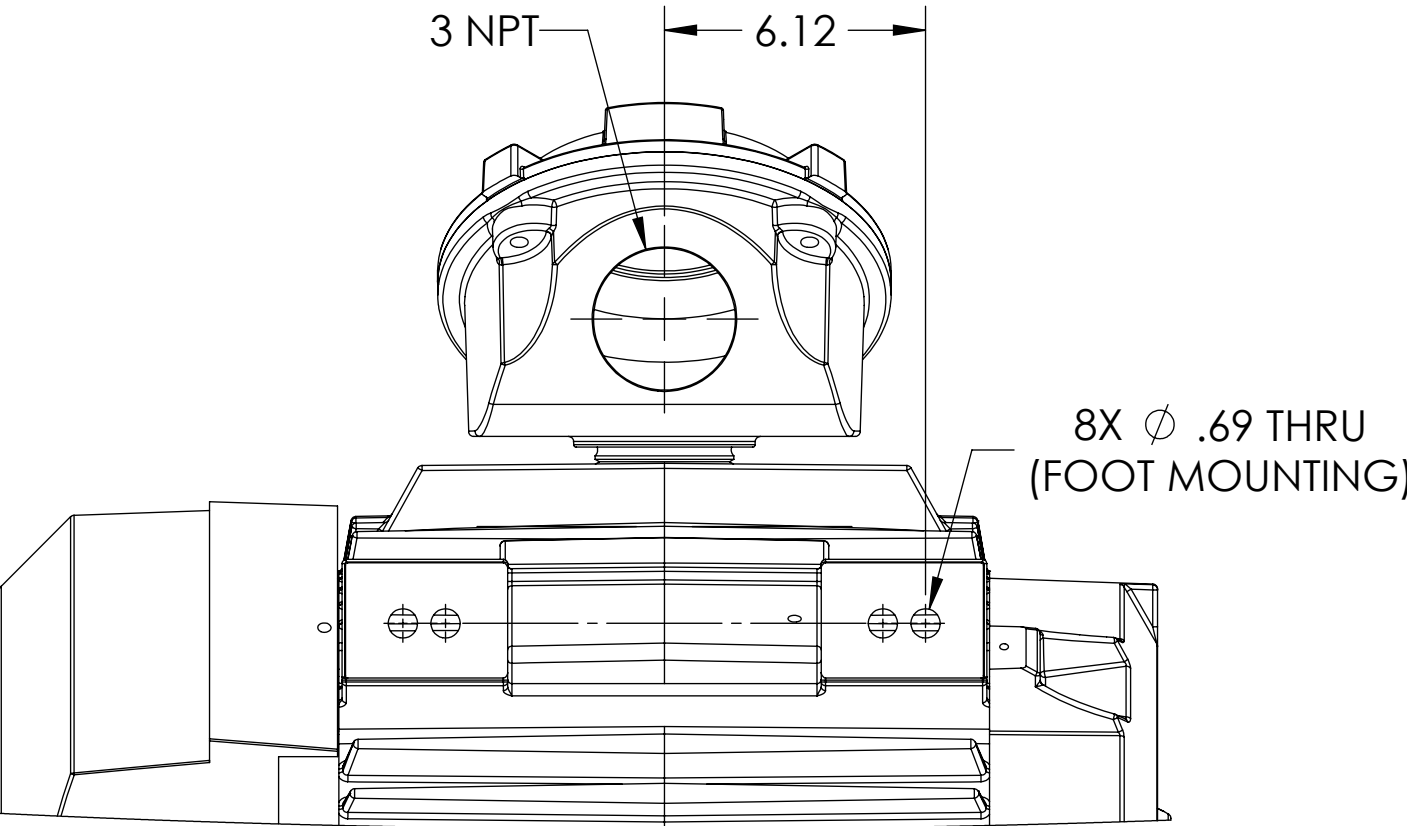
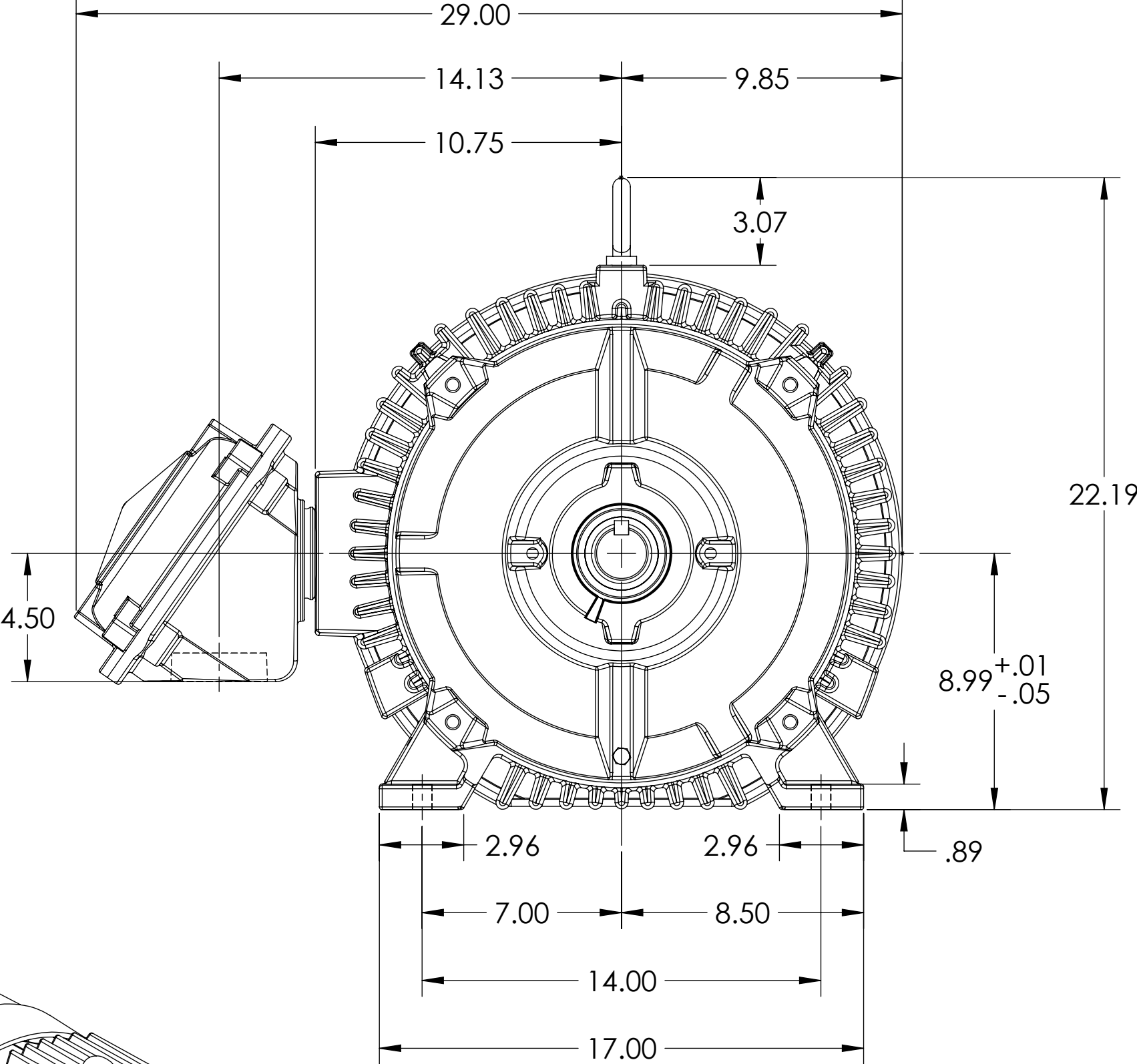
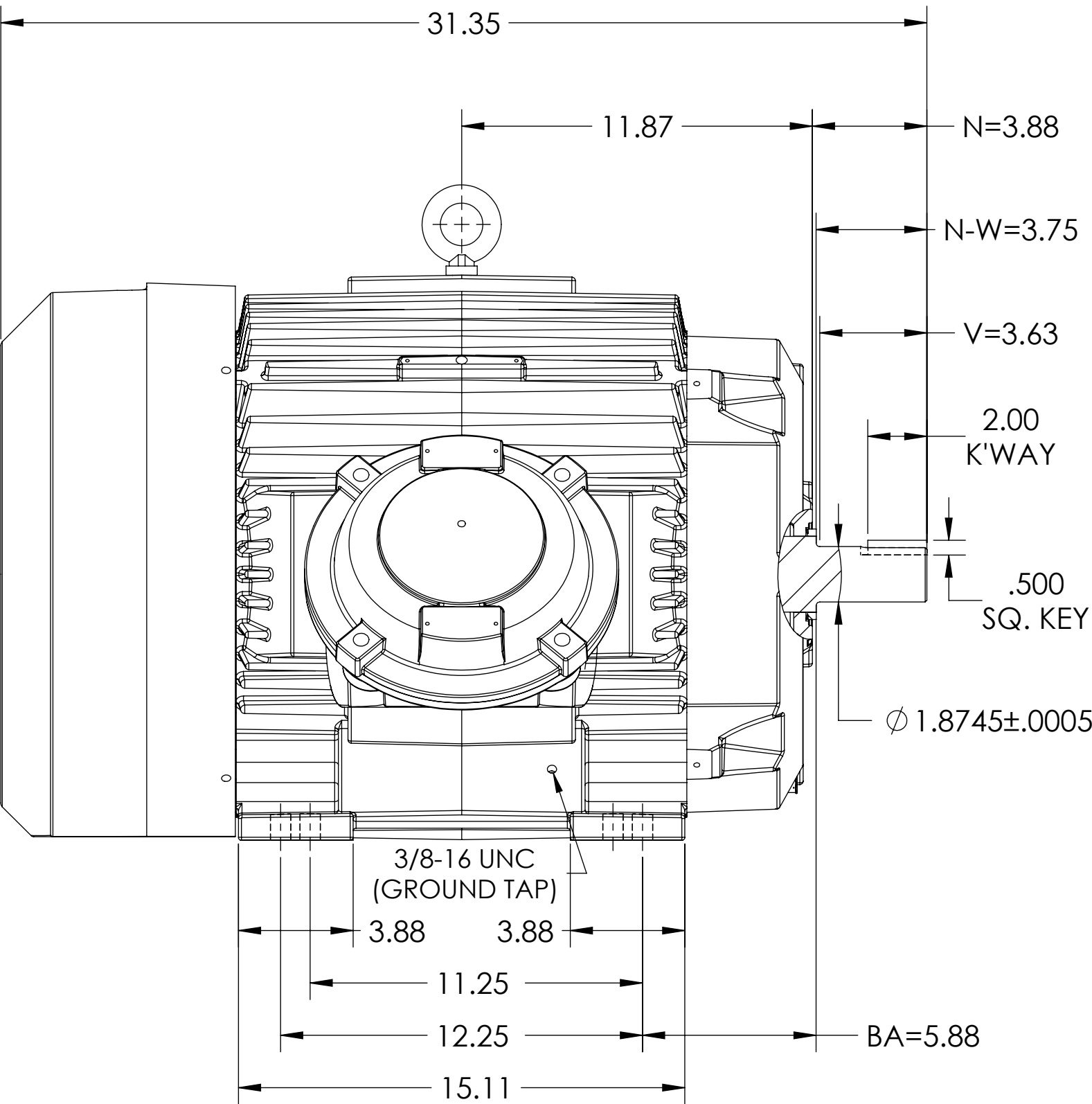
611742-779

ENCLOSURE: TOTALLY ENCLOSED

MOUNTING: FOOT, F-1

E365TS/E364TS FRAME MOUNTING HOLES

COOLING: FAN COOLED



DIMENSIONS ARE IN INCHES.
CUSTOMER IS RESPONSIBLE FOR DETERMINING THAT MOTOR PERFORMANCE IS SUITABLE IN THE APPLICATION.

REV. DESC: NEW DRAWING			
REV: -	VERSION: 00	REVISED: 01:54:43 04/30/2019	TDR: 000001107162
MODEL NO. 611742-779			
BY: USJEDIL			

BALDOR

E365/364TS FCXP F1 FOOT/CI CONDUIT BOX/GROUND TAP/DRAINS

SHEET NUMBER
1 OF 1

MOTOR WEIGHT (LBS) = 944, MAY VARY BY 15% DEPENDING RATING.
IF MOUNTING CLEARANCE DETAILS ARE REQUIRED, CONSULT FACTORY.
MAX PERMISSIBLE SHAFT RUNOUT WHEN MEASURED AT END OF STANDARD SHAFT EXTENSION IS .003" T.I.R.

611742-779