

ABB BALDOR RELIANCE III

Customer information packet

DRX36464T

40HP, 1190RPM, 3PH, 60HZ, 364T, TEFC, F1

Class - CLI GP C,D

Division - Division I

Specifications

Enclosure	TEFC
Frame	364T
Frame Material	Iron
Frequency	60.00 Hz
Haz Area Class and Group	CLI GP C,D
Haz Area Division	Division I
Motor Letter Type	Three Phase
Output @ Frequency	40.000 HP @ 60 HZ
Phase	3
Synchronous Speed @ Frequency	1200 RPM @ 60 HZ
Voltage @ Frequency	230.0 V @ 60 HZ 460.0 V @ 60 HZ
Agency Approvals	CCSAUSEEV CSA UL
Ambient Temperature	40 °C
Auxiliary Box	NO AUXILLARY BOX
Base Indicator	Rigid
Bearing Grease Type	Polyrex EM (-20F +300F)
Constant Torque Speed Range	6-60
Current @ Voltage	49.800 A @ 460.0 V 99.600 A @ 230.0 V
Design Code	B
Drip Cover	No Drip Cover
Duty Rating	CONT
Efficiency @ 100% Load	94.1 %
Feedback Device	NO FEEDBACK
Haz Area Temp Code	T3C
Heater Indicator	No Heater
High Voltage Full Load Amps	49.8 a
Insulation Class	F
Inverter Code	Inverter Ready

Part Detail

Revision	-
Type	AC
Mech. spec.	
Base	
Status	PRD/A
Elec. spec.	A36WG1194
Layout	611742-772
Eff. date	05-29-2019
CD Diagram	416820-002
Poles	06
Leads	3#4,6#6
Proprietary	False
Created date	05-01-2019

IP Rating	NONE
KVA Code	G
Lifting Lugs	Standard Lifting Lugs
Max Speed	2700 rpm
Motor Lead Quantity/Wire Size	3 @ 4 AWG
Motor Standards	NEMA
Motor Type	A36062M
Mounting Arrangement	F1
Number of Poles	6
Overall Length	33.48 IN
Power Factor	80
Product Family	General Industrial
Pulley End Bearing Type	Ball
Pulley Face Code	Standard
Service Factor	1.00
Shaft Diameter	2.374 IN
Shaft Ground Indicator	No Shaft Grounding
Shaft Rotation	Reversible
Shaft Slinger Indicator	Shaft Slinger
Speed	1190 rpm
Speed Code	Single Speed
Starting Method	Direct on line
Thermal Device - Bearing	None
Thermal Device - Winding	Normally Closed Thermostat

Nameplate

NP2496L
MOBIL POLYREX EM

000692000FX

000613006PC

CLASS I GROUP	C D X	NO.	
CLASS II GROUP	X X X		
OPERATING TEMP CODE	T3C		

NP3140L

SPEC NO.	A36-7817-1194		CAT.NO.	DRX36464T			FRAME	364T		
HP	40	VOLTS	230/460		PHASE	3	DESIGN	B	TYPE	P
RPM	1190	AMPS	99.6/49.8		HZ	60	AMB	40	SF	1.00
DRIVE END BEARING	65BC03J30X		DUTY	CONT		INSUL.CLASS	F			
OPP D.E. BEARING	65BC03J30X		ENCL	TEFC		CODE	G			
SF	1.15	WK2	20.223	MAG CUR	37/18.5		RPM MAX	2700		
CT HZ	6-60	VT HZ	0-60	CHP HZ	60-90		NEMA-NOM-EFF	94.1		
	SUIT FOR 55C AMB AT 1.00 SF					IP55				
SER.NO.				MOTOR WEIGHT	908					

CUSTOMER INFORMATION PACKET		DRX36464T - 40HP, 1190RPM, 3PH, 60HZ, 364T, TEFC, F1				
FRAME	HP	TYPE	PHASE/ HERTZ	RPM	VOLTS	
364T	40	P	3/60	1190	230/460	

AMPS	DUTY	AMB °C/ INSUL	S.F.	NEMA DESIGN	CODE LETTER	ENCLOSURE
99.6/49.8	CONT	40/F	1.00	B	G	TEFC

E/S	ROTOR	TEST S.O.	TEST DATE	STATOR RES. @25 °C OHMS (BETWEEN LINES)	
491378	418141088JE	---	---	.0373/.149	

PERFORMANCE


LOAD	HP	AMPERES	RPM	% POWER FACTOR	% EFFICIENCY
NO LOAD	0	18.5	1200	5.70	0
1/4	10.0	22.4	1197	47.0	89.2
2/4	20.0	29.6	1194	67.8	93.2
3/4	30.0	39.1	1191	76.3	94.1
4/4	40.0	49.8	1188	79.9	94.1
5/4	50.0	61.2	1184	81.6	93.7

SPEED TORQUE

	RPM	TORQUE % FULL LOAD	TORQUE LB.-FT.	AMPERES
LOCKED ROTOR	0	165	291	300
PULL UP	480	142	251	274
BREAKDOWN	1134	251	444	172
FULL LOAD	1188	100	177	49.8

AMPERES SHOWN FOR 460 VOLT CONNECTION. IF OTHER CONNECTIONS ARE AVAILABLE, THE AMPERES WILL VARY INVERSELY WITH THE RATED VOLTAGE.

TYPICAL DATA
 XE MOTOR-NEMA NOM. EFF. 94.1 %
 GUARANTEED MIN. EFF. 93.0%

	DRAWN BY: <u>T.G. KELATI</u>	AC MOTOR PERFORMANCE DATA	A36WG1194-R015
	CHECKED BY: <u>D. H. MAY</u>		
	APPROVED BY: <u>E.J. CHRISTIAN</u>		
	DATE: <u>10/12/06</u>		

FRAME 364T

VOLTS 230/460

NEMA DESIGN B

TEST S.O. TYPICAL DATA

HP 40

AMPS 99.6/49.8

CODE LETTER G

TEST DATE ---

TYPE P

DUTY CONT

ENCLOSURE TEFC

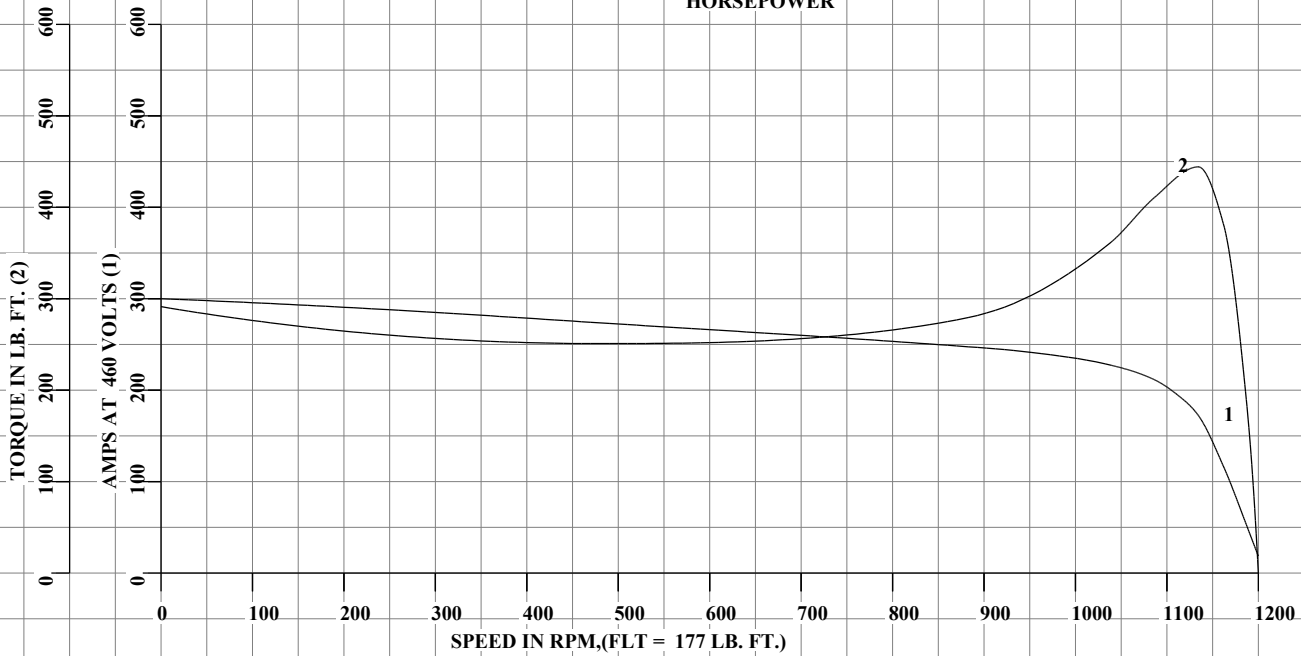
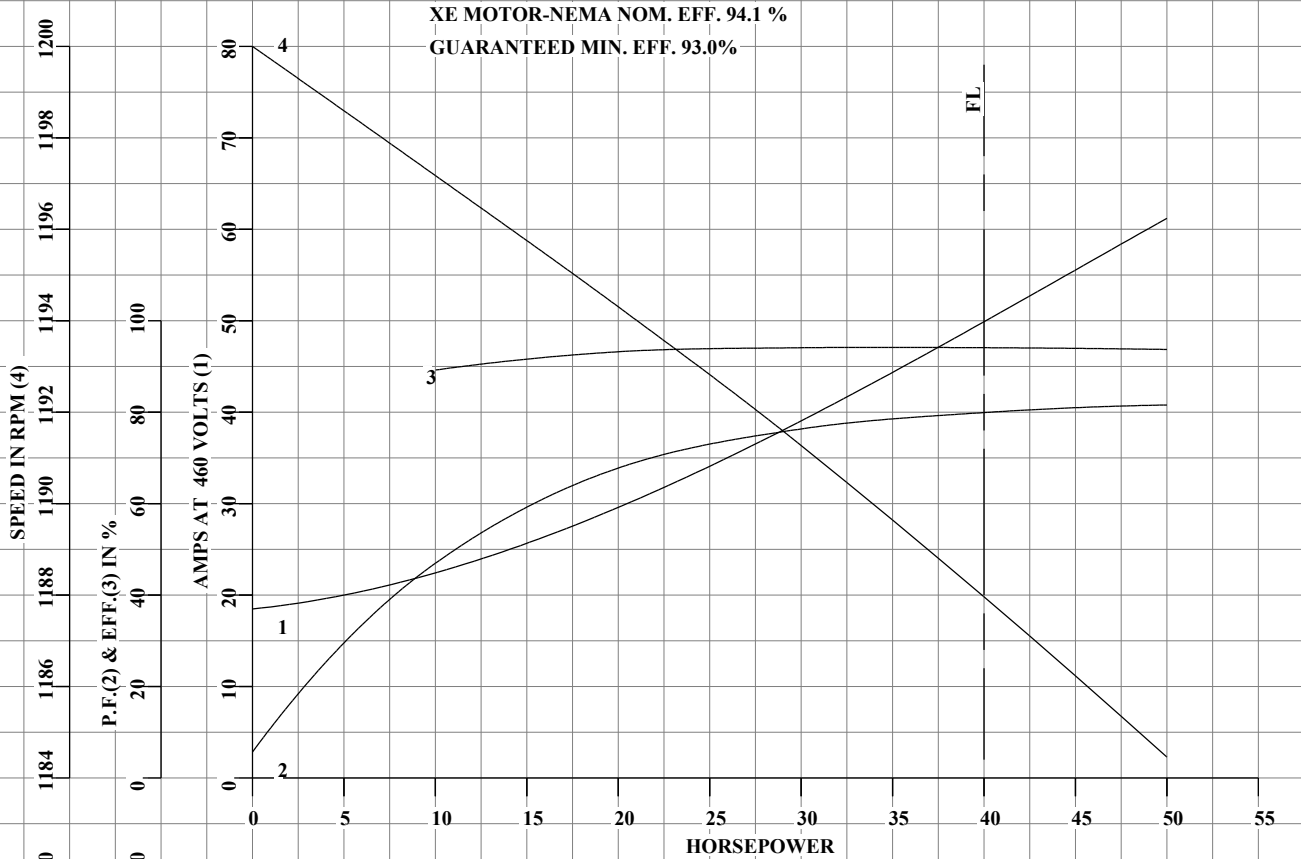
STATOR RES. @ 25°C .0373/.149

PHASE / HERTZ 3/60

AMB °C / INSUL 40/F

E/S 491378

OHMS (BETWEEN LINES)



AMPERES SHOWN FOR 230/460 VOLT CONNECTION, IF OTHER VOLTAGE CONNECTIONS ARE AVAILABLE, THE AMPERES WILL VARY INVERSELY WITH THE RATED VOLTAGE.



DRAWN BY: T.G. KELATI
 CHECKED BY: D. H. MAY
 APPROVED BY: E.J. CHRISTIAN
 DATE: 10/12/06

AC MOTOR
PERFORMANCE
DATA

A36WG1194-R015

ISSUE DATE 01/24/25

FRAME 364T

VOLTS 230/460

NEMA DESIGN B

TEST S.O. TYPICAL DATA

HP 40

AMPS 99.6/49.8

CODE LETTER G

TEST DATE ---

TYPE P

DUTY CONT

ENCLOSURE TEFC

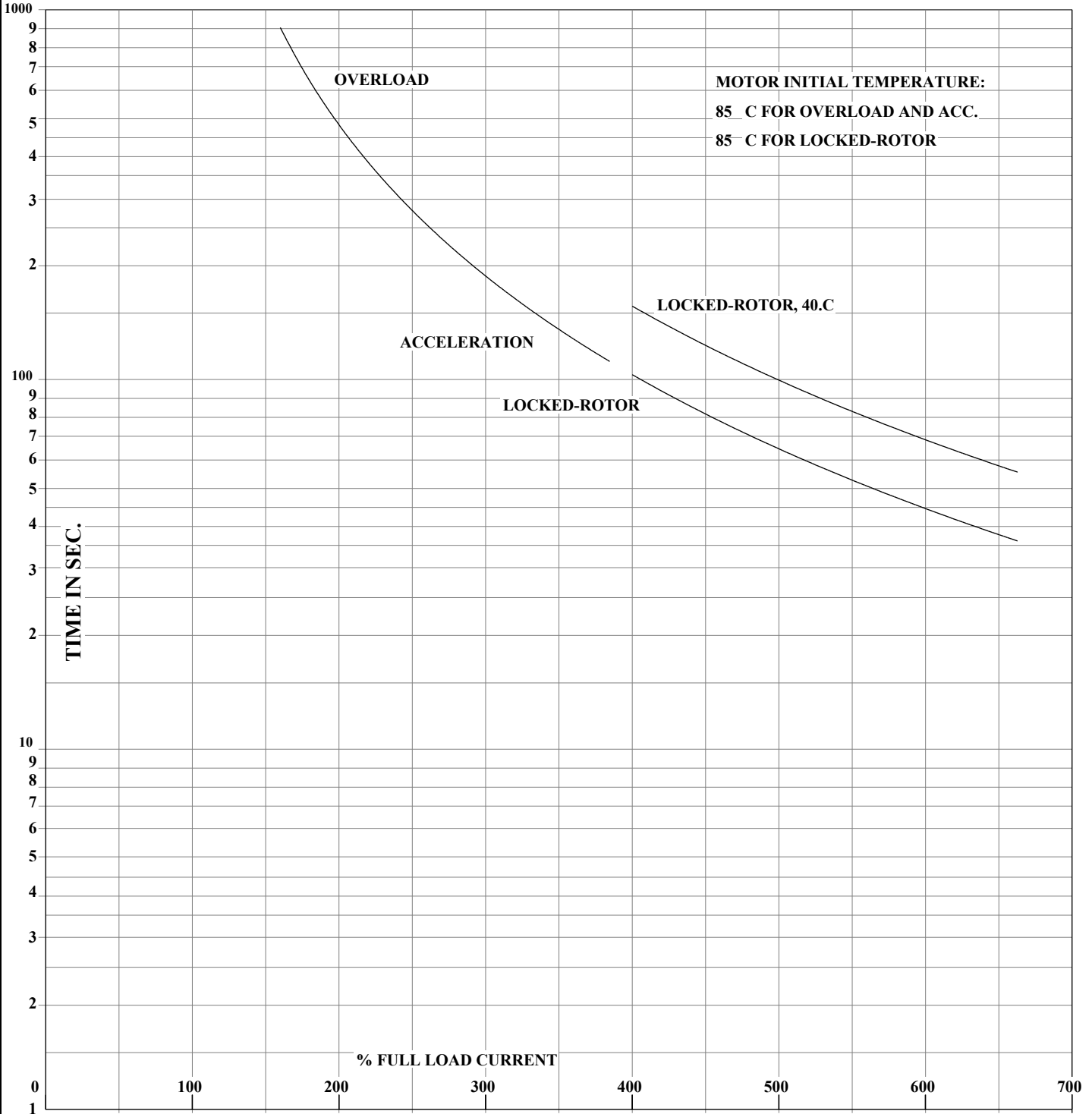
STATOR RES. @ 25°C .0373/.149

PHASE / HERTZ 3/60

AMB °C / INSUL 40/F

E/S 491378

OHMS (BETWEEN LINES)



THERMAL LIMIT CURVE
 XE MOTOR-NEMA NOM. EFF. 94.1 %

AMPERES SHOWN FOR 230/460 VOLT CONNECTION, IF OTHER VOLTAGE CONNECTIONS ARE AVAILABLE, THE AMPERES WILL VARY INVERSELY WITH THE RATED VOLTAGE.

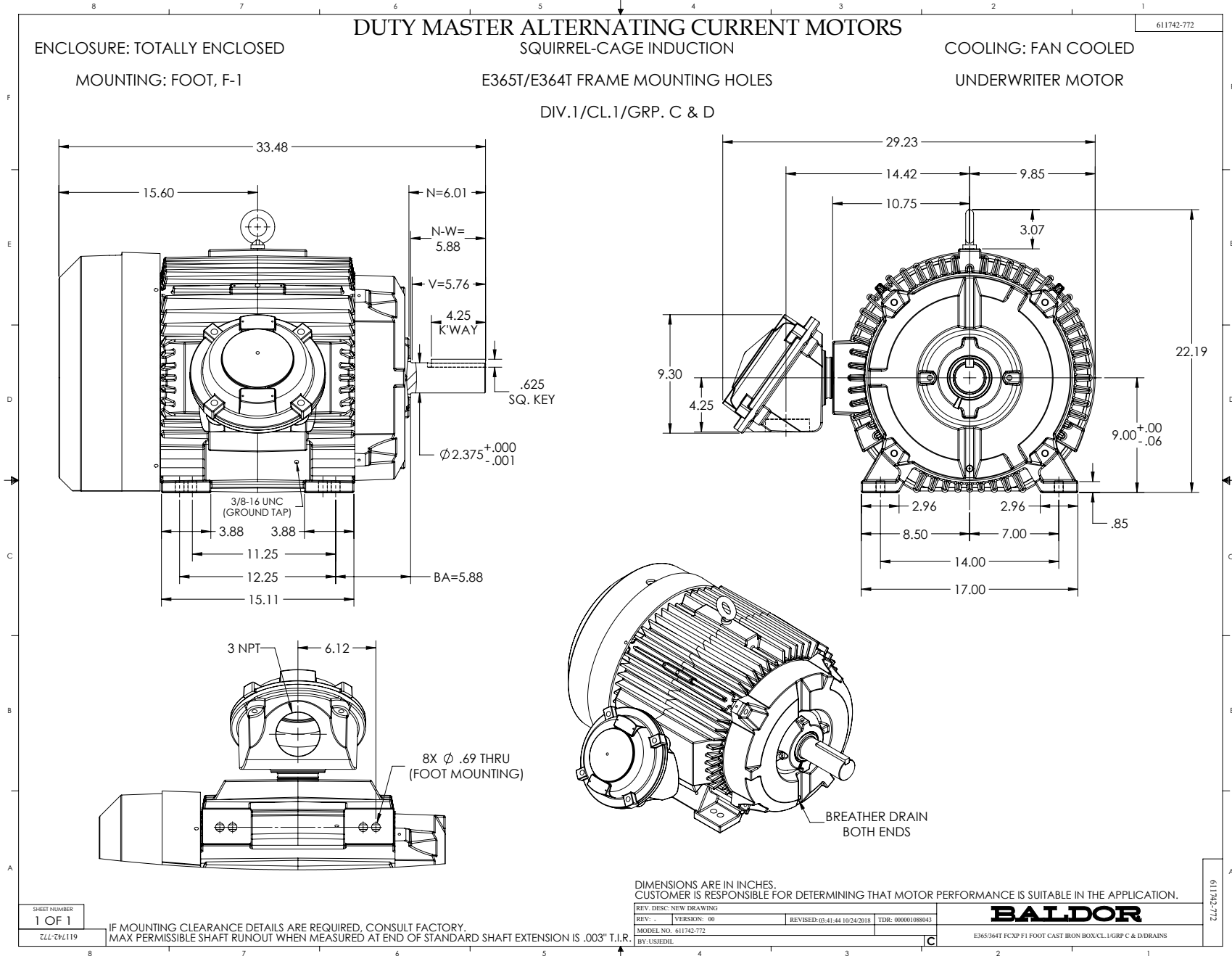


DRAWN BY: T.G. KELATI
 CHECKED BY: D. H. MAY
 APPROVED BY: E.J. CHRISTIAN
 DATE: 10/12/06

AC MOTOR
 PERFORMANCE
 DATA

A36WG1194-R015

ISSUE DATE 01/24/25



CONNECTION DIAGRAM ACCESSORIES

MOTOR WINDING THERMOSTATS	
CONTACTS _____ @ _____ °C	
FIGURE NUMBER _____	
CONTACT RATING	
VOLTS	CONTINUOUS AMPERES
110-120	3.0
220-240	1.5
440-480	0.75
550-600	0.60
	INRUSH AMPERES
	30
	15
	7.5
	6.0

NORMALLY CLOSED	THERMOSTATS	NORMALLY OPEN
 FIGURE 1		 FIGURE 4
 FIGURE 2		 FIGURE 5
 FIGURE 3		 FIGURE 6
 FIGURE 7		 FIGURE 8

CUSTOMER _____ CUSTOMER ORDER NO. _____ S.O. NO. _____

418174-006

418174-006

REV. DESC: LOADED TO BUS		
REV. LTR: A	VERSION: 01	TDR: 000000570390
FILE: \RAG\00013\849	REVISED: 10:16:21 12/07/2010	BY: RAGDRF
MTL: -		

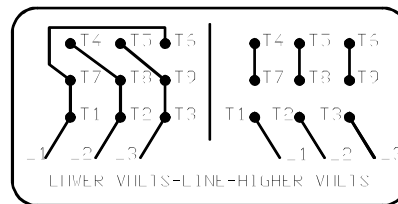
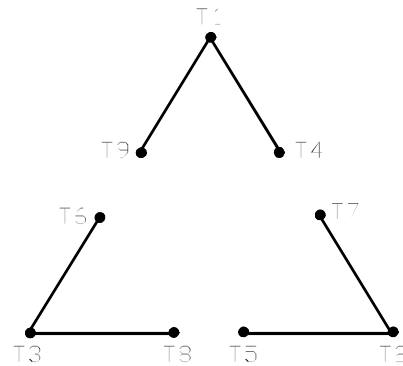
BALDOR

A-C MOTOR CONNECTION ACCESSORIES

SH 1 of 1

416820-002

A-C MOTOR
CONNECTION DIAGRAM
STANDARD 9 LEAD DELTA-CONNECTED



(N.P. 1575-B)

416820-002

REV. DESC: FONT CHANGE FOR PDF SEARCHABLE		
REV. LTR: A	VERSION: 01	TDR: 000001009382
FILE: \MGA\00000\661	REVISED: 02:46:19 02/13/2020	BY: MGHMTT
MTL: -		© □

BALDOR - RELIANCE®

CONN DIAG - STANDARD 9 LEAD, DELTA-CONNECTED

SH 1 of 1