

**BALDOR • RELIANCE**

---

# Customer information packet

## DRX32364T

30HP, 1180//980RPM, 3PH, 60HZ, 326T, XPFC, F1

Class - CLI GP C,D

Division - Division I

## Specifications

|                                |  |
|--------------------------------|--|
| Enclosure                      | XPFC   |
| Frame                          | 326T   |
| Frame Material                 | Iron   |
| Frequency                      | 50.00 Hz<br>60.00 Hz   |
| Haz Area Class and Group       | CLI GP C,D   |
| Haz Area Division              | Division I   |
| Motor Letter Type              | Three Phase  |
| Output @ Frequency             | 25.000 HP @ 50 HZ<br>30.000 HP @ 60 HZ                                   |
| Phase                          | 3  |
| Synchronous Speed @ Frequency  | 1200 RPM @ 50 HZ   |
| Voltage @ Frequency            | 460.0 V @ 60 HZ<br>380.0 V @ 50 HZ<br>230.0 V @ 60 HZ<br>190.0 V @ 50 HZ |
| Agency Approvals               | CSA EEV<br>UL  |
| Ambient Temperature            | 40 °C  |
| Auxillary Box                  | No Auxillary Box   |
| Auxillary Box Lead Termination | None   |
| Base Indicator                 | Rigid  |
| Bearing Grease Type            | Polyrex EM (-20F +300F)  |
| Blower                         | None   |
| Constant Torque Speed Range    | 6  |
| Current @ Voltage              | 78.000 A @ 230.0 V<br>39.000 A @ 460.0 V                                 |
| Design Code                    | A  |
| Drip Cover                     | No Drip Cover  |
| Duty Rating                    | CONT   |
| Efficiency @ 100% Load         | 93.0 %   |
| Electrically Isolated Bearing  | Not Electrically Isolated  |

## Part detail

|              |              |
|--------------|--------------|
| Revision     | F            |
| Type         | AC           |
| Mech. spec.  |              |
| Base         |              |
| Status       | PRD/A        |
| Elec. spec.  | 12WGY812     |
| Layout       | 12LY-000-234 |
| Eff. date    | 06-08-2023   |
| CD Diagram   | CD0005       |
| Poles        | 06           |
| Leads        | 9#8          |
| Proprietary  | False        |
| Created date | 05-30-2019   |

|                             |                            |
|-----------------------------|----------------------------|
| Feedback Device             | NO FEEDBACK                |
| Haz Area Temp Code          | T3C                        |
| Heater Indicator            | No Heater                  |
| High Voltage Full Load Amps | 39.0 a                     |
| Insulation Class            | F                          |
| Inverter Code               | Inverter Duty              |
| IP Rating                   | NONE                       |
| KVA Code                    | H                          |
| Lifting Lugs                | Standard Lifting Lugs      |
| Locked Bearing Indicator    | Locked Bearing             |
| Max Speed                   | 1800 rpm                   |
| Motor Lead Termination      | Flying Leads               |
| Motor Standards             | NEMA                       |
| Motor Type                  | 1264M                      |
| Mounting Arrangement        | F1                         |
| Number of Poles             | 6                          |
| Overall Length              | 32.00 IN                   |
| Power Factor                | 78                         |
| Product Family              | Hazardous Location Motor   |
| Pulley Face Code            | Standard                   |
| Rodent Screen               | None                       |
| RoHS Status                 | ROHS NON-COMPLIANT         |
| Service Factor              | 1.00                       |
| Shaft Diameter              | 2.125 IN                   |
| Shaft Ground Indicator      | No Shaft Grounding         |
| Shaft Rotation              | Reversible                 |
| Speed                       | 1180 rpm                   |
| Speed Code                  | Single Speed               |
| Starting Method             | Direct on line             |
| Thermal Device - Bearing    | None                       |
| Thermal Device - Winding    | Normally Closed Thermostat |
| Vibration Sensor Indicator  | No Vibration Sensor        |
| Winding Thermal 1           | None                       |
| Winding Thermal 2           | None                       |

**Nameplate**

| NP1401XPSLEV   |                            |                  |                   |              |                 |                            |      |  |  |  |
|----------------|----------------------------|------------------|-------------------|--------------|-----------------|----------------------------|------|--|--|--|
| <b>NO.</b>     |                            | <b>CC</b>        | 010A              |              |                 |                            |      |  |  |  |
| <b>S/N</b>     |                            | <b>TEMP CODE</b> | T3C               |              |                 |                            |      |  |  |  |
| <b>SPEC.</b>   | 12-0000-0681               |                  | <b>INV.TYPE</b>   | PWM          |                 |                            |      |  |  |  |
| <b>CAT.NO.</b> | DRX32364T                  |                  | <b>C HP FR</b>    | 60           | <b>C HP TO</b>  | 90                         |      |  |  |  |
| <b>HP</b>      | 30//25                     |                  | <b>CT HZ FROM</b> | 6            | <b>CT HZ TO</b> | 60                         |      |  |  |  |
| <b>VOLTS</b>   | 230/460//190/380           |                  | <b>VT HZ FROM</b> | 6            | <b>VT HZ TO</b> | 60                         |      |  |  |  |
| <b>AMPS</b>    | 78/39                      |                  | <b>MAG CUR</b>    | 34.4/17.2    |                 |                            |      |  |  |  |
| <b>RPM</b>     | 1180//980                  |                  | <b>MX RPM</b>     | 1800         |                 |                            |      |  |  |  |
| <b>HZ</b>      | 60//50                     | <b>PH</b>        | 3                 | <b>CL</b>    | F               | <b>NOM.EFF.</b>            | 93   |  |  |  |
| <b>SER.F.</b>  | 1.00                       | <b>DES</b>       | A                 | <b>SL HZ</b> | 1               | <b>WK2</b>                 | 12.2 |  |  |  |
| <b>FRAME</b>   | 326T                       | <b>RATING</b>    | 40C AMB-CONT      |              |                 |                            |      |  |  |  |
|                | 55C AMB @ 1.0 SF, 60C RISE |                  |                   |              |                 |                            |      |  |  |  |
|                | 1.15SF ON SINEWAVE         |                  |                   |              |                 | <b>NEMA MG-1 PT.5,IP55</b> |      |  |  |  |

**AC Induction Motor Performance Data**

Record # 67041

Typical performance - not guaranteed values

| <b>Winding:</b> 12WGY812-R015 |              | <b>Type:</b> 1264M         |  | <b>Enclosure:</b> XPFC       |           |
|-------------------------------|--------------|----------------------------|--|------------------------------|-----------|
| <b>Nameplate Data</b>         |              |                            | <b>460 V, 60 Hz:<br/>High Voltage Connection</b> |                              |           |
| <b>Rated Output (HP)</b>      | 30           | <b>Full Load Torque</b>    | 133 LB-FT  |                              |           |
| <b>Volts</b>                  | 230/460      | <b>Start Configuration</b> | direct on line                                   |                              |           |
| <b>Full Load Amps</b>         | 78/39        | <b>Breakdown Torque</b>    | 370 LB-FT  |                              |           |
| <b>R.P.M.</b>                 | 1180         | <b>Pull-up Torque</b>      | 179 LB-FT  |                              |           |
| <b>Hz</b>                     | 60           | <b>Phase</b>               | 3  | <b>Locked-rotor Torque</b>   | 217 LB-FT |
| <b>NEMA Design Code</b>       | A            | <b>KVA Code</b>            | H  | <b>Starting Current</b>      | 245 A     |
| <b>Service Factor (S.F.)</b>  | 1            | <b>No-load Current</b>     | 17.2 A   |                              |           |
| <b>NEMA Nom. Eff.</b>         | 93           | <b>Power Factor</b>        | 78   | <b>Line-line Res. @ 25°C</b> | 0.22799 Ω |
| <b>Rating - Duty</b>          | 40C AMB-CONT |                            | <b>Temp. Rise @ Rated Load</b>                   | 56°C                         |           |
|                               |              |                            | <b>Locked-rotor Power Factor</b>                 | 27.6                         |           |

**Load Characteristics 460 V, 60 Hz, 30 HP**

| <b>% of Rated Load</b> | <b>25</b> | <b>50</b> | <b>75</b> | <b>100</b> | <b>125</b> | <b>150</b> |
|------------------------|-----------|-----------|-----------|------------|------------|------------|
| <b>Power Factor</b>    | 42        | 63        | 73        | 78         | 80         | 80         |
| <b>Efficiency</b>      | 89        | 92.7      | 93.4      | 93.1       | 92.4       | 91.4       |
| <b>Speed</b>           | 1196.5    | 1191.9    | 1188.3    | 1183.2     | 1178.2     | 1171.8     |
| <b>Line amperes</b>    | 19.2      | 24.1      | 31        | 38.7       | 47.5       | 57.3       |

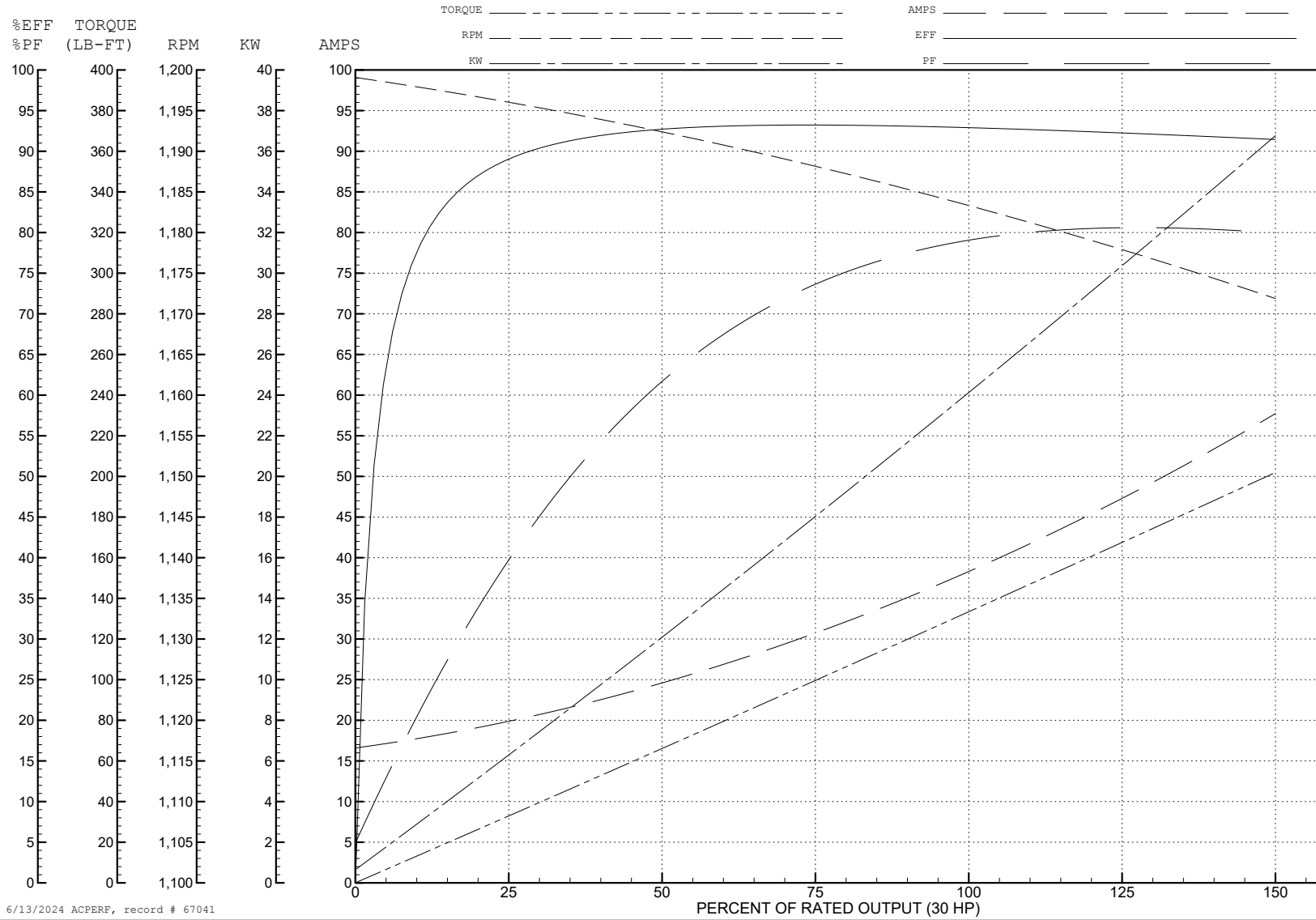
ABB Motors and Mechanical Inc.

WINDING # 12WGY812

30 HP 3 PH 60 HZ 1180 RPM 460 V 1264M

Typical performance - not guaranteed values.

TORQUES (LB-FT): PO=370 PU=179 LR=217 LRA=245



6/13/2024 ACPERF, record # 67041

**AC Induction Motor Performance Data**

Record # 75682

Typical performance - not guaranteed values

| Winding: 12WGY812-R018 |                  | Type: 1264M  | Enclosure: XPFC                                  |                     |                           |                         |
|------------------------|------------------|--------------|--|---------------------|---------------------------|-------------------------|
| <b>Nameplate Data</b>  |                  |              | <b>380 V, 50 Hz:<br/>High Voltage Connection</b> |                     |                           |                         |
| Rated Output (HP)      | 30//25           |              | Full Load Torque                                 | 133 LB-FT           |                           |                         |
| Volts                  | 230/460//190/380 |              | Start Configuration                              | direct on line      |                           |                         |
| Full Load Amps         | 78/39            |              | Breakdown Torque                                 | 358 LB-FT           |                           |                         |
| R.P.M.                 | 1180//980        |              | Pull-up Torque                                   | 187 LB-FT           |                           |                         |
| Hz                     | 60//50           | Phase        | 3  | Locked-rotor Torque | 227 LB-FT                 |                         |
| NEMA Design Code       | A                |              | KVA Code   | H                   | Starting Current          | 239 A                   |
| Service Factor (S.F.)  | 1                |              |  |                     | No-load Current           | 16.97 A                 |
| NEMA Nom. Eff.         | 93               | Power Factor | 78   |                     | Line-line Res. @ 25°C     | 0.222 Ω                 |
| Rating - Duty          | 40C              |              | AMB-CONT   |                     | Temp. Rise @ Rated Load   | 56°C                    |
| S.F. Amps              |                  |              |  |                     | Temp. Rise @ S.F. Load    | 69°C                    |
|                        |                  |              |  |                     | Locked-rotor Power Factor | 30.7                    |
|                        |                  |              |  |                     | Rotor inertia             | 12.2 LB-FT <sup>2</sup> |

**Load Characteristics 380 V, 50 Hz, 25 HP**

| % of Rated Load | 25    | 50    | 75    | 100   | 125   | 150   |
|-----------------|-------|-------|-------|-------|-------|-------|
| Power Factor    | 42    | 64    | 74    | 79    | 80    | 81    |
| Efficiency      | 89.3  | 92.6  | 93.1  | 92.3  | 91.9  | 90.6  |
| Speed           | 996   | 992   | 988   | 984   | 979   | 972   |
| Line amperes    | 18.98 | 23.98 | 31.07 | 38.94 | 48.02 | 58.14 |

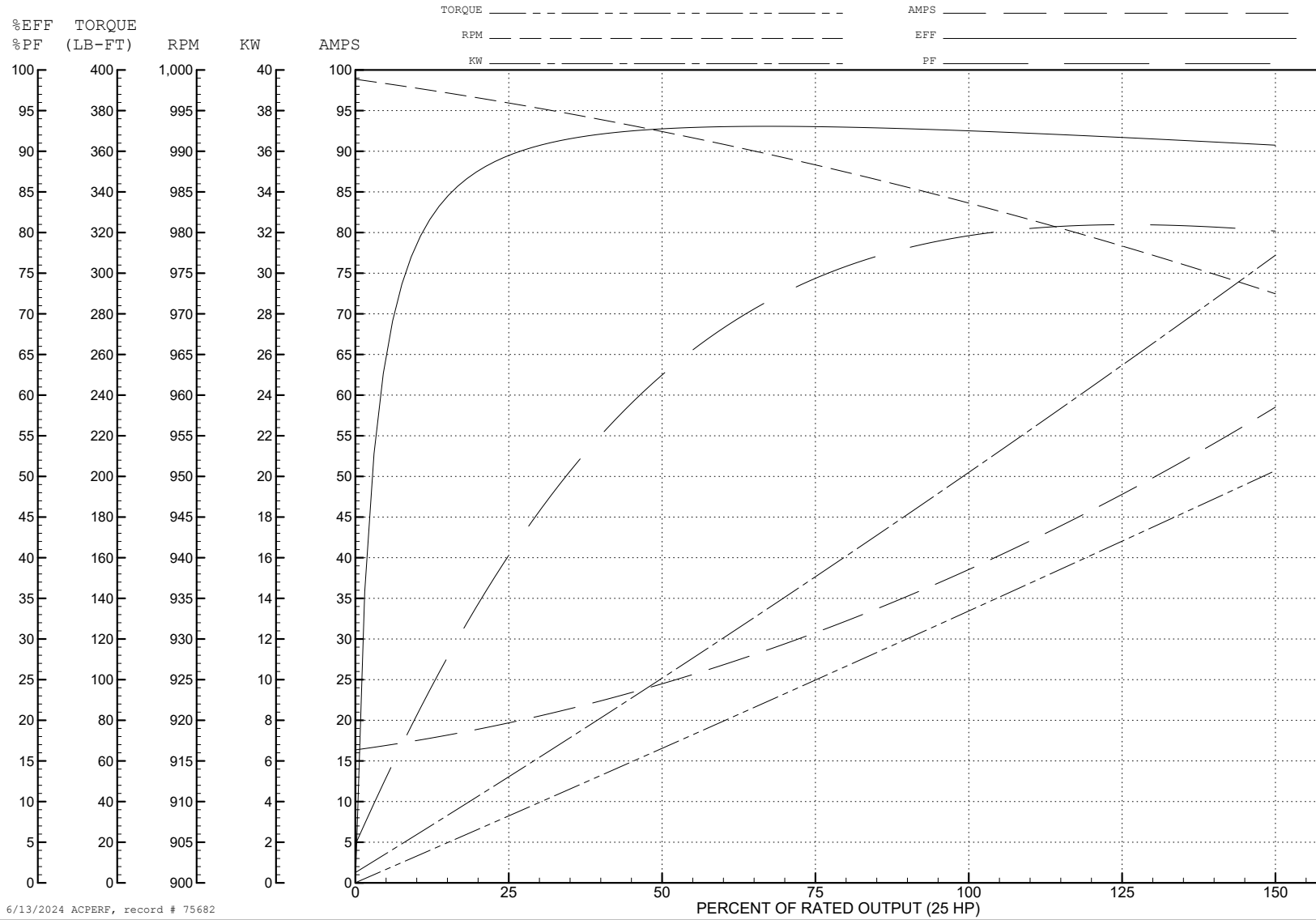
ABB Motors and Mechanical Inc.

WINDING # 12WGY812

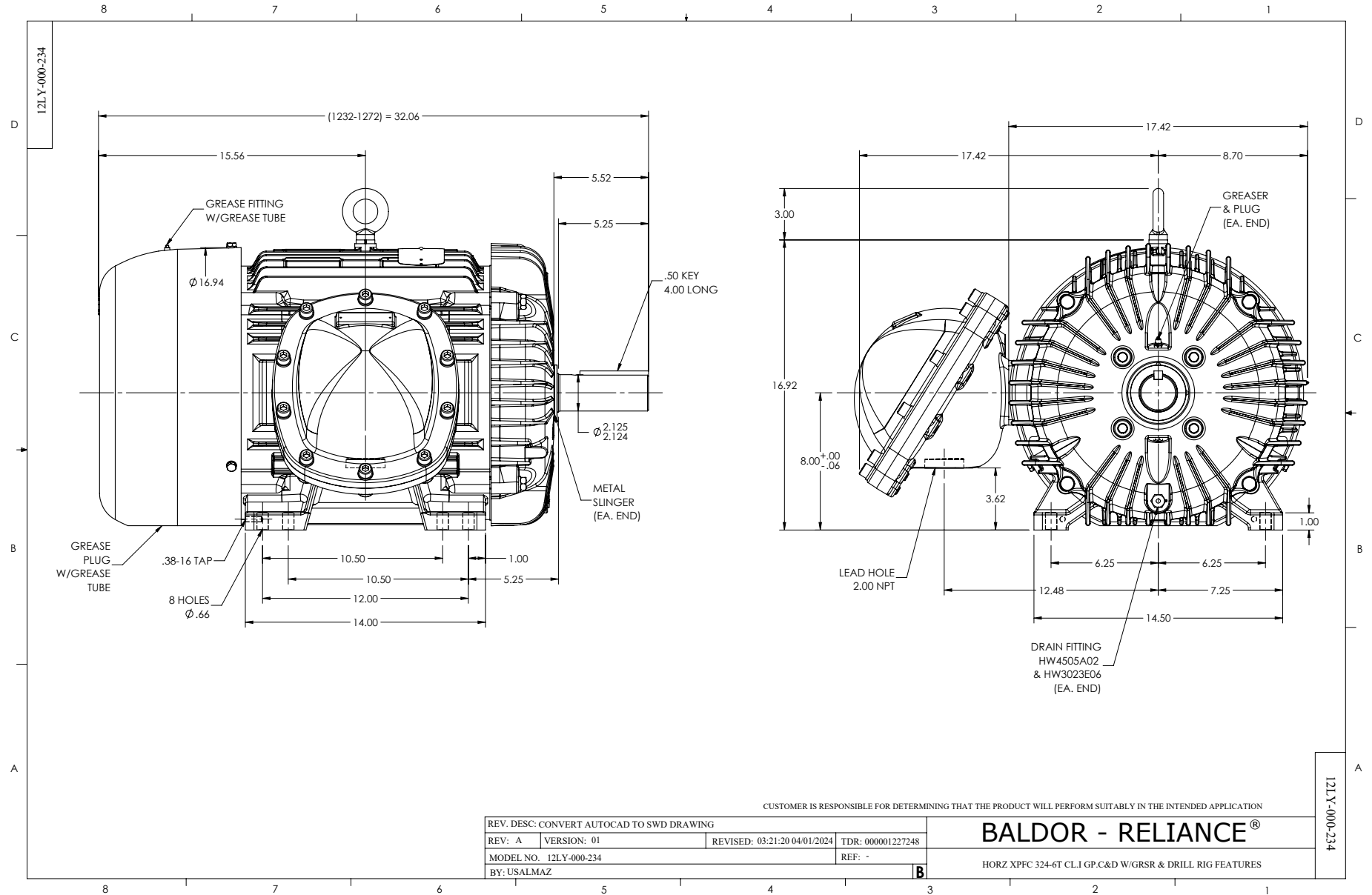
Typical performance - not guaranteed values.

25 HP 3 PH 50 HZ 984 RPM 380 V 1264M

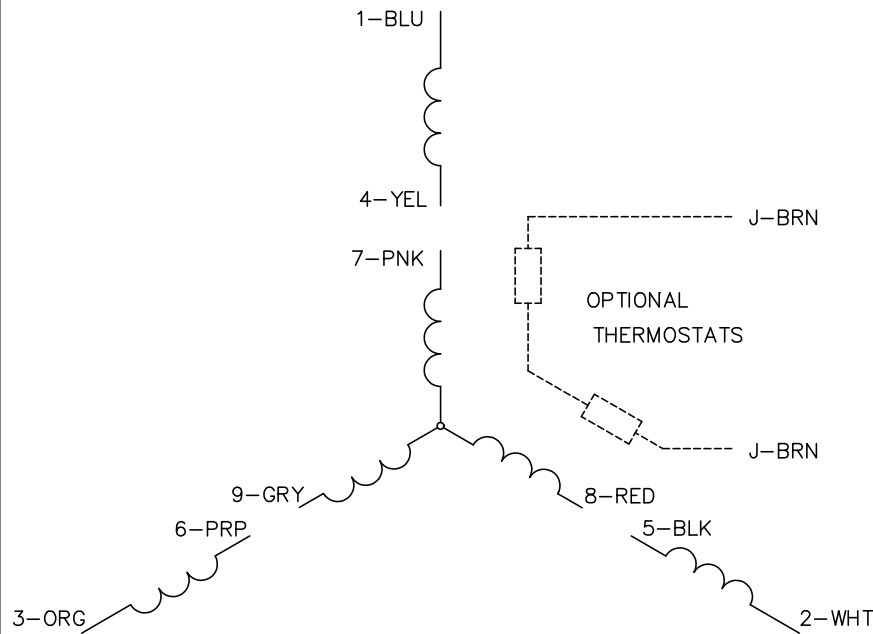
TORQUES (LB-FT): PO=358 PU=187 LR=227 LRA=239



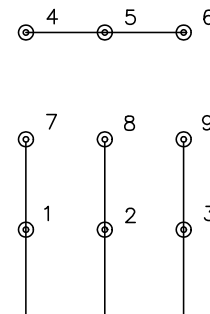




CD0005

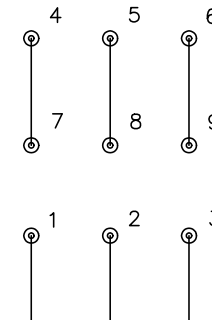


LOW VOLTAGE  
(2Y)



LINE

HIGH VOLTAGE  
(1Y)



LINE

NOTES:

1. INTERCHANGE ANY TWO LINE LEADS TO REVERSE ROTATION.
2. OPTIONAL THERMOSTATS ARE PROVIDED WHEN SPECIFIED.
3. ACTUAL NUMBER OF INTERNAL PARALLEL CIRCUITS MAY BE A MULTIPLE OF THOSE SHOWN ABOVE.
4. LEAD COLORS ARE OPTIONAL. LEADS MUST ALWAYS BE NUMBERED AS SHOWN.

|   |         |                         |              |
|---|---------|-------------------------|--------------|
| REV. DESC: REVISE TO SHOW OPTIONAL COLORS |         |                         |              |
| REV. LTR: E                               | BY: JLP | REVISED: 01/19/99 10:15 | TDR: 0171435 |
| S00000                                    |         | FILE: AAA00005140       | MDL: -       |
|   |         | MTL: -                  |              |

**BALDOR ELECTRIC Co.**

3PH, DV, 9 LEADS

CD0005