



Customer information packet

DRX322564T

25HP, 1180//985RPM, 3PH, 60HZ, 324T, XPFC, F1

Class - CLI GP C,D

Division - Division I

Specifications

| | |
|--------------------------------|--|
| Enclosure | XPFC |
| Frame | 324T |
| Frame Material | Iron |
| Frequency | 50.00 Hz 60.00 Hz |
| Haz Area Class and Group | CLI GP C,D |
| Haz Area Division | Division I |
| Motor Letter Type | Three Phase |
| Output @ Frequency | 20.000 HP @ 50 HZ 25.000 HP @ 60 HZ |
| Phase | 3 |
| Synchronous Speed @ Frequency | 1200 RPM @ 60 HZ |
| Voltage @ Frequency | 380.0 V @ 50 HZ 230.0 V @ 60 HZ 190.0 V @ 50 HZ 460.0 V @ 60 HZ |
| Agency Approvals | CSA EEV UL |
| Ambient Temperature | 40 °C |
| Auxillary Box | No Auxillary Box |
| Auxillary Box Lead Termination | None |
| Base Indicator | Rigid |
| Bearing Grease Type | Polyrex EM (-20F +300F) |
| Blower | None |
| Constant Torque Speed Range | 6 |
| Current @ Voltage | 69.000 A @ 208.0 V 63.000 A @ 230.0 V 62.000 A @ 190.0 V 32.000 A @ 460.0 V 31.000 A @ 380.0 V |
| Design Code | A |
| Drip Cover | No Drip Cover |

Part detail

| | |
|--------------|--------------|
| Revision | H |
| Type | AC |
| Mech. spec. | |
| Base | |
| Status | PRD/A |
| Elec. spec. | 12WGY116 |
| Layout | 12LY-000-234 |
| Eff. date | 11-05-2024 |
| CD Diagram | CD0180 |
| Poles | 06 |
| Leads | 9#8 |
| Proprietary | False |
| Created date | 05-30-2019 |

| | |
|-------------------------------|----------------------------|
| Duty Rating | CONT |
| Efficiency @ 100% Load | 93.0 % |
| Electrically Isolated Bearing | Not Electrically Isolated |
| Feedback Device | NO FEEDBACK |
| Haz Area Temp Code | T3C |
| Heater Indicator | No Heater |
| High Voltage Full Load Amps | 31.0 a |
| Insulation Class | F |
| Inverter Code | Inverter Duty |
| IP Rating | NONE |
| KVA Code | H |
| Lifting Lugs | Standard Lifting Lugs |
| Locked Bearing Indicator | Locked Bearing |
| Max Speed | 1800 rpm |
| Motor Lead Termination | Flying Leads |
| Motor Standards | NEMA |
| Motor Type | 1260M |
| Mounting Arrangement | F1 |
| Number of Poles | 6 |
| Overall Length | 32.00 IN |
| Power Factor | 79 |
| Product Family | Hazardous Location Motor |
| Pulley Face Code | Standard |
| Rodent Screen | None |
| RoHS Status | ROHS NON-COMPLIANT |
| Service Factor | 1.00 |
| Shaft Diameter | 2.125 IN |
| Shaft Ground Indicator | No Shaft Grounding |
| Shaft Rotation | Reversible |
| Speed | 1180 rpm |
| Speed Code | Single Speed |
| Starting Method | Direct on line |
| Thermal Device - Bearing | None |
| Thermal Device - Winding | Normally Closed Thermostat |

| Vibration Sensor Indicator | No Vibration Sensor |
|-----------------------------------|----------------------------|
| Winding Thermal 1 | None |
| Winding Thermal 2 | None |

AC Induction Motor Performance Data

Record # 44636

Typical performance - not guaranteed values

| Winding: 12WGY116-R013 | | Type: 1260M | | Enclosure: XPFC | |
|-------------------------------|--------------|----------------------------|--|------------------------------|-----------|
| Nameplate Data | | | 460 V, 60 Hz: High Voltage Connection | | |
| Rated Output (HP) | 25 | Full Load Torque | 111 LB-FT | | |
| Volts | 230/460 | Start Configuration | direct on line | | |
| Full Load Amps | 63/32 | Breakdown Torque | 308 LB-FT | | |
| R.P.M. | 1180 | Pull-up Torque | 117 LB-FT | | |
| Hz | 60 | Phase | 3 | Locked-rotor Torque | 171 LB-FT |
| NEMA Design Code | A | KVA Code | H | Starting Current | 198 A |
| Service Factor (S.F.) | 1 | No-load Current | 13.8 A | | |
| NEMA Nom. Eff. | 93 | Power Factor | 79 | Line-line Res. @ 25°C | 0.27033 Ω |
| Rating - Duty | 40C AMB-CONT | | Temp. Rise @ Rated Load | 46°C | |
| | | | Locked-rotor Power Factor | 28 | |
| | | | Rotor inertia | 11.5 LB-FT ² | |

Load Characteristics 460 V, 60 Hz, 25 HP

| % of Rated Load | 25 | 50 | 75 | 100 | 125 | 150 |
|------------------------|-----------|-----------|-----------|------------|------------|------------|
| Power Factor | 43 | 65 | 75 | 79 | 81 | 81 |
| Efficiency | 89.1 | 92.8 | 93.5 | 93.2 | 92.6 | 91.5 |
| Speed | 1195.4 | 1191.8 | 1188.2 | 1183.9 | 1179.3 | 1172.9 |
| Line amperes | 15.6 | 19.7 | 25.4 | 31.9 | 39.2 | 49.1 |

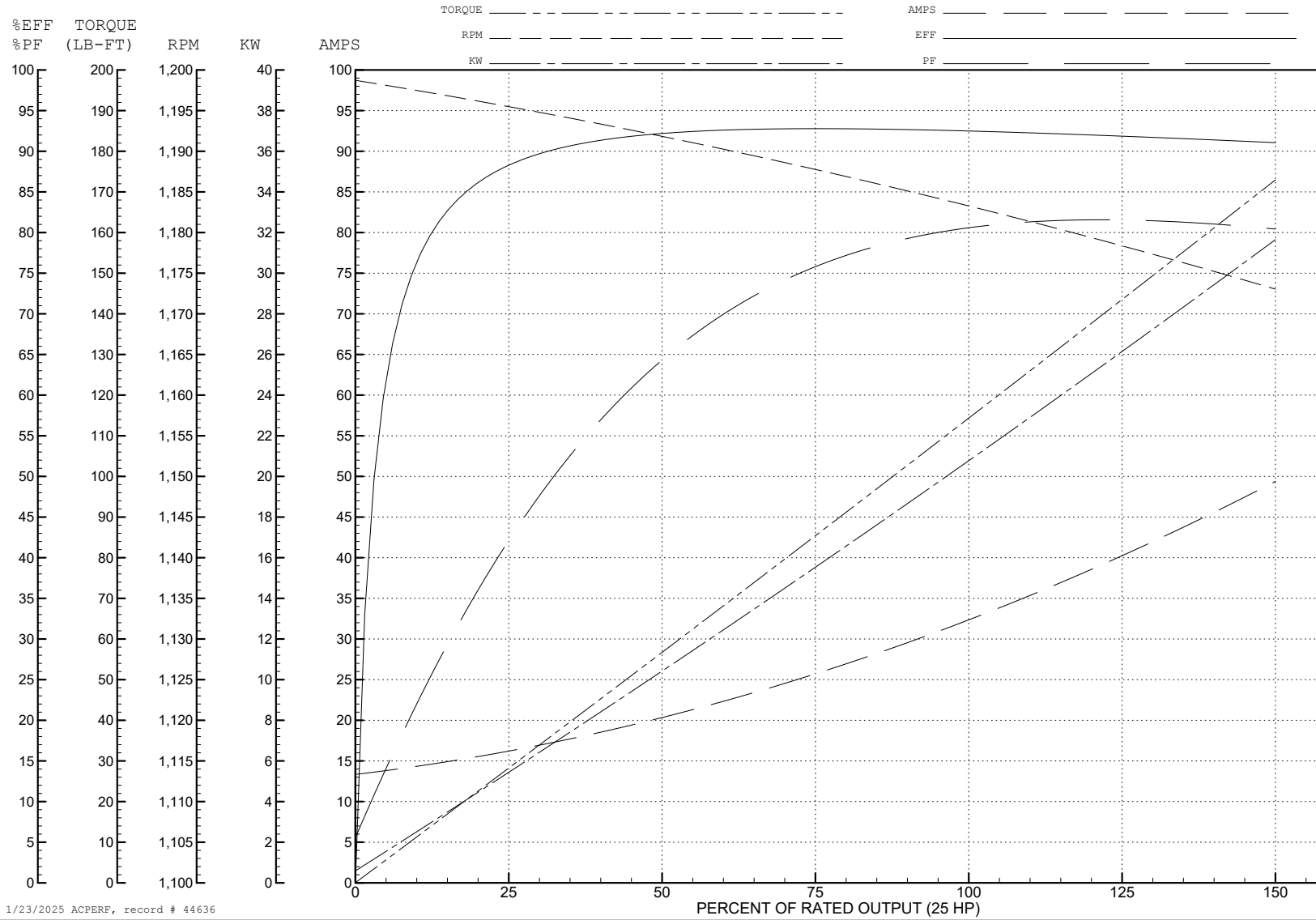
ABB Motors and Mechanical Inc.

WINDING # 12WGY116

Typical performance - not guaranteed values.

25 HP 3 PH 60 HZ 1180 RPM 460 V 1260M

TORQUES (LB-FT): PO=308 PU=117 LR=171 LRA=198



1/23/2025 ACPERF, record # 44636

AC Induction Motor Performance Data

Record # 75510

Typical performance - not guaranteed values

| Winding: 12WGY116-R026 | | Type: 1260M | | Enclosure: XPFC | | |
|-------------------------------|------------------|---------------------|--|----------------------------------|-------------------------|-------|
| Nameplate Data | | | 380 V, 50 Hz: High Voltage Connection | | | |
| Rated Output (HP) | 25//20 | | Full Load Torque | 107 LB-FT | | |
| Volts | 230/460//190/380 | | Start Configuration | direct on line | | |
| Full Load Amps | 63/32//62/31 | | Breakdown Torque | 298 LB-FT | | |
| R.P.M. | 1180//985 | | Pull-up Torque | 122 LB-FT | | |
| Hz | 60//50 | Phase | 3 | Locked-rotor Torque | 179 LB-FT | |
| NEMA Design Code | A | | KVA Code | H | Starting Current | 194 A |
| Service Factor (S.F.) | 1 | | | No-load Current | 13.66 A | |
| NEMA Nom. Eff. | 93 | Power Factor | 79 | Line-line Res. @ 25°C | 0.286 Ω | |
| Rating - Duty | 40C | | AMB-CONT | Temp. Rise @ Rated Load | 44°C | |
| S.F. Amps | | | | Temp. Rise @ S.F. Load | 54°C | |
| | | | | Locked-rotor Power Factor | 31.2 | |
| | | | | Rotor inertia | 11.5 LB-FT ² | |

Load Characteristics 380 V, 50 Hz, 20 HP

| % of Rated Load | 25 | 50 | 75 | 100 | 125 | 150 |
|------------------------|-----------|-----------|-----------|------------|------------|------------|
| Power Factor | 43 | 65 | 74 | 79 | 81 | 81 |
| Efficiency | 87.2 | 91.6 | 92.4 | 92.6 | 91.6 | 90.4 |
| Speed | 996 | 992 | 989 | 984 | 980 | 974 |
| Line amperes | 15.36 | 19.25 | 24.75 | 31.04 | 38.2 | 47.83 |

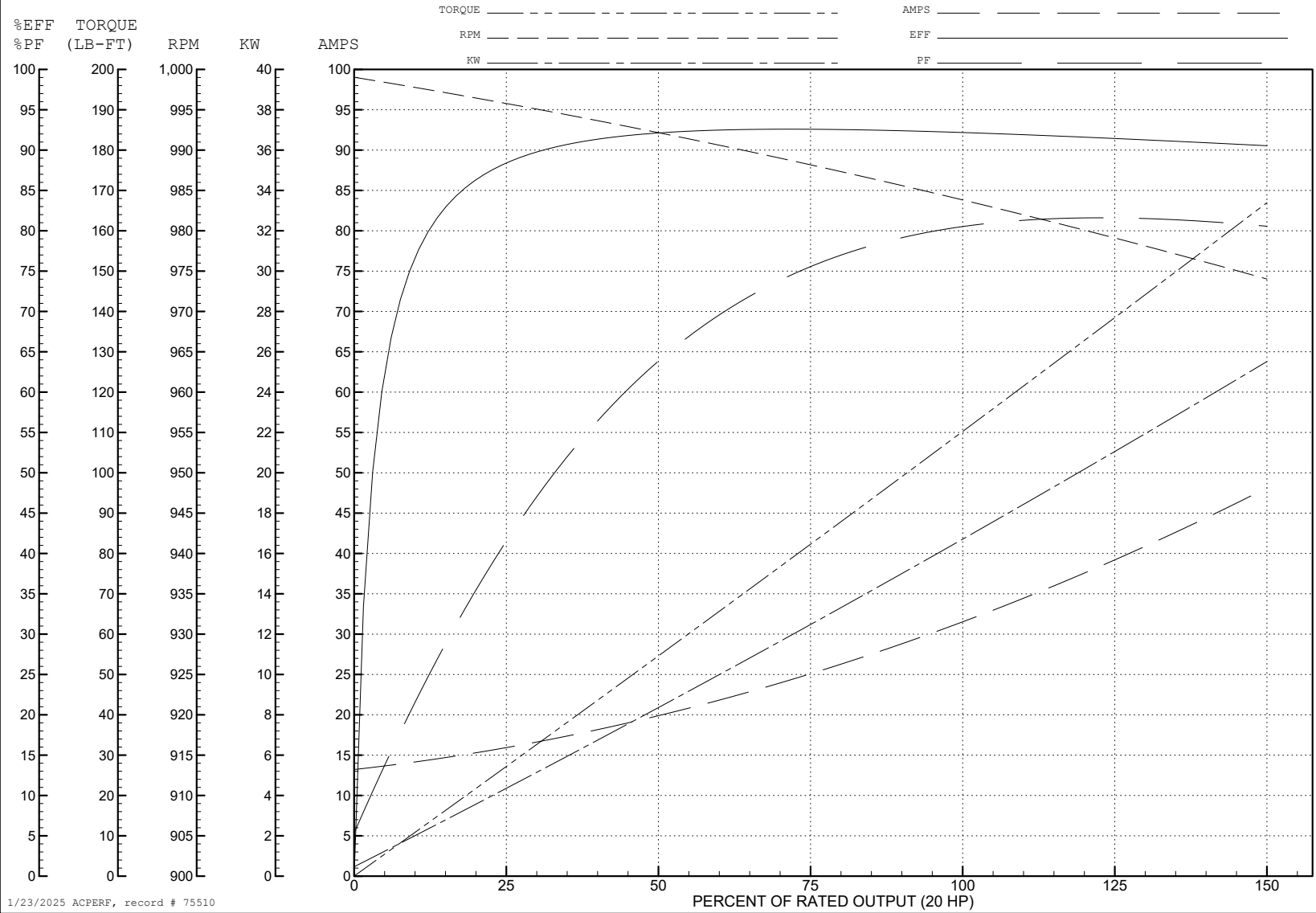
ABB Motors and Mechanical Inc.

WINDING # 12WGY116

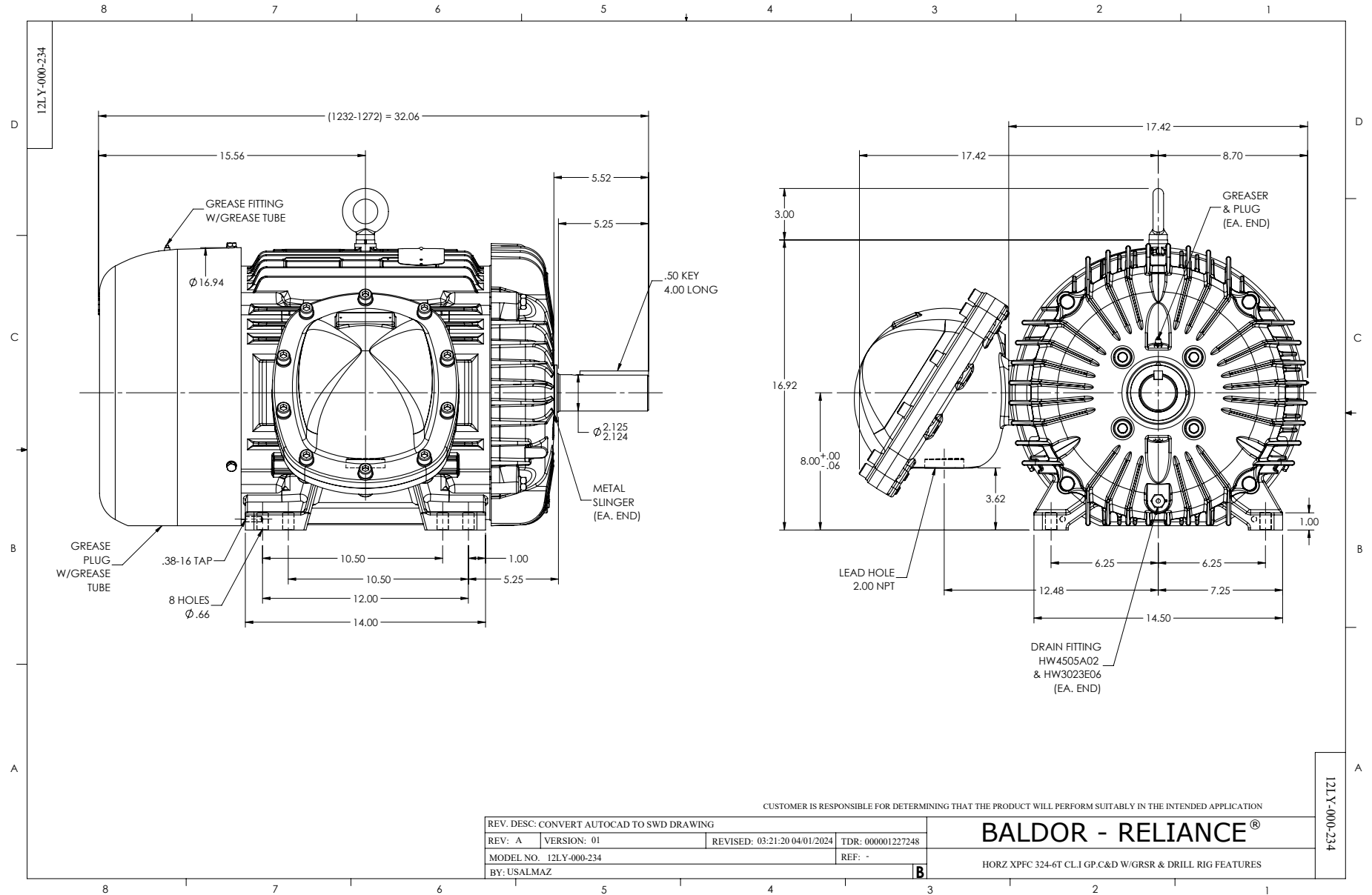
20 HP 3 PH 50 HZ 984 RPM 380 V 1260M

Typical performance - not guaranteed values.

TORQUES (LB-FT): PO=298 PU=122 LR=179 LRA=194



1/23/2025 ACPERF, record # 75510



CD0180



LOW VOLTAGE
(2D)



HIGH VOLTAGE
(1D)



NOTES:

1. INTERCHANGE ANY TWO LINE LEADS TO REVERSE ROTATION.
2. OPTIONAL THERMOSTATS ARE PROVIDED WHEN SPECIFIED.
3. ACTUAL NUMBER OF INTERNAL PARALLEL CIRCUITS MAY BE A MULTIPLE OF THOSE SHOWN ABOVE.
4. LEAD COLORS ARE OPTIONAL. LEADS MUST ALWAYS BE NUMBERED AS SHOWN.

CD0180

| | | |
|-----------------------------------|--------------------------------|-------------------|
| REV. DESC: ADD CLASS CONN00000007 | | |
| REV. LTR: D | VERSION: 01 | TDR: 000001099922 |
| FILE: \AAA\00005\148 | REVISED: 10: 25: 29 02/19/2019 | BY: ENBRIRO |
| MTL: - | © □ | |

BALDOR - RELIANCE®

3PH, DV, 9 LEADS, DELTA CONNECTION

SH 1 of 1