

# ABB BALDOR RELIANCE III

---

## Customer information packet

DRX281564T

15HP, 1175//985RPM, 3PH, 60HZ, 284T, XPFC, F1

Class - CLI GP C,D

Division - Division I

**Specifications**

<b>Enclosure</b>	XPFC
<b>Frame</b>	284T
<b>Frame Material</b>	Iron
<b>Frequency</b>	50.00 Hz 60.00 Hz
<b>Haz Area Class and Group</b>	CLI GP C,D
<b>Haz Area Division</b>	Division I
<b>Motor Letter Type</b>	Three Phase
<b>Output @ Frequency</b>	10.000 HP @ 50 HZ 15.000 HP @ 60 HZ
<b>Phase</b>	3
<b>Synchronous Speed @ Frequency</b>	1200 RPM @ 60 HZ
<b>Voltage @ Frequency</b>	380.0 V @ 50 HZ 230.0 V @ 60 HZ 190.0 V @ 50 HZ 460.0 V @ 60 HZ
<b>Agency Approvals</b>	CSA EEV UL
<b>Ambient Temperature</b>	40 °C
<b>Auxiliary Box</b>	NO AUXILLARY BOX
<b>Auxiliary Box Lead Termination</b>	None
<b>Base Indicator</b>	Rigid
<b>Bearing Grease Type</b>	Polyrex EM (-20F +300F)
<b>Blower</b>	None
<b>Constant Torque Speed Range</b>	6
<b>Current @ Voltage</b>	42.000 A @ 230.0 V 42.000 A @ 208.0 V 36.000 A @ 190.0 V 21.000 A @ 460.0 V 18.000 A @ 380.0 V
<b>Design Code</b>	A
<b>Drip Cover</b>	No Drip Cover

**Part Detail**

<b>Revision</b>	J
<b>Type</b>	AC
<b>Mech. spec.</b>	
<b>Base</b>	
<b>Status</b>	PRD/A
<b>Elec. spec.</b>	10WGY561
<b>Layout</b>	10LY-000-549
<b>Eff. date</b>	06-11-2025
<b>CD Diagram</b>	CD0180
<b>Poles</b>	06
<b>Leads</b>	9#10
<b>Proprietary</b>	False
<b>Created date</b>	05-30-2019

<b>Duty Rating</b>	CONT
<b>Efficiency @ 100% Load</b>	91.7 %
<b>Electrically Isolated Bearing</b>	Not Electrically Isolated
<b>Feedback Device</b>	NO FEEDBACK
<b>Haz Area Temp Code</b>	T3C
<b>Heater Indicator</b>	No Heater
<b>High Voltage Full Load Amps</b>	18.0 a
<b>Insulation Class</b>	F
<b>Inverter Code</b>	Inverter Duty
<b>IP Rating</b>	NONE
<b>KVA Code</b>	H
<b>Lifting Lugs</b>	Standard Lifting Lugs
<b>Locked Bearing Indicator</b>	Locked Bearing
<b>Max Speed</b>	1800 rpm
<b>Motor Lead Termination</b>	Flying Leads
<b>Motor Standards</b>	NEMA
<b>Motor Type</b>	1046M
<b>Mounting Arrangement</b>	F1
<b>Number of Poles</b>	6
<b>Overall Length</b>	28.61 IN
<b>Power Factor</b>	73
<b>Product Family</b>	Hazardous Location Motor
<b>Pulley Face Code</b>	Standard
<b>Rodent Screen</b>	None
<b>RoHS Status</b>	ROHS NON-COMPLIANT
<b>Service Factor</b>	1.00
<b>Shaft Diameter</b>	1.875 IN
<b>Shaft Ground Indicator</b>	No Shaft Grounding
<b>Shaft Rotation</b>	Reversible
<b>Speed</b>	1175 rpm
<b>Speed Code</b>	Single Speed
<b>Starting Method</b>	Direct on line
<b>Thermal Device - Bearing</b>	None
<b>Thermal Device - Winding</b>	Normally Closed Thermostat

**Vibration Sensor Indicator**

**No Vibration Sensor**

---

**Winding Thermal 1**

**None**

---

**Winding Thermal 2**

**None**

---

**Nameplate**

**NP1401XPSLEV**

<b>NO.</b>		<b>CC</b>	010A		
<b>S/N</b>		<b>TEMP CODE</b>	T3C		
<b>SPEC.</b>	10-0000-0768	<b>INV.TYPE</b>	PWM		
<b>CAT.NO.</b>	DRX281564T	<b>C HP FR</b>	60	<b>C HP TO</b>	90
<b>HP</b>	15//10	<b>CT HZ FROM</b>	6	<b>CT HZ TO</b>	60
<b>VOLTS</b>	230/460//190/380	<b>VT HZ FROM</b>	6	<b>VT HZ TO</b>	60
<b>AMPS</b>	42/21//36/18	<b>MAG CUR</b>	22/11		
<b>RPM</b>	1175//985	<b>MX RPM</b>	1800		
<b>HZ</b>	60//50	<b>PH</b>	3	<b>CL</b>	F
		<b>NOM.EFF.</b>	91.7		
<b>SER.F.</b>	1.00	<b>DES</b>	A	<b>SL HZ</b>	1.3
		<b>WK2</b>	4.9		
<b>FRAME</b>	284T	<b>RATING</b>	40C AMB-CONT		
	55C AMB @ 1.0 SF, 60C RISE				
	1.15SF ON SINEWAVE		NEMA MG-1 PT.5,IP55		

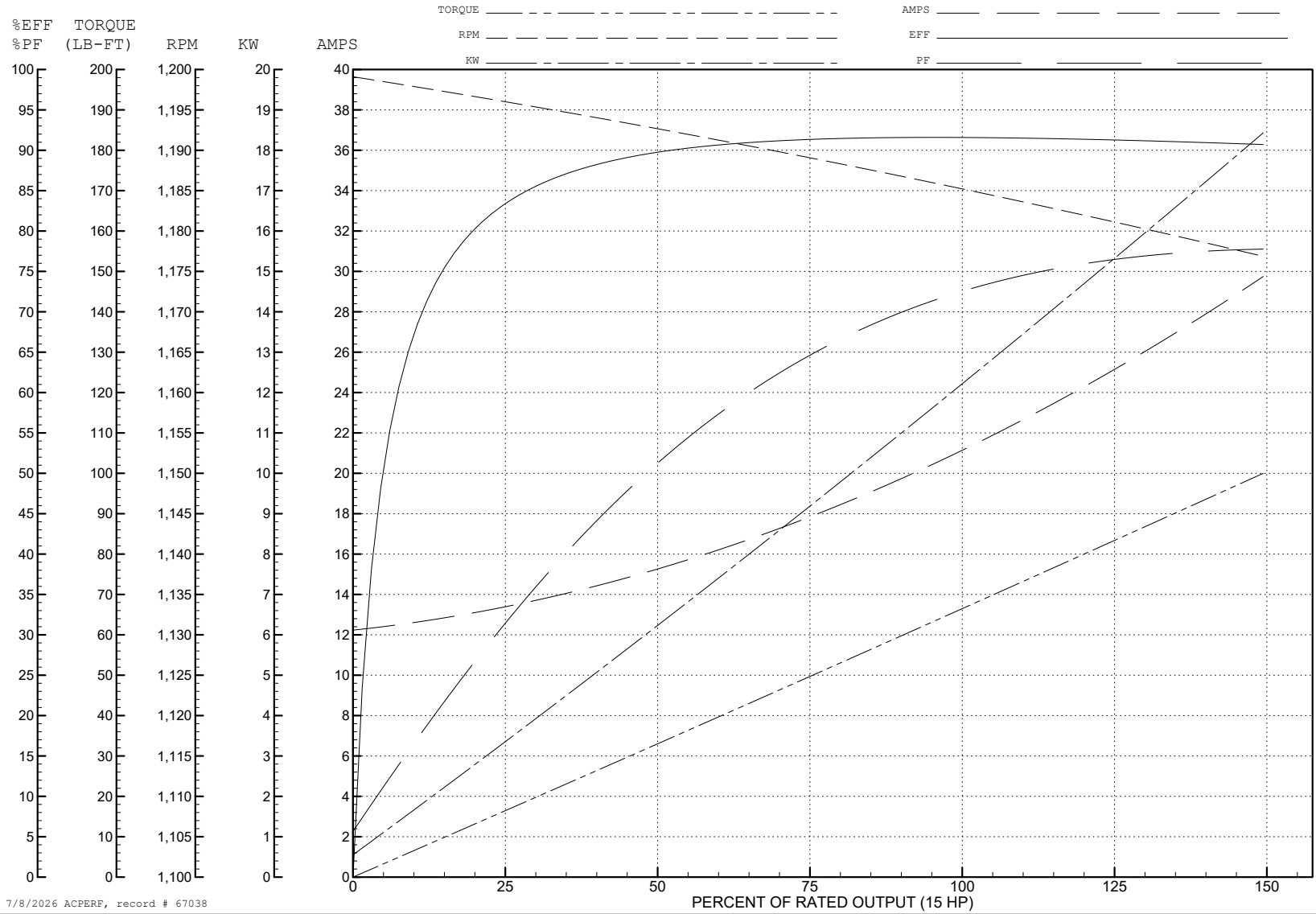
ABB Motors and Mechanical Inc.

WINDING # 10WGY561

Typical performance - not guaranteed values.

15 HP 3 PH 60 HZ 1175 RPM 460 V 1046M

TORQUES (LB-FT): PO=213 PU=93.1 LR=114 LRA=144



7/8/2026 ACPERF, record # 67038

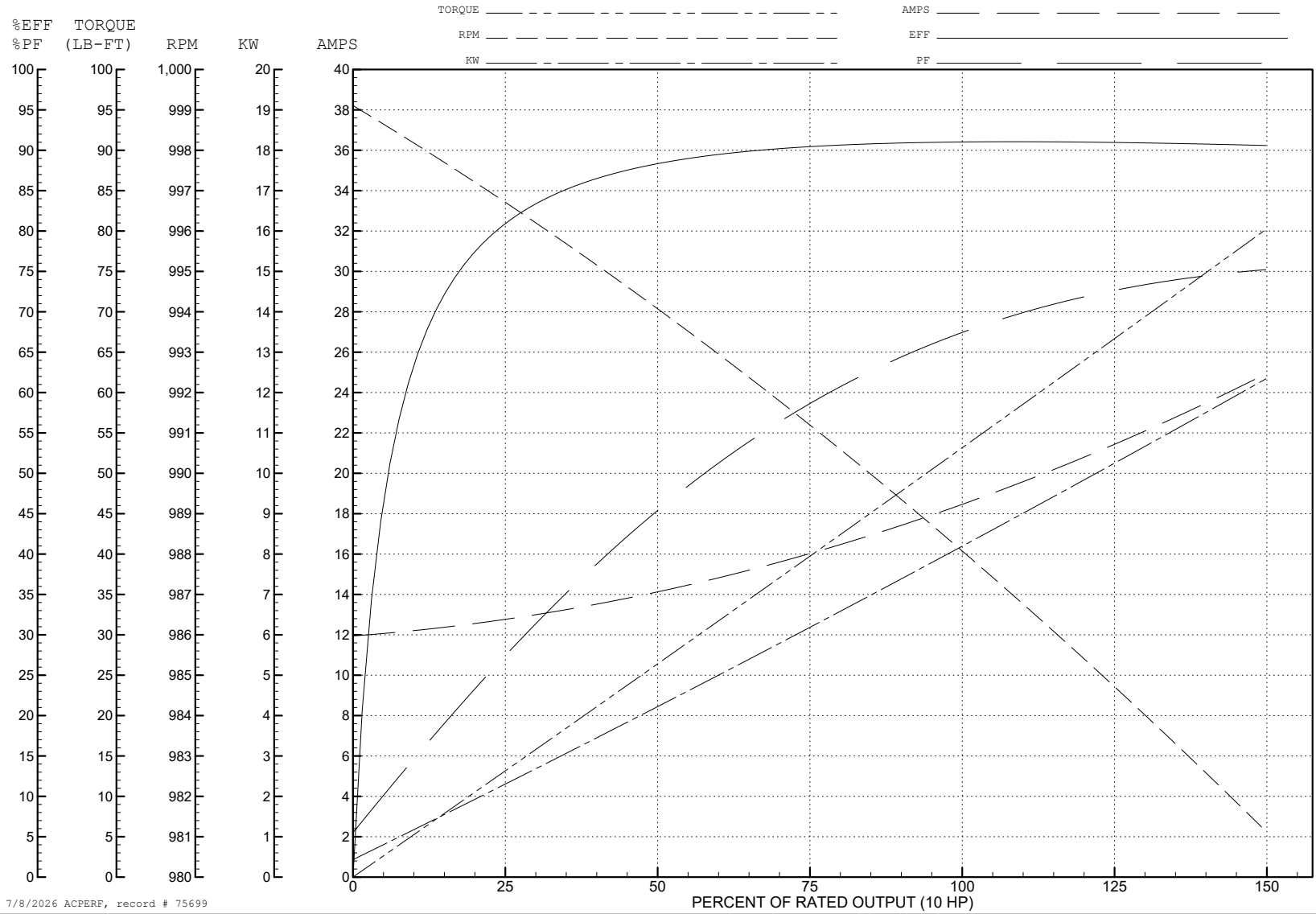
ABB Motors and Mechanical Inc.

WINDING # 10WGY561

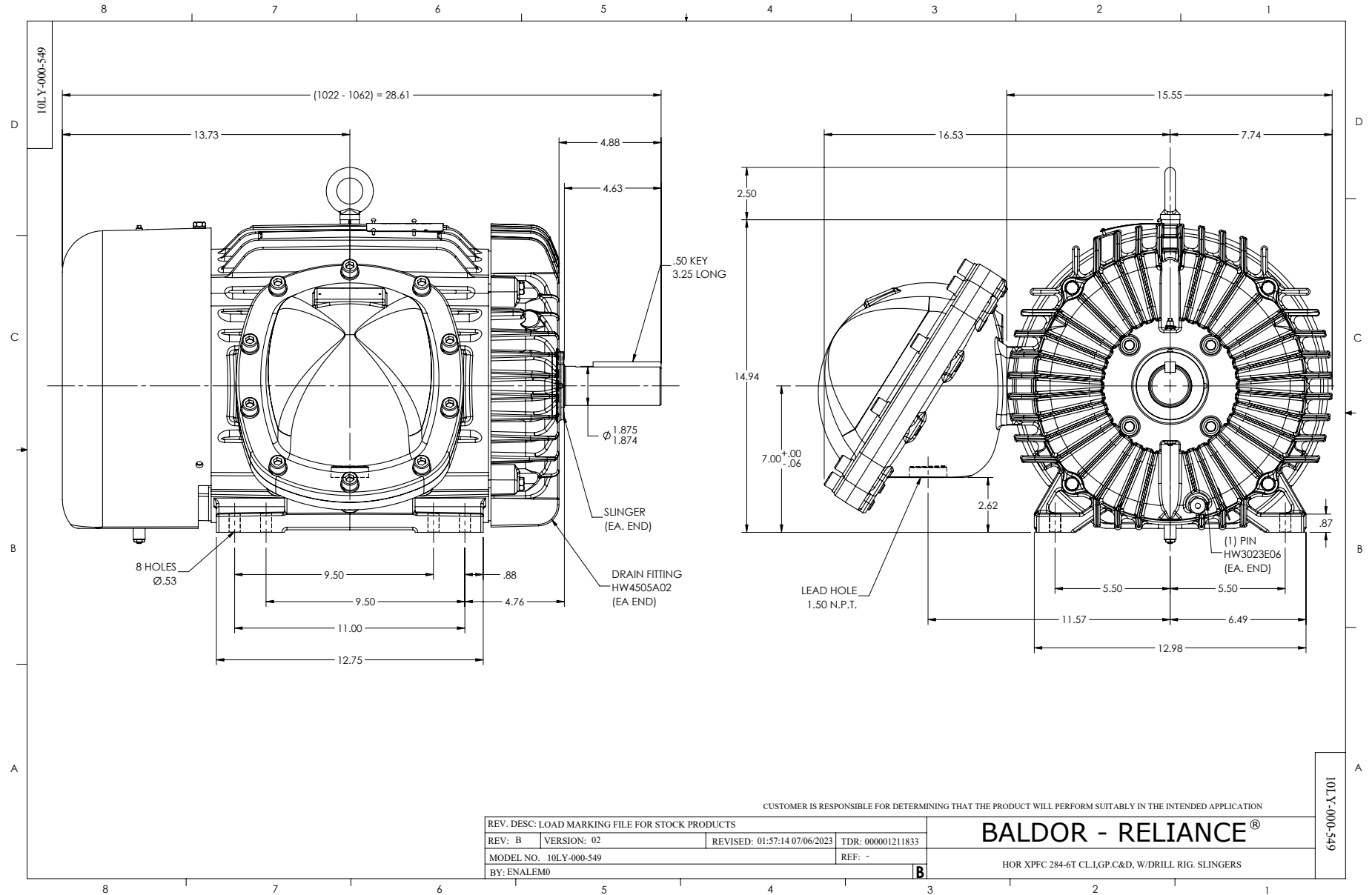
Typical performance - not guaranteed values.

10 HP 3 PH 50 HZ 988 RPM 380 V 1046M

TORQUES (LB-FT): PO=205 PU=95.7 LR=117 LRA=139



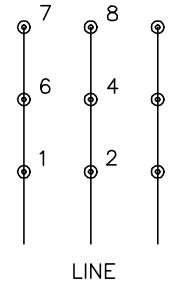
7/8/2026 ACPERF, record # 75699



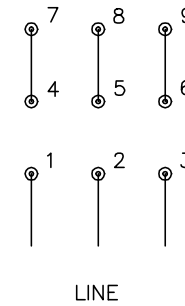
CD0180



LOW VOLTAGE  
(2D)



HIGH VOLTAGE  
(1D)



NOTES:

1. INTERCHANGE ANY TWO LINE LEADS TO REVERSE ROTATION.
2. OPTIONAL THERMOSTATS ARE PROVIDED WHEN SPECIFIED.
3. ACTUAL NUMBER OF INTERNAL PARALLEL CIRCUITS MAY BE A MULTIPLE OF THOSE SHOWN ABOVE.
4. LEAD COLORS ARE OPTIONAL. LEADS MUST ALWAYS BE NUMBERED AS SHOWN.

CD0180

REV. DESC: ADD CLASS CONN00000007		
REV. LTR: D	VERSION: 01	TDR: 000001099922
FILE: \AAA\00005\148	REVISED: 10: 25: 29 02/19/2019	BY: ENBRIRO
MTL: -	© □	

**BALDOR - RELIANCE®**

3PH, DV, 9 LEADS, DELTA CONNECTION

SH 1 of 1