

ABB BALDOR RELIANCE III

Customer information packet

DRX25164T

10HP, 1180//980RPM, 3PH, 60HZ, 256T, XPFC, F1

Class - CLI GP C,D

Division - Division I

Specifications

Enclosure	XPFC
Frame	256T
Frame Material	Iron
Frequency	60.00 Hz
Haz Area Class and Group	CLI GP C,D
Haz Area Division	Division I
Motor Letter Type	Three Phase
Output @ Frequency	10.000 HP @ 60 HZ 7.500 HP @ 50 HZ
Phase	3
Synchronous Speed @ Frequency	1200 RPM @ 60 HZ
Voltage @ Frequency	380.0 V @ 50 HZ 230.0 V @ 60 HZ 190.0 V @ 50 HZ 460.0 V @ 60 HZ
Agency Approvals	CSA EEV UL
Ambient Temperature	40 °C
Auxiliary Box	NO AUXILLARY BOX
Auxiliary Box Lead Termination	None
Base Indicator	Rigid
Bearing Grease Type	Polyrex EM (-20F +300F)
Blower	None
Constant Torque Speed Range	6
Current @ Voltage	30.400 A @ 208.0 V 30.000 A @ 230.0 V 28.000 A @ 190.0 V 15.000 A @ 460.0 V 14.000 A @ 380.0 V
Design Code	A
Drip Cover	No Drip Cover
Duty Rating	CONT

Part Detail

Revision	H
Type	AC
Mech. spec.	
Base	
Status	PRD/A
Elec. spec.	09WGZ383
Layout	09LY-000-552
Eff. date	02-14-2024
CD Diagram	CD0005
Poles	06
Leads	9#12
Proprietary	False
Created date	05-30-2019

Efficiency @ 100% Load	91.0 %
Electrically Isolated Bearing	Not Electrically Isolated
Feedback Device	NO FEEDBACK
Haz Area Temp Code	T3C
Heater Indicator	No Heater
High Voltage Full Load Amps	14.0 a
Insulation Class	F
Inverter Code	Inverter Duty
IP Rating	NONE
KVA Code	J
Lifting Lugs	Standard Lifting Lugs
Locked Bearing Indicator	Locked Bearing
Max Speed	1800 rpm
Motor Lead Termination	Flying Leads
Motor Standards	NEMA
Motor Type	0956M
Mounting Arrangement	F1
Number of Poles	6
Overall Length	25.50 IN
Power Factor	70
Product Family	Hazardous Location Motor
Pulley Face Code	Standard
Rodent Screen	None
RoHS Status	ROHS NON-COMPLIANT
Service Factor	1.00
Shaft Diameter	1.625 IN
Shaft Ground Indicator	No Shaft Grounding
Shaft Rotation	Reversible
Speed	1180 rpm
Speed Code	Single Speed
Starting Method	Direct on line
Thermal Device - Bearing	None
Thermal Device - Winding	Normally Closed Thermostat
Vibration Sensor Indicator	No Vibration Sensor

Winding Thermal 1

None

Winding Thermal 2

None

Nameplate

NP1401XPSLEV

NO.		CC	010A	
S/N		TEMP CODE	T3C	
SPEC.	09-0000-1381		INV.TYPE	PWM
CAT.NO.	DRX25164T		C HP FR	60
HP	10//7.5		C HP TO	90
VOLTS	230/460//190/380		CT HZ FROM	6
AMPS	30/15//28/14		CT HZ TO	60
RPM	1180//980		VT HZ FROM	6
HZ	60//50	PH	3	VT HZ TO
SER.F.	1.00	DES	A	NOM.EFF.
FRAME	256T	SL HZ	1	91
	RATING	40C AMB-CONT		
	55C AMB @ 1.0 SF, 60C RISE			
	1.15SF ON SINEWAVE		NEMA MG-1 PT.5,IP55	

ABB Motors and Mechanical Inc.

WINDING # 09WGZ383

Typical performance - not guaranteed values.

10 HP 3 PH 60 HZ 1180 RPM 460 V 0956M

TORQUES (LB-FT): PO=146 PU=53.6 LR=73.6 LRA=95.3

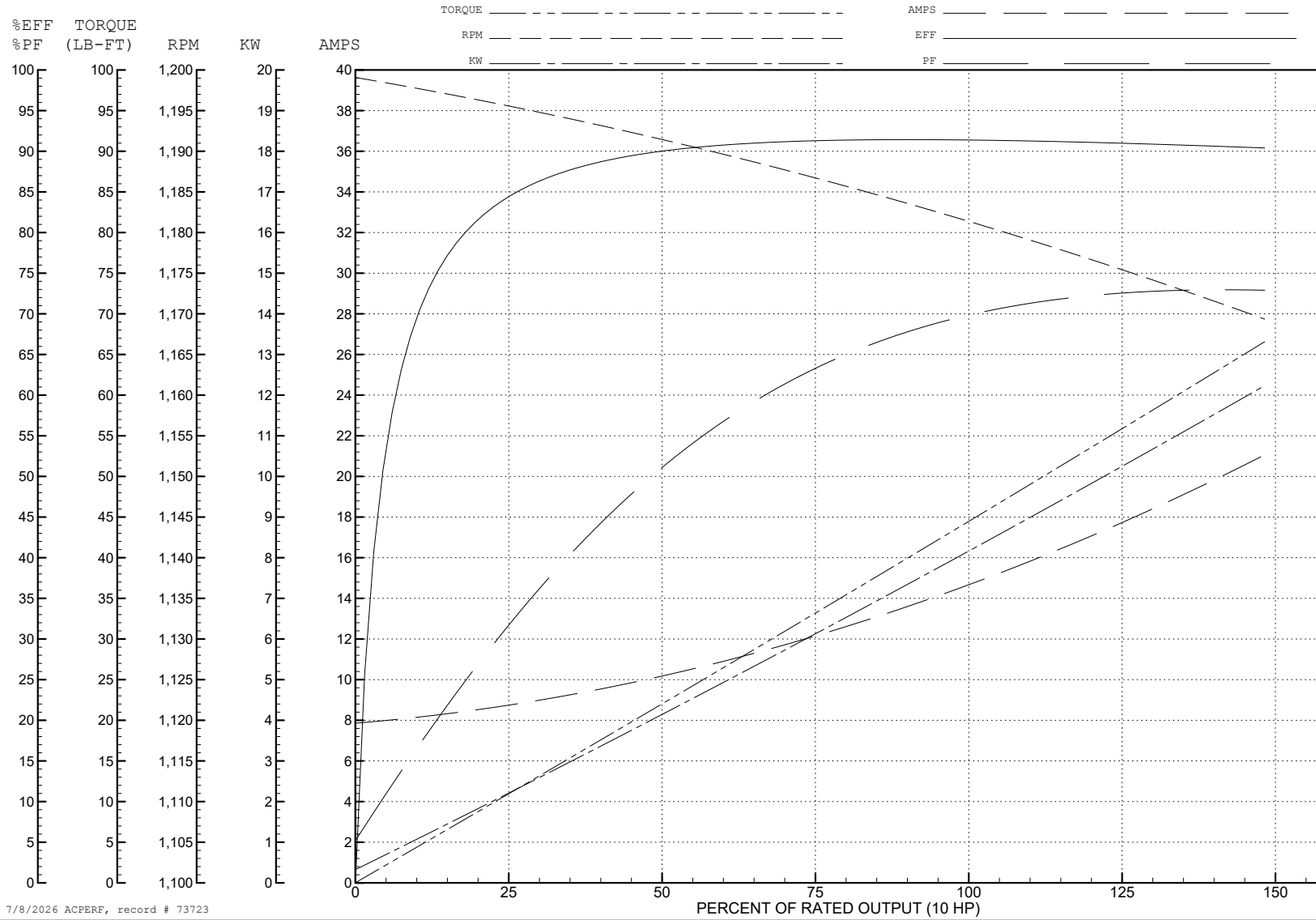


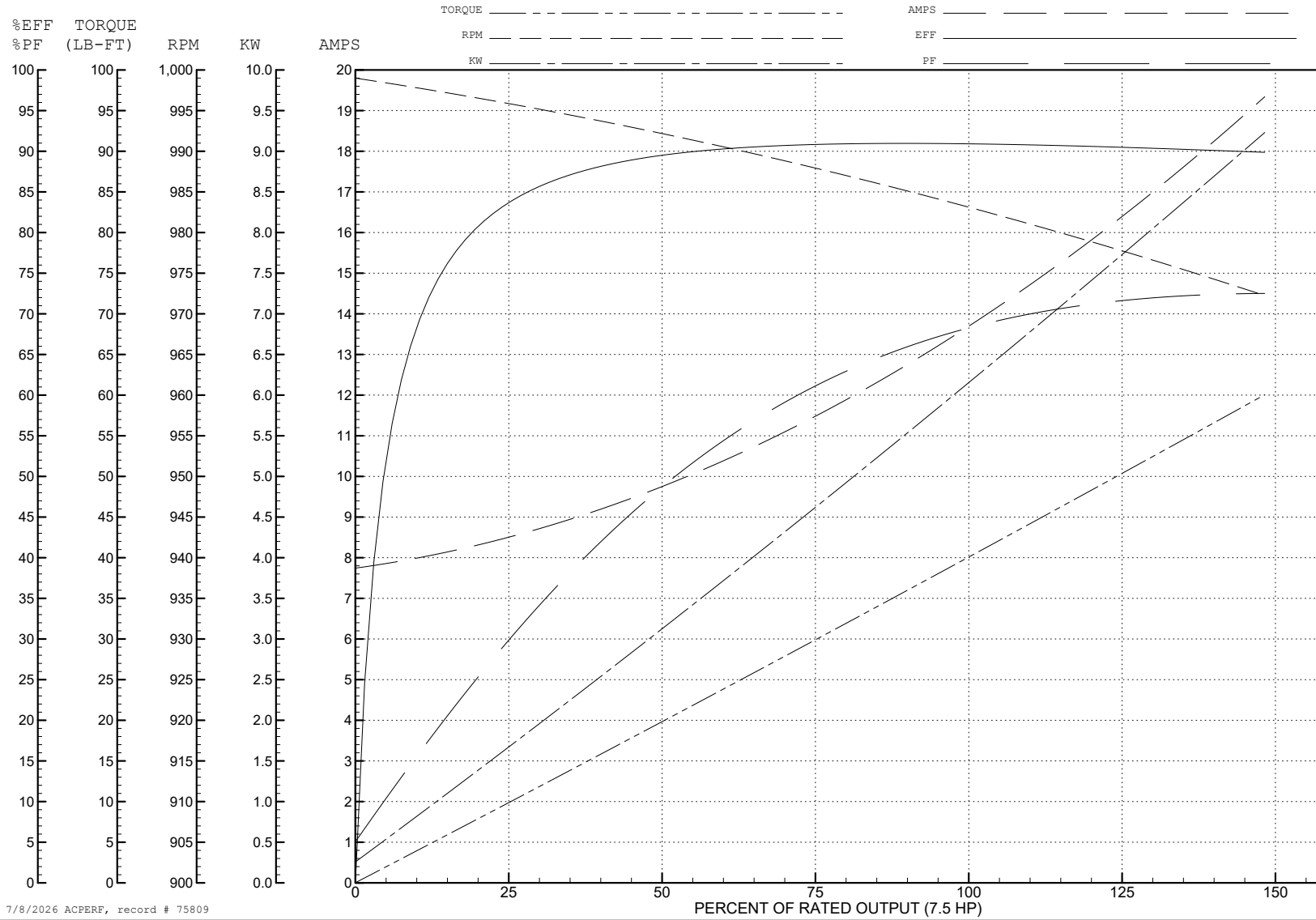
ABB Motors and Mechanical Inc.

WINDING # 09WGZ383

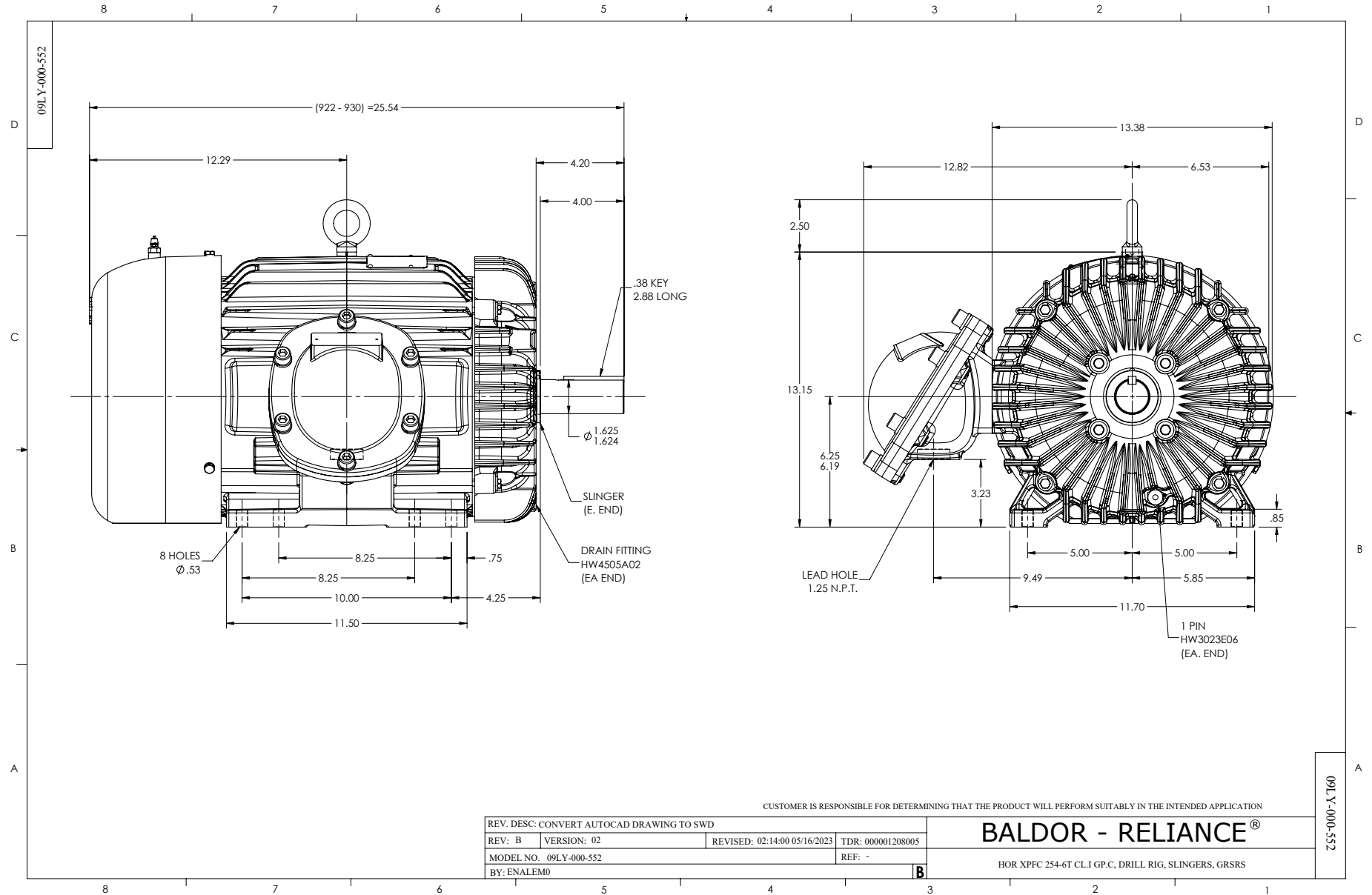
7.5 HP 3 PH 50 HZ 984 RPM 380 V 0956M

Typical performance - not guaranteed values.

TORQUES (LB-FT): PO=141 PU=56.44 LR=77.49 LRA=93.43



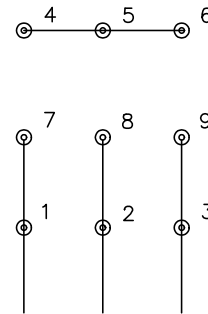
7/8/2026 ACPERF, record # 75809



CD0005



LOW VOLTAGE
(2Y)



LINE

HIGH VOLTAGE
(1Y)



LINE

NOTES:

1. INTERCHANGE ANY TWO LINE LEADS TO REVERSE ROTATION.
2. OPTIONAL THERMOSTATS ARE PROVIDED WHEN SPECIFIED.
3. ACTUAL NUMBER OF INTERNAL PARALLEL CIRCUITS MAY BE A MULTIPLE OF THOSE SHOWN ABOVE.
4. LEAD COLORS ARE OPTIONAL. LEADS MUST ALWAYS BE NUMBERED AS SHOWN.

CD0005

REV. DESC: REVISE TO SHOW OPTIONAL COLORS

REV. LTR: E BY: JLP REVISED: 01/19/99 10:15 TDR: 0171435

500000

FILE: AAA00005140

MDL: -

MTL: -

BALDOR ELECTRIC Co.

3PH, DV, 9 LEADS