

ABB BALDOR RELIANCE III



Customer information packet DMG2307

0219AT, 7.5KWKW, 2500RPM, 230, 230, DPGF, F2

Specifications

Armature Voltage	230 V
Base Speed	2500 rpm
Enclosure	DPFG
Field Voltage	230 V
Output Power	7.500 KW
Agency Approvals	CSA
Ambient Temperature	40 °C
Armature Current	32.6 a
Drip Cover	No Drip Cover
Duty Rating	CONT
Feedback Device	NO FEEDBACK
Field Winding Type	COMPOUND
Heater Indicator	No Heater
Insulation Class	F
Lifting Lugs	Standard Lifting Lugs
Motor Standards	NEMA
Mounting Arrangement	F2
Overall Length	24.50 IN
Service Factor	1.00
Shaft Diameter	1.375 IN
Shaft Ground Indicator	No Shaft Grounding
Shaft Slinger Indicator	No Slinger
Thermal Device - Bearing	None

Part Detail

Revision	A
Type	DC
Mech. spec.	
Base	
Status	PRD/A
Elec. spec.	K0019A
Layout	1486
Eff. date	01-12-2022
CD Diagram	
Poles	00
Leads	
Proprietary	False
Created date	11-26-2019

Nameplate

15405										
CAT.NO.		MODEL NO.	T21S8010							
KW	7.5KW	RPM	2500	FRAME	0219AT					
ARM VOLTS	230	ARM AMPS	32.60	WOUND	COMPOUND					
FIELD VOLTS	230	FIELD AMPS	1.73-1.15							
FIELD CONN.		OHMS	132.9	INSUL. CLASS	F					
ENCL	DPFG	DUTY	CONT	MAX AMBIENT	40					
SERVICE FACTOR	1.0									
S/N		E/S	K0019A							
	BRUSH:150986-21-1									
O.D.E. BRG.	6207	D.E. BRG.	6207	BRUSH	150986-21-1				QTY	2

Accessories

Part number	Description	Multiplier
91EP5000A01	C-FACE CONVERSION KIT FOR STOCK MTR,FR 2	P1

REL S.O.	FRAME	RATING		RPM	ARM. VOLTS	ARM. AMPS
	219AT	7.50HP		2500	230	32.6
WINDING TYPE		S.F.	ENCL.	AMB °C/INSUL	DUTY	FIELD VOLTS
STAB. SHUNT		1.0	DPG	40/F	CONT	230
POWER CODE	TYPE	WK ² (LB-FT ²)	HOT ARM.CIR.RES.	FLD. AMPS@25 °C	HOT FIELD RES	
A	T	1.201	.723	1.72	199	
ARM. CIR. IND. (mh)	FIELD IND. (H)	COOLING AIR(CFM/IN H ² O)		URNS PER COIL SHUNT/SERIES	TEST DATE	
6.73	63.0	-/-		2200/5	-	

LOAD PERFORMANCE

LOAD	AMPERES	TORQUE IN OZ.-FT.	OUTPUT IN HP	RPM	% EFFICIENCY
NO LOAD	-91	0	0	2089	0
1/4	8.2	0	0	2029	0
2/4	16	0	0	1961	0
3/4	24	0	0	1894	0
4/4	33	0	0	1830	0
O.L.	49	0	0	1706	0

RPM VS. FIELD AMPS

Eg VS. FIELD AMPS

FIELD AMPS	RPM N.L.	RPM F.L.	Eg N.L. @ BASE SPEED	Eg F.L. @ BASE SPEED
1.15	2089	1829	272	274
1.04	2183	2354	264	264
.932	2305	2448	250	251
.823	2489	2589	231	234
.714	2761	2800	207	212

REMARKS: TYPICAL DATA

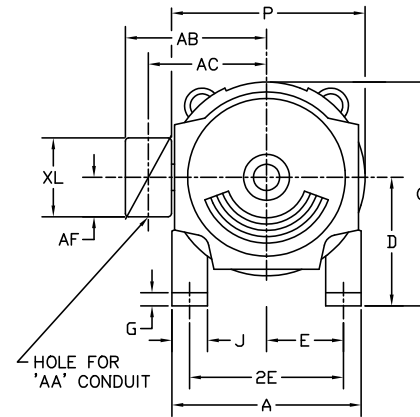
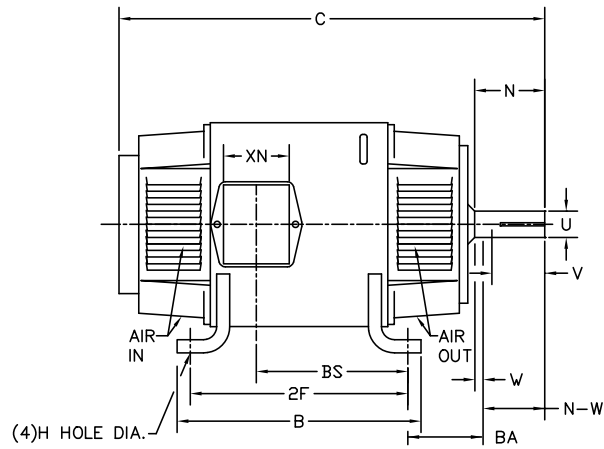


DR. BY E.H. GILLOT
 CK. BY B. GRANT
 APP. BY R. ERLACHER
 DATE 04-04-08

**D-C MOTOR
PERFORMANCE
DATA**

DK0019A
 ISSUE DATE 04-04-08

1486



FRAME	FOOT MOUNTING						D.E. SHAFT EXTENSION					DRIVE KEY		FRAME					
	BA	E	2F	G	H	J	N	N-W	U	V	W	KEY-SQ.	KEY-LONG	A	B	C	D	O	P
1810AT	2.75	3.75	11.00	.38	.406	1.50	2.90	2.77	1.125 ¹	2.50 ³	.13	.250	1.38	8.75	12.25	21.46	4.50 ²	9.00	9.00
219AT	3.50	4.25	11.00	.50	.406	2.00	3.00	2.75	1.375 ¹	2.50 ³	.25	.312	1.75	10.38	12.00	24.50	5.25 ²	10.47	10.44
258AT	4.25	5.00	12.50	.69	.531	2.25	3.44	3.25	1.625 ¹	3.00 ³	.19	.375	2.31	12.38	14.00	26.50	6.25 ²	12.47	12.44
259AT	4.25	5.00	14.00	.69	.531	2.25	3.44	3.25	1.625 ¹	3.00 ³	.19	.375	2.31	12.38	15.50	28.00	6.25 ²	12.47	12.44
288AT	4.75	5.50	14.00	.69	.531	2.50	3.91	3.75	1.875 ¹	3.50 ³	.16	.500	2.50	13.81	15.62	32.00	7.00 ²	13.88	13.75
328AT	5.25	6.25	16.00	.81	.656	3.00	4.40	4.25	2.125 ¹	4.00 ³	.15	.500	3.12	15.88	17.75	34.63	8.00 ²	15.94	15.88
329AT	5.25	6.25	18.00	.81	.656	3.00	4.40	4.25	2.125 ¹	4.00 ³	.15	.500	3.12	15.88	19.75	36.63	8.00 ²	15.94	15.88

FRAME	CONDUIT BOX							APPROXIMATE WEIGHT
	AA	AB	AC	AF	BS	XL	XN	
1810AT	3/4NPT	INTEGRAL WITH ENDPLATE						195
219AT	3/4-1	7.91	6.44	2.44	9.38	3.81	3.12	260
258AT	1-1/4	9.35	7.72	2.94	9.75	4.94	4.00	366
259AT	1-1/4	9.35	7.72	2.94	11.25	4.94	4.00	411
288AT	1-1/4	11.88	9.25	5.00	12.64	7.88	5.25	566
328AT	2	12.94	10.32	5.00	13.68	7.88	5.25	775
329AT	2	12.94	10.32	5.00	15.68	7.88	5.25	884

- 1) SHAFT DIAMETERS TO 1.500 TOLERANCE +.0000 - .0005
SHAFT DIAMETERS ABOVE 1.500 TOLERANCE +.0000 - .0010
SHAFT DIAMETERS TO 1.625 RUNOUT .002 T.I.R. MAX.
SHAFT DIAMETERS ABOVE 1.625 RUNOUT .003 T.I.R. MAX.
- 2) 'D' DIMENSION TOLERANCE +.000 - .030
- 3) 'V' DIMENSION IS MAX. HUB LENGTH ON SHAFT
- 4) CONDUIT BOX CAN BE ROTATED IN 90° STEPS ON ITS OWN AXIS.
- 5) ALL DIMENSIONS NOT NOTED ARE NOMINAL DIMENSIONS CONSULT FACTORY FOR TOLERANCES.

FOR F1 OR F2 CONDUIT BOX
LOCATION SEE SALES ORDER

1486

MATL: -			
REV:	C	CORRECTED "A" DIMENSIONS	
9871		SCALE: 0.08	BY: TBM
		FILE: CHB00003091	REVISED: 09/10/96
		TDR: 0104915	

BALDOR ELECTRIC Co.

DIM SHEET, 1810AT THRU 329AT GENERATORS

BALDOR ROUND DC ARMATURE INSULATION B/M

FRAME SIZE: **219**
VOLTS: **0-300**

CORE LENGTH: **5.62**
#SLOTS: **24**

DESCRIPTION	#PCS	SIZE (USAGE) OR PART #	PURCHASE INFO	REMARKS
SLOT LINER	24	1.38" X 5.94" (8.2IN2)	612769207BB	4824-10-CX (.015")
TOP STICK	24	6.13" (.51')	4175320005BB	AY482409011 (24-21-15)
SHAFT INSULATION	2	NA	418020001B	4824-10-CX (.007")
COMMUTATOR INSULATION	NA	8.00"	MH1094A03	"GOLD TAPE"
NOMEX/GLASS CLOTH	NA	12.00"	FH482410150	4824-10FH
SLEEVING	NA	NA	NA	4824-13AW



424503-002K