

ABB BALDOR RELIANCE III



Customer information packet D5525P

0328AT, 25HP, 1750RPM, 500, 300, TEFC,

Specifications

Armature Voltage	500 V
Base Speed	1750 rpm
Enclosure	TEFC
Field Voltage	300 V
Frame	328AT
Output Power	25.000 HP
Agency Approvals	CSA
Ambient Temperature	40 °C
Armature Current	40.9 a
Drip Cover	No Drip Cover
Duty Rating	CONT
Feedback Device	NO FEEDBACK
Field Winding Type	STR. SHUNT
Heater Indicator	No Heater
Insulation Class	F
Lifting Lugs	Standard Lifting Lugs
Motor Standards	NEMA
Overall Length	42.45 IN
Service Factor	1.00
Shaft Diameter	2.125 IN
Shaft Ground Indicator	No Shaft Grounding
Shaft Slinger Indicator	No Slinger
Thermal Device - Bearing	None

Part Detail

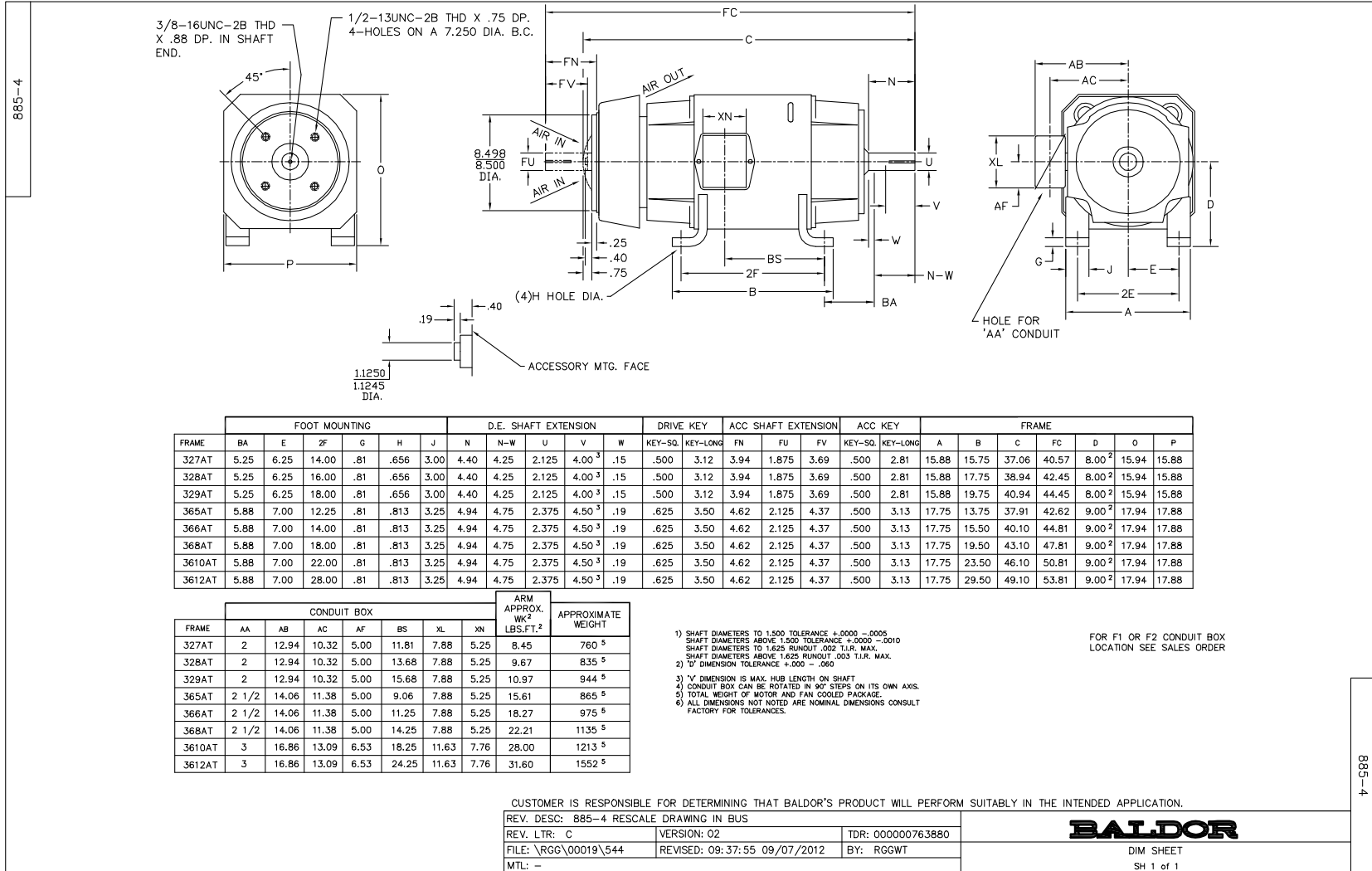
Revision	A
Type	DC
Mech. spec.	
Base	
Status	PRD/A
Elec. spec.	K0084A A
Layout	885-4
Eff. date	10-03-2023
CD Diagram	15209
Poles	00
Leads	
Proprietary	False
Created date	12-18-2019

Nameplate

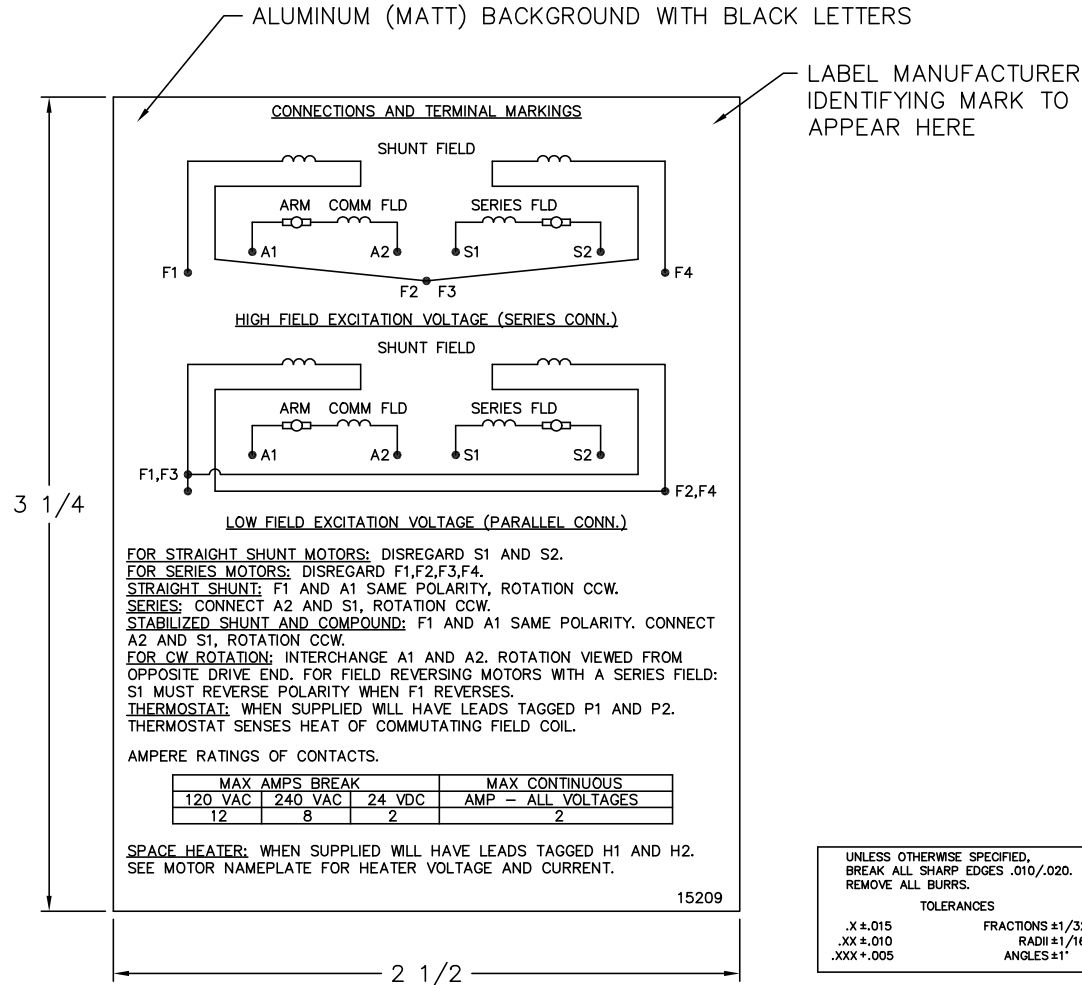
NP1734						
CAT.NO.	D5525P	MODEL	T32S8010			
HP	25	RPM	1750/2300	FRAME	0328AT	
ARM V	500	ARM A	40.90	WOUND	STR. SHUNT	
FLD V	150/300	FLD A	3.52-2.22/1.76-1.11			
CONN		OHMS	171.	CL	F	
ENCL	TEFC	DUTY	CONT	MX AMB	40	
P CODE	D	CTSR		SER.F.	1.0	
S/N		E/S	K0084A A			
	-					
O.D.E. BRG.	6210	D.E. BRG.	6211	BRUSH	28610-2	QTY 2

Accessories

Part number	Description	Multiplier
94EP5000A01	C-FACE CONVERSION KIT STOCK MTR,FR 320	



15209



NOTE:
 MATERIAL .005 MINIMUM FULL HARD ALUMINUM DULL FINISH.
 TEMP. RANGE -20°C TO +125°C MAXIMUM.
 FOR INDOOR AND OUTDOOR MOUNTING BACK.
 METAL, PRESSURE SENSITIVE BACK. MUST MEET CSA STANDARD.
 THE CSA IDENTIFYING MARK OF THE LABEL MANUFACTURER MUST APPEAR IN THE UPPER RIGHT HAND CORNER AS INDICATED.

UNLESS OTHERWISE SPECIFIED, BREAK ALL SHARP EDGES .010/.020. REMOVE ALL BURRS.

TOLERANCES

.X ±.015 FRACTIONS ±1/32
 .XX ±.010 RADII ±1/16
 .XXX ±.005 ANGLES ±1°

15209

MATL: NOTED			
REV:	G	CHANGE ALL "NAMEPLATE" TEXT TO "LABEL"	
60Z91		SCALE: -	BY: BKW
		FILE: CHB00002485	REVISED: 02/19/97
		TDR: 0115147	

BALDOR ELECTRIC Co.

LABEL, CONNECTIONS AND TERMINAL MARKINGS DC