

BALDOR • RELIANCE

Customer information packet

D5520P

0328AT, 20HP, 1750RPM, 500, 150, TEFC, F1

Specifications

Armature Voltage	500 V
Base Speed	1750 rpm
Enclosure	TEFC
Field Voltage	150 V
	300 V
Frame	328AT
Output Power	20.000 HP
Agency Approvals	CSA
Ambient Temperature	40 °C
Armature Current	32.7 a
Drip Cover	No Drip Cover
Duty Rating	CONT
Feedback Device	NO FEEDBACK
Field Winding Type	STR. SHUNT
Heater Indicator	No Heater
Insulation Class	F
Lifting Lugs	Standard Lifting Lugs
Motor Standards	NEMA
Mounting Arrangement	F1
Overall Length	42.45 IN
Service Factor	1.00
Shaft Diameter	2.125 IN
Shaft Ground Indicator	No Shaft Grounding
Shaft Slinger Indicator	No Slinger
Thermal Device - Bearing	None

Part detail

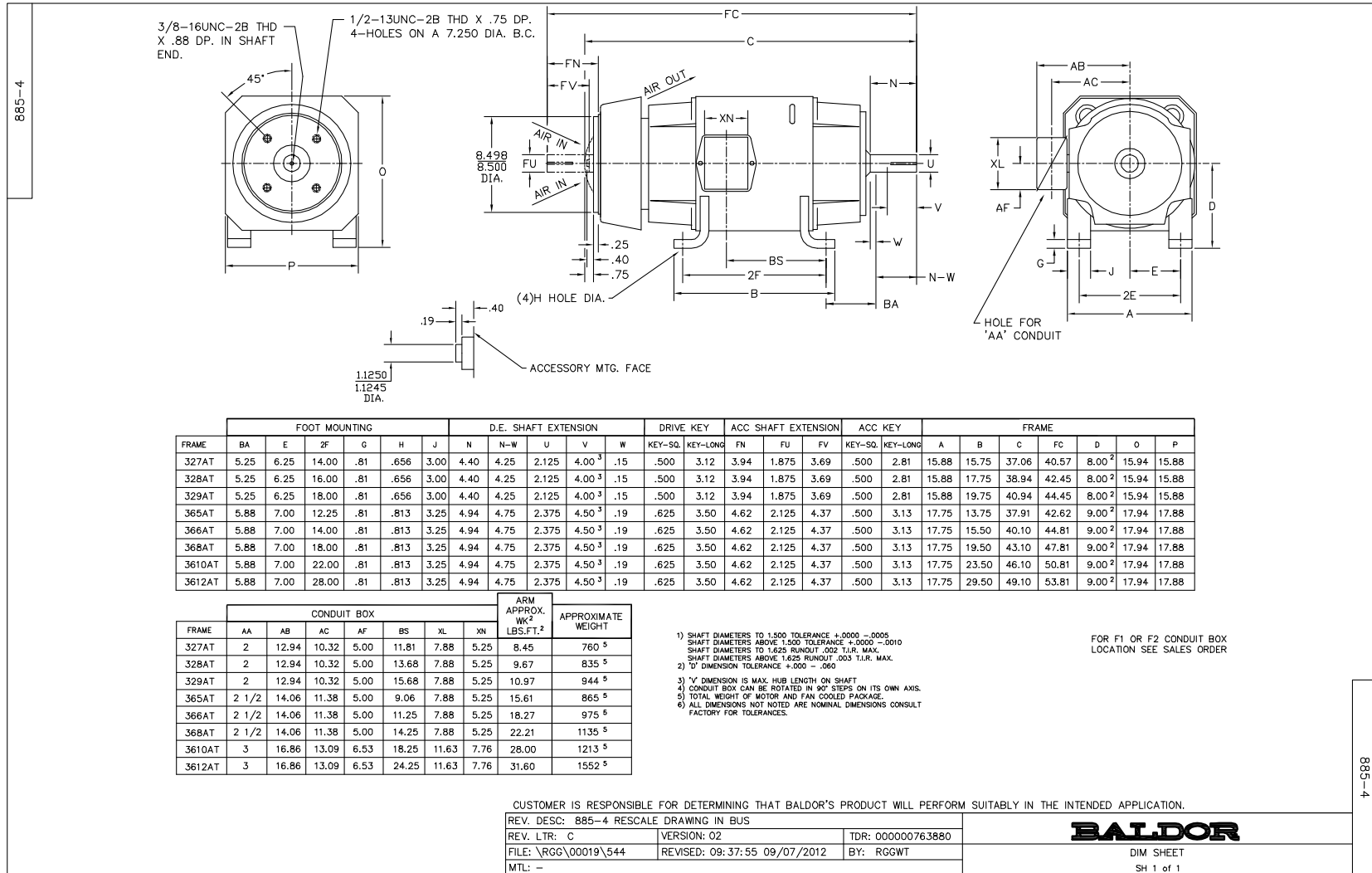
Revision	-
Type	DC
Mech. spec.	
Base	
Status	PRD/A
Elec. spec.	K0083A A
Layout	885-4
Eff. date	12-19-2019
CD Diagram	15209
Poles	00
Leads	
Proprietary	False
Created date	12-18-2019

Nameplate

NP1734						
CAT.NO.	D5520P	MODEL	T32S8008			
HP	20	RPM	1750/2300	FRAME	0328AT	
ARM V	500	ARM A	32.70	WOUND	STR. SHUNT	
FLD V	150/300	FLD A	2.22-1.30/1.11-.65			
CONN		OHMS	171.	CL	F	
ENCL	TEFC	DUTY	CONT	MX AMB	40	
P CODE	D	CTSR		SER.F.	1.0	
S/N		E/S	K0083A A			
	-					
O.D.E. BRG.	6210	D.E. BRG.	6211	BRUSH	28610-7	QTY 2

Accessories

Part number	Description	Multiplier
94EP5000A01	C-FACE CONVERSION KIT STOCK MTR,FR 320	



FRAME	FOOT MOUNTING				D.E. SHAFT EXTENSION							DRIVE KEY			ACC SHAFT EXTENSION			ACC KEY		FRAME					
	BA	E	2F	G	H	J	N	N-W	U	V	W	KEY-SQ.	KEY-LONG	FN	FU	FV	KEY-SQ.	KEY-LONG	A	B	C	FC	D	O	P
327AT	5.25	6.25	14.00	.81	.656	3.00	4.40	4.25	2.125	4.00 ³	.15	.500	3.12	3.94	1.875	3.69	.500	2.81	15.88	15.75	37.06	40.57	8.00 ²	15.94	15.88
328AT	5.25	6.25	16.00	.81	.656	3.00	4.40	4.25	2.125	4.00 ³	.15	.500	3.12	3.94	1.875	3.69	.500	2.81	15.88	17.75	38.94	42.45	8.00 ²	15.94	15.88
329AT	5.25	6.25	18.00	.81	.656	3.00	4.40	4.25	2.125	4.00 ³	.15	.500	3.12	3.94	1.875	3.69	.500	2.81	15.88	19.75	40.94	44.45	8.00 ²	15.94	15.88
365AT	5.88	7.00	12.25	.81	.813	3.25	4.94	4.75	2.375	4.50 ³	.19	.625	3.50	4.62	2.125	4.37	.500	3.13	17.75	13.75	37.91	42.62	9.00 ²	17.94	17.88
366AT	5.88	7.00	14.00	.81	.813	3.25	4.94	4.75	2.375	4.50 ³	.19	.625	3.50	4.62	2.125	4.37	.500	3.13	17.75	15.50	40.10	44.81	9.00 ²	17.94	17.88
368AT	5.88	7.00	18.00	.81	.813	3.25	4.94	4.75	2.375	4.50 ³	.19	.625	3.50	4.62	2.125	4.37	.500	3.13	17.75	19.50	43.10	47.81	9.00 ²	17.94	17.88
3610AT	5.88	7.00	22.00	.81	.813	3.25	4.94	4.75	2.375	4.50 ³	.19	.625	3.50	4.62	2.125	4.37	.500	3.13	17.75	23.50	46.10	50.81	9.00 ²	17.94	17.88
3612AT	5.88	7.00	28.00	.81	.813	3.25	4.94	4.75	2.375	4.50 ³	.19	.625	3.50	4.62	2.125	4.37	.500	3.13	17.75	29.50	49.10	53.81	9.00 ²	17.94	17.88

FRAME	CONDUIT BOX						ARM APPROX. LBS.FT. ²	APPROXIMATE WEIGHT	
	AA	AB	AC	AF	BS	XL			
327AT	2	12.94	10.32	5.00	11.81	7.88	5.25	8.45	760 ⁵
328AT	2	12.94	10.32	5.00	13.68	7.88	5.25	9.67	835 ⁵
329AT	2	12.94	10.32	5.00	15.68	7.88	5.25	10.97	944 ⁵
365AT	2 1/2	14.06	11.38	5.00	9.06	7.88	5.25	15.61	865 ⁵
366AT	2 1/2	14.06	11.38	5.00	11.25	7.88	5.25	18.27	975 ⁵
368AT	2 1/2	14.06	11.38	5.00	14.25	7.88	5.25	22.21	1135 ⁵
3610AT	3	16.86	13.09	6.53	18.25	11.63	7.76	28.00	1213 ⁵
3612AT	3	16.86	13.09	6.53	24.25	11.63	7.76	31.60	1552 ⁵

1) SHAFT DIAMETERS TO 1.500 TOLERANCE +.0000 -.0005
 SHAFT DIAMETERS ABOVE 1.500 TOLERANCE +.0000 -.0010
 SHAFT DIAMETERS TO 1.625 RUNOUT .002 T.I.R. MAX.
 SHAFT DIAMETERS ABOVE 1.625 RUNOUT .003 T.I.R. MAX.
 2) 'V' DIMENSION TOLERANCE +.000 -.060
 3) 'V' DIMENSION IS MAX. HUB LENGTH ON SHAFT
 4) CONDUIT BOX CAN BE ROTATED IN 90° STEPS ON ITS OWN AXIS.
 5) TOTAL WEIGHT OF MOTOR AND FAN COOLED PACKAGE.
 6) ALL DIMENSIONS NOT NOTED ARE NOMINAL DIMENSIONS CONSULT FACTORY FOR TOLERANCES.

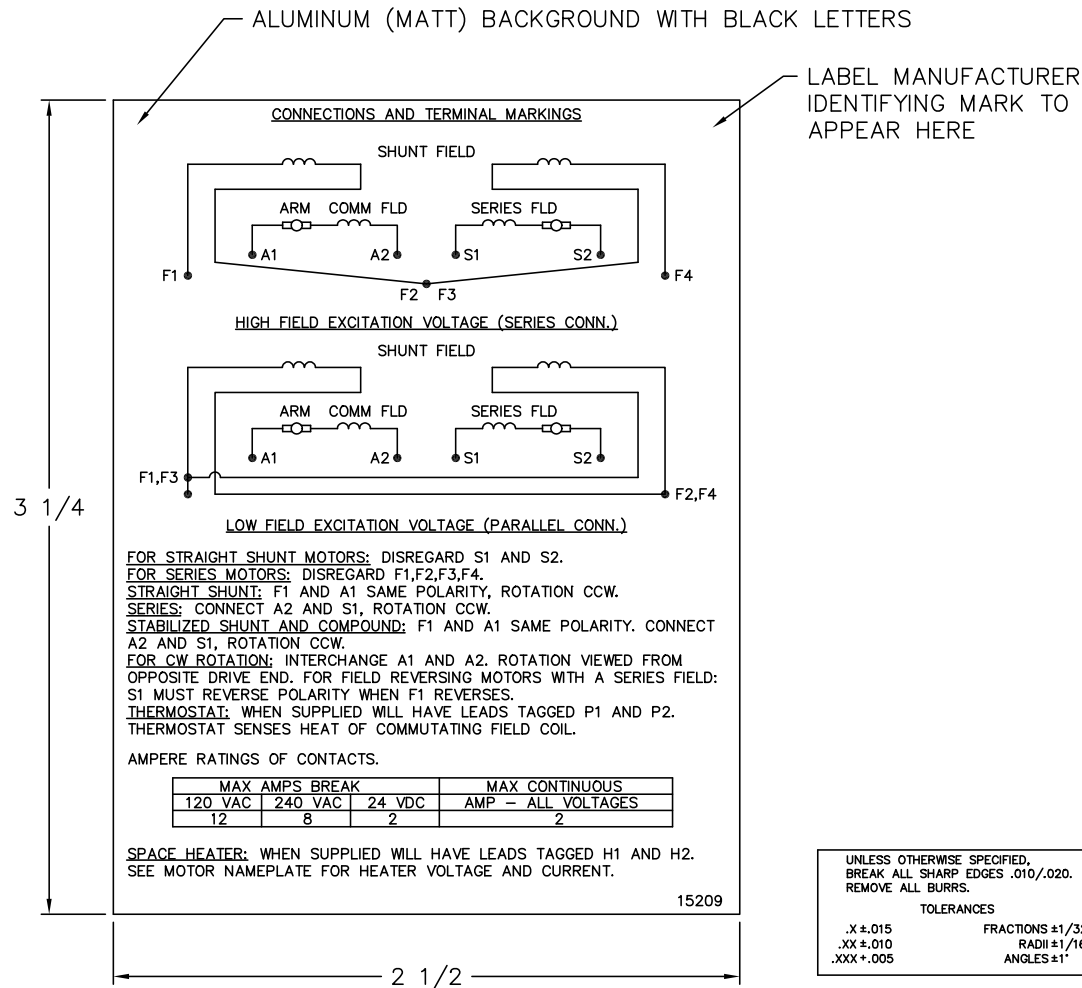
FOR F1 OR F2 CONDUIT BOX LOCATION SEE SALES ORDER

CUSTOMER IS RESPONSIBLE FOR DETERMINING THAT BALDOR'S PRODUCT WILL PERFORM SUITABLY IN THE INTENDED APPLICATION.

REV. DESC: 885-4 RESCALE DRAWING IN BUS		
REV. LTR: C	VERSION: 02	TDR: 000000763880
FILE: \RGG\00019\544	REVISED: 09:37:55 09/07/2012	BY: RCGWT
MTL: -		

BALDOR
 DIM SHEET
 SH 1 of 1

15209



NOTE:
 MATERIAL .005 MINIMUM FULL HARD ALUMINUM DULL FINISH.
 TEMP. RANGE -20°C TO +125°C MAXIMUM.
 FOR INDOOR AND OUTDOOR MOUNTING BACK.
 METAL, PRESSURE SENSITIVE BACK. MUST MEET CSA STANDARD.
 THE CSA IDENTIFYING MARK OF THE LABEL MANUFACTURER MUST APPEAR IN THE UPPER RIGHT HAND CORNER AS INDICATED.

MATL: NOTED	
REV: G	CHANGE ALL "NAMEPLATE" TEXT TO "LABEL"
60Z91	SCALE: - BY: BKW REVISED: 02/19/97
	FILE: CHB00002485 TDR: 0115147

BALDOR ELECTRIC Co.

LABEL, CONNECTIONS AND TERMINAL MARKINGS DC

15209