

**BALDOR • RELIANCE**

---

# Customer information packet D5510P

10HP, 1750/2300RPM, DC, 259AT, TEFC, F1

## Specifications

Armature Voltage	500 V
Base Speed	1750 rpm
Enclosure	TEFC
Field Voltage	300 V
Output Power	10.000 HP
Agency Approvals	CSA
Ambient Temperature	40 °C
Armature Current	16.3 a
Drip Cover	No Drip Cover
Duty Rating	CONT
Feedback Device	NO FEEDBACK
Field Winding Type	STR. SHUNT
Heater Indicator	No Heater
Insulation Class	F
Lifting Lugs	Standard Lifting Lugs
Motor Standards	NEMA
Mounting Arrangement	F1
Overall Length	36.53 IN
Service Factor	1.00
Shaft Diameter	1.624 IN
Shaft Ground Indicator	No Shaft Grounding
Shaft Slinger Indicator	No Slinger
Thermal Device - Bearing	None

## Part detail

Revision	-
Type	DC
Mech. spec.	
Base	
Status	PRD/A
Elec. spec.	K0040A A
Layout	885-2
Eff. date	12-13-2019
CD Diagram	15209
Poles	00
Leads	
Proprietary	False
Created date	12-12-2019

**Nameplate**

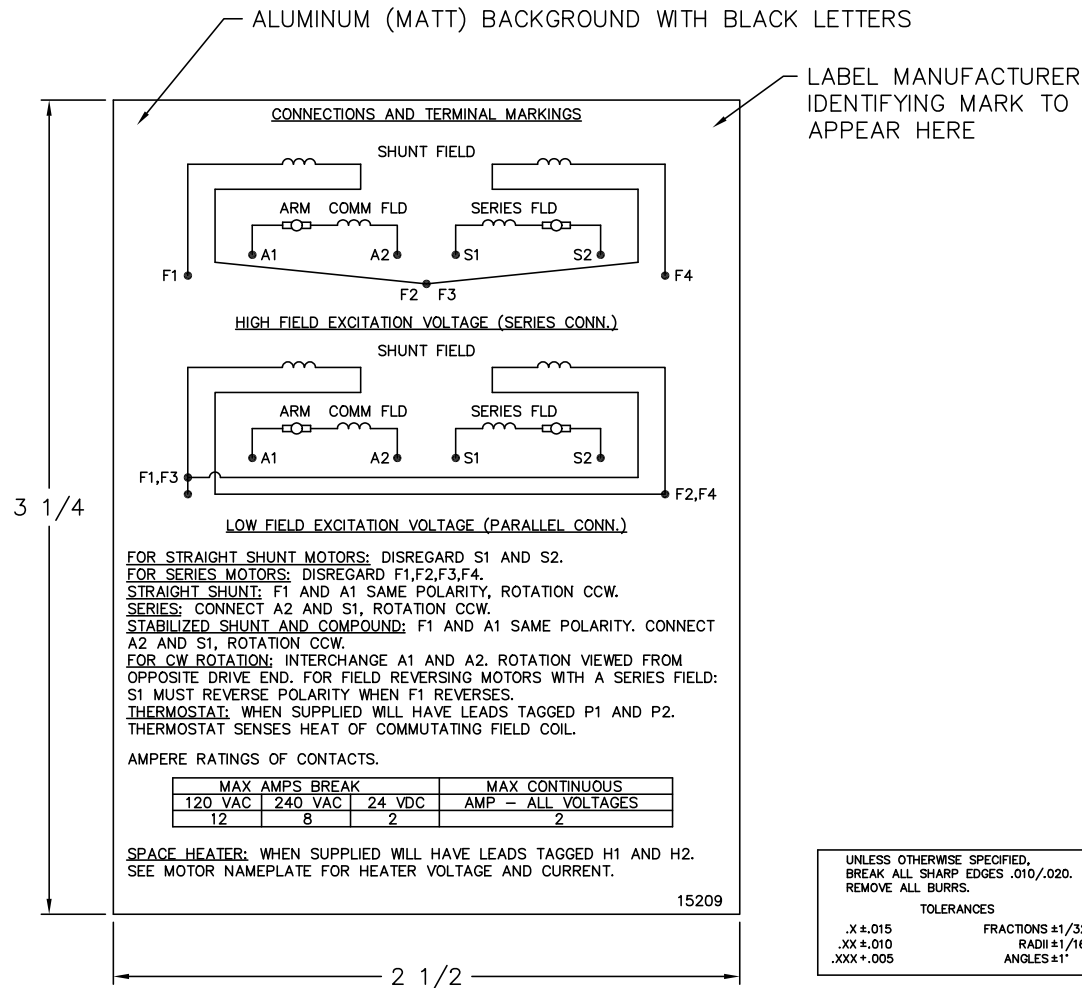
<b>NP1734</b>						
<b>CAT.NO.</b>		<b>MODEL</b>	T25S8008			
<b>HP</b>	10	<b>RPM</b>	1750/2300	<b>FRAME</b>	0259AT	
<b>ARM V</b>	500	<b>ARM A</b>	16.30	<b>WOUND</b>	STR. SHUNT	
<b>FLD V</b>	300/150	<b>FLD A</b>	.89-.49/1.78-.98			
<b>CONN</b>		<b>OHMS</b>	247.9	<b>CL</b>	F	
<b>ENCL</b>	TEFC	<b>DUTY</b>	CONT	<b>MX AMB</b>	40	
<b>P CODE</b>	D	<b>CTSR</b>		<b>SER.F.</b>	1.0	
<b>S/N</b>		<b>E/S</b>	K0040A A			
	-					
<b>O.D.E. BRG.</b>	6207	<b>D.E. BRG.</b>	6209	<b>BRUSH</b>	150986-25-1	<b>QTY</b> 2

**Accessories**

<b>Part number</b>	<b>Description</b>	<b>Multiplier</b>
92EP5000A01	C-FACE CONVERSION KIT FOR STOCK MTR,FR 2	



15209



**NOTE:**  
 MATERIAL .005 MINIMUM FULL HARD ALUMINUM DULL FINISH.  
 TEMP. RANGE -20°C TO +125°C MAXIMUM.  
 FOR INDOOR AND OUTDOOR MOUNTING BACK.  
 METAL, PRESSURE SENSITIVE BACK. MUST MEET CSA STANDARD.  
 THE CSA IDENTIFYING MARK OF THE LABEL MANUFACTURER MUST APPEAR IN THE UPPER RIGHT HAND CORNER AS INDICATED.

MATL: NOTED			
REV:	G	CHANGE ALL "NAMEPLATE" TEXT TO "LABEL"	
60Z91		SCALE: -	BY: BKW
		FILE: CHB00002485	REVISED: 02/19/97
		TDR: 0115147	

**BALDOR ELECTRIC Co.**

LABEL, CONNECTIONS AND TERMINAL MARKINGS DC

15209