

BALDOR • RELIANCE

Customer information packet

D5505P

5HP, 1750/2300RPM, DC, 1810AT, TEFC, TOD

Specifications

Armature Voltage	500 V
Base Speed	1750 rpm
Enclosure	TEFC
Field Voltage	300 V
Frame	1810AT
Output Power	5.000 HP
Agency Approvals	CSA
Ambient Temperature	40 °C
Armature Current	8.3 a
Drip Cover	No Drip Cover
Duty Rating	CONT
Feedback Device	NO FEEDBACK
Field Winding Type	STR. SHUNT
Heater Indicator	No Heater
Insulation Class	F
Lifting Lugs	Standard Lifting Lugs
Motor Standards	NEMA
Mounting Arrangement	F3
Overall Length	21.94 IN
Service Factor	1.00
Shaft Diameter	1.125 IN
Shaft Ground Indicator	No Shaft Grounding
Shaft Slinger Indicator	No Slinger
Thermal Device - Bearing	None

Part detail

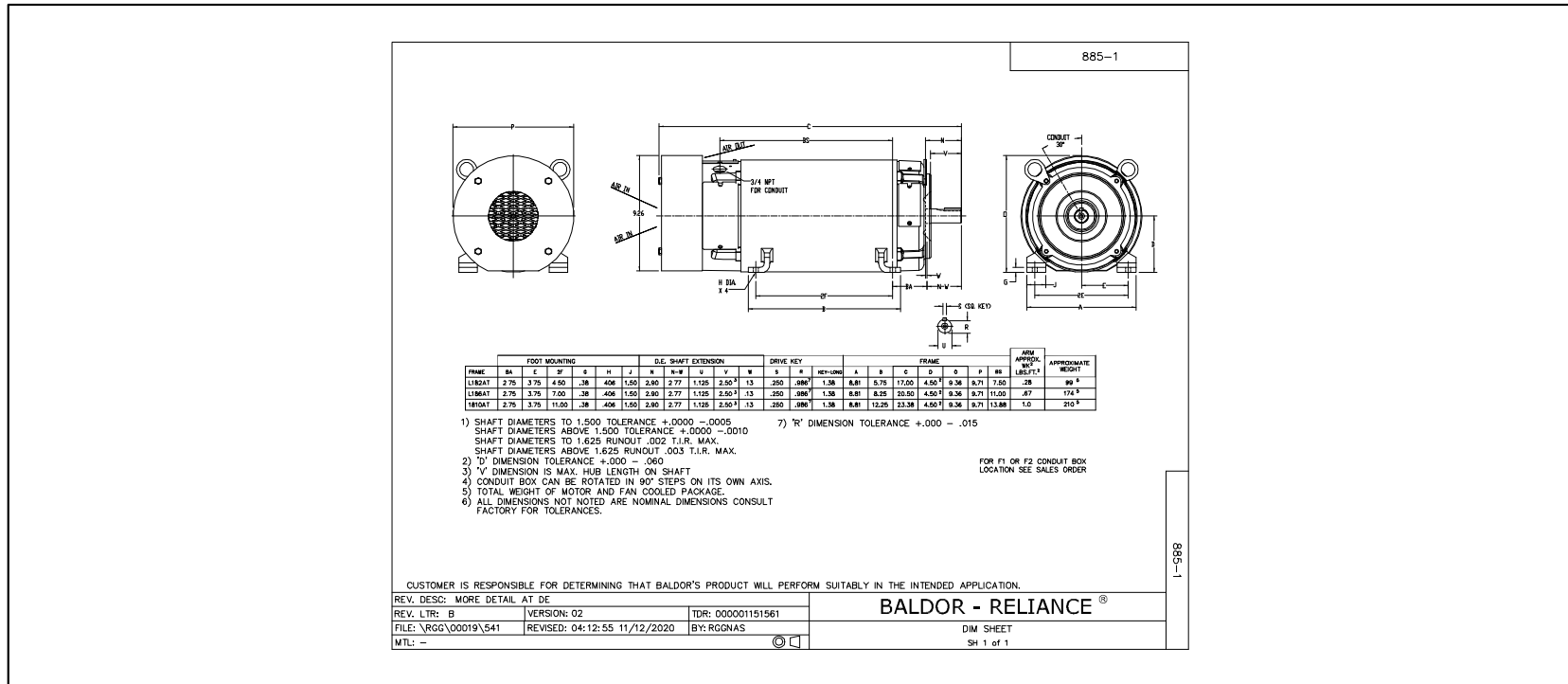
Revision	-
Type	DC
Mech. spec.	
Base	
Status	PRD/A
Elec. spec.	K0014A A
Layout	885-1
Eff. date	12-27-2019
CD Diagram	15209
Poles	00
Leads	
Proprietary	False
Created date	12-26-2019

Nameplate

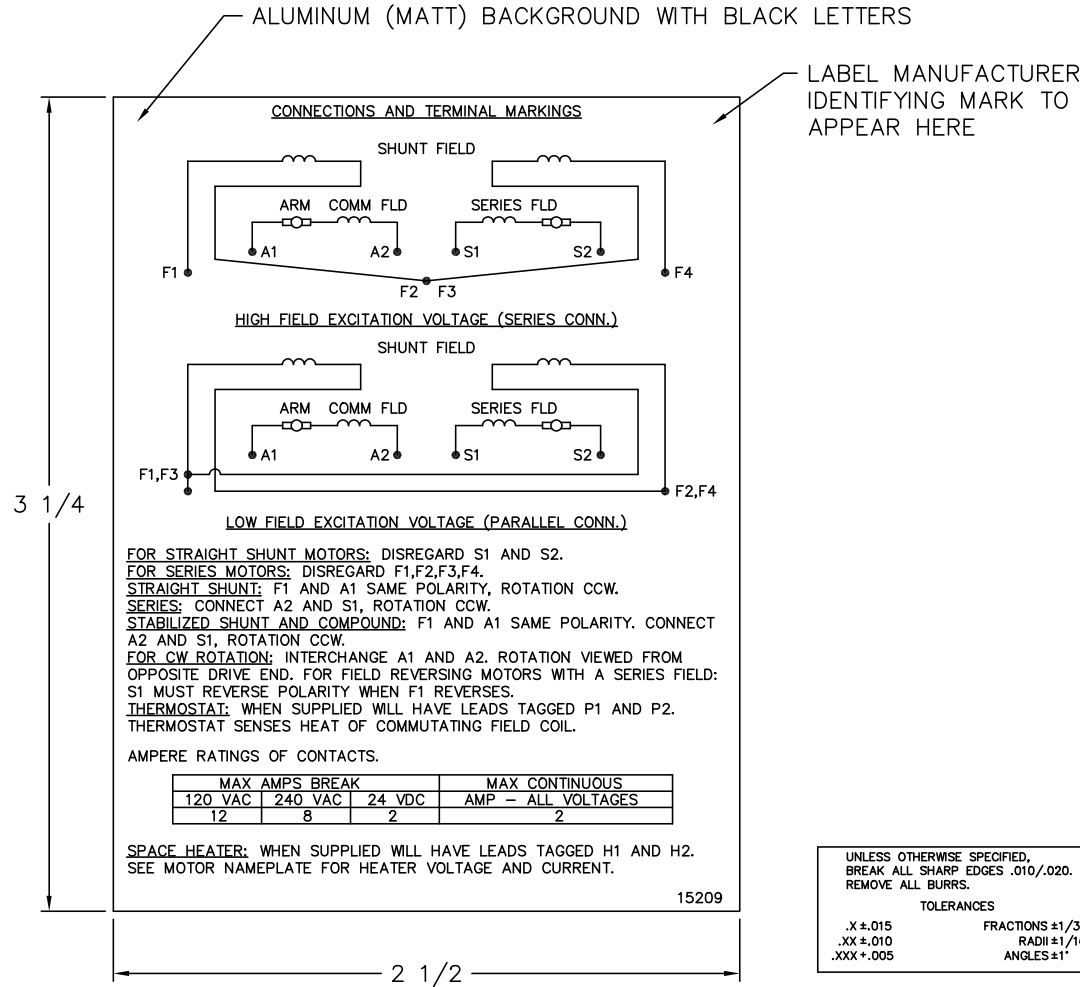
NP1734						
CAT.NO.	D5505P	MODEL	T18S8012			
HP	5	RPM	1750/2300	FRAME	1810AT	
ARM V	500	ARM A	8.30	WOUND	STR. SHUNT	
FLD V	150/300	FLD A	.76-.38/.38-.19			
CONN		OHMS	576.	CL	F	
ENCL	TEFC	DUTY	CONT	MX AMB	40	
P CODE	D	CTSR		SER.F.	1.0	
S/N		E/S	K0014A A			
	-					
O.D.E. BRG.	6205	D.E. BRG.	6206	BRUSH	18044-8	QTY 2

Accessories

Part number	Description	Multiplier
90EP5000A01	C-FACE CONVERSION KIT STOCK MTR,FR 180	P1



15209



NOTE:
 MATERIAL .005 MINIMUM FULL HARD ALUMINUM DULL FINISH.
 TEMP. RANGE -20°C TO +125°C MAXIMUM.
 FOR INDOOR AND OUTDOOR MOUNTING BACK.
 METAL, PRESSURE SENSITIVE BACK. MUST MEET CSA STANDARD.
 THE CSA IDENTIFYING MARK OF THE LABEL MANUFACTURER MUST APPEAR IN THE UPPER RIGHT HAND CORNER AS INDICATED.

MATL: NOTED	
REV: G	CHANGE ALL "NAMEPLATE" TEXT TO "LABEL"
60Z91	SCALE: - BY: BKW REVISED: 02/19/97 FILE: CHB00002485 TDR: 0115147

BALDOR ELECTRIC Co.

LABEL, CONNECTIONS AND TERMINAL MARKINGS DC

15209