

ABB BALDOR RELIANCE III

Customer information packet

D51300R-BV

300HP, 1150RPM, DC, 4013ATZ, DPG-FV,

Copyright © All product information within this document is subject to ABB Motors and Mechanical Inc. copyright © protection, unless otherwise noted.

7/8/2026 1:50:54 PM

Specifications

Enclosure	DP
Frame	LC4013ATZ
Frame Material	Exposed Laminations
Output Power	300.000 HP
Agency Approvals	CCSA US
Ambient Temperature	40 °C
Bearing Grease Type	Polyrex EM (-20F +300F)
Drip Cover	No Drip Cover
Feedback Device	NO FEEDBACK
Field Winding Type	STR. SHUNT
Frame Prefix	LC
Heater Indicator	No Heater
Lifting Lugs	Standard Lifting Lugs
Motor Standards	NEMA
Mounting Arrangement	F2
Overall Length	60.44 IN
Shaft Extension Location	Pulley End
Shaft Ground Indicator	No Shaft Grounding
Shaft Slinger Indicator	No Slinger

Part Detail

Revision	A
Type	DC
Mech. spec.	
Base	
Status	PRD/A
Elec. spec.	G7516A A
Layout	609962-013
Eff. date	08-30-2023
CD Diagram	
Poles	00
Leads	
Proprietary	False
Created date	04-09-2015

Nameplate

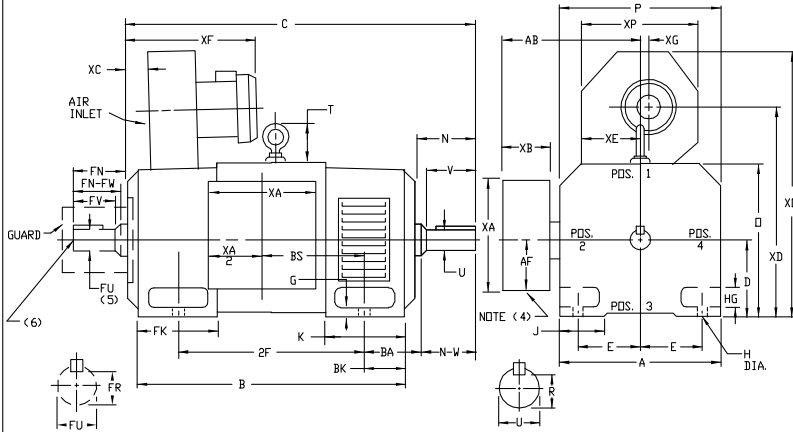
000613006HP					
CAT.NO.	D51300R-BV	SPEC NO.	T40S1320		
FR	LC 4013ATZ	HP	300	DUTY	CONT
ENCL.	DP	RPM	1150/2000	S.F.	1.0
ENCL MOD	FORCE VENT	VOLTS	500	INSUL	F
MAX SAFE SPEED	03000	AMPS	485.00	AMB.	40
	FIELD DATA	SER.NO.			
WINDING	STR. SHUNT	POWER CODE	C		
VOLTS	300	D.E. BRG.	95BC02J30X		
MAX AMPS @ 25 C	13.20	O.D.E. BRG.	95BC02J30X		
HOT AMPS	9.27/4.87	MIN. AMB.	0	TYPE	TR
	BRUSH:419904052AA				

609962-013

INDUSTRIAL DIRECT CURRENT MOTORS AND GENERATORS - RPM III

ENCLOSURE: DRIP-PROOF FULLY-GUARDED COOLING: FORCE VENTILATED WITH INTEGRAL BLOWER AND MOTOR
 MOUNTING: FOOT ACCESSORIES: PROVISION FOR TACHOMETER MOUNTING ONLY WHEN SPECIFIED

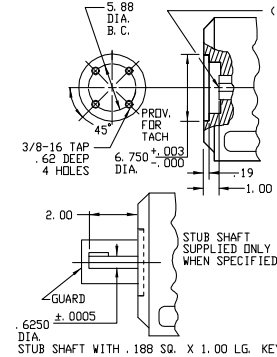
FRAMES C4011ATZ THRU ULC4013ATZ



DIMENSIONS ARE IN INCHES

FRAME	A	B	C	D	E	G	H	HG	J	O	P	T	BA	K	FK	BK	AB	AF	RHK
C4011ATZ-ULC4013ATZ	19.38	10.00	8.00	1.06	1.06	2.82	3.50	19.81	19.56	4.31	6.62	8.75	12.12	5.25	16.12	8.00	6.240		

FRAME	METHOD OF DRIVE	C(7)	B	BS	2F	DRIVE END SHAFT AND KEY					OPPOSITE DRIVE END SHAFT AND KEY					WT. LBS.				
						N	N-W	UK(2)	V	R(3)	SQ	LGTH	FN	FN-FW	FV(2)		FV	FR(3)	SQ	LGTH
C4011ATZ	COUPLED	36.19	42.06	16.00	28.00	7.62	7.25	3.625	7.00	3.134	.875	5.75	7.62	7.25	3.625	7.00	3.134	.875	5.75	2500
UC4011ATZ	BELTED	133.19	42.06	16.00	28.00	8.62	8.25	4.125	8.00	3.563	1.000	6.50	7.62	7.25	3.625	7.00	3.134	.875	5.75	2505
UMC4013ATZ	COUPLED	56.94	46.81	20.75	36.00	7.62	7.25	3.625	7.00	3.134	.875	5.75	7.62	7.25	3.625	7.00	3.134	.875	5.75	2800
UMC4013ATZ	BELTED	57.94	46.81	20.75	36.00	8.62	8.25	4.125	8.00	3.563	1.000	6.50	7.62	7.25	3.625	7.00	3.134	.875	5.75	2805
LC4013ATZ	COUPLED	60.19	50.06	24.00	36.00	7.62	7.25	3.625	7.00	3.134	.875	5.75	7.62	7.25	3.625	7.00	3.134	.875	5.75	3100
ULC4013ATZ	BELTED	61.19	50.06	24.00	36.00	8.62	8.25	4.125	8.00	3.563	1.000	6.50	7.62	7.25	3.625	7.00	3.134	.875	5.75	3105



FRAME	XA	XB	XC	XD	XE	XF	XG	YD	XP
C4011ATZ-ULC4013ATZ	16.00	6.00	6.88	26.00	8.69	23.50	3.38	33.62	13.12

- (1) "D" DIMENSION WILL NOT BE EXCEEDED. SHIMS UP TO .06 INCHES IN THICKNESS ARE USUALLY REQUIRED FOR COUPLED OR GEARED MACHINES.
 - (2) "UF" AND "FUF" VARY -----.000 - .001
 - (3) "R" AND "FR" VARY -----.000 - .015
 - (4) CUSTOMER TO PROVIDE HOLE IN TERMINAL BOX FOR CONDUIT.
 - (5) OPPOSITE DRIVE END SHAFT SUPPLIED ONLY WHEN SPECIFIED.
 - (6) MOTOR SHAFT TAPPED FOR SCREW-IN STUB SHAFT
 - (7) WHEN THE MOTOR APPLICATION DOES NOT REQUIRE THE USE OF DPP, DRIVE END, ADD .25 TO "C" DIA. FOR BRACKET COVER.
- TERMINAL BOX LOCATED ON OPPOSITE SIDE WHEN F=2, W=1, W=4, W=5, W=7, OR C-1 MOUNTING IS SPECIFIED. BOX LOCATED ON TOP WHEN SPECIFIED. BLOWER ASSEMBLY CAN BE LOCATED AT POSITIONS 1, 2, OR 4, EXCEPT MOTOR WEIGHT MAY VARY 15% FOR NON-STANDARD RATINGS AND/OR ACCESSORIES. IF MOUNTING CLEARANCE DETAILS ARE REQUIRED, CONSULT FACTORY.

CUSTOMER IS RESPONSIBLE FOR DETERMINING THAT BALDOR'S PRODUCT WILL PERFORM SUITABLY IN THE INTENDED APPLICATION.

REV. DESC: LOADED TO BUS		
REV. LTR: -	VERSION: 00	TDR: 000000577407
FILE: \RGG\00015\600	REVISED: 12:04:54 01/26/2011	BY: CONNAS
MTL: -		

BALDOR

DIMENSION DRAWING, C4011ATZ - ULC4013ATZ, DPP, FOOT MTG.

SH 1 of 1

609962-013