

ABB BALDOR RELIANCE III

Customer information packet D51200R-1BV

MC4013ATZ, 200HP, 1150RPM, 500, 300, , F1

Specifications

Armature Voltage	500 V
Base Speed	1150 rpm
Enclosure	DPG-FV
Field Voltage	300 V
Frame	MC4013ATZ
Output Power	200.000 HP
Ambient Temperature	40 °C
Armature Current	320.0 a
Bearing Grease Type	Polyrex EM (-20F +300F)
Drip Cover	No Drip Cover
Duty Rating	CONT
Feedback Device	NO FEEDBACK
Field Winding Type	STR. SHUNT
Frame Prefix	MC
Heater Indicator	No Heater
Insulation Class	F
IP Rating	IP23
Lifting Lugs	Standard Lifting Lugs
Motor Standards	NEMA
Mounting Arrangement	F1
Service Factor	1.00
Shaft Diameter	3.624 IN
Shaft Ground Indicator	No Shaft Grounding
Shaft Slinger Indicator	No Slinger

Part Detail

Revision	B
Type	DC
Mech. spec.	
Base	
Status	PRD/A
Elec. spec.	G7635D B
Layout	609962-001
Eff. date	08-30-2023
CD Diagram	406770-006
Poles	00
Leads	
Proprietary	False
Created date	01-22-2019

Nameplate

000613006HP					
CAT.NO.	D51200R-1BV	SPEC NO.	D40-A000-0028		
FR	MC4013ATZ	HP	200	DUTY	CONT
ENCL.	DPG-FV	RPM	1150/2000	S.F.	1.00
ENCL MOD		VOLTS	500	INSUL	F
MAX SAFE SPEED	03000	AMPS	320.00	AMB.	40
	FIELD DATA	SER.NO.			
WINDING	STR. SHUNT	POWER CODE	C		
VOLTS	300	D.E. BRG.	95BC02J30X		
MAX AMPS @ 25 C	7.57	O.D.E. BRG.	95BC02J30X		
HOT AMPS	5.70/3.07	MIN. AMB.	0	TYPE	TR
	BRUSH:419904052AA				

609962-001

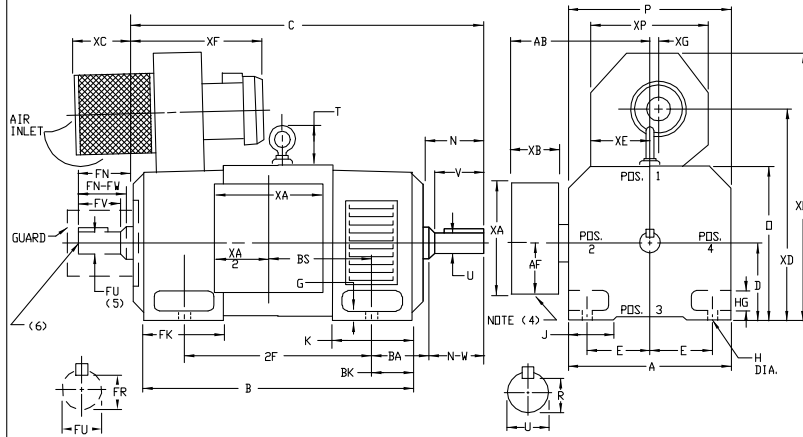
INDUSTRIAL DIRECT CURRENT MOTORS AND GENERATORS - RPM III

ENCLOSURE: DRIP-PROOF FULLY-GUARDED,
SPLASHPROOF
MOUNTING: FOOT

COOLING: FORCE VENTILATED
WITH INTEGRAL
BLOWER AND MOTOR
AIR FILTERED

ACCESSORIES: PROVISION FOR
TACHOMETER MOUNTING
ONLY WHEN SPECIFIED

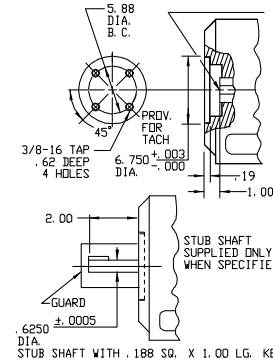
FRAMES C4011ATZ THRU ULC4013ATZ



DIMENSIONS ARE IN INCHES

FRAME	A	DK(1)	E	G	H	HG	J	Q	P	T	BA	K	FK	BK	AB	AF	RH(6)
C4011ATZ-ULC4013ATZ	19.38	10.00	8.00	1.06	1.06	2.82	3.50	19.81	19.56	4.31	6.62	8.75	12.12	5.25	16.12	8.00	6.24

FRAME	METHOD OF DRIVE	CX(7)	B	BS	2F	N	N-W	UC(2)	V	LR(3)	SG	LGTH	FN	FN-FW	FUC(2)	FV	FR(3)	SG	LGTH	WT. LBS.
C4011ATZ	COUPLED	52.10	42.06	16.00	28.00	7.62	7.25	3.625	7.00	3.134	.875	5.75	7.62	7.25	3.625	7.00	3.134	.875	5.75	2500
UC4011ATZ	BELTED	53.10	42.06	16.00	28.00	8.62	8.25	4.125	8.00	3.563	1.000	6.50	7.62	7.25	3.625	7.00	3.134	.875	5.75	2505
MC4013ATZ	COUPLED	56.82	46.81	20.75	36.00	7.62	7.25	3.625	7.00	3.134	.875	5.75	7.62	7.25	3.625	7.00	3.134	.875	5.75	2800
UMC4013ATZ	BELTED	57.82	46.81	20.75	36.00	8.62	8.25	4.125	8.00	3.563	1.000	6.50	7.62	7.25	3.625	7.00	3.134	.875	5.75	2805
LC4013ATZ	COUPLED	60.09	50.06	24.00	36.00	7.62	7.25	3.625	7.00	3.134	.875	5.75	7.62	7.25	3.625	7.00	3.134	.875	5.75	3100
ULC4013ATZ	BELTED	61.09	50.06	24.00	36.00	8.62	8.25	4.125	8.00	3.563	1.000	6.50	7.62	7.25	3.625	7.00	3.134	.875	5.75	3105



FRAME	XA	XB	XC	XD	XE	XF	XG	XD	XP
C4011ATZ-ULC4013ATZ	16.00	6.00	4.88	26.00	8.69	23.50	3.38	33.62	15.12

- (1) "D" DIMENSION WILL NOT BE EXCEEDED. SHIMS UP TO .06 INCHES IN THICKNESS ARE USUALLY REQUIRED FOR COUPLED OR GEARED MACHINES.
 - (2) "P" AND "FV" VARY ----+.000 - .001
 - (3) "R" AND "FR" VARY ----+.000 - .015
 - (4) CUSTOMER TO PROVIDE HOLE IN TERMINAL BOX FOR CONDUIT.
 - (5) OPPOSITE DRIVE END SHAFT SUPPLIED ONLY WHEN SPECIFIED.
 - (6) MOTOR SHAFT TAPPED FOR SCREW-IN SHAFT
 - (7) WHEN THE MOTOR APPLICATION DOES NOT REQUIRE THE USE OF OPP. DRIVE END, ADD .25 TO "C" DIM. FOR BRACKET COVER.
- TERMINAL BOX LOCATED ON OPPOSITE SIDE WHEN F-2, W-1, W-4, W-5, W-7, OR C-1 MOUNTING IS SPECIFIED. BOX LOCATED ON TOP WHEN SPECIFIED. BLOWER ASSEMBLY CAN BE LOCATED AT POSITIONS 1, 2, DR 4, EXCEPT BLOWER ASSEMBLY AND TERMINAL BOX CAN NOT BE LOCATED AT THE SAME POSITION. MOTOR WEIGHT MAY VARY 15% FOR NON-STANDARD RATINGS AND/OR ACCESSORIES. IF MOUNTING CLEARANCE DETAILS ARE REQUIRED, CONSULT FACTORY.

609962-001

CUSTOMER IS RESPONSIBLE FOR DETERMINING THAT BALDOR'S PRODUCT WILL PERFORM SUITABLY IN THE INTENDED APPLICATION.

REV. DESC: LOADED TO BUS		
REV. LTR: -	VERSION: 00	TDR: 000000577407
FILE: \RGG\00015\598	REVISED: 12:02:57 01/26/2011	BY: CONNAS
MTL: -		

BALDOR

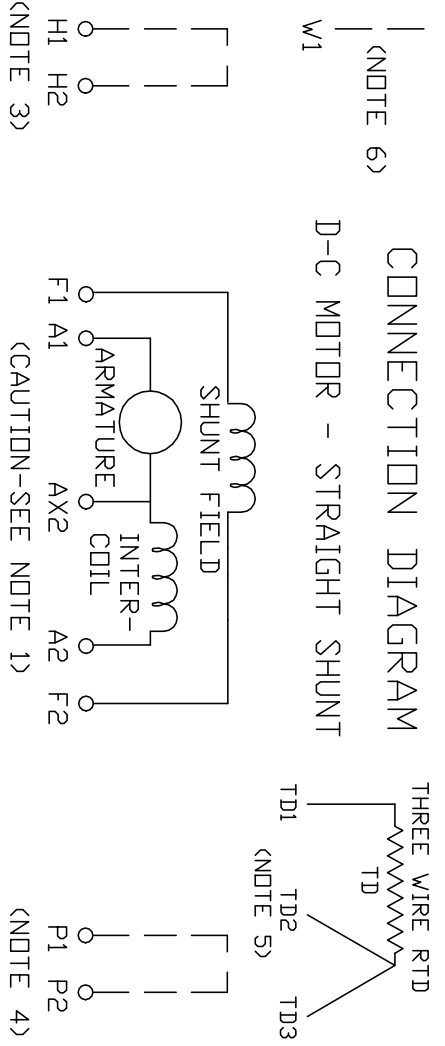
DIMENSION DRAWING, C4011ATZ - ULC4013ATZ, DPP, FOOT MTG.

SH 1 OF 1

406770-006

406770-006

CONNECTION DIAGRAM
D-C MOTOR - STRAIGHT SHUNT



ARMATURE AND FIELD EXTERNAL CONNECTIONS
WARNING- SEE NOTE 7 FOR GROUNDING INSTRUCTIONS



ROTATION FACING COMMUTATOR END

- CAUTION** — ARMATURE MAY HAVE MULTIPLE LEADS. CONNECT ALL LUGS WITH THE SAME MARKING TOGETHER.
- OPTIONAL CONTROL SIGNAL LEAD IS MARKED AX2. ALWAYS TAKE INTERPOLE DROP BETWEEN A2 AND AX2. NOTE: NEMA DESIGNATION FOR AX2 IS LETTER C.
- SPACE HEATERS, WHEN PROVIDED, WILL HAVE LEADS MARKED H1 AND H2, H3, H4, ETC.
- THERMAL PROTECTOR, WHEN PROVIDED, WILL HAVE LEADS MARKED P1 AND P2, P3, P4, ETC.
- WINDING RTD'S, WHEN PROVIDED, WILL HAVE LEADS MARKED TD1, TD2, & TD3.
- BRUSH WEAR SENSOR, WHEN PROVIDED, WILL HAVE LEAD MARKED W1.
- WARNING** — MOTOR MUST BE GROUNDED TO PREVENT SERIOUS INJURIES TO PERSONNEL. GROUND THE MOTOR PER IEC, NATIONAL ELECTRICAL CODE AND ANY APPLICABLE LOCAL ELECTRICAL CODES. A TAPPED HOLE IS PROVIDED IN THE CONDUIT BOX, ON THE FOOT. FRAME BRACE OR OPPOSITE OPPOSITE DRIVE END BRACKET, ADJACENT TO THE TERMINAL BOX FOR FOR MOTOR GROUNDING. GROUND LEAD, WHEN PROVIDED, WILL BE GREEN.

CUSTOMER _____ RELIANCE
ORDER NO. _____ S.D. NO. _____

REV. DESC: UPDATE LOGO AND TITLEBLOCK: LOADED TO BUS		
REV. LTR: -	VERSION: 00	TDR: 000000781086
FILE: \RSN\00026\515	REVISED: 02: 41: 08 02/01/2013	
MTL: -	BY: MGHPC	

BALDOR

D-C MOTOR CONNECTION DIAGRAM, STRAIGHT SHUNT

SH 1 of 1