

BALDOR • RELIANCE

Customer information packet

D5050P-BV

0328AT, 50HP, 1750RPM, 500, 300, DPBV, F1

Specifications

Armature Voltage	500 V
Base Speed	1750 rpm
Enclosure	DPFG
Field Voltage	300 V
Frame	328AT
Output Power	50.000 HP
Agency Approvals	CSA
Ambient Temperature	40 °C
Armature Current	83.7 a
Drip Cover	No Drip Cover
Duty Rating	CONT
Feedback Device	NO FEEDBACK
Field Winding Type	STR. SHUNT
Heater Indicator	No Heater
Insulation Class	F
Lifting Lugs	Standard Lifting Lugs
Motor Standards	NEMA
Mounting Arrangement	F1
Overall Length	35.38 IN
Service Factor	1.00
Shaft Diameter	2.125 IN
Shaft Ground Indicator	No Shaft Grounding
Shaft Slinger Indicator	No Slinger
Thermal Device - Bearing	None

Part detail

Revision	A
Type	DC
Mech. spec.	
Base	
Status	PRD/A
Elec. spec.	K0078A B
Layout	877-1
Eff. date	10-03-2023
CD Diagram	15209
Poles	00
Leads	
Proprietary	False
Created date	12-03-2019

Nameplate

NP1734						
CAT.NO.	D5050P-BV	MODEL	T32S8006			
HP	50	RPM	1750/2100	FRAME	0328AT	
ARM V	500	ARM A	83.70	WOUND	STR. SHUNT	
FLD V	300/150	FLD A	2.00-1.41			
CONN		OHMS	96.2	CL	F	
ENCL	DPFG	DUTY	CONT	MX AMB	40	
P CODE	D	CTSR		SER.F.	1.0	
S/N		E/S	K0078A B			
	FLD DATA FOR 300V					
	FIELD VOLTS 150/300					
O.D.E. BRG.	6210	D.E. BRG.	6211	BRUSH	28610-2	QTY 4

Accessories

Part number	Description	Multiplier
D5050P-BV	0328AT,50HP,1750RPM,500,300,DPBV,F1	N2

877-1

1/2-13UNC-2B THD X 1.00 DEEP
4-HOLES EQUALLY SPACED
ON A 7.250 DIA. B.C.

3/8-16 UNC-2B THD'S
.88 DEEP IN SHAFT END

45°

8.498
8.500
DIA.

.40
.19

FC

C

.75 ACCESSORY 'C' FACE

N

U

V

FN

FV

FN

2F

B

BS

2F

B

BA

N-W

W

XL

AF

AB

P

AC

O

D

J

E

2E

A

HOLE FOR
'AA' CONDUIT

STANDARD COMM END
FOR SINGLE SHAFT EXTENSION

1.1245
1.1250
DIA.

.40

.19

ACCESSORY
'C' FACE

FRAME	FOOT MOUNTING						D.E. SHAFT EXTENSION					DRIVE KEY		ACC SHAFT EXTENSION			ACC KEY		FRAME						
	BA	E	2F	G	H	J	N	N-W	U	V	W	KEY-SQ	KEY-LONG	FN	FU	FV	KEY-SQ	KEY-LONG	A	B	C	FC	D	O	P
327AT	5.25	6.25	14.00	.81	.656	3.00	4.40	4.25	2.125	4.00 ³	.15	.500	3.12	3.94	1.875	3.69	.500	2.81	15.88	15.75	33.50	36.71	8.00 ²	15.94	15.88
328AT	5.25	6.25	16.00	.81	.656	3.00	4.40	4.25	2.125	4.00 ³	.15	.500	3.12	3.94	1.875	3.69	.500	2.81	15.88	17.75	35.38	38.58	8.00 ²	15.94	15.88
329AT	5.25	6.25	18.00	.81	.656	3.00	4.40	4.25	2.125	4.00 ³	.15	.500	3.12	3.94	1.875	3.69	.500	2.81	15.88	19.75	37.38	40.58	8.00 ²	15.94	15.88
365AT	5.88	7.00	12.25	.81	.813	3.25	4.94	4.75	2.375	4.50 ³	.19	.625	3.50	4.62	2.125	4.37	.500	3.13	17.75	13.75	33.69	37.56	9.00 ²	17.94	17.88
366AT	5.88	7.00	14.00	.81	.813	3.25	4.94	4.75	2.375	4.50 ³	.19	.625	3.50	4.62	2.125	4.37	.500	3.13	17.75	15.50	35.88	39.75	9.00 ²	17.94	17.88
368AT	5.88	7.00	18.00	.81	.813	3.25	4.94	4.75	2.375	4.50 ³	.19	.625	3.50	4.62	2.125	4.37	.500	3.13	17.75	19.50	38.88	42.75	9.00 ²	17.94	17.88
3610AT	5.88	7.00	22.00	.81	.813	3.25	4.94	4.75	2.375	4.50 ³	.19	.625	3.50	4.62	2.125	4.37	.500	3.13	17.75	23.50	42.20	46.10	9.00 ²	17.94	17.88
3612AT	5.88	7.00	28.00	.81	.813	3.25	4.94	4.75	2.375	4.50 ³	.19	.625	3.50	4.62	2.125	4.37	.500	3.13	17.75	29.50	46.31	49.10	9.00 ²	17.94	17.88

FRAME	CONDUIT BOX						ARM APPROX. WK ² LBS.FT. ²	APPROXIMATE WEIGHT	
	AA	AB	AC	AF	BS	XL			
327AT	2	12.94	10.32	5.00	11.81	7.88	5.25	8.45	700 ⁵
328AT	2	12.94	10.32	5.00	13.68	7.88	5.25	9.67	775 ⁵
329AT	2	12.94	10.32	5.00	15.68	7.88	5.25	10.97	884 ⁵
365AT	2 1/2	14.06	11.38	5.00	9.06	7.88	5.25	15.61	765 ⁵
366AT	2 1/2	14.06	11.38	5.00	11.25	7.88	5.25	18.27	875 ⁵
368AT	2 1/2	14.06	11.38	5.00	14.25	7.88	5.25	22.21	1036 ⁵
3610AT	3	16.86	13.09	6.53	18.25	11.63	7.76	28.00	1070 ⁵
3612AT	3	16.86	13.09	6.53	24.25	11.63	7.76	31.60	1136 ⁵

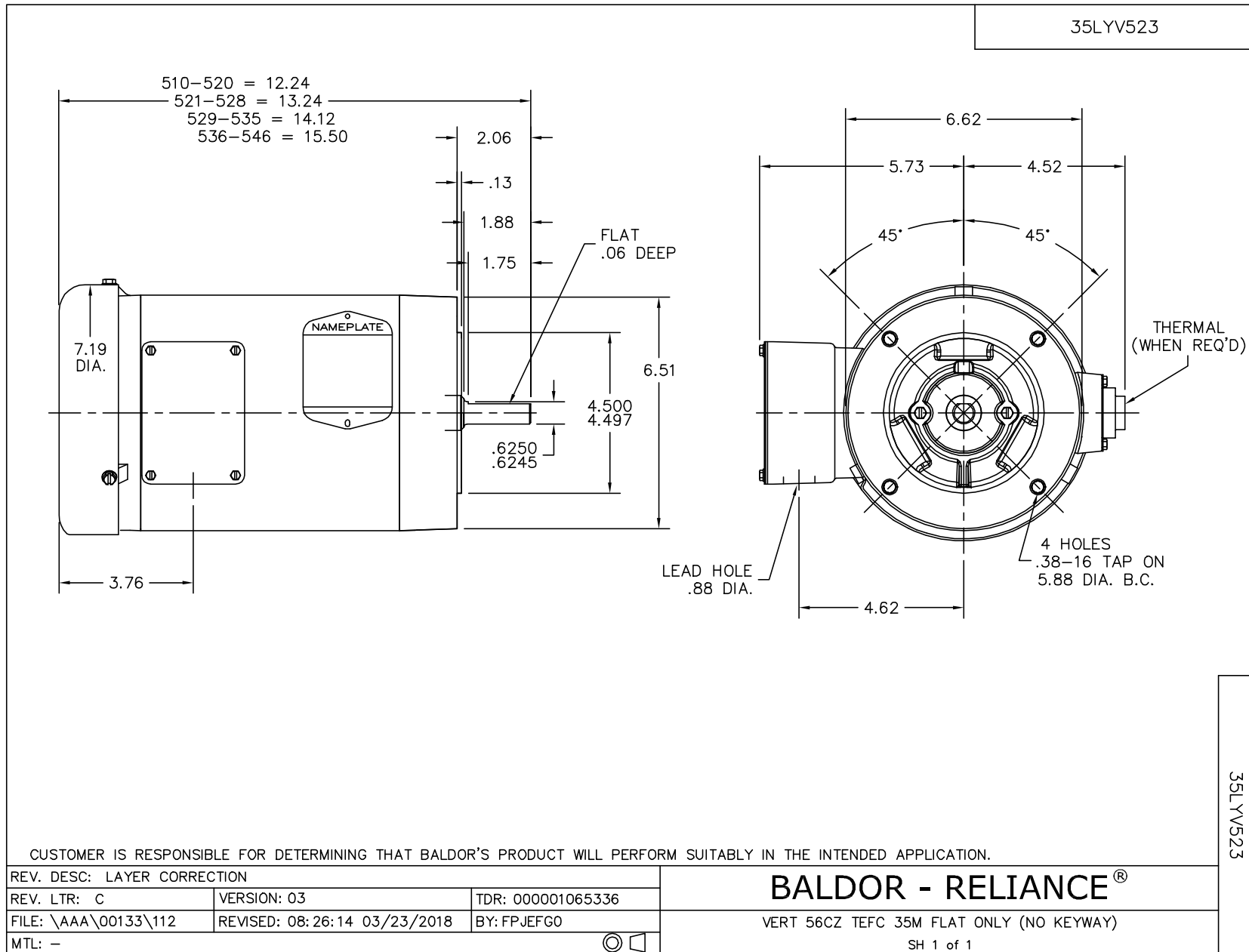
1) SHAFT DIAMETERS TO 1.500 TOLERANCE +.0000 - .0005
SHAFT DIAMETERS ABOVE 1.500 TOLERANCE +.0000 - .0010
SHAFT DIAMETERS TO 1.825 RUNOUT .002 T.I.R. MAX.
SHAFT DIAMETERS ABOVE 1.825 RUNOUT .003 T.I.R. MAX.
2) 'D' DIMENSION TOLERANCE +.000 - .060
3) 'Y' DIMENSION IS MAX. HUB LENGTH ON SHAFT
4) CONDUIT BOX CAN BE ROTATED IN 90° STEPS ON ITS OWN AXIS.
5) TOTAL WEIGHT OF MOTOR.
6) ALL DIMENSIONS NOT NOTED ARE NOMINAL DIMENSIONS CONSULT FACTORY FOR TOLERANCES.

FOR F1 OR F2 CONDUIT BOX LOCATION SEE SALES ORDER

CUSTOMER IS RESPONSIBLE FOR DETERMINING THAT BALDOR'S PRODUCT WILL PERFORM SUITABLY IN THE INTENDED APPLICATION.

REV. DESC: RELOAD TO BUS	VERSION: 02	TDR: 000000773327
FILE: LTR: C	REVISD: 10:43:23 11/09/2012	BY: RCGWT
FILE: \RGG\00019\101		
MTL: -		

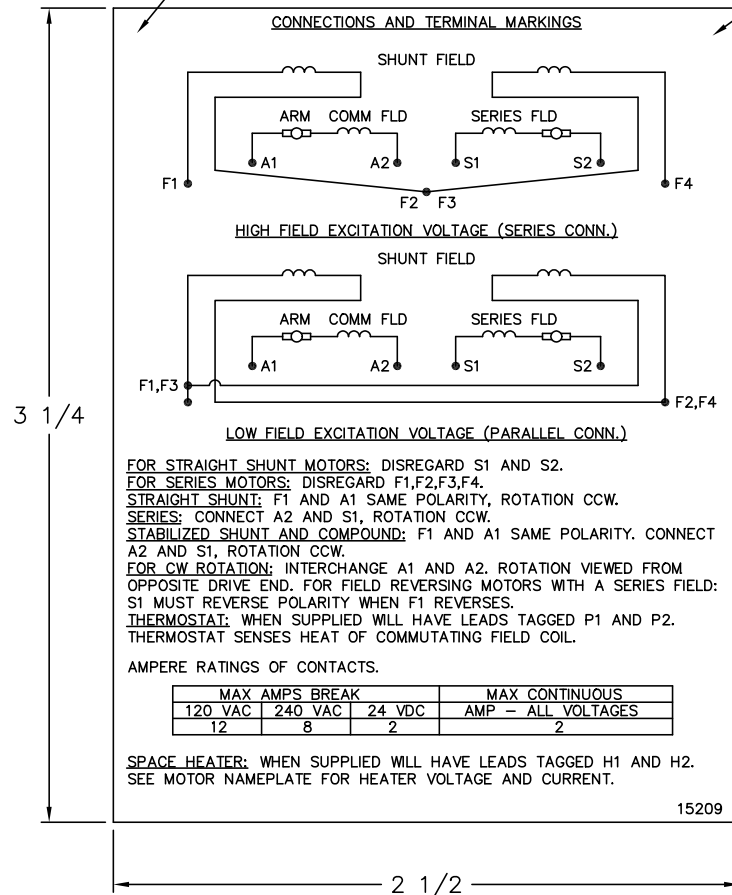
DIM SHEET
SH 1 of 1



15209

ALUMINUM (MATT) BACKGROUND WITH BLACK LETTERS

LABEL MANUFACTURER IDENTIFYING MARK TO APPEAR HERE



FOR STRAIGHT SHUNT MOTORS: DISREGARD S1 AND S2.
 FOR SERIES MOTORS: DISREGARD F1, F2, F3, F4.
 STRAIGHT SHUNT: F1 AND A1 SAME POLARITY, ROTATION CCW.
 SERIES: CONNECT A2 AND S1, ROTATION CCW.
 STABILIZED SHUNT AND COMPOUND: F1 AND A1 SAME POLARITY. CONNECT A2 AND S1, ROTATION CCW.
 FOR CW ROTATION: INTERCHANGE A1 AND A2. ROTATION VIEWED FROM OPPOSITE DRIVE END. FOR FIELD REVERSING MOTORS WITH A SERIES FIELD: S1 MUST REVERSE POLARITY WHEN F1 REVERSES.
 THERMOSTAT: WHEN SUPPLIED WILL HAVE LEADS TAGGED P1 AND P2. THERMOSTAT SENSES HEAT OF COMMUTATING FIELD COIL.

AMPERE RATINGS OF CONTACTS.

MAX AMPS BREAK			MAX CONTINUOUS	
120 VAC	240 VAC	24 VDC	AMP - ALL VOLTAGES	
12	8	2	2	

SPACE HEATER: WHEN SUPPLIED WILL HAVE LEADS TAGGED H1 AND H2. SEE MOTOR NAMEPLATE FOR HEATER VOLTAGE AND CURRENT.

NOTE:
 MATERIAL .005 MINIMUM FULL HARD ALUMINUM DULL FINISH.
 TEMP. RANGE -20°C TO +125°C MAXIMUM.
 FOR INDOOR AND OUTDOOR MOUNTING BACK.
 METAL, PRESSURE SENSITIVE BACK. MUST MEET CSA STANDARD.
 THE CSA IDENTIFYING MARK OF THE LABEL MANUFACTURER MUST APPEAR IN THE UPPER RIGHT HAND CORNER AS INDICATED.

UNLESS OTHERWISE SPECIFIED, BREAK ALL SHARP EDGES .010/.020. REMOVE ALL BURRS.

TOLERANCES

.X ±.015 FRACTIONS ±1/32
 .XX ±.010 RADII ±1/16
 .XXX ±.005 ANGLES ±1°

15209

MATL: NOTED			
REV:	G	CHANGE ALL "NAMEPLATE" TEXT TO "LABEL"	
60Z91		SCALE: -	BY: BKW
		FILE: CHB00002485	REVISED: 02/19/97
		TDR: 0115147	

BALDOR ELECTRIC Co.

LABEL, CONNECTIONS AND TERMINAL MARKINGS DC