

**BALDOR • RELIANCE**

---

# Customer information packet

## D5040P-BV

0328AT, 40HP, 1750RPM, 500, 150, DPBV, F1

## Specifications

Armature Voltage	500 V
Base Speed	1750 rpm
Enclosure	DPFG
Field Voltage	150 V
	300 V
Frame	328AT
Output Power	40.000 HP
Agency Approvals	CSA
Ambient Temperature	40 °C
Armature Current	67.9 a
Drip Cover	No Drip Cover
Duty Rating	CONT
Feedback Device	NO FEEDBACK
Field Winding Type	STR. SHUNT
Heater Indicator	No Heater
Insulation Class	F
Lifting Lugs	Standard Lifting Lugs
Motor Standards	NEMA
Mounting Arrangement	F1
Overall Length	38.58 IN
Service Factor	1.00
Shaft Diameter	2.125 IN
Shaft Ground Indicator	No Shaft Grounding
Shaft Slinger Indicator	No Slinger
Thermal Device - Bearing	None

## Part detail

Revision	-
Type	DC
Mech. spec.	
Base	
Status	PRD/A
Elec. spec.	K0066A A
Layout	877-1
Eff. date	12-02-2019
CD Diagram	15209
Poles	00
Leads	
Proprietary	False
Created date	11-27-2019

**Nameplate**

<b>NP1734</b>						
<b>CAT.NO.</b>	D5040P-BV	<b>MODEL</b>	T32S8004			
<b>HP</b>	40	<b>RPM</b>	1750/2100	<b>FRAME</b>	0328AT	
<b>ARM V</b>	500	<b>ARM A</b>	67.90	<b>WOUND</b>	STR. SHUNT	
<b>FLD V</b>	150/300	<b>FLD A</b>	6.80-4.34/3.40-2.17			
<b>CONN</b>		<b>OHMS</b>		<b>CL</b>	F	
<b>ENCL</b>	DPFG	<b>DUTY</b>	CONT	<b>MX AMB</b>	40	
<b>P CODE</b>	D	<b>CTSR</b>		<b>SER.F.</b>	1.0	
<b>S/N</b>		<b>E/S</b>	K0066A A			
	BRUSH:28610-2					
<b>O.D.E. BRG.</b>	6210	<b>D.E. BRG.</b>	6211	<b>BRUSH</b>	28610-2	<b>QTY</b> 2

**Accessories**

<b>Part number</b>	<b>Description</b>	<b>Multiplier</b>
D5040P-BV	0328AT,40HP,1750RPM,500,150,DPBV,F1	N2

877-1

1/2-13UNC-2B THD X 1.00 DEEP  
4-HOLES EQUALLY SPACED  
ON A 7.250 DIA. B.C.

3/8-16 UNC-2B THD'S  
.88 DEEP IN SHAFT END

45°

1.1245  
1.1250  
DIA.

.40  
.19

ACCESSORY  
'C' FACE

STANDARD COMM END  
FOR SINGLE SHAFT EXTENSION

FC  
C  
.75 ACCESSORY 'C' FACE  
.40  
.19  
N  
U  
V  
FU  
FV  
FN  
AIR IN  
.25  
BS  
2F  
B  
BA  
N-W  
W  
AIR OUT  
HOLE FOR  
'AA' CONDUIT  
P  
AB  
AC  
XL  
AF  
D  
O  
J  
E  
2E  
A

FRAME	FOOT MOUNTING						D.E. SHAFT EXTENSION					DRIVE KEY		ACC SHAFT EXTENSION			ACC KEY		FRAME						
	BA	E	2F	G	H	J	N	N-W	U	V	W	KEY-SQ	KEY-LONG	FN	FU	FV	KEY-SQ	KEY-LONG	A	B	C	FC	D	O	P
327AT	5.25	6.25	14.00	.81	.656	3.00	4.40	4.25	2.125	4.00 <sup>3</sup>	.15	.500	3.12	3.94	1.875	3.69	.500	2.81	15.88	15.75	33.50	36.71	8.00 <sup>2</sup>	15.94	15.88
328AT	5.25	6.25	16.00	.81	.656	3.00	4.40	4.25	2.125	4.00 <sup>3</sup>	.15	.500	3.12	3.94	1.875	3.69	.500	2.81	15.88	17.75	35.38	38.58	8.00 <sup>2</sup>	15.94	15.88
329AT	5.25	6.25	18.00	.81	.656	3.00	4.40	4.25	2.125	4.00 <sup>3</sup>	.15	.500	3.12	3.94	1.875	3.69	.500	2.81	15.88	19.75	37.38	40.58	8.00 <sup>2</sup>	15.94	15.88
365AT	5.88	7.00	12.25	.81	.813	3.25	4.94	4.75	2.375	4.50 <sup>3</sup>	.19	.625	3.50	4.62	2.125	4.37	.500	3.13	17.75	13.75	33.69	37.56	9.00 <sup>2</sup>	17.94	17.88
366AT	5.88	7.00	14.00	.81	.813	3.25	4.94	4.75	2.375	4.50 <sup>3</sup>	.19	.625	3.50	4.62	2.125	4.37	.500	3.13	17.75	15.50	35.88	39.75	9.00 <sup>2</sup>	17.94	17.88
368AT	5.88	7.00	18.00	.81	.813	3.25	4.94	4.75	2.375	4.50 <sup>3</sup>	.19	.625	3.50	4.62	2.125	4.37	.500	3.13	17.75	19.50	38.88	42.75	9.00 <sup>2</sup>	17.94	17.88
3610AT	5.88	7.00	22.00	.81	.813	3.25	4.94	4.75	2.375	4.50 <sup>3</sup>	.19	.625	3.50	4.62	2.125	4.37	.500	3.13	17.75	23.50	42.20	46.10	9.00 <sup>2</sup>	17.94	17.88
3612AT	5.88	7.00	28.00	.81	.813	3.25	4.94	4.75	2.375	4.50 <sup>3</sup>	.19	.625	3.50	4.62	2.125	4.37	.500	3.13	17.75	29.50	46.31	49.10	9.00 <sup>2</sup>	17.94	17.88

FRAME	CONDUIT BOX						ARM APPROX. WK <sup>2</sup> LBS.FT. <sup>2</sup>	APPROXIMATE WEIGHT	
	AA	AB	AC	AF	BS	XL			
327AT	2	12.94	10.32	5.00	11.81	7.88	5.25	8.45	700 <sup>5</sup>
328AT	2	12.94	10.32	5.00	13.68	7.88	5.25	9.67	775 <sup>5</sup>
329AT	2	12.94	10.32	5.00	15.68	7.88	5.25	10.97	884 <sup>5</sup>
365AT	2 1/2	14.06	11.38	5.00	9.06	7.88	5.25	15.61	765 <sup>5</sup>
366AT	2 1/2	14.06	11.38	5.00	11.25	7.88	5.25	18.27	875 <sup>5</sup>
368AT	2 1/2	14.06	11.38	5.00	14.25	7.88	5.25	22.21	1036 <sup>5</sup>
3610AT	3	16.86	13.09	6.53	18.25	11.63	7.76	28.00	1070 <sup>5</sup>
3612AT	3	16.86	13.09	6.53	24.25	11.63	7.76	31.60	1136 <sup>5</sup>

1) SHAFT DIAMETERS TO 1.500 TOLERANCE +.0000 - .0005  
SHAFT DIAMETERS ABOVE 1.500 TOLERANCE +.0000 - .0010  
SHAFT DIAMETERS TO 1.825 RUNOUT .002 T.I.R. MAX.  
SHAFT DIAMETERS ABOVE 1.825 RUNOUT .003 T.I.R. MAX.  
2) 'D' DIMENSION TOLERANCE +.000 - .060  
3) 'Y' DIMENSION IS MAX. HUB LENGTH ON SHAFT  
4) CONDUIT BOX CAN BE ROTATED IN 90° STEPS ON ITS OWN AXIS.  
5) TOTAL WEIGHT OF MOTOR.  
6) ALL DIMENSIONS NOT NOTED ARE NOMINAL DIMENSIONS CONSULT FACTORY FOR TOLERANCES.

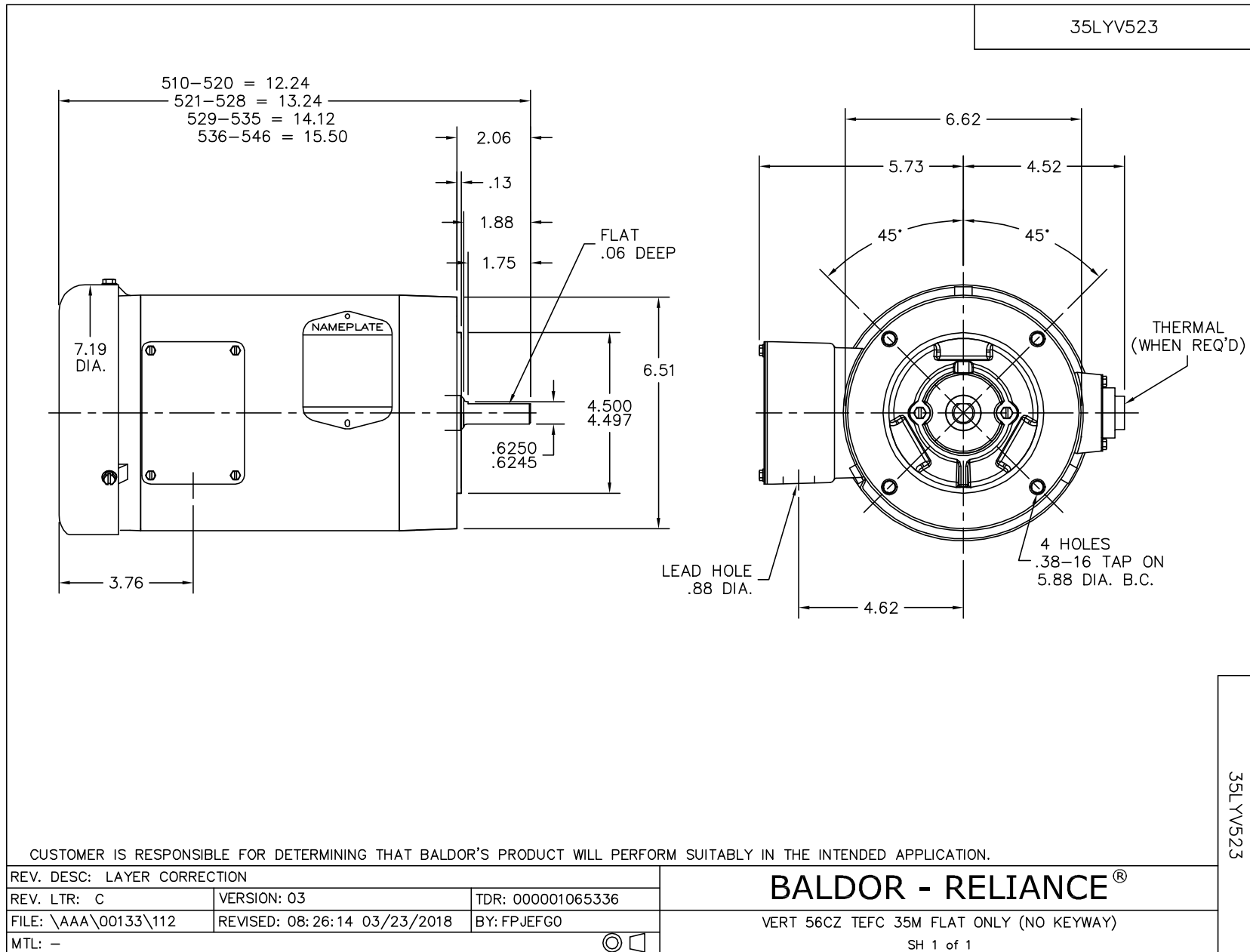
FOR F1 OR F2 CONDUIT BOX LOCATION SEE SALES ORDER

CUSTOMER IS RESPONSIBLE FOR DETERMINING THAT BALDOR'S PRODUCT WILL PERFORM SUITABLY IN THE INTENDED APPLICATION.

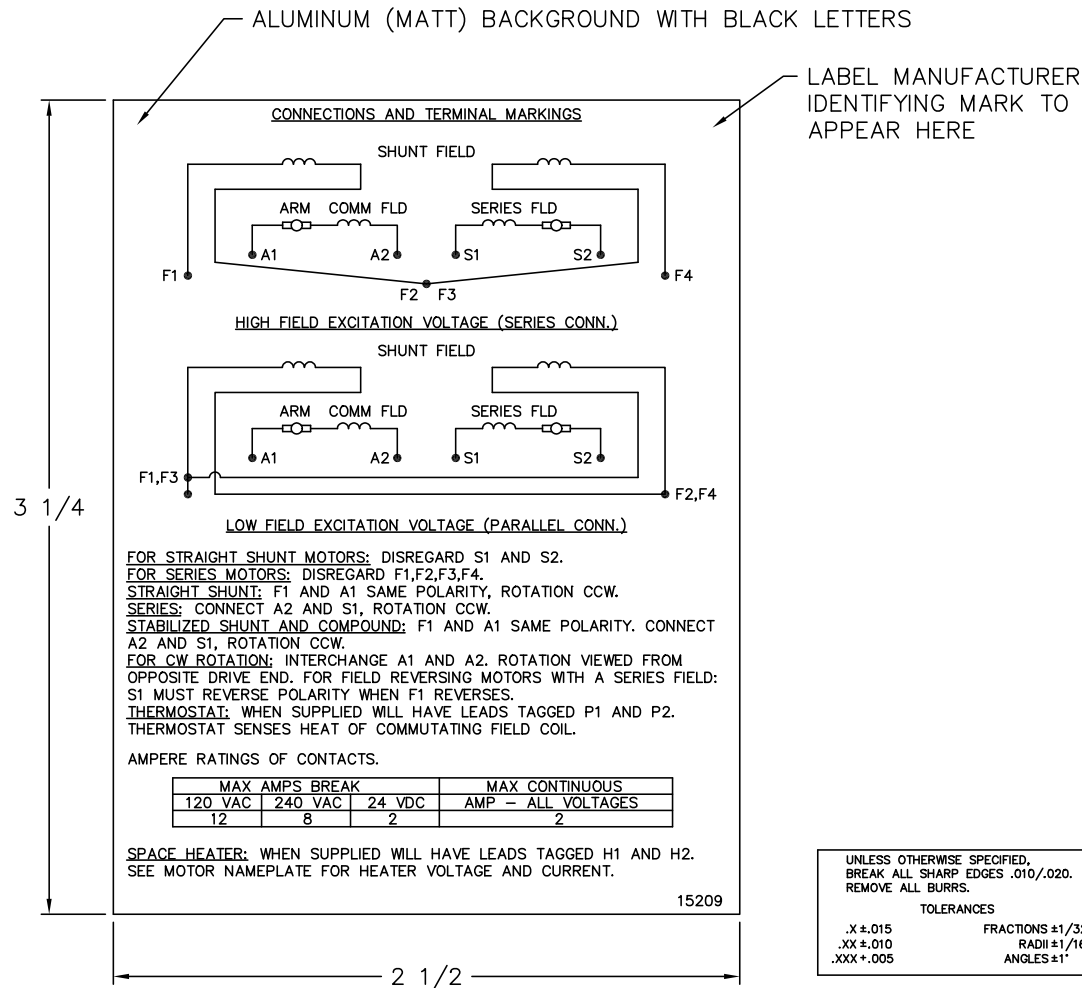
REV. DESC: RELOAD TO BUS	VERSION: 02	TDR: 00000773327
REV. LTR: C	FILE: \RGG\00019\101	BY: RCGWT
MTL: -	REVISED: 10:43:23 11/09/2012	

DIM SHEET  
SH 1 of 1

877-1



15209



**NOTE:**  
 MATERIAL .005 MINIMUM FULL HARD ALUMINUM DULL FINISH.  
 TEMP. RANGE -20°C TO +125°C MAXIMUM.  
 FOR INDOOR AND OUTDOOR MOUNTING BACK.  
 METAL, PRESSURE SENSITIVE BACK. MUST MEET CSA STANDARD.  
 THE CSA IDENTIFYING MARK OF THE LABEL MANUFACTURER MUST APPEAR IN THE UPPER RIGHT HAND CORNER AS INDICATED.

15209

MATL: NOTED			
REV:	G	CHANGE ALL "NAMEPLATE" TEXT TO "LABEL"	
60Z91		SCALE: -	BY: BKW
		FILE: CHB00002485	REVISED: 02/19/97
		TDR: 0115147	

**BALDOR ELECTRIC Co.**

LABEL, CONNECTIONS AND TERMINAL MARKINGS DC