

BALDOR® • RELIANCE™

Customer information packet

D5030P

0288AT, 30HP, 1750RPM, 500, 150, DPGF, F1

Specifications

Armature Voltage	500 V
Base Speed	1750 rpm
Enclosure	DPFG
Field Voltage	150 V
	300 V
Frame	288AT
Output Power	30.000 HP
Agency Approvals	CSA
Ambient Temperature	40 °C
Armature Current	50.0 a
Drip Cover	No Drip Cover
Duty Rating	CONT
Feedback Device	NO FEEDBACK
Field Winding Type	STR. SHUNT
Heater Indicator	No Heater
Insulation Class	F
Lifting Lugs	Standard Lifting Lugs
Motor Standards	NEMA
Mounting Arrangement	F1
Overall Length	32.75 IN
Shaft Diameter	1.875 IN
Shaft Ground Indicator	No Shaft Grounding
Shaft Slinger Indicator	No Slinger
Thermal Device - Bearing	None

Part detail

Revision	-
Type	DC
Mech. spec.	
Base	
Status	PRD/A
Elec. spec.	K0074A A
Layout	876-2
Eff. date	12-16-2019
CD Diagram	15209
Poles	00
Leads	
Proprietary	False
Created date	12-12-2019

Nameplate

NP1734						
CAT.NO.	D5030P	MODEL	T28S8004			
HP	30	RPM	1750/2300	FRAME	0288AT	
ARM V	500	ARM A	50.00	WOUND	STR. SHUNT	
FLD V	150/300	FLD A	4.00-2.42/2.00-1.21			
CONN		OHMS		CL	F	
ENCL	DPFG	DUTY	CONT	MX AMB	40	
P CODE	D	CTSR		SER.F.		
S/N		E/S	K0074A A			
	-					
O.D.E. BRG.	6209	D.E. BRG.	6210	BRUSH	15017-2	QTY 2

Accessories

Part number	Description	Multiplier
93EP5000A02	C-FACE CONVERSION KIT FOR STOCK MTR,FR 2	

876-2

1/2-13UNC-2B THD X 1.00 DEEP
4-HOLES EQUALLY SPACED
ON A 7.250 DIA. B.C.

3/8-16 UNC-2B THD'S
.88 DEEP IN SHAFT END

.40 ACCESSORY 'C' FACE

1.1245
1.1250
DIA.

STANDARD COMM END
FOR SINGLE SHAFT EXTENSION

8.498
8.500
DIA.

FC
C
.75 ACCESSORY 'C' FACE
.40
.19
FU
FV
FN
AIR IN
AIR OUT
BS
2F
W
N-W
N
U
V
BA
B
A
P
AB
AC
XL
AF
HOLE FOR 'AA' CONDUIT
D
O
E
2E
A

(4)H HOLE DIA.
(6)H FOR 287-8AT

2F (287-8AT ONLY)

876-1

FRAME	FOOT MOUNTING							D.E. SHAFT EXTENSION							DRIVE KEY		ACC SHAFT EXTENSION			ACC KEY		FRAME						
	BA	E	2F	G	H	J	N	N-W	U	V	W	KEY-SQ.	KEY-LONG	FN	FU	FV	KEY-SQ.	KEY-LONG	A	B	C	FC	D	O	P			
287AT	4.75	5.50	12.50	.69	.531	2.50	3.91	3.75	1.875	3.50 ³	.16	.500	2.50	3.44	1.625	3.19	.375	2.44	13.81	14.13	31.00	33.71	7.00 ²	13.88	13.75			
287-8AT	4.75	5.50	12.50 & 14.00	.69	.531	2.50	3.91	3.75	1.875	3.50 ³	.16	.500	2.50	3.44	1.625	3.19	.375	2.44	13.81	15.62	31.00	33.71	7.00 ²	13.88	13.75			
288AT	4.75	5.50	14.00	.69	.531	2.50	3.91	3.75	1.875	3.50 ³	.16	.500	2.50	3.44	1.625	3.19	.375	2.44	13.81	15.62	32.75	35.46	7.00 ²	13.88	13.75			
2810AT	4.75	5.50	18.00	.69	.531	2.50	3.91	3.75	1.875	3.50 ³	.16	.500	2.50	3.44	1.625	3.19	.375	2.44	13.81	19.62	36.75	39.46	7.00 ²	13.88	13.75			
2811AT	4.75	5.50	20.00	.69	.531	2.50	3.91	3.75	1.875	3.50 ³	.16	.500	2.50	3.44	1.625	3.19	.375	2.44	13.81	21.62	40.68	43.84	7.00 ²	13.88	13.75			
2813AT	4.75	5.50	25.00	.69	.531	2.50	3.91	3.75	1.875	3.50 ³	.16	.500	2.50	3.44	1.625	3.19	.375	2.44	13.81	26.62	44.62	47.84	7.00 ²	13.88	13.75			

FRAME	CONDUIT BOX							ARM APPROX. WK ² LBS.FT. ²	APPROXIMATE WEIGHT
	AA	AB	AC	AF	BS	XL	XN		
287AT	1 1/4	11.88	9.25	5.00	10.89	7.88	5.25	4.67	506 ⁵
287-8AT	1 1/4	11.88	9.25	5.00	10.89	7.88	5.25	4.67	506 ⁵
288AT	1 1/4	11.88	9.25	5.00	12.64	7.88	5.25	5.36	566 ⁵
2810AT	1 1/4	11.88	9.25	5.00	16.64	7.88	5.25	6.80	726 ⁵
2811AT	1 1/4	11.88	9.25	5.00	19.14	7.88	5.25	7.62	751 ⁵
2813AT	1 1/4	11.88	9.25	5.00	23.64	7.88	5.25	9.40	796 ⁵

1) SHAFT DIAMETERS TO 1.500 TOLERANCE +.0000 - .0005
SHAFT DIAMETERS ABOVE 1.500 TOLERANCE +.0000 - .0010
SHAFT DIAMETERS TO 1.625 RUNOUT .002 T.I.R. MAX.
SHAFT DIAMETERS ABOVE 1.625 RUNOUT .003 T.I.R. MAX.

2) 'D' DIMENSION TOLERANCE +.000 - .060

3) 'V' DIMENSION IS MAX. HUB LENGTH ON SHAFT

4) CONDUIT BOX CAN BE ROTATED IN 90° STEPS ON ITS OWN AXIS.

5) TOTAL WEIGHT OF MOTOR.

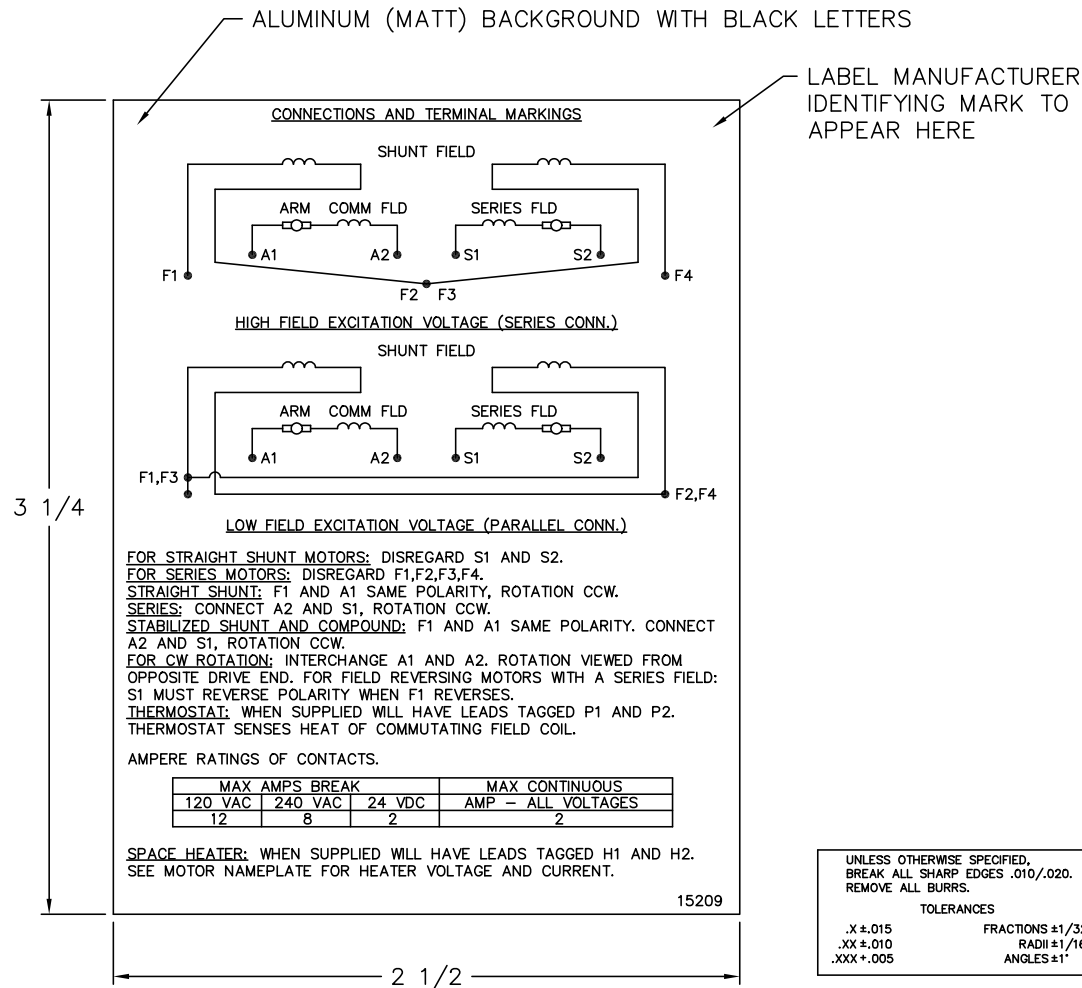
6) ALL DIMENSIONS NOT NOTED ARE NOMINAL DIMENSIONS CONSULT FACTORY FOR TOLERANCES.

FOR F1 OR F2 CONDUIT BOX
LOCATION SEE SALES ORDER

CUSTOMER IS RESPONSIBLE FOR DETERMINING THAT BALDOR'S PRODUCT WILL PERFORM SUITABLY IN THE INTENDED APPLICATION.

REV. DESC: CHANGE TO LAB OFFICE 015			<p>BALDOR</p> <p>DIM SHEET 287AT-2813AT,DPFG SH 1 of 1</p>		
REV. LTR: G	VERSION: 05	TDR: 00000951746			
FILE: \RSN\00031\749	REVISED: 04:29:16 11/03/2015	BY: USPABLO			
MTL: -					

15209



NOTE:
 MATERIAL .005 MINIMUM FULL HARD ALUMINUM DULL FINISH.
 TEMP. RANGE -20°C TO +125°C MAXIMUM.
 FOR INDOOR AND OUTDOOR MOUNTING BACK.
 METAL, PRESSURE SENSITIVE BACK. MUST MEET CSA STANDARD.
 THE CSA IDENTIFYING MARK OF THE LABEL MANUFACTURER MUST APPEAR IN THE UPPER RIGHT HAND CORNER AS INDICATED.

MATL: NOTED			
REV:	G	CHANGE ALL "NAMEPLATE" TEXT TO "LABEL"	
60Z91		SCALE: -	BY: BKW
		FILE: CHB00002485	REVISED: 02/19/97
		TDR: 0115147	

BALDOR ELECTRIC Co.

LABEL, CONNECTIONS AND TERMINAL MARKINGS DC

15209