

ABB BALDOR RELIANCE III



Customer information packet D5007P

7.5HP/1750-2300RPM/DC/NEMA 218AT

Specifications

Armature Voltage	500 V
Base Speed	1750 rpm
Enclosure	DPFG
Field Voltage	150 V
	300 V
Output Power	7.500 HP
Agency Approvals	CSA
Ambient Temperature	40 °C
Armature Current	13.2 a
Drip Cover	No Drip Cover
Duty Rating	CONT
Feedback Device	NO FEEDBACK
Field Winding Type	STR. SHUNT
Heater Indicator	No Heater
Insulation Class	F
Lifting Lugs	Standard Lifting Lugs
Motor Standards	NEMA
Mounting Arrangement	F1
Overall Length	25.93 IN
Service Factor	1.00
Shaft Diameter	1.375 IN
Shaft Ground Indicator	No Shaft Grounding
Shaft Slinger Indicator	No Slinger
Thermal Device - Bearing	None

Part Detail

Revision	-
Type	DC
Mech. spec.	
Base	
Status	PRD/A
Elec. spec.	K0015A A
Layout	876-1
Eff. date	01-06-2020
CD Diagram	15209
Poles	00
Leads	
Proprietary	False
Created date	12-20-2019

Nameplate

NP1734						
CAT.NO.		MODEL	T21S8004			
HP	7.5	RPM	1750/2300	FRAME	0218AT	
ARM V	500	ARM A	13.20	WOUND	STR. SHUNT	
FLD V	150/300	FLD A	1.38-.70/.69-.35			
CONN		OHMS	307.6	CL	F	
ENCL	DPFG	DUTY	CONT	MX AMB	40	
P CODE	D	CTSR		SER.F.	1.0	
S/N		E/S	K0015A A			
	-					
O.D.E. BRG.	6207	D.E. BRG.	6207	BRUSH	150986-21-10	QTY 2

Accessories

Part number	Description	Multiplier
91EP5000A01	C-FACE CONVERSION KIT FOR STOCK MTR,FR 2	P1

876-1

1/2-13UNC-2B THD X 1.00 DEEP
4-HOLES EQUALLY SPACED
ON A 7.250 DIA. B.C.

45°

3/8-16 UNC-2B THD'S
.88 DEEP IN SHAFT END

8.498
8.500
DIA.

.40
.19
ACCESSORY 'C' FACE

1.1245
1.1250
DIA.

STANDARD COMM END
FOR SINGLE SHAFT EXTENSION

FC
C
.75 ACCESSORY 'C' FACE
.40
.19
N
FU
FV
FN
AIR IN
.25
BS
2F
B
BA
N-W
U
V
W
N-W

XL
P
AB
AC
AF
HOLE FOR 'AA' CONDUIT
D
O
J
E
2E
A

FRAME	FOOT MOUNTING					D.E. SHAFT EXTENSION					DRIVE KEY		ACC SHAFT			ACC KEY		FRAME							
	BA	E	2F	G	H	J	N	N-W	U	V	W	KEY-SQ.	KEY-LONG	FN	FU	FV	KEY-SQ.	KEY-LONG	A	B	C	FC	D	O	P
218AT	3.50	4.25	10.00	.50	.406	2.00	3.00	2.75	1.375	2.50 ³	.25	.312	1.75	2.44	1.125	2.19	.250	2.25	10.38	11.00	24.25	25.93	5.25 ²	10.47	10.44
219AT	3.50	4.25	11.00	.50	.406	2.00	3.00	2.75	1.375	2.50 ³	.25	.312	1.75	2.44	1.125	2.19	.250	2.25	10.38	12.00	25.25	26.93	5.25 ²	10.47	10.44
2110AT	3.50	4.25	12.50	.50	.406	2.00	3.00	2.75	1.375	2.50 ³	.25	.312	1.75	2.44	1.125	2.19	.250	2.25	10.38	13.50	26.75	28.43	5.25 ²	10.47	10.44
258AT	4.25	5.00	12.50	.69	.531	2.25	3.44	3.25	1.625	3.00 ³	.19	.375	2.31	3.33	1.375	3.08	.312	3.00	12.38	14.00	27.25	29.84	6.25 ²	12.47	12.44
259AT	4.25	5.00	14.00	.69	.531	2.25	3.44	3.25	1.625	3.00 ³	.19	.375	2.31	3.33	1.375	3.08	.312	3.00	12.38	15.50	28.75	31.34	6.25 ²	12.47	12.44
2510AT	4.25	5.00	16.00	.69	.531	2.25	3.44	3.25	1.625	3.00 ³	.19	.375	2.31	3.33	1.375	3.08	.312	3.00	12.38	17.56	30.75	33.34	6.25 ²	12.47	12.44
2513AT	4.25	5.00	22.00	.69	.531	2.25	3.44	3.25	1.625	3.00 ³	.19	.375	2.31	3.33	1.375	3.08	.312	3.00	12.38	23.50	36.75	39.34	6.25 ²	12.47	12.44

FRAME	CONDUIT BOX						ARM APPROX. WK ² LBS.FT. ²	APPROXIMATE WEIGHT	
	AA	AB	AC	AF	BS	XL			XN
218AT	3/4-1	7.91	6.44	2.44	8.38	3.81	3.12	1.35	242 ⁵
219AT	3/4-1	7.91	6.44	2.44	9.38	3.81	3.12	1.49	260 ⁵
2110AT	3/4-1	7.91	6.44	2.44	10.88	3.81	3.12	1.71	286 ⁵
258AT	1 1/4	9.35	7.72	2.94	9.75	4.94	4.00	2.91	366 ⁵
259AT	1 1/4	9.35	7.72	2.94	11.25	4.94	4.00	3.31	411 ⁵
2510AT	1 1/4	9.35	7.72	2.94	13.25	4.94	4.00	3.80	471 ⁵
2513AT	1 1/4	9.35	7.72	2.94	19.25	4.94	4.00	5.27	532 ⁵

- 1) SHAFT DIAMETERS TO 1.500 TOLERANCE +.0000 - .0005
SHAFT DIAMETERS ABOVE 1.500 TOLERANCE +.0000 - .0010
SHAFT DIAMETERS TO 1.625 RUNOUT .002 T.I.R. MAX.
SHAFT DIAMETERS ABOVE 1.625 RUNOUT .003 T.I.R. MAX.
- 2) 'D' DIMENSION TOLERANCE +.000 - .060
- 3) 'V' DIMENSION IS MAX. HUB LENGTH ON SHAFT
- 4) CONDUIT BOX CAN BE ROTATED IN 90° STEPS ON ITS OWN AXIS.
- 5) TOTAL WEIGHT OF MOTOR.
- 6) ALL DIMENSIONS NOT NOTED ARE NOMINAL DIMENSIONS CONSULT FACTORY FOR TOLERANCES.

FOR F1 OR F2 CONDUIT BOX
LOCATION SEE SALES ORDER

CUSTOMER IS RESPONSIBLE FOR DETERMINING THAT BALDOR'S PRODUCT WILL PERFORM SUITABLY IN THE INTENDED APPLICATION.

REV. DESC: REV. "D" DIM TO +.000 - .060 ONLY		
REV. LTR: B	VERSION: 01	TDR: 000000752566
FILE: \RGG\00019\505	REVISED: 09:35:03 06/20/2012	BY: RGNAS
MTL: -		

DIM SHEET, 218AT-2513AT, DPG, STD
SH 1 of 1

1-9-08

BALDOR ROUND DC ARMATURE INSULATION B/M

FRAME SIZE: **218**
VOLTS: **301-600**

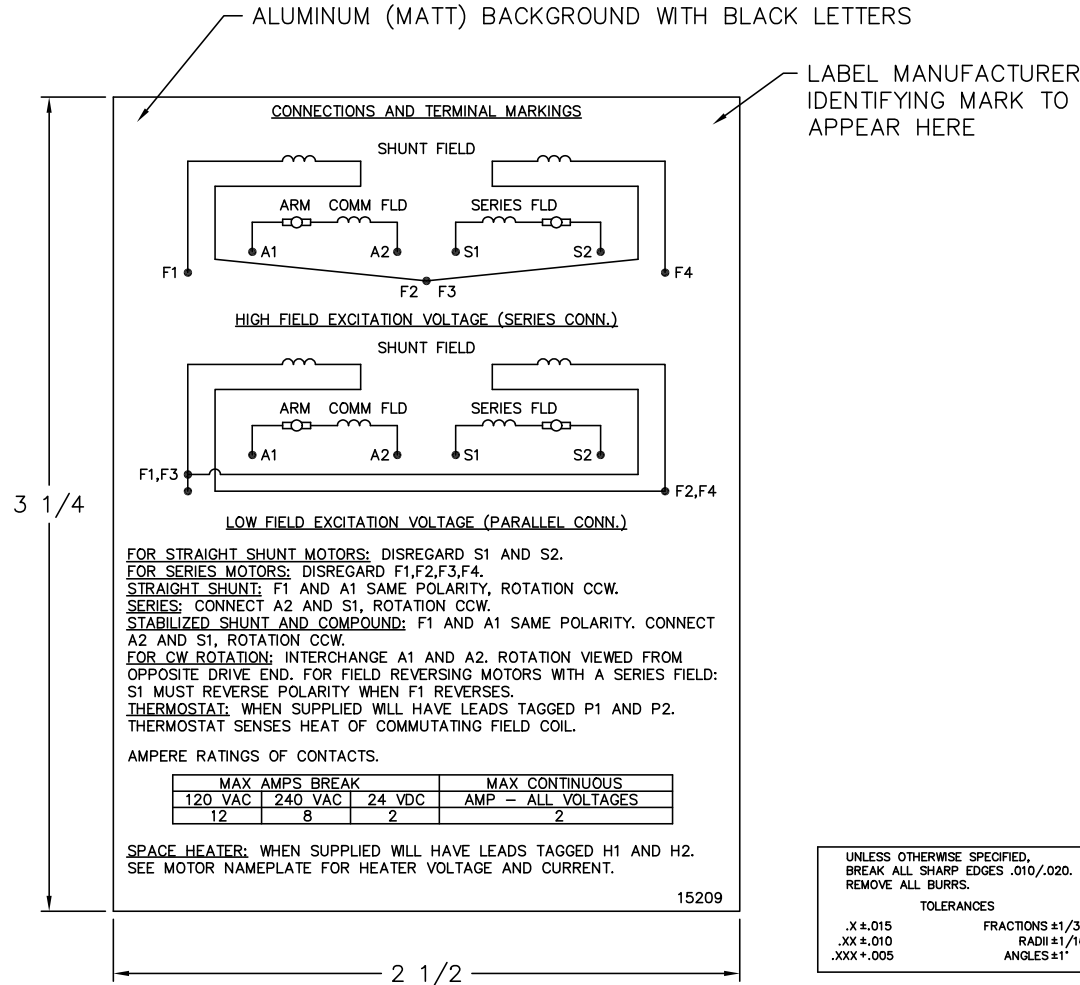
CORE LENGTH: **4.62**
#SLOTS: **24**

DESCRIPTION	#PCS	SIZE (USAGE) OR PART #	PURCHASE INFO	REMARKS
SLOT LINER	24	1.38" X 4.94" (6.82IN2)	612769207AA	4824-10-CX (.015")
TOP STICK	24	5.13" (.43')	4175320005AA	AY482409011 (24-21-15)
MIDSTICKS	24	NA	419910132A	4824-10-CX (.010")
SHAFT INSULATION	2	NA	418020001B	4824-10-CX (.007")
HEAD INSULATION	4	NA	609848005F	2 PCS EACH HEAD 4824-10-FH (.007")
COMMUTATOR INSULATION	NA	8.00"	MH1094A03	"GOLD TAPE"
NOMEX/GLASS CLOTH	NA	12.00"	FH482410150	4824-10FH
SLEEVING	NA	NA	NA	4824-13AW



424503-002JHV

15209



NOTE:
 MATERIAL .005 MINIMUM FULL HARD ALUMINUM DULL FINISH.
 TEMP. RANGE -20°C TO +125°C MAXIMUM.
 FOR INDOOR AND OUTDOOR MOUNTING BACK.
 METAL, PRESSURE SENSITIVE BACK. MUST MEET CSA STANDARD.
 THE CSA IDENTIFYING MARK OF THE LABEL MANUFACTURER MUST APPEAR IN THE UPPER RIGHT HAND CORNER AS INDICATED.

UNLESS OTHERWISE SPECIFIED, BREAK ALL SHARP EDGES .010/.020. REMOVE ALL BURRS.

TOLERANCES

.X ±.015 FRACTIONS ±1/32
 .XX ±.010 RADII ±1/16
 .XXX ±.005 ANGLES ±1°

15209

MATL: NOTED			
REV:	G	CHANGE ALL "NAMEPLATE" TEXT TO "LABEL"	
60Z91		SCALE: -	BY: BKW
		FILE: CHB00002485	REVISED: 02/19/97
		TDR: 0115147	

BALDOR ELECTRIC Co.

LABEL, CONNECTIONS AND TERMINAL MARKINGS DC