

BALDOR • RELIANCE

Customer information packet

D5005P

5HP/1750RPM/D PHASE/DPFG/NEMA186AT

Specifications

Armature Voltage	500 V
Base Speed	1750 rpm
Enclosure	DPFG
Field Voltage	150 V
	300 V
Output Power	5.000 HP
Agency Approvals	CSA
Ambient Temperature	40 °C
Armature Current	8.5 a
Drip Cover	No Drip Cover
Duty Rating	CONT
Feedback Device	NO FEEDBACK
Field Winding Type	STR. SHUNT
Heater Indicator	No Heater
Insulation Class	F
Lifting Lugs	Standard Lifting Lugs
Motor Standards	NEMA
Mounting Arrangement	F3
Overall Length	20.87 IN
Service Factor	1.00
Shaft Diameter	1.125 IN
Shaft Ground Indicator	No Shaft Grounding
Shaft Slinger Indicator	No Slinger
Thermal Device - Bearing	None

Part detail

Revision	-
Type	DC
Mech. spec.	
Base	
Status	PRD/A
Elec. spec.	K0008A A
Layout	875
Eff. date	01-02-2020
CD Diagram	15209
Poles	00
Leads	
Proprietary	False
Created date	12-26-2019

Nameplate

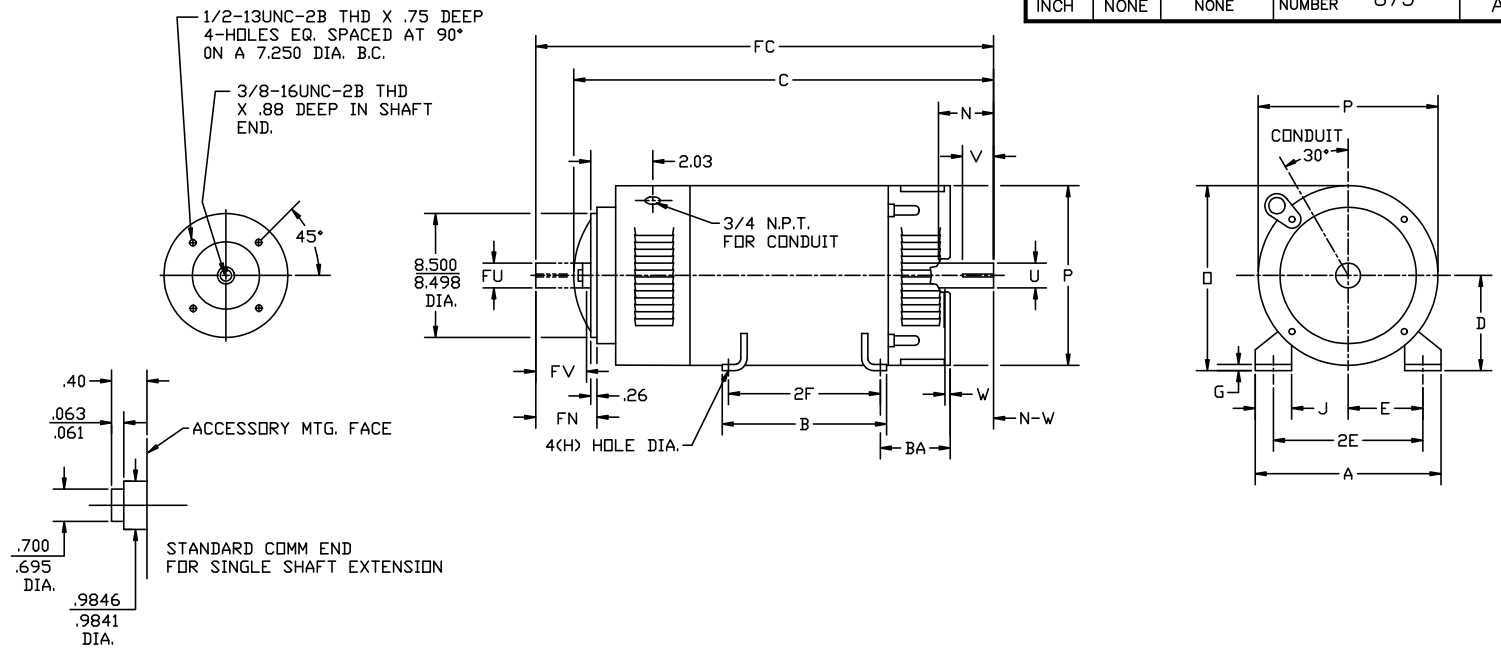
NP1734						
CAT.NO.		MODEL	T18S8006			
HP	5	RPM	1750/2300	FRAME	L 0186AT	
ARM V	500	ARM A	8.50	WOUND	STR. SHUNT	
FLD V	150/300	FLD A	1.34-.62/.67-.31			
CONN		OHMS	312.	CL	F	
ENCL	DPFG	DUTY	CONT	MX AMB	40	
P CODE	D	CTSR		SER.F.	1.0	
S/N		E/S	K0008A A			
	-					
O.D.E. BRG.	6205	D.E. BRG.	6206	BRUSH	18044-1	QTY 2

Accessories

Part number	Description	Multiplier
90EP5000A02	C-FACE CONVERSION KIT FOR STOCK MTR,FR 1	

CUSTOMER NAME		MODEL NO.			MTG.		REMARKS:	
CUSTOMER P.O.		FRAME	R.P.M.	VOLTS	PHASE		INSUL	
CERTIFIED BY		H.P.	TYPE	ENCL	FREQ.		AMB.	

UNITS: INCH	SCALE: NONE	PROPORTION: NONE	PART NUMBER	875	DWG. SIZE	A
-------------	-------------	------------------	-------------	-----	-----------	---



FRAME	FOOT MOUNTING						D.E. SHAFT EXTENSION						DRIVE KEY		ACC SHAFT EXTENSION			ACC KEY		FRAME								ARM APPROX. WK ² LBS.FT. ²	APPROXIMATE WEIGHT
	BA	E	2F	G	H	J	N	N-W	U	V	W	KEY-SQ.	KEY-LONG	FN	FU	FV	KEY-SQ.	KEY-LONG	A	B	C	FC	D	O	P				
L182AT	2.75	3.75	4.50	.38	.406	1.50	2.90	2.77	1.125	2.50 ³	.13	.250	1.38	2.28	.875	2.03	.188	1.38	8.81	5.75	15.81	17.37	4.50 ²	8.94	8.88	.28	84 ⁵		
L186AT	2.75	3.75	7.00	.38	.406	1.50	2.90	2.77	1.125	2.50 ³	.13	.250	1.38	2.28	.875	2.03	.188	1.38	8.81	8.25	19.31	20.87	4.50 ²	8.94	8.88	.67	159 ⁵		
1810AT	2.75	3.75	11.00	.38	.406	1.50	2.90	2.77	1.125	2.50 ³	.13	.250	1.38	2.28	.875	2.03	.188	1.38	8.81	12.25	22.21	23.78	4.50 ²	9.00	9.00	1.0	195 ⁵		

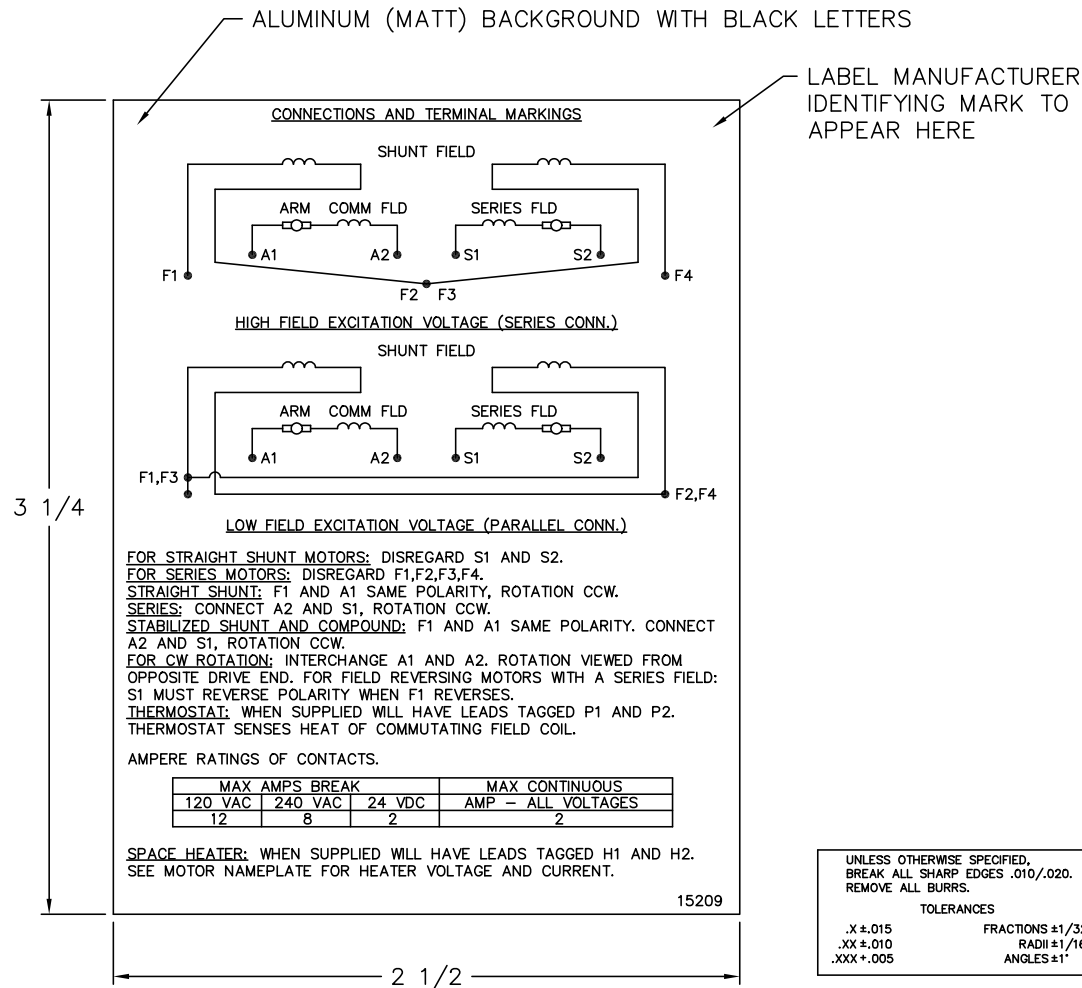
- 1) SHAFT DIAMETERS TO 1.500 TOLERANCE +.0000 - .0005
SHAFT DIAMETERS ABOVE 1.500 TOLERANCE +.0000 - .0010
SHAFT DIAMETERS TO 1.625 RUNOUT .002 T.I.R. MAX.
SHAFT DIAMETERS ABOVE 1.625 RUNOUT .003 T.I.R. MAX.
- 2) 'D' DIMENSION TOLERANCE +.000 - .030
- 3) 'V' DIMENSION IS MAX. HUB LENGTH ON SHAFT
- 4) CONDUIT BOX CAN BE ROTATED IN 90° STEPS ON ITS OWN AXIS.
- 5) TOTAL WEIGHT OF MOTOR.
- 6) ALL DIMENSIONS NOT NOTED ARE NOMINAL DIMENSIONS CONSULT FACTORY FOR TOLERANCES.

FOR F1 OR F2 CONDUIT BOX LOCATION SEE SALES ORDER

DESIGNER CSL 7-19-91	BALDOR
ENGINEER RFI 7-19-91	
ENGINEER DAC 7-19-91	TITLE: DIMENSION SHEET DPFG, STD AT
MANUF. RWT 7-19-91	PART NUMBER 875
	DWG. SIZE A
	REV. A

A	19032	REDRAWN	CSL	7-19-1991
REV.	ECO.	DESCRIPTION	BY	DATE

15209



NOTE:
 MATERIAL .005 MINIMUM FULL HARD ALUMINUM DULL FINISH.
 TEMP. RANGE -20°C TO +125°C MAXIMUM.
 FOR INDOOR AND OUTDOOR MOUNTING BACK.
 METAL, PRESSURE SENSITIVE BACK. MUST MEET CSA STANDARD.
 THE CSA IDENTIFYING MARK OF THE LABEL MANUFACTURER MUST APPEAR IN THE UPPER RIGHT HAND CORNER AS INDICATED.

MATL: NOTED			
REV:	G	CHANGE ALL "NAMEPLATE" TEXT TO "LABEL"	
60Z91		SCALE: -	BY: BKW
		FILE: CHB00002485	REVISED: 02/19/97
		TDR: 0115147	

BALDOR ELECTRIC Co.

LABEL, CONNECTIONS AND TERMINAL MARKINGS DC

15209