

**BALDOR • RELIANCE**

---

# Customer information packet

## D2525P

0328AT, 25HP, 1750RPM, 240, 300, TEFC, F1

**Specifications**

<b>Armature Voltage</b>	240 V
<b>Base Speed</b>	1750 rpm
<b>Enclosure</b>	TEFC
<b>Field Voltage</b>	300 V
<b>Frame</b>	328AT
<b>Output Power</b>	25.000 HP
<b>Agency Approvals</b>	CSA
<b>Ambient Temperature</b>	40 °C
<b>Armature Current</b>	84.8 a
<b>Drip Cover</b>	No Drip Cover
<b>Duty Rating</b>	CONT
<b>Feedback Device</b>	NO FEEDBACK
<b>Field Winding Type</b>	STR. SHUNT
<b>Heater Indicator</b>	No Heater
<b>Insulation Class</b>	F
<b>Lifting Lugs</b>	Standard Lifting Lugs
<b>Motor Standards</b>	NEMA
<b>Mounting Arrangement</b>	F1
<b>Overall Length</b>	42.45 IN
<b>Service Factor</b>	1.00
<b>Shaft Diameter</b>	2.125 IN
<b>Shaft Ground Indicator</b>	No Shaft Grounding
<b>Shaft Slinger Indicator</b>	No Slinger
<b>Thermal Device - Bearing</b>	None

**Part detail**

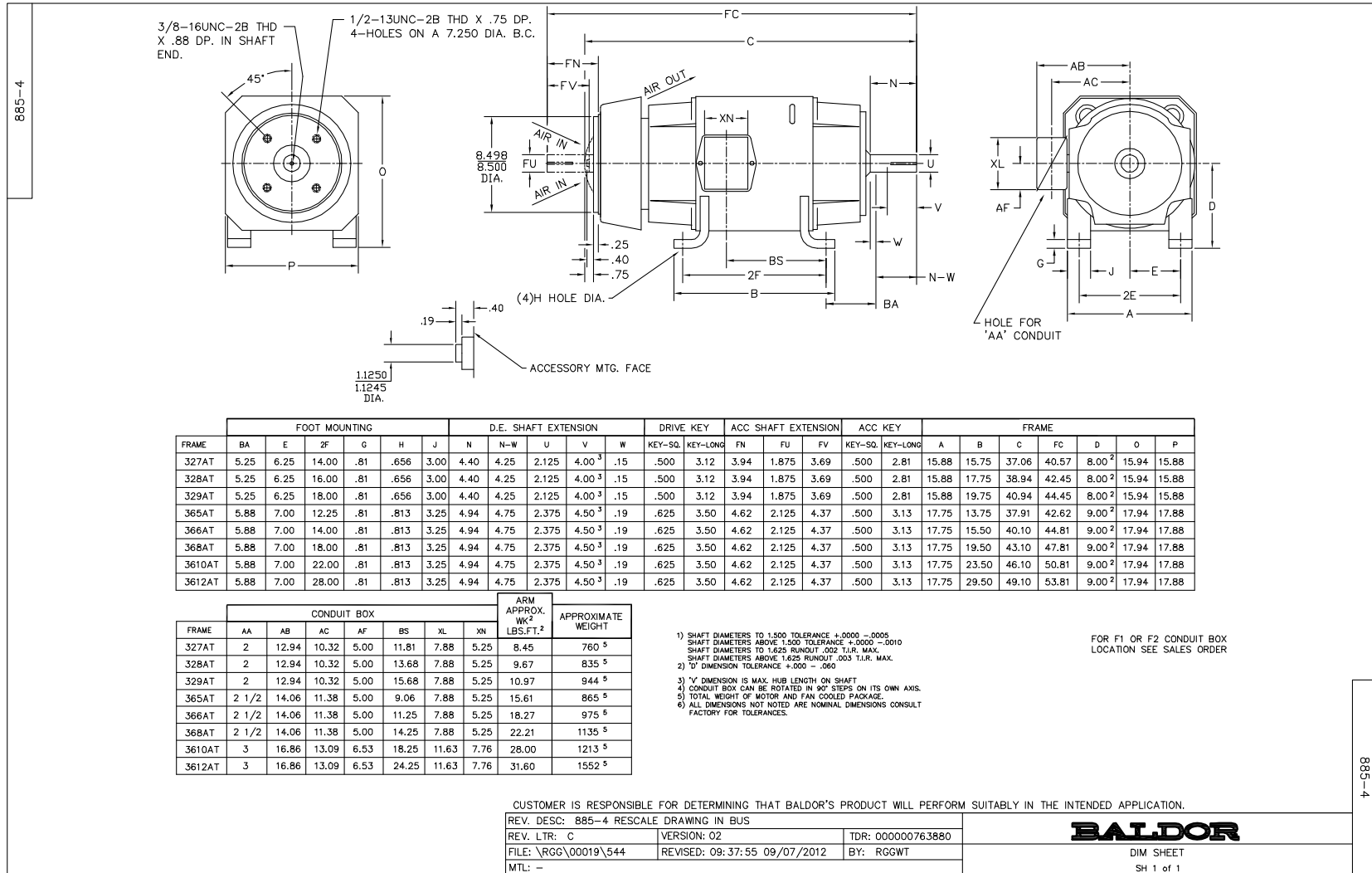
<b>Revision</b>	A
<b>Type</b>	DC
<b>Mech. spec.</b>	
<b>Base</b>	
<b>Status</b>	PRD/A
<b>Elec. spec.</b>	K0082A A
<b>Layout</b>	885-4
<b>Eff. date</b>	10-03-2023
<b>CD Diagram</b>	15209
<b>Poles</b>	00
<b>Leads</b>	
<b>Proprietary</b>	False
<b>Created date</b>	12-18-2019

**Nameplate**

<b>NP1734</b>						
<b>CAT.NO.</b>	D2525P	<b>MODEL</b>	T32S8009			
<b>HP</b>	25	<b>RPM</b>	1750/2300	<b>FRAME</b>	0328AT	
<b>ARM V</b>	240	<b>ARM A</b>	84.80	<b>WOUND</b>	STR. SHUNT	
<b>FLD V</b>	150/300	<b>FLD A</b>	2.22-1.20/1.11-.60			
<b>CONN</b>		<b>OHMS</b>	170.5	<b>CL</b>	F	
<b>ENCL</b>	TEFC	<b>DUTY</b>	CONT	<b>MX AMB</b>	40	
<b>P CODE</b>	D	<b>CTSR</b>		<b>SER.F.</b>	1.0	
<b>S/N</b>		<b>E/S</b>	K0082A A			
	-					
<b>O.D.E. BRG.</b>	6210	<b>D.E. BRG.</b>	6211	<b>BRUSH</b>	28610-1	<b>QTY</b> 4

**Accessories**

<b>Part number</b>	<b>Description</b>	<b>Multiplier</b>
94EP5000A01	C-FACE CONVERSION KIT STOCK MTR,FR 320	



FRAME	FOOT MOUNTING				D.E. SHAFT EXTENSION				DRIVE KEY			ACC SHAFT EXTENSION			ACC KEY		FRAME								
	BA	E	2F	G	H	J	N	N-W	U	V	W	KEY-SQ.	KEY-LONG	FN	FU	FV	KEY-SQ.	KEY-LONG	A	B	C	FC	D	O	P
327AT	5.25	6.25	14.00	.81	.656	3.00	4.40	4.25	2.125	4.00 <sup>3</sup>	.15	.500	3.12	3.94	1.875	3.69	.500	2.81	15.88	15.75	37.06	40.57	8.00 <sup>2</sup>	15.94	15.88
328AT	5.25	6.25	16.00	.81	.656	3.00	4.40	4.25	2.125	4.00 <sup>3</sup>	.15	.500	3.12	3.94	1.875	3.69	.500	2.81	15.88	17.75	38.94	42.45	8.00 <sup>2</sup>	15.94	15.88
329AT	5.25	6.25	18.00	.81	.656	3.00	4.40	4.25	2.125	4.00 <sup>3</sup>	.15	.500	3.12	3.94	1.875	3.69	.500	2.81	15.88	19.75	40.94	44.45	8.00 <sup>2</sup>	15.94	15.88
365AT	5.88	7.00	12.25	.81	.813	3.25	4.94	4.75	2.375	4.50 <sup>3</sup>	.19	.625	3.50	4.62	2.125	4.37	.500	3.13	17.75	13.75	37.91	42.62	9.00 <sup>2</sup>	17.94	17.88
366AT	5.88	7.00	14.00	.81	.813	3.25	4.94	4.75	2.375	4.50 <sup>3</sup>	.19	.625	3.50	4.62	2.125	4.37	.500	3.13	17.75	15.50	40.10	44.81	9.00 <sup>2</sup>	17.94	17.88
368AT	5.88	7.00	18.00	.81	.813	3.25	4.94	4.75	2.375	4.50 <sup>3</sup>	.19	.625	3.50	4.62	2.125	4.37	.500	3.13	17.75	19.50	43.10	47.81	9.00 <sup>2</sup>	17.94	17.88
3610AT	5.88	7.00	22.00	.81	.813	3.25	4.94	4.75	2.375	4.50 <sup>3</sup>	.19	.625	3.50	4.62	2.125	4.37	.500	3.13	17.75	23.50	46.10	50.81	9.00 <sup>2</sup>	17.94	17.88
3612AT	5.88	7.00	28.00	.81	.813	3.25	4.94	4.75	2.375	4.50 <sup>3</sup>	.19	.625	3.50	4.62	2.125	4.37	.500	3.13	17.75	29.50	49.10	53.81	9.00 <sup>2</sup>	17.94	17.88

FRAME	CONDUIT BOX						ARM APPROX. LBS.FT. <sup>2</sup>	APPROXIMATE WEIGHT	
	AA	AB	AC	AF	BS	XL			
327AT	2	12.94	10.32	5.00	11.81	7.88	5.25	8.45	760 <sup>5</sup>
328AT	2	12.94	10.32	5.00	13.68	7.88	5.25	9.67	835 <sup>5</sup>
329AT	2	12.94	10.32	5.00	15.68	7.88	5.25	10.97	944 <sup>5</sup>
365AT	2 1/2	14.06	11.38	5.00	9.06	7.88	5.25	15.61	865 <sup>5</sup>
366AT	2 1/2	14.06	11.38	5.00	11.25	7.88	5.25	18.27	975 <sup>5</sup>
368AT	2 1/2	14.06	11.38	5.00	14.25	7.88	5.25	22.21	1135 <sup>5</sup>
3610AT	3	16.86	13.09	6.53	18.25	11.63	7.76	28.00	1213 <sup>5</sup>
3612AT	3	16.86	13.09	6.53	24.25	11.63	7.76	31.60	1552 <sup>5</sup>

1) SHAFT DIAMETERS TO 1.500 TOLERANCE +.0000 -.0005  
SHAFT DIAMETERS ABOVE 1.500 TOLERANCE +.0000 -.0010  
SHAFT DIAMETERS TO 1.625 RUNOUT .002 T.I.R. MAX.  
SHAFT DIAMETERS ABOVE 1.625 RUNOUT .003 T.I.R. MAX.  
2) 'V' DIMENSION TOLERANCE +.000 -.060  
3) 'V' DIMENSION IS MAX. HUB LENGTH ON SHAFT  
4) CONDUIT BOX CAN BE ROTATED IN 90° STEPS ON ITS OWN AXIS.  
5) TOTAL WEIGHT OF MOTOR AND FAN COOLED PACKAGE.  
6) ALL DIMENSIONS NOT NOTED ARE NOMINAL DIMENSIONS CONSULT FACTORY FOR TOLERANCES.

FOR F1 OR F2 CONDUIT BOX LOCATION SEE SALES ORDER

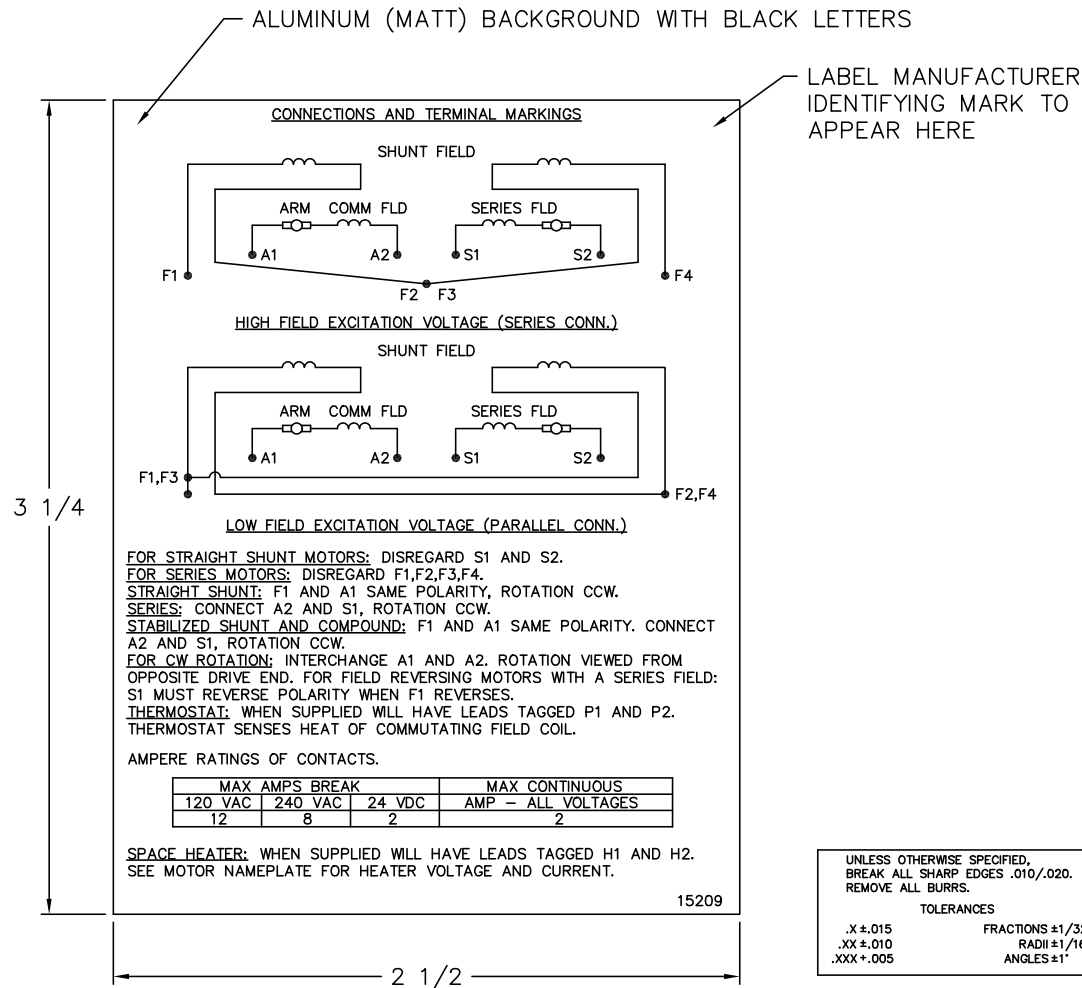
CUSTOMER IS RESPONSIBLE FOR DETERMINING THAT BALDOR'S PRODUCT WILL PERFORM SUITABLY IN THE INTENDED APPLICATION.

REV. DESC: 885-4 RESCALE DRAWING IN BUS		
REV. LTR: C	VERSION: 02	TDR: 000000763880
FILE: \RGG\00019\544	REVISED: 09:37:55 09/07/2012	BY: RCGWT
MTL: -		

**BALDOR**  
DIM SHEET  
SH 1 of 1

885-4

15209



**NOTE:**  
 MATERIAL .005 MINIMUM FULL HARD ALUMINUM DULL FINISH.  
 TEMP. RANGE -20°C TO +125°C MAXIMUM.  
 FOR INDOOR AND OUTDOOR MOUNTING BACK.  
 METAL, PRESSURE SENSITIVE BACK. MUST MEET CSA STANDARD.  
 THE CSA IDENTIFYING MARK OF THE LABEL MANUFACTURER MUST APPEAR IN THE UPPER RIGHT HAND CORNER AS INDICATED.

UNLESS OTHERWISE SPECIFIED, BREAK ALL SHARP EDGES .010/.020. REMOVE ALL BURRS.

**TOLERANCES**

.X ±.015      FRACTIONS ±1/32  
 .XX ±.010      RADII ±1/16  
 .XXX +.005      ANGLES ±1°

15209

MATL: NOTED			
REV:	G	CHANGE ALL "NAMEPLATE" TEXT TO "LABEL"	
60Z91		SCALE: -	BY: BKW
		FILE: CHB00002485	REVISED: 02/19/97
		TDR: 0115147	

**BALDOR ELECTRIC Co.**

LABEL, CONNECTIONS AND TERMINAL MARKINGS DC