

BALDOR • RELIANCE

Customer information packet

D2505P

5HP, 1750/2300RPM, DC, 1810AT, TEFC, F3, N

Specifications

| | |
|--------------------------|-----------------------|
| Armature Voltage | 240 V |
| Base Speed | 1750 rpm |
| Enclosure | TEFC |
| Field Voltage | 300 V |
| Frame | 1810AT |
| Output Power | 5.000 HP |
| Agency Approvals | CSA |
| Ambient Temperature | 40 °C |
| Armature Current | 17.6 a |
| Drip Cover | No Drip Cover |
| Duty Rating | CONT |
| Feedback Device | NO FEEDBACK |
| Field Winding Type | STR. SHUNT |
| Heater Indicator | No Heater |
| Insulation Class | F |
| Lifting Lugs | Standard Lifting Lugs |
| Motor Standards | NEMA |
| Mounting Arrangement | F3 |
| Overall Length | 23.38 IN |
| Service Factor | 1.00 |
| Shaft Diameter | 1.125 IN |
| Shaft Ground Indicator | No Shaft Grounding |
| Shaft Slinger Indicator | No Slinger |
| Thermal Device - Bearing | None |

Part detail

| | |
|--------------|------------|
| Revision | - |
| Type | DC |
| Mech. spec. | |
| Base | |
| Status | PRD/A |
| Elec. spec. | K0013A A |
| Layout | 885-1 |
| Eff. date | 12-27-2019 |
| CD Diagram | 15209 |
| Poles | 00 |
| Leads | |
| Proprietary | False |
| Created date | 12-26-2019 |

Nameplate

| NP1734 | | | | | |
|--------------------|---------------|------------------|-----------|---------------|------------|
| CAT.NO. | D2505P | MODEL | T18S8011 | | |
| HP | 5 | RPM | 1750/2300 | FRAME | 1810AT |
| ARM V | 240 | ARM A | 17.60 | WOUND | STR. SHUNT |
| FLD V | 300 | FLD A | .52-.38 | | |
| CONN | | OHMS | | CL | F |
| ENCL | TEFC | DUTY | CONT | MX AMB | 40 |
| P CODE | D | CTSR | | SER.F. | 1.0 |
| S/N | | E/S | K0013A A | | |
| | BRUSH:18044-4 | | | | |
| O.D.E. BRG. | 6205 | D.E. BRG. | 6206 | BRUSH | QTY |

Accessories

| Part number | Description | Multiplier |
|--------------------|--|-------------------|
| 90EP5000A01 | C-FACE CONVERSION KIT STOCK MTR,FR 180 | P1 |

885-1

| FRAME | FOOT MOUNTING | | | | O.C. SHAFT EXTENSION | | | | | | | DRIVE KEY | | FRAME | | | | | | | APPROX. NET WT. LBS.† | APPROXIMATE WEIGHT | | |
|--------|---------------|------|-------|-----|----------------------|------|------|------|-------|-------------------|----|-----------|------|---------|------|-------|-------|-------------------|------|------|-----------------------|--------------------|-----|---|
| | BA | E | 2" | S | H | J | N | U-W | U | V | W | S | H | KEY-DWG | A | B | C | D | O | P | | | RS | |
| L182AT | 2.75 | 3.75 | 4.50 | .38 | 4.08 | 1.50 | 2.90 | 2.77 | 1.125 | 2.50 ³ | 13 | .250 | .082 | 1.38 | 8.81 | 5.75 | 17.00 | 4.50 ⁴ | 9.36 | 9.71 | 7.50 | .28 | 99 | 4 |
| L18AT | 2.75 | 3.75 | 7.00 | .38 | 4.08 | 1.50 | 2.90 | 2.77 | 1.125 | 2.50 ³ | 13 | .250 | .082 | 1.38 | 8.81 | 8.25 | 20.50 | 4.50 ⁴ | 9.36 | 9.71 | 11.00 | .27 | 174 | 4 |
| T180AT | 2.75 | 3.75 | 11.00 | .38 | 4.08 | 1.50 | 2.90 | 2.77 | 1.125 | 2.50 ³ | 13 | .250 | .082 | 1.38 | 8.81 | 12.25 | 23.38 | 4.50 ⁴ | 9.36 | 9.71 | 13.88 | 1.0 | 210 | 4 |

1) SHAFT DIAMETERS TO 1.500 TOLERANCE +.0000 - .0005
 2) SHAFT DIAMETERS ABOVE 1.500 TOLERANCE +.0000 - .0010
 3) SHAFT DIAMETERS TO 1.625 RUNOUT .002 T.I.R. MAX.
 4) SHAFT DIAMETERS ABOVE 1.625 RUNOUT .003 T.I.R. MAX.
 5) 'D' DIMENSION TOLERANCE +.000 - .060
 6) 'V' DIMENSION IS MAX. HUB LENGTH ON SHAFT
 7) 'R' DIMENSION TOLERANCE +.000 - .015

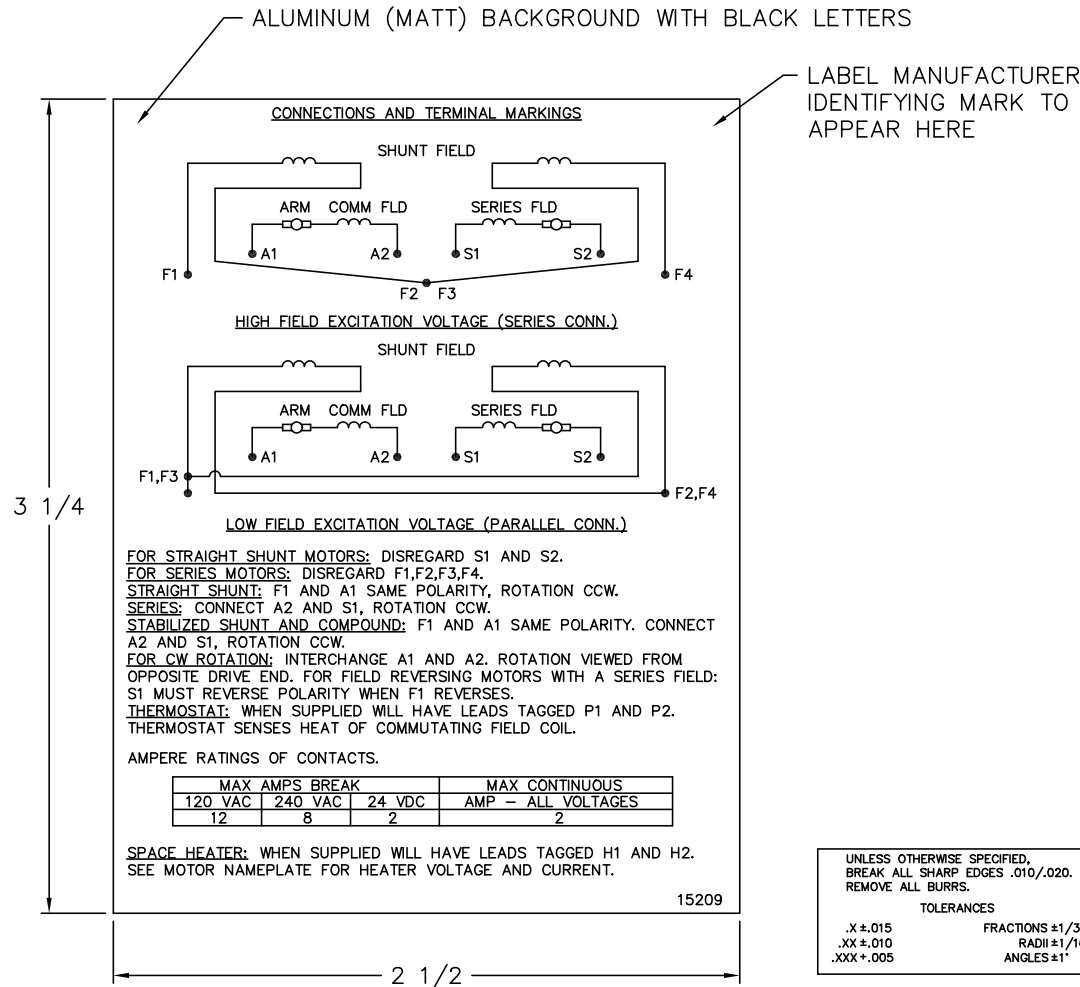
FOR F1 OR F2 CONDUIT BOX LOCATION SEE SALES ORDER

885-1

CUSTOMER IS RESPONSIBLE FOR DETERMINING THAT BALDOR'S PRODUCT WILL PERFORM SUITABLY IN THE INTENDED APPLICATION.

| | | | | |
|------------------------------|------------------------------|-------------------|----------------------------|--|
| REV. DESC: MORE DETAIL AT DE | | | BALDOR - RELIANCE ® | |
| REV. LTR: B | VERSION: 02 | TDR: 000001151561 | | |
| FILE: \RGG\00019_541 | REVISED: 04:12:55 11/12/2020 | BY: RGNAS | DIM SHEET | |
| MTL: - | | | SH 1 of 1 | |

15209



NOTE:
 MATERIAL .005 MINIMUM FULL HARD ALUMINUM DULL FINISH.
 TEMP. RANGE -20°C TO +125°C MAXIMUM.
 FOR INDOOR AND OUTDOOR MOUNTING BACK.
 METAL, PRESSURE SENSITIVE BACK. MUST MEET CSA STANDARD.
 THE CSA IDENTIFYING MARK OF THE LABEL MANUFACTURER MUST APPEAR IN THE UPPER RIGHT HAND CORNER AS INDICATED.

| | | | |
|-------------|---|--|-------------------|
| MATL: NOTED | | | |
| REV: | G | CHANGE ALL "NAMEPLATE" TEXT TO "LABEL" | |
| 60Z91 | | SCALE: - | BY: BKW |
| | | FILE: CHB00002485 | REVISED: 02/19/97 |
| | | TDR: 0115147 | |

BALDOR ELECTRIC Co.

LABEL, CONNECTIONS AND TERMINAL MARKINGS DC

15209