

# **ABB BALDOR RELIANCE III**



## **Customer information packet** D2015P

15HP, 1750/2300RPM, DC, 258AT, DFIG, F1

**Specifications**

<b>Armature Voltage</b>	240 V
<b>Base Speed</b>	1750 rpm
<b>Enclosure</b>	DPFG
<b>Field Voltage</b>	150 V
	300 V
<b>Output Power</b>	15.000 HP
<b>Agency Approvals</b>	CSA
<b>Ambient Temperature</b>	40 °C
<b>Armature Current</b>	55.0 a
<b>Drip Cover</b>	No Drip Cover
<b>Duty Rating</b>	CONT
<b>Feedback Device</b>	NO FEEDBACK
<b>Field Winding Type</b>	STR. SHUNT
<b>Heater Indicator</b>	No Heater
<b>Insulation Class</b>	F
<b>Lifting Lugs</b>	Standard Lifting Lugs
<b>Motor Standards</b>	NEMA
<b>Mounting Arrangement</b>	F1
<b>Overall Length</b>	29.84 IN
<b>Service Factor</b>	1.00
<b>Shaft Diameter</b>	1.624 IN
<b>Shaft Ground Indicator</b>	No Shaft Grounding
<b>Shaft Slinger Indicator</b>	No Slinger
<b>Thermal Device - Bearing</b>	None

**Part Detail**

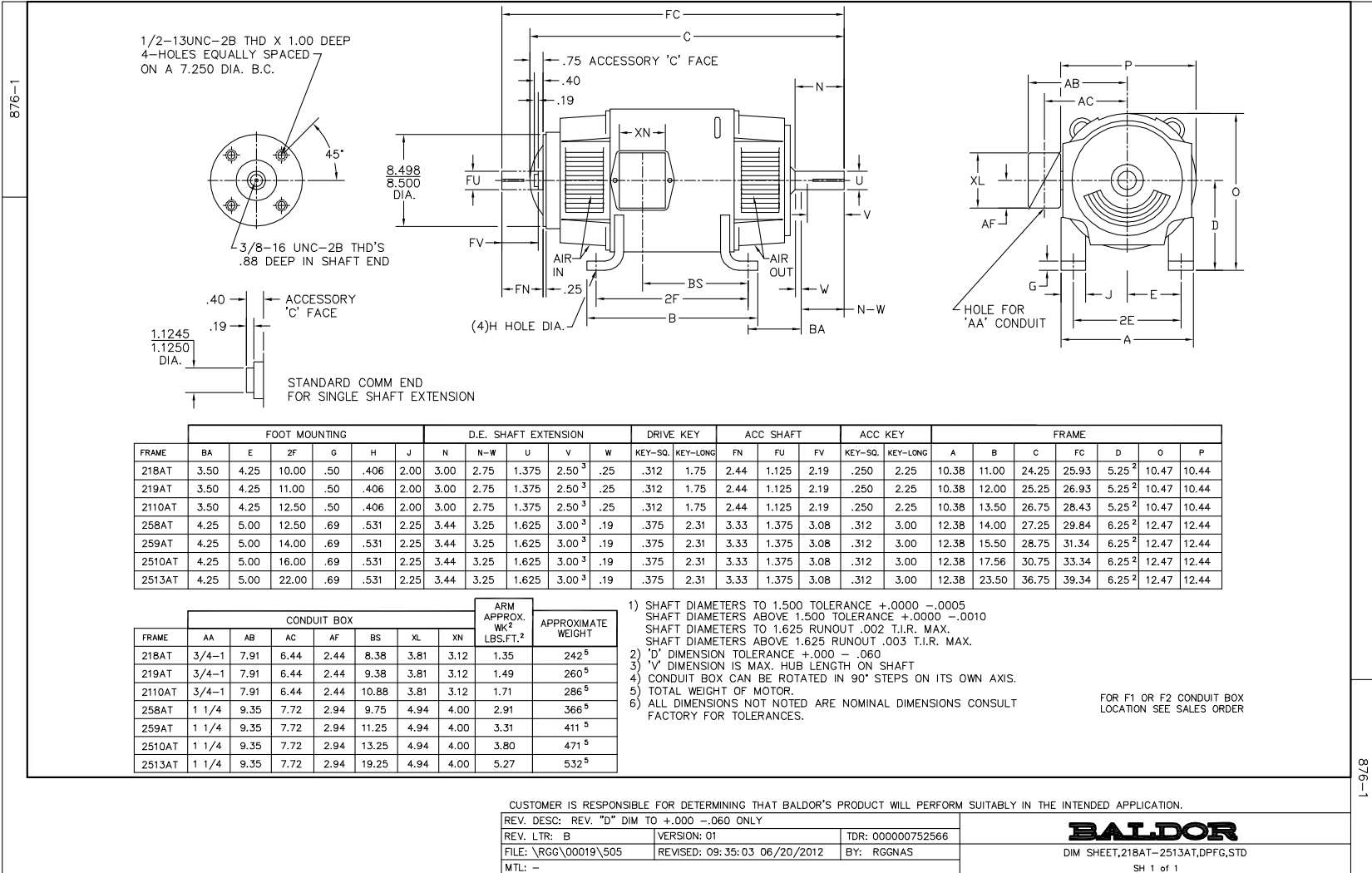
<b>Revision</b>	A
<b>Type</b>	DC
<b>Mech. spec.</b>	
<b>Base</b>	
<b>Status</b>	PRD/A
<b>Elec. spec.</b>	K0035A A
<b>Layout</b>	876-1
<b>Eff. date</b>	02-26-2020
<b>CD Diagram</b>	15209
<b>Poles</b>	00
<b>Leads</b>	
<b>Proprietary</b>	False
<b>Created date</b>	12-12-2019

**Nameplate**

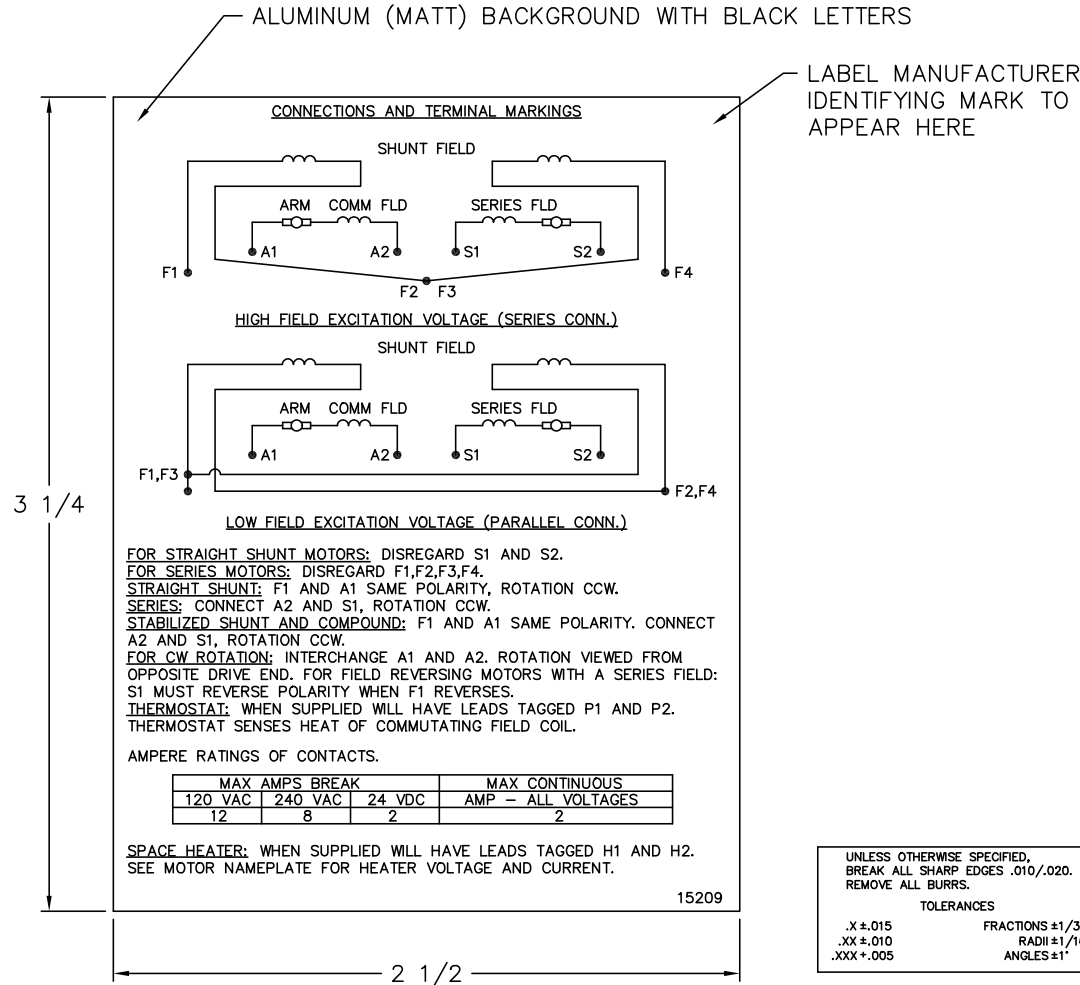
<b>NP1734</b>						
<b>CAT.NO.</b>		<b>MODEL</b>	T25S8002			
<b>HP</b>	15	<b>RPM</b>	1750/2300	<b>FRAME</b>	0258AT	
<b>ARM V</b>	240	<b>ARM A</b>	55.00	<b>WOUND</b>	STR. SHUNT	
<b>FLD V</b>	150/300	<b>FLD A</b>	2.60-1.60/1.30-.80			
<b>CONN</b>		<b>OHMS</b>		<b>CL</b>	F	
<b>ENCL</b>	DPFG	<b>DUTY</b>	CONT	<b>MX AMB</b>	40	
<b>P CODE</b>	D	<b>CTSR</b>		<b>SER.F.</b>	1.0	
<b>S/N</b>		<b>E/S</b>	K0035A A			
	-					
<b>O.D.E. BRG.</b>	6207	<b>D.E. BRG.</b>	6209	<b>BRUSH</b>	150986-25-1	<b>QTY</b> 4

**Accessories**

<b>Part number</b>	<b>Description</b>	<b>Multiplier</b>
92EP5000A01	C-FACE CONVERSION KIT FOR STOCK MTR,FR 2	



15209



**NOTE:**  
 MATERIAL .005 MINIMUM FULL HARD ALUMINUM DULL FINISH.  
 TEMP. RANGE -20°C TO +125°C MAXIMUM.  
 FOR INDOOR AND OUTDOOR MOUNTING BACK.  
 METAL, PRESSURE SENSITIVE BACK. MUST MEET CSA STANDARD.  
 THE CSA IDENTIFYING MARK OF THE LABEL MANUFACTURER MUST APPEAR IN THE UPPER RIGHT HAND CORNER AS INDICATED.

MATL: NOTED			
REV:	G	CHANGE ALL "NAMEPLATE" TEXT TO "LABEL"	
60Z91		SCALE: -	BY: BKW
		FILE: CHB00002485	REVISED: 02/19/97
		TDR: 0115147	

**BALDOR ELECTRIC Co.**

LABEL, CONNECTIONS AND TERMINAL MARKINGS DC

15209