

**BALDOR • RELIANCE**

---

# Customer information packet

## D2005P

5HP, 1750RPM, 240V, DKPG, L186AT

**Specifications**

<b>Armature Voltage</b>	240 V
<b>Base Speed</b>	1750 rpm
<b>Enclosure</b>	DPLG
<b>Field Voltage</b>	150 V
	300 V
<b>Output Power</b>	5.000 HP
<b>Agency Approvals</b>	CSA
<b>Ambient Temperature</b>	40 °C
<b>Armature Current</b>	17.7 a
<b>Drip Cover</b>	No Drip Cover
<b>Duty Rating</b>	CONT
<b>Feedback Device</b>	NO FEEDBACK
<b>Field Winding Type</b>	STR. SHUNT
<b>Heater Indicator</b>	No Heater
<b>Insulation Class</b>	F
<b>Lifting Lugs</b>	Standard Lifting Lugs
<b>Motor Standards</b>	NEMA
<b>Mounting Arrangement</b>	F3
<b>Overall Length</b>	20.87 IN
<b>Service Factor</b>	1.00
<b>Shaft Diameter</b>	1.125 IN
<b>Shaft Ground Indicator</b>	No Shaft Grounding
<b>Shaft Slinger Indicator</b>	No Slinger
<b>Thermal Device - Bearing</b>	None

**Part detail**

<b>Revision</b>	-
<b>Type</b>	DC
<b>Mech. spec.</b>	
<b>Base</b>	
<b>Status</b>	PRD/A
<b>Elec. spec.</b>	K0007A A
<b>Layout</b>	875
<b>Eff. date</b>	12-27-2019
<b>CD Diagram</b>	15209
<b>Poles</b>	00
<b>Leads</b>	
<b>Proprietary</b>	False
<b>Created date</b>	12-26-2019

**Nameplate**

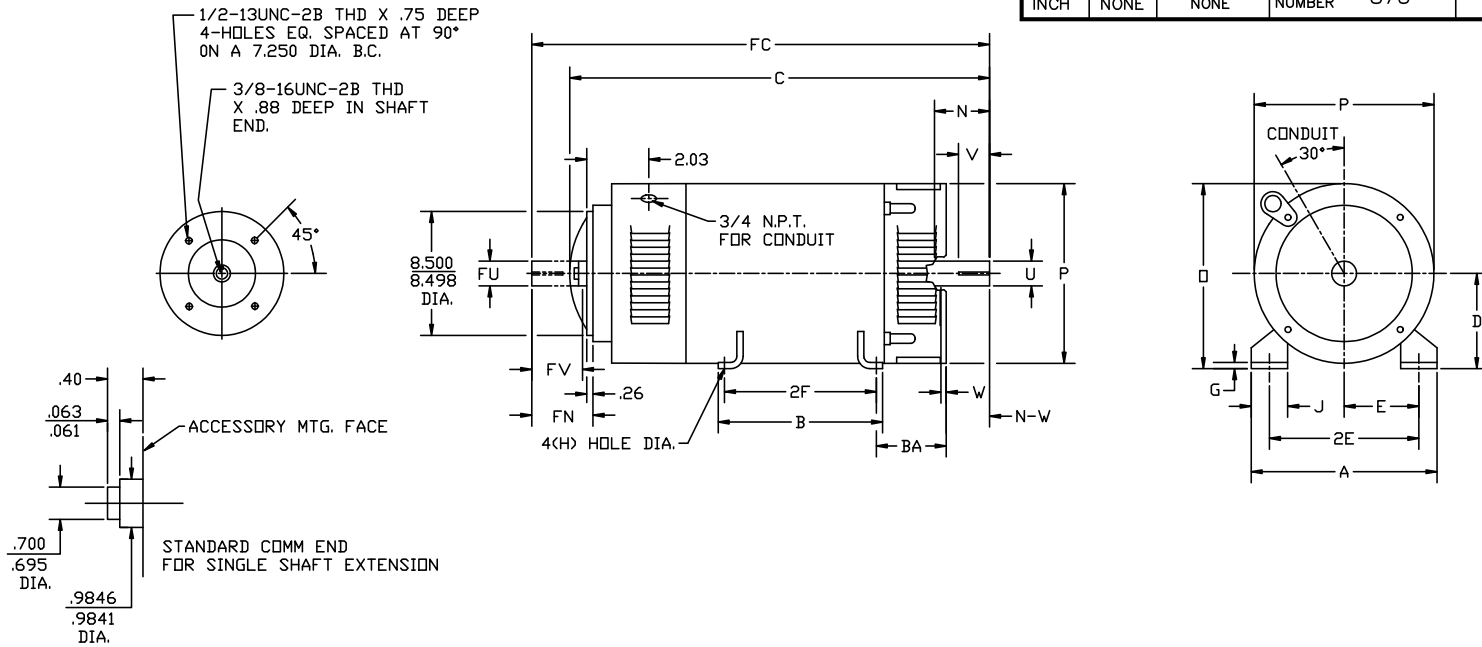
<b>NP1734</b>						
<b>CAT.NO.</b>	D2005P	<b>MODEL</b>	T18S8005			
<b>HP</b>	5	<b>RPM</b>	1750/2300	<b>FRAME</b>	L 0186AT	
<b>ARM V</b>	240	<b>ARM A</b>	17.70	<b>WOUND</b>	STR. SHUNT	
<b>FLD V</b>	150/300	<b>FLD A</b>	.74-.36/.37-.18			
<b>CONN</b>		<b>OHMS</b>	555.	<b>CL</b>	F	
<b>ENCL</b>	DPFG	<b>DUTY</b>	CONT	<b>MX AMB</b>	40	
<b>P CODE</b>	D	<b>CTSR</b>		<b>SER.F.</b>	1.0	
<b>S/N</b>		<b>E/S</b>	K0007A A			
	-					
<b>O.D.E. BRG.</b>	6205	<b>D.E. BRG.</b>	6206	<b>BRUSH</b>	18044-4	<b>QTY</b> 2

**Accessories**

<b>Part number</b>	<b>Description</b>	<b>Multiplier</b>
90EP5000A02	C-FACE CONVERSION KIT FOR STOCK MTR,FR 1	

CUSTOMER NAME		MODEL NO.			MTG.		REMARKS:	
CUSTOMER P.O.		FRAME	R.P.M.	VOLTS	PHASE		INSUL	
CERTIFIED BY		H.P.	TYPE	ENCL	FREQ.		AMB.	

UNITS: INCH	SCALE: NONE	PROPORTION: NONE	PART NUMBER	875	DWG. SIZE	A
-------------	-------------	------------------	-------------	-----	-----------	---



FRAME	FOOT MOUNTING						D.E. SHAFT EXTENSION						DRIVE KEY		ACC SHAFT EXTENSION			ACC KEY		FRAME								ARM APPROX. WK <sup>2</sup> LBS.FT. <sup>2</sup>	APPROXIMATE WEIGHT
	BA	E	2F	G	H	J	N	N-W	U	V	W	KEY-SQ.	KEY-LONG	FN	FU	FV	KEY-SQ.	KEY-LONG	A	B	C	FC	D	O	P				
L182AT	2.75	3.75	4.50	.38	.406	1.50	2.90	2.77	1.125	2.50 <sup>3</sup>	.13	.250	1.38	2.28	.875	2.03	.188	1.38	8.81	5.75	15.81	17.37	4.50 <sup>2</sup>	8.94	8.88	.28	84 <sup>5</sup>		
L186AT	2.75	3.75	7.00	.38	.406	1.50	2.90	2.77	1.125	2.50 <sup>3</sup>	.13	.250	1.38	2.28	.875	2.03	.188	1.38	8.81	8.25	19.31	20.87	4.50 <sup>2</sup>	8.94	8.88	.67	159 <sup>5</sup>		
1810AT	2.75	3.75	11.00	.38	.406	1.50	2.90	2.77	1.125	2.50 <sup>3</sup>	.13	.250	1.38	2.28	.875	2.03	.188	1.38	8.81	12.25	22.21	23.78	4.50 <sup>2</sup>	9.00	9.00	1.0	195 <sup>5</sup>		

- 1) SHAFT DIAMETERS TO 1.500 TOLERANCE +.0000 - .0005  
SHAFT DIAMETERS ABOVE 1.500 TOLERANCE +.0000 - .0010  
SHAFT DIAMETERS TO 1.625 RUNOUT .002 T.I.R. MAX.  
SHAFT DIAMETERS ABOVE 1.625 RUNOUT .003 T.I.R. MAX.
- 2) 'D' DIMENSION TOLERANCE +.000 - .030
- 3) 'V' DIMENSION IS MAX. HUB LENGTH ON SHAFT
- 4) CONDUIT BOX CAN BE ROTATED IN 90° STEPS ON ITS OWN AXIS.
- 5) TOTAL WEIGHT OF MOTOR.
- 6) ALL DIMENSIONS NOT NOTED ARE NOMINAL DIMENSIONS CONSULT FACTORY FOR TOLERANCES.

FOR F1 OR F2 CONDUIT BOX LOCATION SEE SALES ORDER

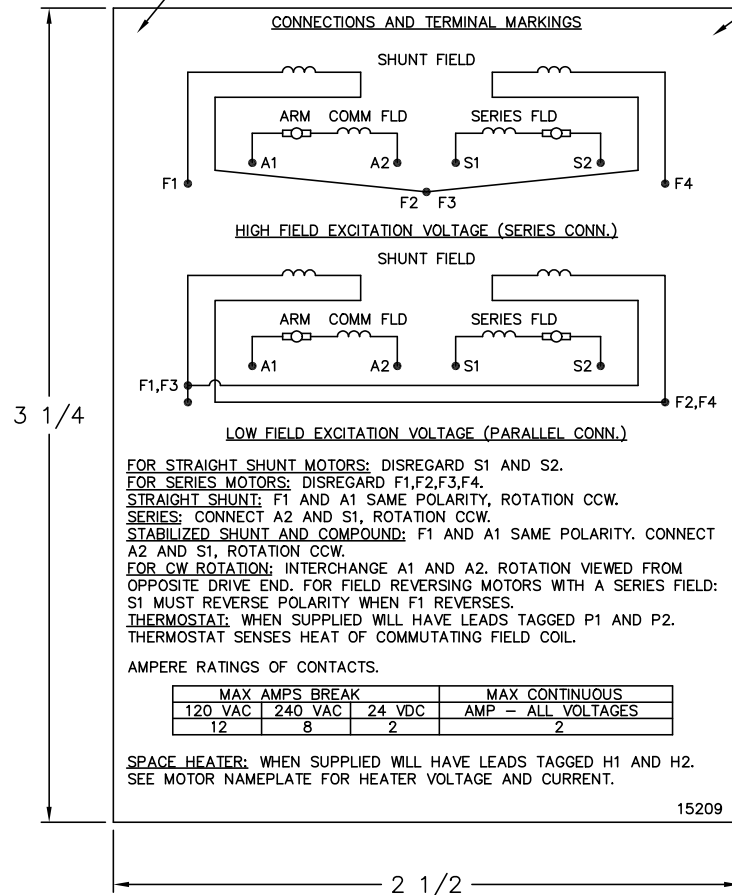
DESIGNER CSL 7-19-91	<b>BALDOR</b>
ENGINEER RFI 7-19-91	
ENGINEER DAC 7-19-91	TITLE: DIMENSION SHEET DPFG, STD AT
MANUF. RWT 7-19-91	PART NUMBER 875
	DWG. SIZE A
	REV. A

A	19032	REDRAWN	CSL	7-19-1991
REV.	ECO.	DESCRIPTION	BY	DATE

15209

ALUMINUM (MATT) BACKGROUND WITH BLACK LETTERS

LABEL MANUFACTURER IDENTIFYING MARK TO APPEAR HERE



**NOTE:**  
 MATERIAL .005 MINIMUM FULL HARD ALUMINUM DULL FINISH.  
 TEMP. RANGE -20°C TO +125°C MAXIMUM.  
 FOR INDOOR AND OUTDOOR MOUNTING BACK.  
 METAL, PRESSURE SENSITIVE BACK. MUST MEET CSA STANDARD.  
 THE CSA IDENTIFYING MARK OF THE LABEL MANUFACTURER MUST APPEAR IN THE UPPER RIGHT HAND CORNER AS INDICATED.

UNLESS OTHERWISE SPECIFIED, BREAK ALL SHARP EDGES .010/.020. REMOVE ALL BURRS.

TOLERANCES

.X ±.015	FRACTIONS ±1/32
.XX ±.010	RADI ±1/16
.XXX ±.005	ANGLES ±1°

15209

MATL: NOTED			
REV:	G	CHANGE ALL "NAMEPLATE" TEXT TO "LABEL"	
60Z91		SCALE: -	BY: BKW
		FILE: CHB00002485	REVISED: 02/19/97
		TDR: 0115147	

**BALDOR ELECTRIC Co.**

LABEL, CONNECTIONS AND TERMINAL MARKINGS DC