

**BALDOR • RELIANCE**

---

# Customer information packet

## CXT3302TS-5

30HP, 3525RPM, 3PH, 60HZ, 286TSC, 1048M, TEFC

Class - CLI GP A,B,C,D

Division - Division II

## Specifications

Enclosure	TEFC
Frame	286TSC
Frame Material	Iron
Frequency	60.00 Hz
Haz Area Class and Group	CL I GP A,B,C,D
Haz Area Division	Division II
Motor Letter Type	Three Phase
Output @ Frequency	30.000 HP @ 60 HZ
Phase	3
Synchronous Speed @ Frequency	3600 RPM @ 60 HZ
Voltage @ Frequency	575.0 V @ 60 HZ
Agency Approvals	UR NEMA_PREMIUM NEMA PREMIUM CSA EEV CCSA US
Ambient Temperature	40 °C
Auxillary Box	No Auxillary Box
Auxillary Box Lead Termination	None
Base Indicator	Rigid
Bearing Grease Type	Polyrex EM (-20F +300F)
Blower	None
Constant Torque Speed Range	6
Current @ Voltage	27.000 A @ 575.0 V
Design Code	A
Drip Cover	No Drip Cover
Duty Rating	CONT
Efficiency @ 100% Load	91.7 %
Electrically Isolated Bearing	Not Electrically Isolated
Feedback Device	NO FEEDBACK
Haz Area Temp Code	T3
Heater Indicator	No Heater

## Part detail

Revision	C
Type	AC
Mech. spec.	
Base	
Status	PRD/A
Elec. spec.	10WGZ523
Layout	10LY-001-183
Eff. date	11-27-2024
CD Diagram	CD0006
Poles	02
Leads	3#10
Proprietary	False
Created date	05-28-2021

<b>High Voltage Full Load Amps</b>	27.0 a
<b>Insulation Class</b>	F
<b>Inverter Code</b>	Inverter Duty
<b>IP Rating</b>	NONE
<b>KVA Code</b>	F
<b>Lifting Lugs</b>	Standard Lifting Lugs
<b>Locked Bearing Indicator</b>	Locked Bearing
<b>Motor Lead Termination</b>	Flying Leads
<b>Motor Standards</b>	NEMA
<b>Motor Type</b>	1048M
<b>Mounting Arrangement</b>	F1
<b>Number of Poles</b>	2
<b>Overall Length</b>	26.32 IN
<b>Power Factor</b>	90
<b>Product Family</b>	General Purpose
<b>Pulley Face Code</b>	C-Face
<b>Rodent Screen</b>	None
<b>Service Factor</b>	1.15
<b>Shaft Diameter</b>	1.625 IN
<b>Shaft Ground Indicator</b>	No Shaft Grounding
<b>Shaft Rotation</b>	Reversible
<b>Speed</b>	3525 rpm
<b>Speed Code</b>	Single Speed
<b>Starting Method</b>	Direct on line
<b>Thermal Device - Bearing</b>	None
<b>Thermal Device - Winding</b>	None
<b>Vibration Sensor Indicator</b>	No Vibration Sensor
<b>Winding Thermal 1</b>	None
<b>Winding Thermal 2</b>	None

**Nameplate**

**NP4224L**

<b>CAT.NO.</b>	CXT3302TS-5	<b>I.P.</b>	54
<b>SPEC.</b>	10-0000-2156	<b>ENCL</b>	TEFC
<b>FRAME</b>	286TSC	<b>H.P.</b>	30
<b>VOLTS</b>	575	<b>P.F.</b>	90
<b>F.L. AMPS</b>	27	<b>RATING</b>	40C AMB-CONT
<b>R.P.M.</b>	3525		
<b>HZ.</b>	60	<b>PH.</b>	3
<b>SER.F.</b>	1.15	<b>DES.</b>	A
<b>NEMA NOM. EFF.</b>	91.7	<b>WK2</b>	2.07
<b>DE</b>	6311	<b>ODE</b>	6309
<b>MAG. CUR.</b>	6.8		
<b>INV TYPE</b>	PWM	<b>CHP</b>	60
<b>CT</b>	6	<b>TO</b>	60
<b>CC</b>	010A	<b>SN</b>	
		<b>TO</b>	90
		<b>VT</b>	6
		<b>TO</b>	60
		<b>INV TEMP CODE</b>	T3

**AC Induction Motor Performance Data**

Record # 55458

Typical performance - not guaranteed values

<b>Winding: 10WGZ523-R001</b>		<b>Type: 1048M</b>		<b>Enclosure: TEFC</b>	
<b>Nameplate Data</b>			<b>575 V, 60 Hz: Single Voltage Motor</b>		
<b>Rated Output (HP)</b>	30	<b>Full Load Torque</b>	44.8 LB-FT		
<b>Volts</b>	575	<b>Start Configuration</b>	direct on line		
<b>Full Load Amps</b>	27	<b>Breakdown Torque</b>	132 LB-FT		
<b>R.P.M.</b>	3525	<b>Pull-up Torque</b>	46 LB-FT		
<b>Hz</b>	60 Phase	3	<b>Locked-rotor Torque</b>	63.8 LB-FT	
<b>NEMA Design Code</b>	B	<b>KVA Code</b>	F	<b>Starting Current</b>	166 A
<b>Service Factor (S.F.)</b>	1.15		<b>No-load Current</b>	6.82 A	
<b>NEMA Nom. Eff.</b>	91.7	<b>Power Factor</b>	90	<b>Line-line Res. @ 25°C</b>	0.376 Ω
<b>Rating - Duty</b>	40C AMB-CONT		<b>Temp. Rise @ Rated Load</b>	69°C	
<b>S.F. Amps</b>			<b>Temp. Rise @ S.F. Load</b>	86°C	
			<b>Locked-rotor Power Factor</b>	23.2	
			<b>Rotor inertia</b>	2.06 LB-FT <sup>2</sup>	

**Load Characteristics 575 V, 60 Hz, 30 HP**

<b>% of Rated Load</b>	<b>25</b>	<b>50</b>	<b>75</b>	<b>100</b>	<b>125</b>	<b>150</b>	<b>S.F.</b>
<b>Power Factor</b>	68	84	88	90	90	90	90
<b>Efficiency</b>	86.9	91.3	91.8	91.7	90.7	89.6	91.1
<b>Speed</b>	3583	3565	3546	3525	3503	3477	3512
<b>Line amperes</b>	9.8	14.9	20.9	27.3	34.5	42.1	31.6

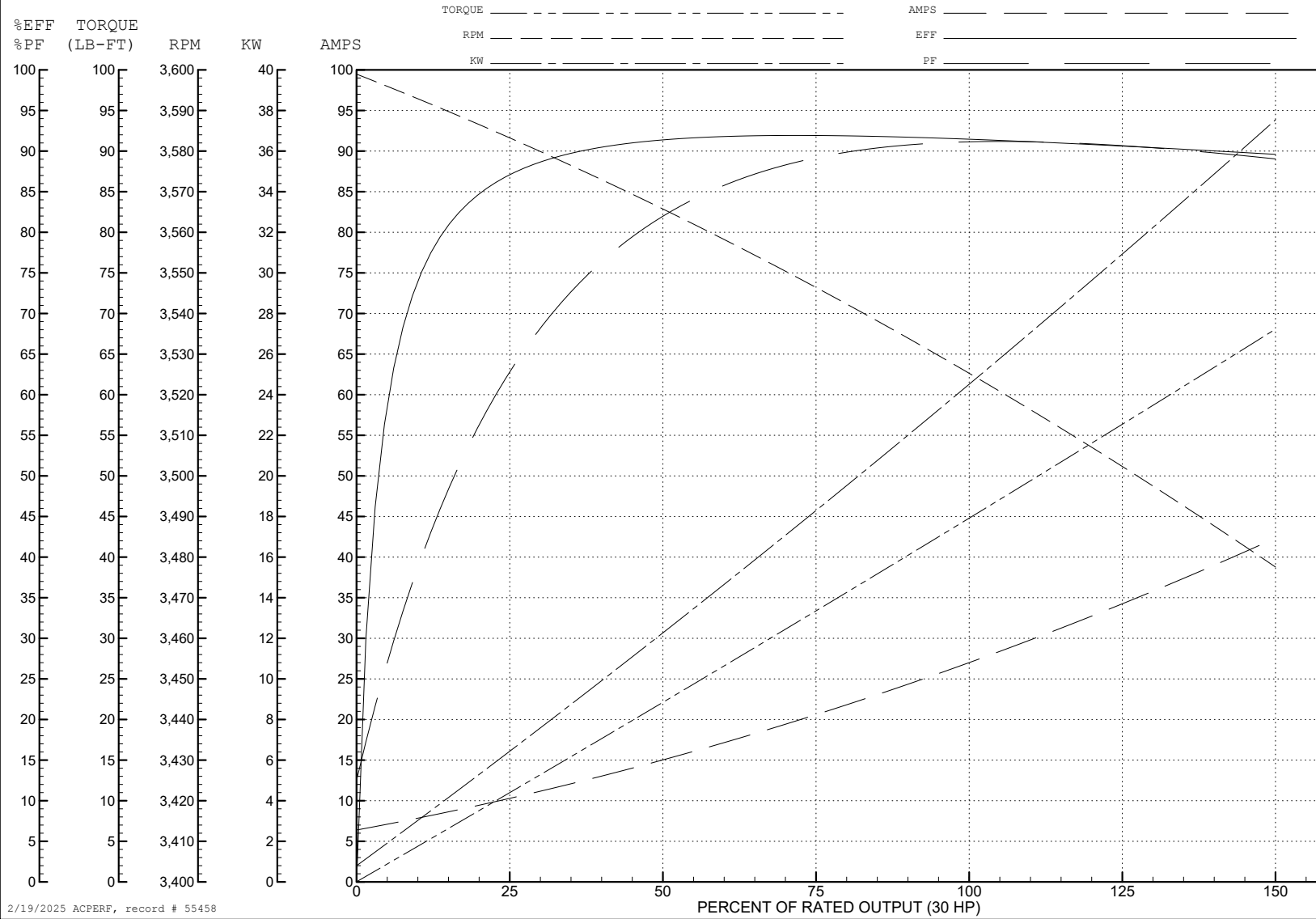
ABB Motors and Mechanical Inc.

WINDING # 10WGZ523

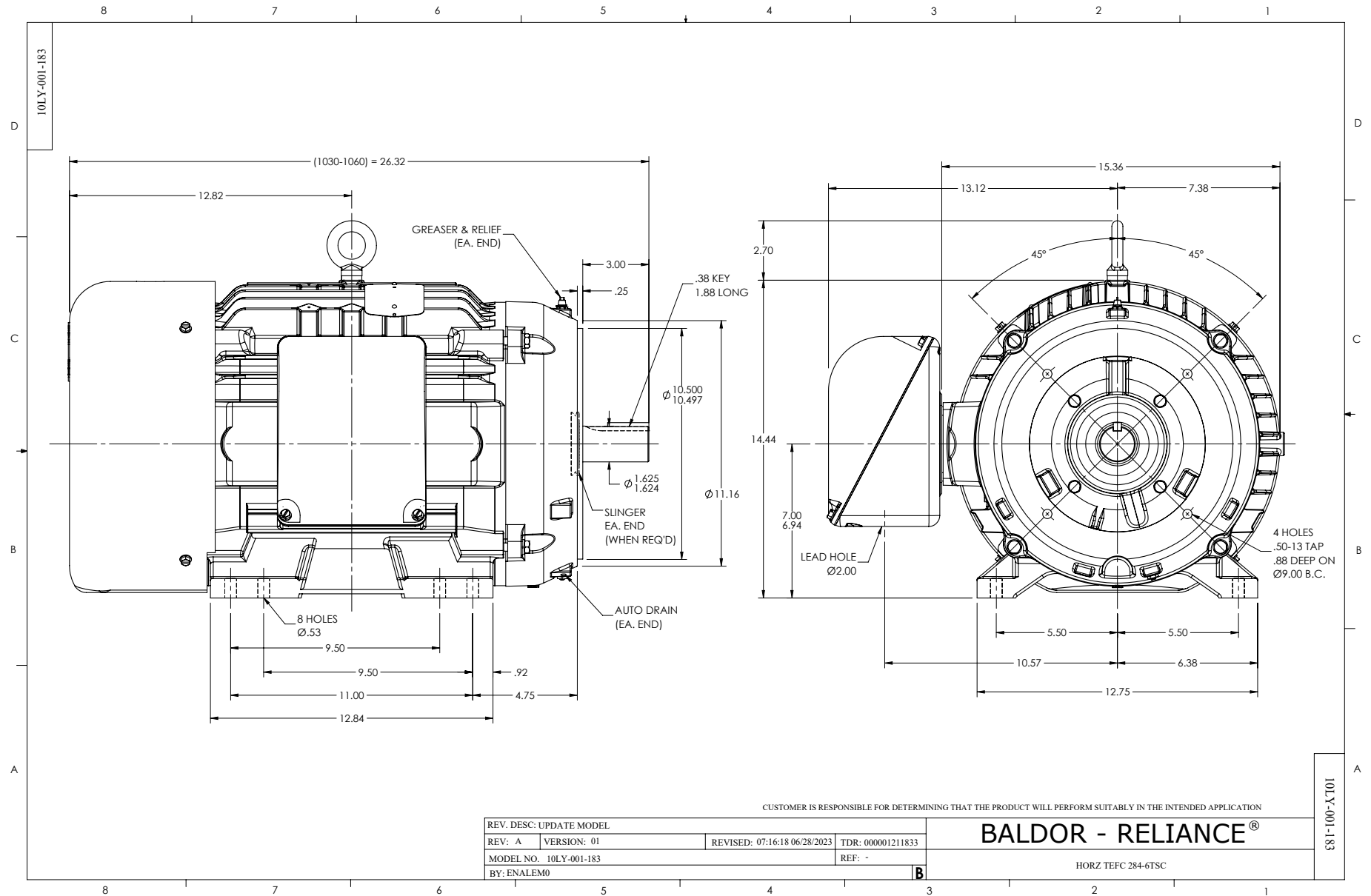
Typical performance - not guaranteed values.

30 HP 3 PH 60 HZ 3525 RPM 575 V 1048M

TORQUES (LB-FT): PO=132 PU=46 LR=63.8 LRA=166



2/19/2025 ACPERF, record # 55458



CD0006



NOTES:

1. THREE LEAD MOTOR MAY BE EITHER WYE CONNECTED OR DELTA CONNECTED.
2. INTERCHANGE ANY TWO LINE LEADS TO REVERSE ROTATION.
3. OPTIONAL THERMOSTATS ARE PROVIDED WHEN SPECIFIED.
4. ACTUAL NUMBER OF INTERNAL PARALLEL CIRCUITS MAY VARY.
5. LEAD COLORS ARE OPTIONAL. LEADS MUST BE NUMBERED AS SHOWN.

CD0006

REV. DESC: ADD CLASS CONN00000007		
REV. LTR: E	VERSION: 01	TDR: 000001099922
FILE: \AAA\00005\141	REVISED: 10:24:49 02/19/2019	BY: ENBRIRO
MTL: -	© □	

**BALDOR - RELIANCE®**

3PH, SV, 3 LEADS, WYE OR DELTA CONNECTED

SH 1 of 1