

**BALDOR • RELIANCE**

---

# Customer information packet

## CXT33004T-4

300HP, 1785RPM, 3PH, 60HZ, 449TC, A44160M, TEF

Class - None

Division - Division II

Copyright © All product information within this document is subject to ABB Motors and Mechanical Inc. copyright © protection, unless otherwise noted.

3/28/2023 6:08:17 AM

## Specifications

|                               |                         |
|-------------------------------|-------------------------|
| Enclosure                     | TEFC                    |
| Frame                         | 449TC                   |
| Frame Material                | Iron                    |
| Frequency                     | 60.00 Hz                |
| Motor Letter Type             | Three Phase             |
| Output @ Frequency            | 300.000 HP @ 60 HZ      |
| Phase                         | 3                       |
| Synchronous Speed @ Frequency | 1800 RPM @ 60 HZ        |
| Voltage @ Frequency           | 460.0 V @ 60 HZ         |
| XP Class and Group            | None                    |
| XP Division                   | Division II             |
| Ambient Temperature           | 40 °C                   |
| Auxillary Box                 | No Auxillary Box        |
| Base Indicator                | Rigid                   |
| Bearing Grease Type           | Polyrex EM (-20F +300F) |
| Constant Torque Speed Range   | 30-60                   |
| Current @ Voltage             | 334.000 A @ 460.0 V     |
| Design Code                   | B                       |
| Drip Cover                    | No Drip Cover           |
| Duty Rating                   | CONT                    |
| Efficiency @ 100% Load        | 96.2 %                  |
| Feedback Device               | NO FEEDBACK             |
| Heater Indicator              | No Heater               |
| High Voltage Full Load Amps   | 334.0 a                 |
| Insulation Class              | F                       |
| Inverter Code                 | Inverter Ready          |
| IP Rating                     | NONE                    |
| KVA Code                      | G                       |
| Motor Lead Quantity/Wire Size | 12 @ 1 AWG              |
| Motor Standards               | NEMA                    |
| Motor Type                    | A44160M                 |
| Mounting Arrangement          | F1                      |

## Part detail

|              |                    |
|--------------|--------------------|
| Revision     | C                  |
| Type         | AC                 |
| Mech. spec.  |                    |
| Base         |                    |
| Status       | PRD/A              |
| Elec. spec.  | A44WG5202          |
| Layout       | 617427-670         |
| Eff. date    | 01-29-2021         |
| CD Diagram   | 416820-036         |
| Poles        | 04                 |
| Leads        | 3#1 (04 per group) |
| Proprietary  | False              |
| Created date | 08-18-2020         |

|                                 |                    |
|---------------------------------|--------------------|
| <b>Number of Poles</b>          | 4                  |
| <b>Overall Length</b>           | 53.47 IN           |
| <b>Power Factor</b>             | 87                 |
| <b>Product Family</b>           | General Industrial |
| <b>Pulley End Bearing Type</b>  | Ball               |
| <b>Pulley Face Code</b>         | C-Face             |
| <b>Service Factor</b>           | 1.15               |
| <b>Shaft Diameter</b>           | 3.375 IN           |
| <b>Shaft Ground Indicator</b>   | No Shaft Grounding |
| <b>Shaft Rotation</b>           | Reversible         |
| <b>Shaft Slinger Indicator</b>  | Shaft Slinger      |
| <b>Speed</b>                    | 1785 rpm           |
| <b>Speed Code</b>               | Single Speed       |
| <b>Starting Method</b>          | Direct on line     |
| <b>Thermal Device - Bearing</b> | None               |
| <b>Thermal Device - Winding</b> | None               |
| <b>XP Temp Code</b>             | T2C                |

**Nameplate**

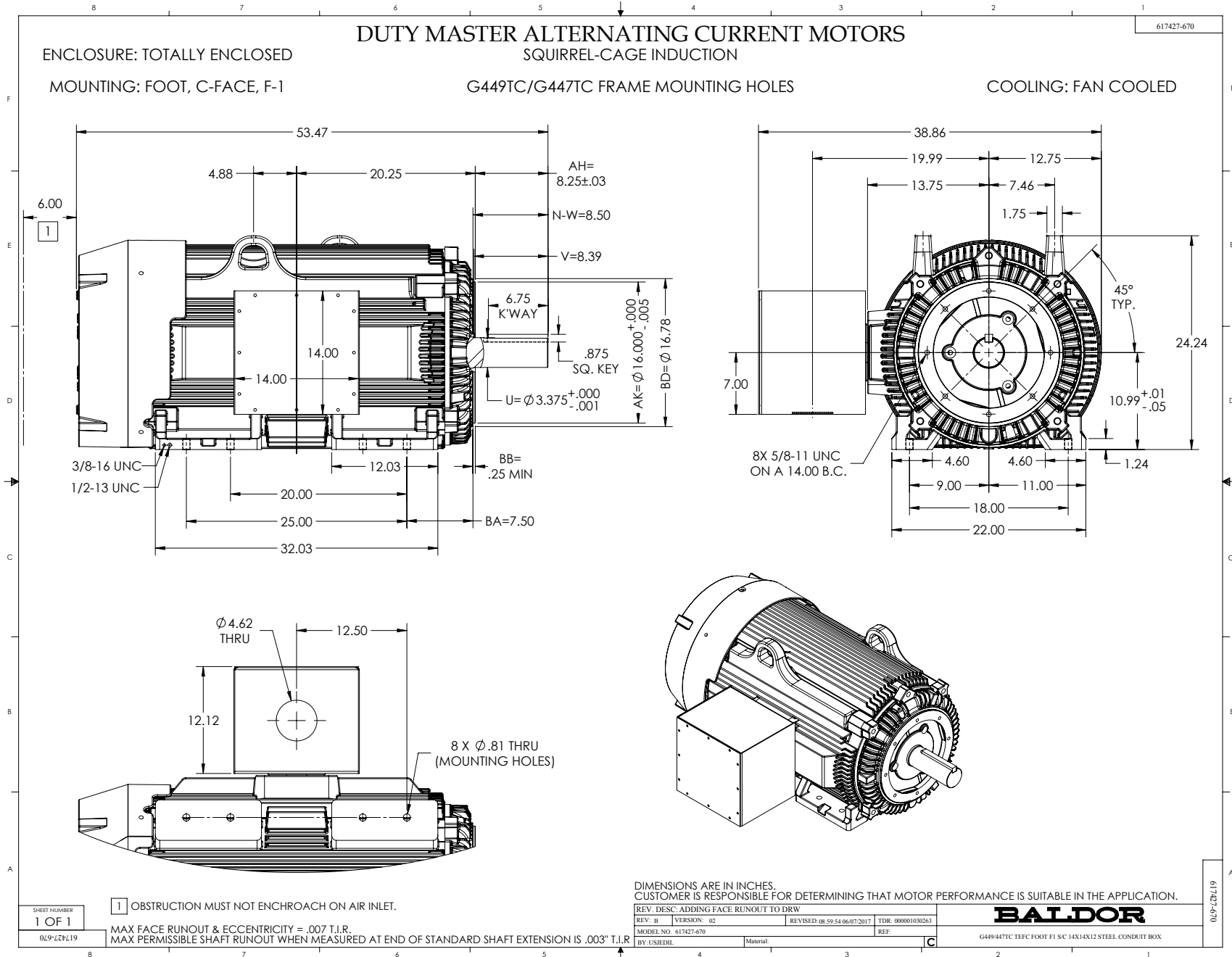
**NP4152LUA**

|                    |                                |           |                  |                         |              |                      |                    |                       |               |                      |           |       |
|--------------------|--------------------------------|-----------|------------------|-------------------------|--------------|----------------------|--------------------|-----------------------|---------------|----------------------|-----------|-------|
| <b>CAT #</b>       | CXT33004T-4                    |           |                  | <b>SER</b>              |              |                      |                    | <b>CC</b>             | 0010A         |                      |           |       |
| <b>SPEC</b>        | A44-8419-5202                  |           |                  | <b>RATING</b>           | 40C AMB-CONT |                      |                    |                       |               |                      |           |       |
| <b>HZ</b>          | <b>VOLTS</b>                   |           | <b>AMPS</b>      | <b>RPM</b>              | <b>HP</b>    | <b>CODE</b>          | <b>SF</b>          | <b>DES</b>            | <b>PF</b>     | <b>NEMA NOM. EFF</b> |           |       |
| 60                 | 460                            |           | 334              | 1785                    | 300          | G                    | 1.15               | B                     | 87 %          | 96.2 %               |           |       |
|                    |                                |           |                  |                         |              |                      |                    |                       | %             |                      | %         |       |
| <b>PH</b>          | 3                              | <b>CL</b> | F                | <b>MAX RPM</b>          | 2700         | <b>MAX CORR KVAR</b> | 47                 | <b>USABLE AT 208V</b> |               |                      | A         |       |
| <b>BRG</b>         | <b>DE</b>                      | 6318      | <b>ODE</b>       | 6318                    | <b>ENCL</b>  | TEFC                 | <b>FR</b>          | 449TC                 | <b>IP</b>     | 54                   |           |       |
| <b>GREASE</b>      | POLYREX EM                     |           |                  |                         |              |                      | <b>MTR WT</b>      |                       |               | <b>LBS</b>           |           |       |
|                    | <b>CL I DIV 2 GRPS A,B,C,D</b> |           |                  | <b>CL I ZONE 2 GRPS</b> |              |                      | <b>IIA,IIB,IIC</b> |                       | <b>TEMP T</b> | 230                  | C         |       |
| <b>INV READY</b>   | <b>CT</b>                      | 30-60     | <b>HZ</b>        | 2:1                     | <b>VT</b>    | 0-60                 | <b>HZ</b>          | 1000:1                | <b>CHP</b>    | 60-90                | <b>HZ</b> | 1.1.5 |
| <b>INV TEMP CL</b> | T2C                            | C         | <b>USABLE AT</b> | 50HZ 250HP 380V 337A    |              |                      |                    |                       | 1.0SF         |                      |           |       |











416820-036

A-C MOTOR  
CONNECTION DIAGRAM  
STANDARD 3 LEAD CONNECTED



(N.P. 1575-BA)

416820-036

|                                      |                              |                   |
|--------------------------------------|------------------------------|-------------------|
| REV. DESC: LOADED TO BUS, C/R 335225 |                              |                   |
| REV. LTR: -                          | VERSION: 00                  | TDR: 000000538207 |
| FILE: \MGA\00000\682                 | REVISED: 11:54:06 04/30/2010 |                   |
| MTL: -                               | BY: RAGRA                    |                   |

**BALDOR**

CONN DIAG - STANDARD 3 LEAD  
SH 1 of 1