



---

# Customer information packet

## CXT31504T-4

150HP, 1785RPM, 3PH, 60HZ, 445TC, A4488M, TEFC

Class - CLI GP A,B,C,D

Division - Division II

## Specifications

Enclosure	TEFC
Frame	445TC
Frame Material	Iron
Frequency	60.00 Hz
Haz Area Class and Group	CLI GP A,B,C,D
Haz Area Division	Division II
Motor Letter Type	Three Phase
Output @ Frequency	150.000 HP @ 60 HZ
Phase	3
Synchronous Speed @ Frequency	1800 RPM @ 60 HZ
Voltage @ Frequency	460.0 V @ 60 HZ
Agency Approvals	CCSAUSEEV NEMA PREMIUM NEMA_PREMIUM UR
Ambient Temperature	40 °C
Auxiliary Box	NO AUXILLARY BOX
Base Indicator	Rigid
Bearing Grease Type	Polyrex EM (-20F +300F)
Constant Torque Speed Range	15-60
Current @ Voltage	169.000 A @ 460.0 V
Design Code	B
Drip Cover	No Drip Cover
Duty Rating	CONT
Efficiency @ 100% Load	95.8 %
Feedback Device	NO FEEDBACK
Haz Area Temp Code	T3
Heater Indicator	No Heater
High Voltage Full Load Amps	169.0 a
Insulation Class	F
Inverter Code	Inverter Ready
IP Rating	NONE

## Part detail

Revision	D
Type	AC
Mech. spec.	
Base	
Status	PRD/A
Elec. spec.	A44WG3335
Layout	617427-802
Eff. date	07-08-2024
CD Diagram	416820-036
Poles	04
Leads	3#1/0
Proprietary	False
Created date	08-18-2020

<b>KVA Code</b>	F
<b>Max Speed</b>	2700 rpm
<b>Motor Lead Quantity/Wire Size</b>	3 @ 1/0 AWG
<b>Motor Standards</b>	NEMA
<b>Motor Type</b>	A4488M
<b>Mounting Arrangement</b>	F1
<b>Number of Poles</b>	4
<b>Overall Length</b>	44.97 IN
<b>Power Factor</b>	86
<b>Product Family</b>	General Industrial
<b>Pulley End Bearing Type</b>	Ball
<b>Pulley Face Code</b>	C-Face
<b>Service Factor</b>	1.15
<b>Shaft Diameter</b>	3.375 IN
<b>Shaft Ground Indicator</b>	No Shaft Grounding
<b>Shaft Rotation</b>	Reversible
<b>Shaft Slinger Indicator</b>	Shaft Slinger
<b>Speed</b>	1785 rpm
<b>Speed Code</b>	Single Speed
<b>Starting Method</b>	Direct on line
<b>Thermal Device - Bearing</b>	None
<b>Thermal Device - Winding</b>	None

**Nameplate**

**NP4152LUA**

<b>CAT #</b>	CXT31504T-4			<b>SER</b>				<b>CC</b>	010A			
<b>SPEC</b>	A44-9287-3335			<b>RATING</b>	40C AMB-CONT							
<b>HZ</b>	<b>VOLTS</b>		<b>AMPS</b>	<b>RPM</b>	<b>HP</b>	<b>CODE</b>	<b>SF</b>	<b>DES</b>	<b>PF</b>	<b>NEMA NOM. EFF</b>		
60	460		169	1785	150	F	1.15	B	86 %	95.8 %		
									%	%		
<b>PH</b>	3	<b>CL</b>	F	<b>MAX RPM</b>	2700	<b>MAX CORR KVAR</b>	30					
<b>BRG</b>	<b>DE</b>	6318	<b>ODE</b>	6318	<b>ENCL</b>	TEFC	<b>FR</b>	445TC	<b>IP</b>			
<b>GREASE</b>	POLYREX EM			<b>MTR WT</b>			<b>LBS</b>					
	<b>CL I DIV 2 GRPS A,B,C,D</b>			<b>CL I ZONE 2 GRPS</b>			<b>IIA,IIB,IIC</b>		<b>TEMP T</b>	200	<b>C</b>	
<b>INV READY</b>	<b>CT</b>	15-60	<b>HZ</b>	4:1	<b>VT</b>	0-60	<b>HZ</b>	1000:1	<b>CHP</b>	60-90	<b>HZ</b>	1:1.5
<b>INV TEMP CL</b>	T3	<b>C</b>	<b>USABLE AT</b>	50HZ 125HP 380V 171A					1.0SF			

S/O	FRAME	HP	TYPE	PHASE/ HERTZ	RPM	VOLTS
	445T	150	P	3/60	1785	460

AMPS	DUTY	AMB °C/ INSUL	S.F.	NEMA DESIGN	CODE LETTER	ENCLOSURE
169	CONT	40/F	1.15	B	F	TEFC

E/S	ROTOR	TEST S.O.	TEST DATE	STATOR RES. @25 °C OHMS (BETWEEN LINES)
498808	418143053AE	---	---	.0298

**PERFORMANCE**


LOAD	HP	AMPERES	RPM	% POWER FACTOR	% EFFICIENCY
NO LOAD	0	48.9	1800	4.26	0
1/4	37.6	69.1	1796	54.3	93.6
2/4	75.0	97.1	1792	75.6	95.7
3/4	112	131	1788	83.4	96.0
4/4	150	169	1784	86.5	95.8
5/4	188	210	1779	87.6	95.3

**SPEED TORQUE**

	RPM	% TORQUE FULL LOAD	TORQUE LB.-FT.	AMPERES
LOCKED ROTOR	0	130	572	1041
PULL UP	270	116	511	1020
BREAKDOWN	1729	280	1237	579
FULL LOAD	1784	100	442	169

AMPERES SHOWN FOR 460 VOLT CONNECTION. IF OTHER CONNECTIONS ARE AVAILABLE, THE AMPERES WILL VARY INVERSELY WITH THE RATED VOLTAGE.

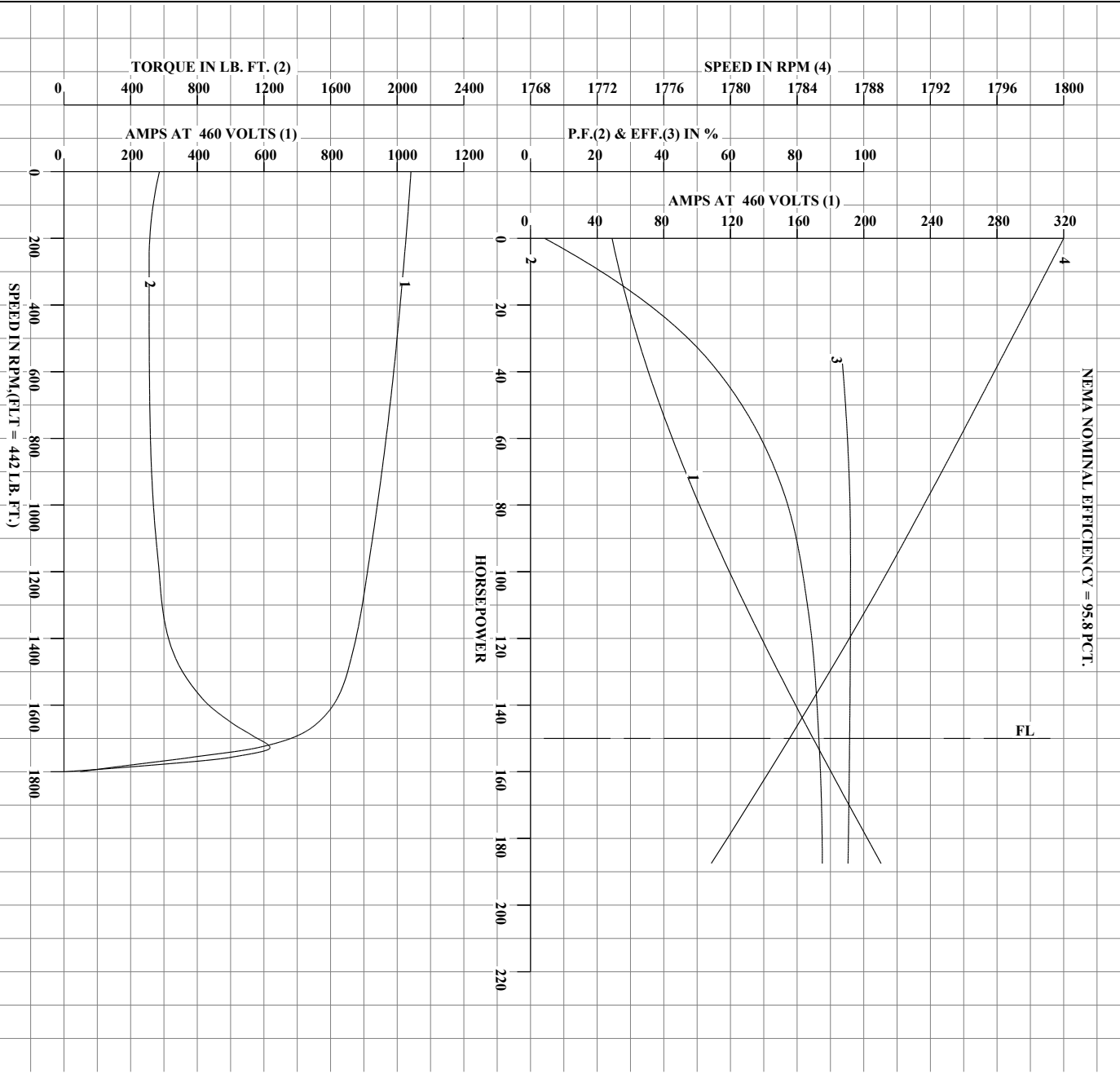
TYPICAL DATA  
NEMA NOMINAL EFFICIENCY = 95.8 PCT.

	DRAWN BY: C.BATANGANE	AC MOTOR PERFORMANCE DATA	A44W/G3335-R001 DATE ISSUED 02/03/25
	CHECKED BY: C.EJAMISON APPROVED BY: C.EJAMISON DATE: 10/16/23		

USCHATA

Printed on 02/03/2025 8:48 AM

REL.S.O.	445T	RPM	1785	S.F.	1.15	ROTOR	418143053AE
FRAME	445T	VOLTS	460	NEMA DESIGN	B	TEST S.O.	TYPICAL DATA
HP	150	AMPS	169	CODE LETTER	F	TEST DATE	---
TYPE	P	DUTY CONT		ENCLOSURE	TEFC	STATOR RES. @ 25°C	.0298
PHASE / HERTZ	3/60	AMB °C / INSUL.	40/F	E/S	498808	OHMS (BETWEEN LINES)	



AMPERES SHOWN FOR 460 VOLT CONNECTION, IF OTHER VOLTAGE CONNECTIONS ARE AVAILABLE, THE AMPERES WILL VARY INVERSELY WITH THE RATED VOLTAGE.



DRAWN BY: C.B. ATANGANE  
 CHECKED BY: C.E. JAMISON  
 APPROVED BY: C.E. JAMISON  
 DATE: 10/16/23

AC MOTOR  
 PERFORMANCE  
 DATA

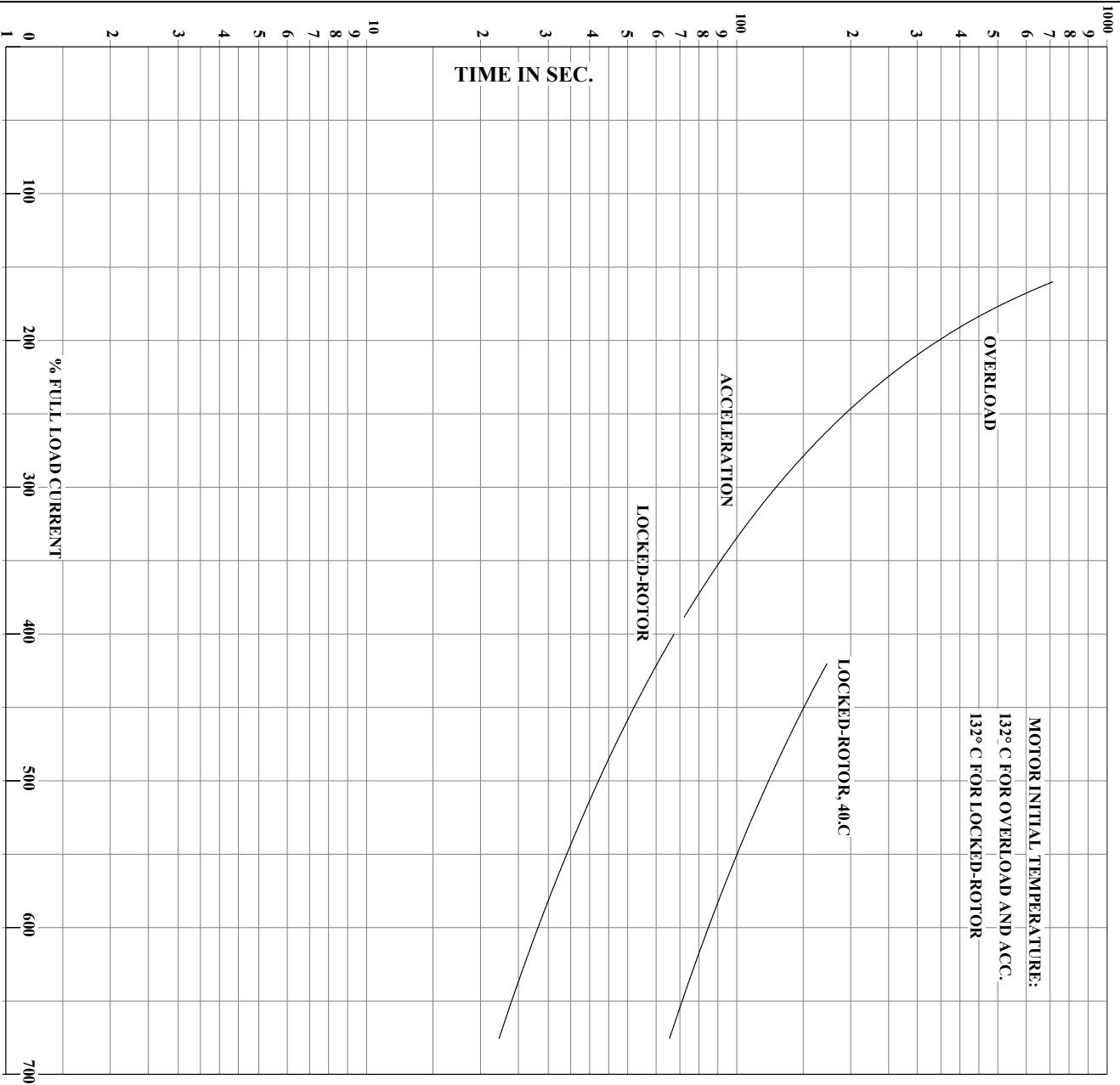
**A44WG3335-R001**

ISSUE DATE 02/03/25

USCHATA

Printed on 02/03/2025 8:48 AM

REL.S.O.	445T	RPM	1785	S.F.	1.15	ROTOR	418143053AE
FRAME	150	VOLTS	460	NEMA DESIGN	B	TEST S.O.	TYPICAL DATA
HP	150	AMPS	169	CODE LETTER	F	TEST DATE	---
TYPE	P	DUTY CONT		ENCLOSURE	TEFC	STATOR RES. @ 25°C	.0298
PHASE/HERTZ	3/60	AMB °C/INSUL	40/F	E/S	498808	OHMS (BETWEEN LINES)	



THE THERMAL LIMIT CURVE  
NEMA NOMINAL EFFICIENCY = 95.8 PCT.

AMPERES SHOWN FOR 460 VOLT CONNECTION, IF OTHER VOLTAGE CONNECTIONS ARE AVAILABLE, THE AMPERES WILL VARY INVERSELY WITH THE RATED VOLTAGE.



DRAWN BY: C.B. ATANGANE  
CHECKED BY: C.E. JAMISON  
APPROVED BY: C.E. JAMISON  
DATE: 10/16/23

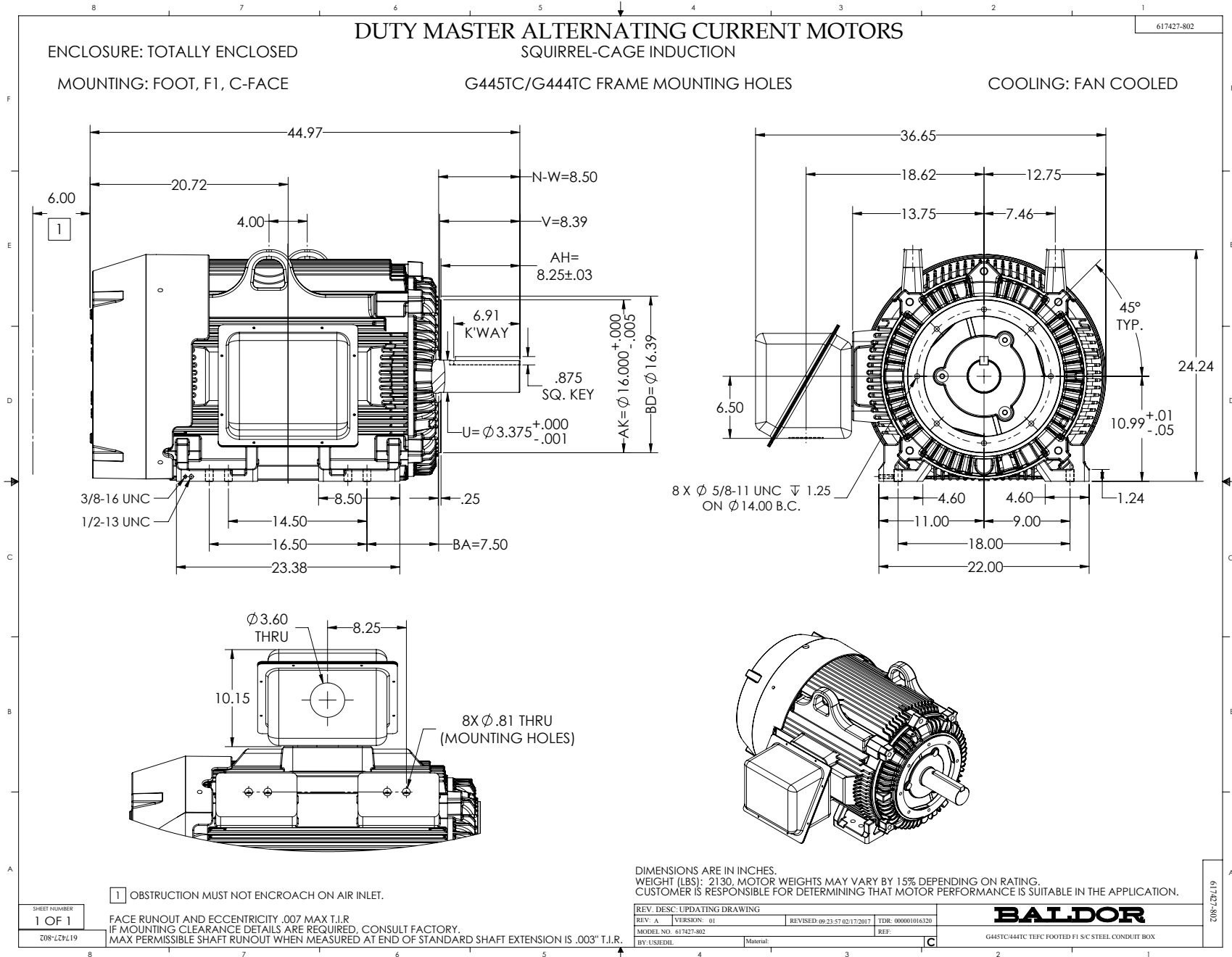
AC MOTOR  
PERFORMANCE  
DATA

A44WG3335-R001

ISSUE DATE 02/03/25

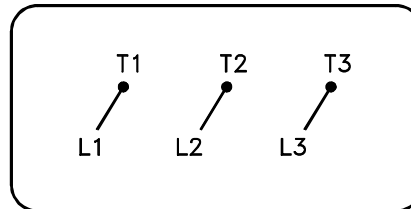
USCHATA

Printed on 02/03/2025 8:48 AM



416820-036

A-C MOTOR  
CONNECTION DIAGRAM  
STANDARD 3 LEAD CONNECTED



(N.P. 1575-BA)

416820-036

REV. DESC: LOADED TO BUS, C/R 335225		
REV. LTR: -	VERSION: 00	TDR: 000000538207
FILE: \MGA\00000\682	REVISED: 11:54:06 04/30/2010	
MTL: -	BY: RAGRA	

**BALDOR**

CONN DIAG - STANDARD 3 LEAD  
SH 1 of 1