

**BALDOR • RELIANCE**

---

# Customer information packet

## CXT31254T-5

125HP, 1785RPM, 3PH, 60HZ, 444TC, A44076M, TEF

Class - None

Division - Division II

## Specifications

Enclosure	TEFC
Frame	444TC
Frame Material	Iron
Frequency	60.00 Hz
Haz Area Class and Group	None
Haz Area Division	Division II
Motor Letter Type	Three Phase
Output @ Frequency	125.000 HP @ 60 HZ
Phase	3
Synchronous Speed @ Frequency	1800 RPM @ 60 HZ
Voltage @ Frequency	575.0 V @ 60 HZ
Agency Approvals	UR NEMA_PREMIUM NEMA PREMIUM CCSAUSEEV
Ambient Temperature	40 °C
Auxiliary Box	NO AUXILLARY BOX
Base Indicator	Rigid
Bearing Grease Type	Polyrex EM (-20F +300F)
Current @ Voltage	115.000 A @ 575.0 V
Design Code	B
Drip Cover	No Drip Cover
Duty Rating	CONT
Efficiency @ 100% Load	95.4 %
Feedback Device	NO FEEDBACK
Heater Indicator	No Heater
High Voltage Full Load Amps	115.0 a
Insulation Class	F
Inverter Code	Not Inverter
IP Rating	NONE
KVA Code	G
Max Speed	3600 rpm

## Part detail

Revision	B
Type	AC
Mech. spec.	
Base	
Status	PRD/A
Elec. spec.	A44WG4202
Layout	617427-802
Eff. date	09-25-2025
CD Diagram	416820-036
Poles	04
Leads	3#1
Proprietary	False
Created date	07-15-2021

<b>Motor Lead Quantity/Wire Size</b>	3 @ 1 AWG
<b>Motor Standards</b>	NEMA
<b>Motor Type</b>	A44076M
<b>Mounting Arrangement</b>	F1
<b>Number of Poles</b>	4
<b>Overall Length</b>	44.97 IN
<b>Power Factor</b>	85
<b>Product Family</b>	General Industrial
<b>Pulley End Bearing Type</b>	Ball
<b>Pulley Face Code</b>	C-Face
<b>Service Factor</b>	1.15
<b>Shaft Diameter</b>	3.375 IN
<b>Shaft Ground Indicator</b>	No Shaft Grounding
<b>Shaft Rotation</b>	Reversible
<b>Shaft Slinger Indicator</b>	Shaft Slinger
<b>Speed</b>	1785 rpm
<b>Speed Code</b>	Single Speed
<b>Starting Method</b>	Direct on line
<b>Thermal Device - Bearing</b>	None
<b>Thermal Device - Winding</b>	None

**Nameplate**

**NP4152LUA**

<b>CAT #</b>	CXT31254T-5			<b>SER</b>				<b>CC</b>	010A			
<b>SPEC</b>	A44-0002-4202			<b>RATING</b>	40C AMB-CONT							
<b>HZ</b>	<b>VOLTS</b>		<b>AMPS</b>	<b>RPM</b>	<b>HP</b>	<b>CODE</b>	<b>SF</b>	<b>DES</b>	<b>PF</b>	<b>NEMA NOM. EFF</b>		
60	575		115	1785	125	H	1.15	B	85 %	95.4 %		
									%	%		
<b>PH</b>	3	<b>CL</b>	F	<b>MAX RPM</b>	3600	<b>MAX CORR KVAR</b>	27					
<b>BRG</b>	<b>DE</b>	6318	<b>ODE</b>	6318	<b>ENCL</b>	TEFC	<b>FR</b>	444TC	<b>IP</b>	54		
<b>GREASE</b>	POLYREX EM						<b>MTR WT</b>	<b>LBS</b>				
	<b>CL I DIV 2 GRPS A,B,C,D</b>				<b>CL I ZONE 2 GRPS</b>			<b>IIA,IIB,IIC</b>	<b>TEMP T</b>	200 C		
<b>INV READY</b>	<b>CT</b>	6:1	<b>HZ</b>	10-60	<b>VT</b>	1000:1	<b>HZ</b>	0-60	<b>CHP</b>	1:1.5	<b>HZ</b>	60-90
<b>INV TEMP CL</b>	T3	<b>C</b>	<b>USABLE AT</b>	N/A								
<b>SFA 132</b>												

REL. S.O.	FRAME	HP	TYPE	PHASE/HERTZ	RPM	VOLTS
	444TS	125	P	3/60	1785	575
AMPS	DUTY	AMB °C/ INSUL.	S.F.	NEMA DESIGN	CODE LETTER	ENCL.
115	CONT	40/F	1.15	B	G	TEFC
E/S	ROTOR	TEST S.O.	TEST DATE	STATOR RES. @25 °C (BETWEEN LINES)		
498874	418143052KE	---	---	.0591		

**PERFORMANCE**

LOAD	HP	AMPERES	RPM	% POWER FACTOR	% EFFICIENCY
NO LOAD	0	41.6	1800	3.95	0
1/4	31.3	49.6	1796	50.9	92.8
2/4	62.5	67.1	1793	73.1	95.3
3/4	93.7	89.3	1789	82.1	95.7
4/4	125	114	1785	85.9	95.5
5/4	156	141	1781	87.4	95.1

**SPEED TORQUE**

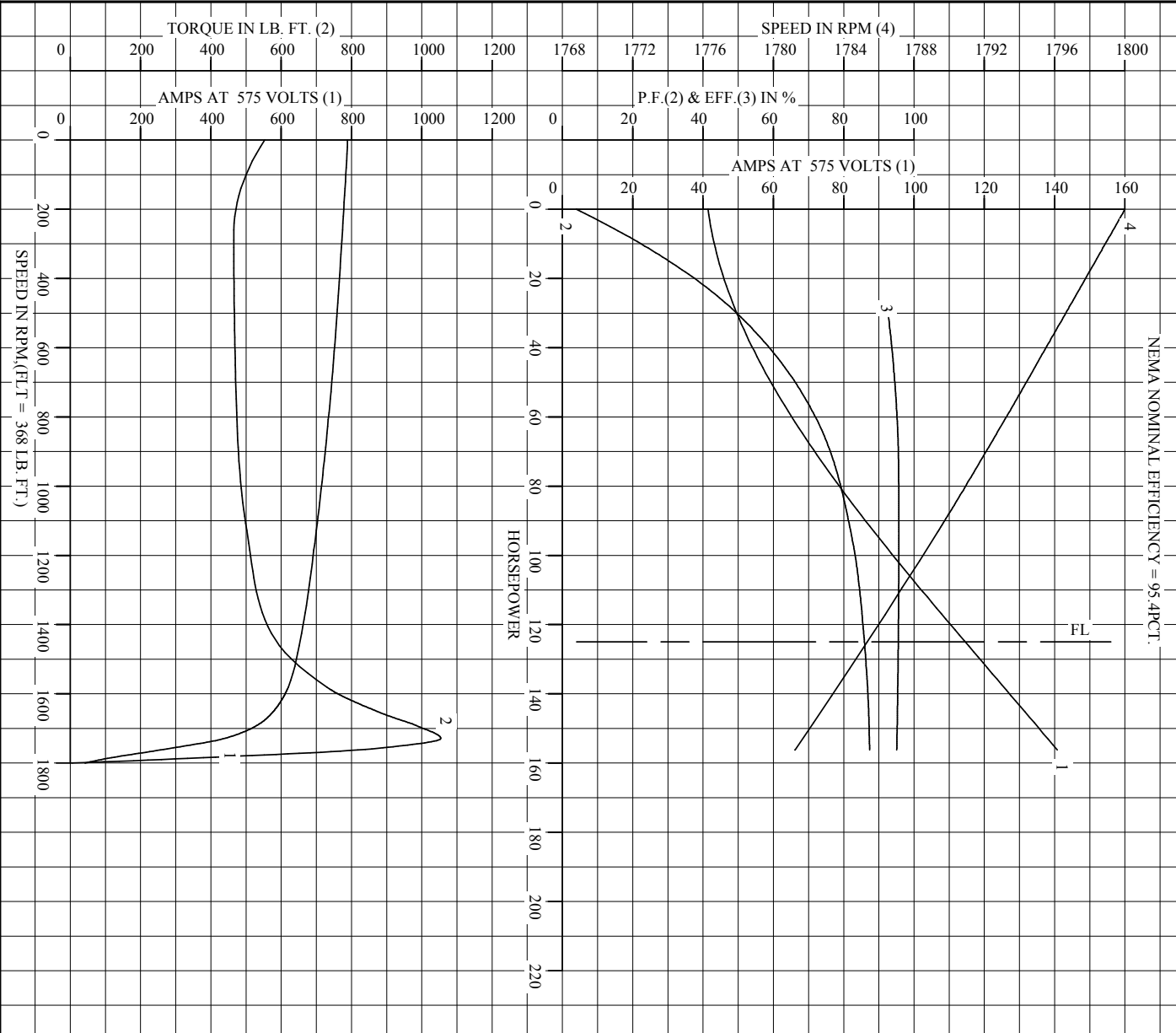
	RPM	TORQUE % FULL LOAD	TORQUE LB.-FT.	AMPERES
LOCKED ROTOR	0	150	553	789
PULL UP	270	127	465	774
BREAKDOWN	1729	287	1054	439
FULL LOAD	1785	100	368	114

AMPERES SHOWN FOR 575. VOLT CONNECTION. IF OTHER VOLTAGE CONNECTIONS ARE AVAILABLE, THE AMPERES WILL VARY INVERSELY WITH THE RATED VOLTAGE

REMARKS: TYPICAL DATA  
NEMA NOMINAL EFFICIENCY = 95.4PCT.

 <p>A MEMBER OF THE ABB GROUP</p>	DR. BY	E. J. CHRISTIAN	<p><b>A-C MOTOR PERFORMANCE DATA</b></p> <p><b>A44WG4202-R001</b></p> <p>ISSUE DATE 10/23/20</p>
	CK. BY	T. G. KEHART	
	APP. BY	E. J. CHRISTIAN	
DATE	11/24/15		

REL. S. O.		RPM	1785	S. F.	1.15	ROTOR	4181A3052KE
FRAME	444TS	VOLTS	575	NEMA DESIGN	B	TEST S. O.	TYPICAL DATA
HP	125	AMPS	115	CODE LETTER	G	TEST DATE	---
TYPE	P	DUTY	CONT	ENCLOSURE	TEFC	STATOR RES. @ 25 °C	.0591
PHASR./HERTZ	3/60	AMB °C/INSUL	40/F	E/S	498874	OHMS (BETWEEN LINES)	



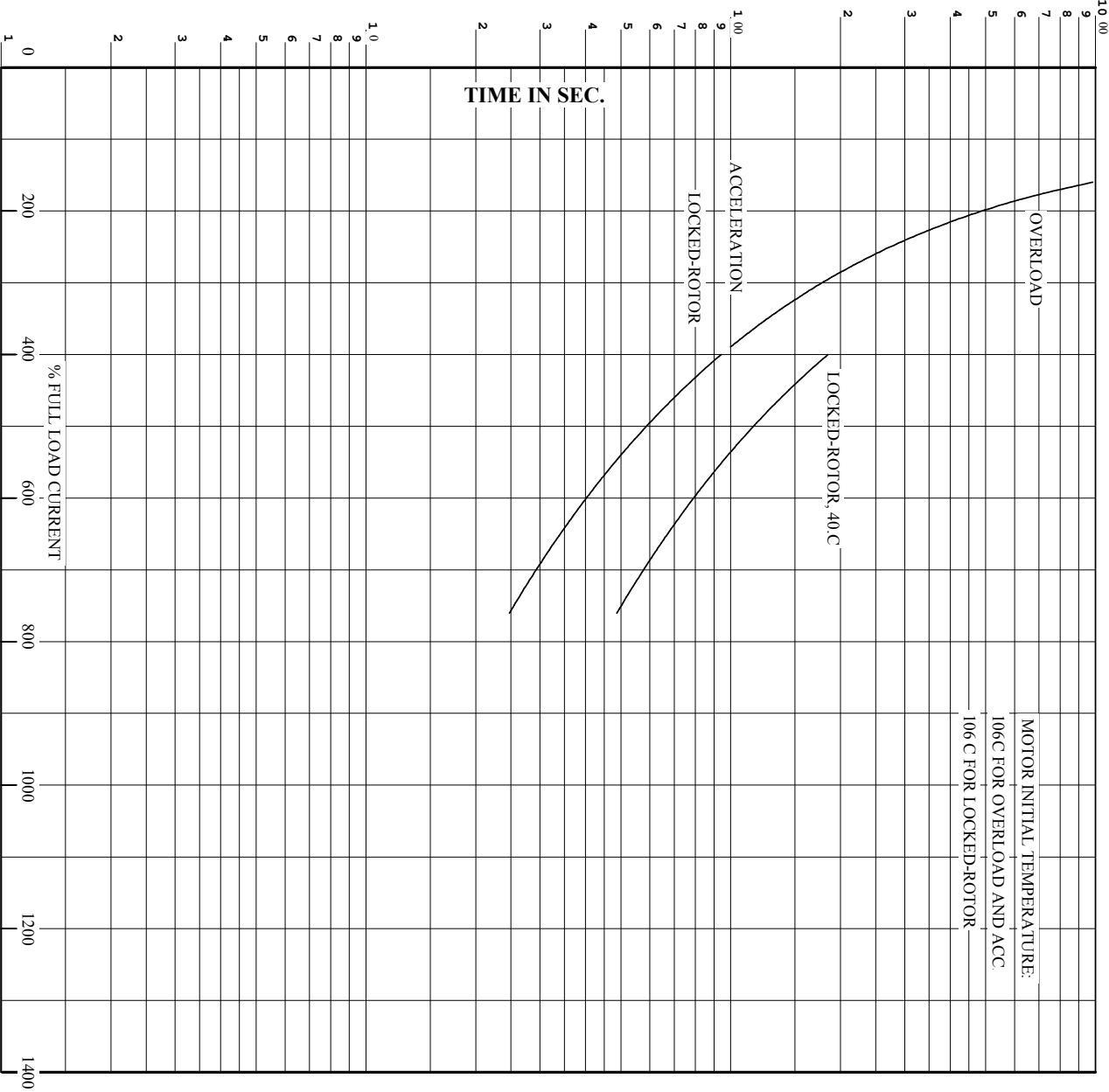
AMPERES SHOWN FOR 575 VOLT CONNECTION, IF OTHER VOLTAGE CONNECTIONS ARE AVAILABLE, THE AMPERES WILL VARY INVERSELY WITH THE RATED VOLTAGE.



DR. BY E. CHRISTIAN  
 CK. BY T. KELATI  
 App. BY E. CHRISTIAN  
 DATE 11/24/15

**A-C MOTOR**  
**PERFORMANCE**  
**CURVES**  
 A44WG4202-R001  
 ISSUE DATE 10/23/20

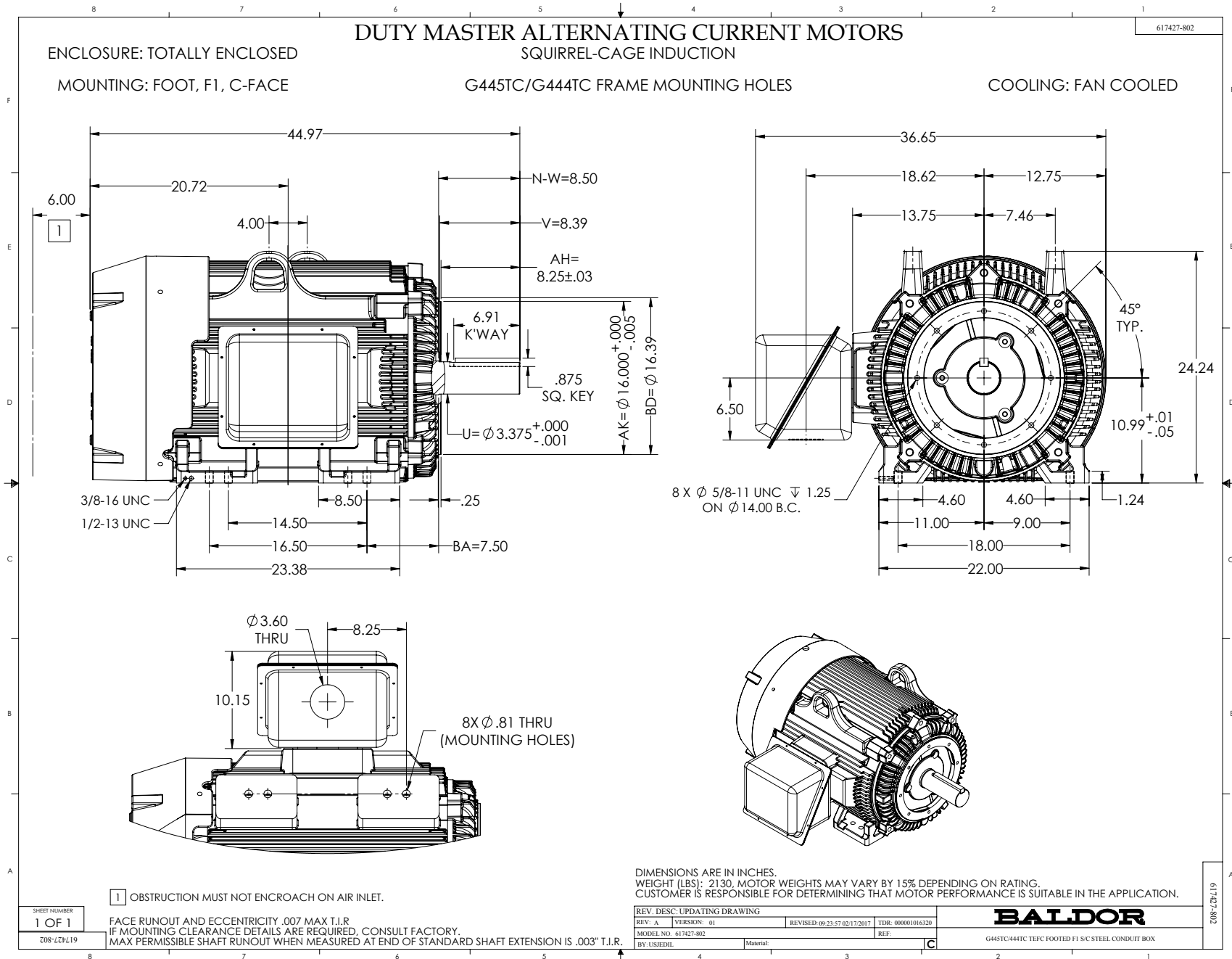
REL. S.O. **444TS** RPM **1785** S.F. **1.15** ROTOR **418143052KE**  
 FRAME **444TS** VOLTS **575** NEMA DESIGN **B** TEST S.O. **TYPICAL DATA**  
 HP **125** AMPS **115** CODE LETTER **G** TEST DATE **---**  
 TYPE **P** DUTY **CONT** ENCLOSURE **TEFC** STATOR RES @ 25 °C **.0591**  
 PHASE/HERTZ **3/60** AMB °C/INSUL **40/F** E/S **498874** OMS (BETWEEN LINES)



REMARKS: THERMAL LIMIT CURVE  
 NEMA NOMINAL EFFICIENCY = 95.4PCT.

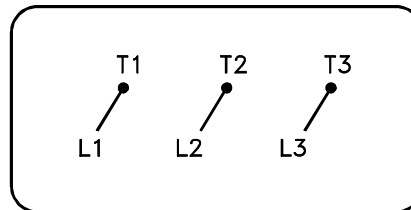
AMPERES SHOWN FOR **575** VOLT CONNECTION, IF OTHER VOLTAGE CONNECTIONS ARE AVAILABLE, THE AMPERES WILL VARY INVERSELY WITH THE RATED VOLTAGE.

<p><b>BALDOR</b>                  A MEMBER OF THE ABB GROUP</p>	DR. BY <u>EJCHRISTIAN</u>	<p><b>A-C MOTOR</b>                  PERFORMANCE CURVES</p>
	CK. BY <u>TOKELATI</u>	
	APP. BY <u>EJCHRISTIAN</u>	
DATE <u>11/24/15</u>	ISSUE DATE <u>10/23/20</u>	



416820-036

A-C MOTOR  
CONNECTION DIAGRAM  
STANDARD 3 LEAD CONNECTED



(N.P. 1575-BA)

416820-036

REV. DESC: LOADED TO BUS, C/R 335225		
REV. LTR: -	VERSION: 00	TDR: 000000538207
FILE: \MGA\00000\682	REVISED: 11: 54: 06 04/30/2010	
MTL: -	BY: RAGRA	

**BALDOR**

CONN DIAG - STANDARD 3 LEAD  
SH 1 of 1