

BALDOR • RELIANCE

Customer information packet

CXT3102T-5

10HP, 3525RPM, 3PH, 60HZ, 215TC, 0738M, TEFC, F

Class - CLI GP A,B,C,D

Division - Division II

Copyright © All product information within this document is subject to ABB Motors and Mechanical Inc. copyright © protection, unless otherwise noted.

8/11/2024 3:26:15 AM

Specifications

Enclosure	TEFC
Frame	215TC
Frame Material	Iron
Frequency	60.00 Hz
Haz Area Class and Group	CLI GP A,B,C,D
Haz Area Division	Division II
Motor Letter Type	Three Phase
Output @ Frequency	10.000 HP @ 60 HZ
Phase	3
Synchronous Speed @ Frequency	3600 RPM @ 60 HZ
Voltage @ Frequency	575.0 V @ 60 HZ
Agency Approvals	UR NEMA_PREMIUM NEMA PREMIUM CSA EEV CCSA US
Ambient Temperature	40 °C
Auxillary Box	No Auxillary Box
Auxillary Box Lead Termination	None
Base Indicator	Rigid
Bearing Grease Type	Polyrex EM (-20F +300F)
Blower	None
Constant Torque Speed Range	6
Current @ Voltage	9.500 A @ 575.0 V
Design Code	A
Drip Cover	No Drip Cover
Duty Rating	CONT
Efficiency @ 100% Load	91.0 %
Electrically Isolated Bearing	Not Electrically Isolated
Feedback Device	NO FEEDBACK
Haz Area Temp Code	T3C
Heater Indicator	No Heater

Part detail

Revision	A
Type	AC
Mech. spec.	
Base	
Status	PRD/A
Elec. spec.	07WGW382
Layout	07LYN006
Eff. date	09-19-2022
CD Diagram	CD0006
Poles	02
Leads	3#14
Proprietary	False
Created date	07-27-2021

High Voltage Full Load Amps	9.5 a
Insulation Class	F
Inverter Code	Inverter Duty
IP Rating	NONE
KVA Code	L
Lifting Lugs	Standard Lifting Lugs
Locked Bearing Indicator	Locked Bearing
Motor Lead Termination	Flying Leads
Motor Standards	NEMA
Motor Type	0738M
Mounting Arrangement	F1
Number of Poles	2
Overall Length	19.20 IN
Power Factor	93
Product Family	General Purpose
Pulley Face Code	C-Face
Rodent Screen	None
Service Factor	1.15
Shaft Diameter	1.375 IN
Shaft Ground Indicator	No Shaft Grounding
Shaft Rotation	Reversible
Speed	3525 rpm
Speed Code	Single Speed
Starting Method	Direct on line
Thermal Device - Bearing	None
Thermal Device - Winding	None
Vibration Sensor Indicator	No Vibration Sensor
Winding Thermal 1	None
Winding Thermal 2	None

Nameplate

NP4224L									
CAT.NO.	CXT3102T-5				I.P.	54			
SPEC.	07-0000-1119				ENCL	TEFC			
FRAME	215TC	H.P.	10		T. CODE	T3C			
VOLTS	575		P.F.	93					
F.L. AMPS	9.5		RATING	40C AMB-CONT					
R.P.M.	3525		USABLE AT 208V	N/A					
HZ.	60	PH.	3	CLASS	F				
SER.F.	1.15	DES.	A	SL HZ	1.4				
NEMA NOM. EFF.	91	WK2	0.35						
DE	6307	ODE	6206						
MAG. CUR.	3.4								
INV TYPE	PWM	CHP	60	TO	90	INV TEMP CODE	T3C		
CT	6	TO	60	VT	6	TO	60		
CC	010A	SN							

AC Induction Motor Performance Data

Record # 88596

Typical performance - not guaranteed values

Winding: 07WGW382-R001		Type: 0738M		Enclosure: TEFC			
Nameplate Data			575 V, 60 Hz: Single Voltage Motor				
Rated Output (HP)	10	Full Load Torque	14.9076 LB-FT				
Volts	575	Start Configuration	direct on line				
Full Load Amps	9.4	Breakdown Torque	63.1322 LB-FT				
R.P.M.	3525	Pull-up Torque	29.87 LB-FT				
Hz	60 Phase	3	Locked-rotor Torque	28.4426 LB-FT			
NEMA Design Code	A	KVA Code	L	Starting Current	76.2067 A		
Service Factor (S.F.)	1.15		No-load Current	3.7057 A			
NEMA Nom. Eff.	91	Power Factor	88	Line-line Res. @ 25°C	1.26 Ω		
Rating - Duty	40C AMB-CONT		Temp. Rise @ Rated Load	37°C			
S.F. Amps			Temp. Rise @ S.F. Load	40°C			
			Locked-rotor Power Factor	34.7468			
			Rotor inertia	0.347 lb-ft ²			

Load Characteristics 575 V, 60 Hz, 10 HP

% of Rated Load	25	50	75	100	125	150	S.F.
Power Factor	53.6451	74.6116	83.8606	88.2013	89.6555	90.3469	89
Efficiency	79.2816	86.8452	89.1634	89.9399	90.053	90.0353	90
Speed	3580.992	3564.432	3547.332	3529.512	3518.532	3510.971	3523
Line amperes	4.4051	5.791	7.5249	9.4578	10.6732	11.5136	10.2

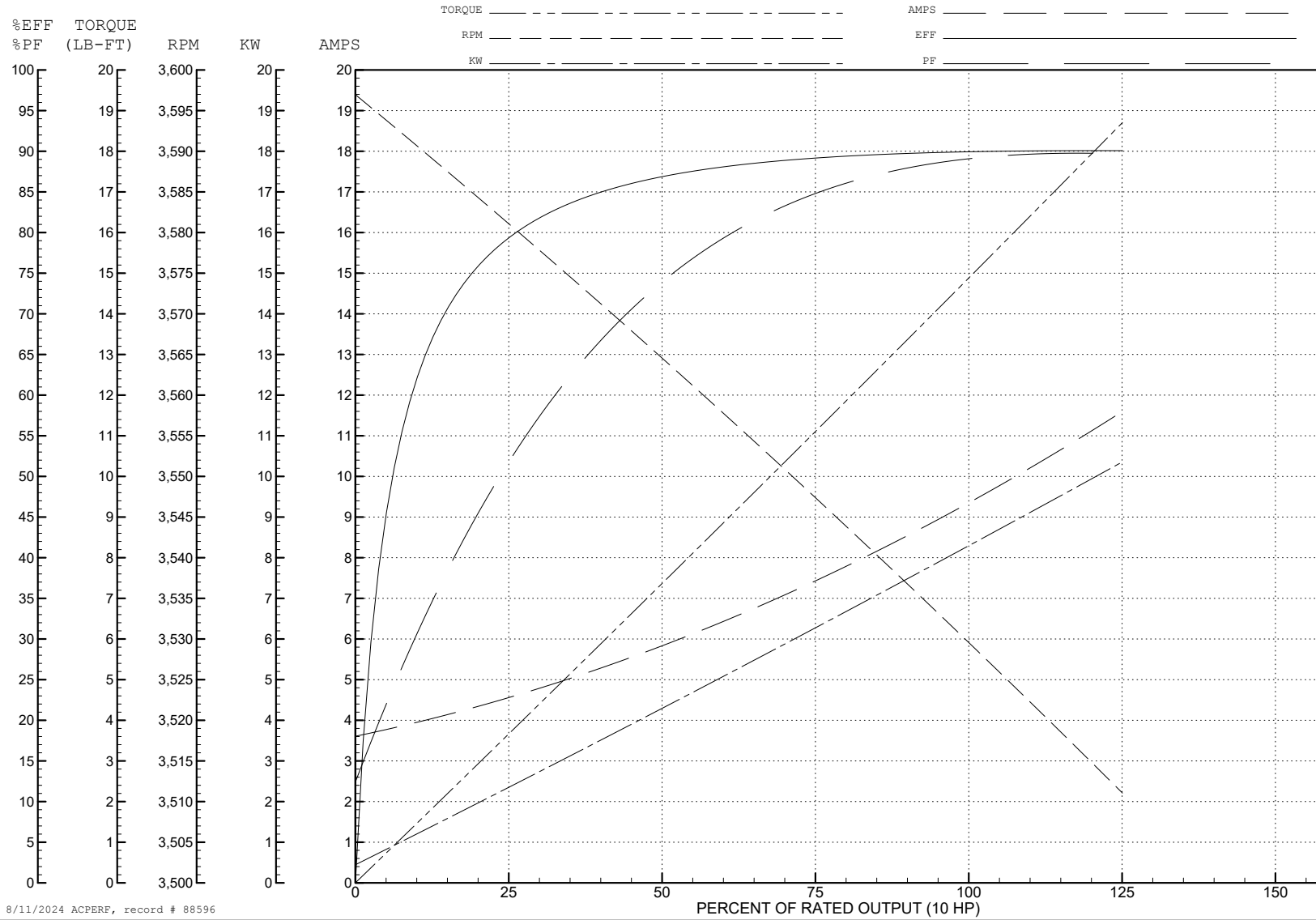
ABB Motors and Mechanical Inc.

WINDING # 07WGW382

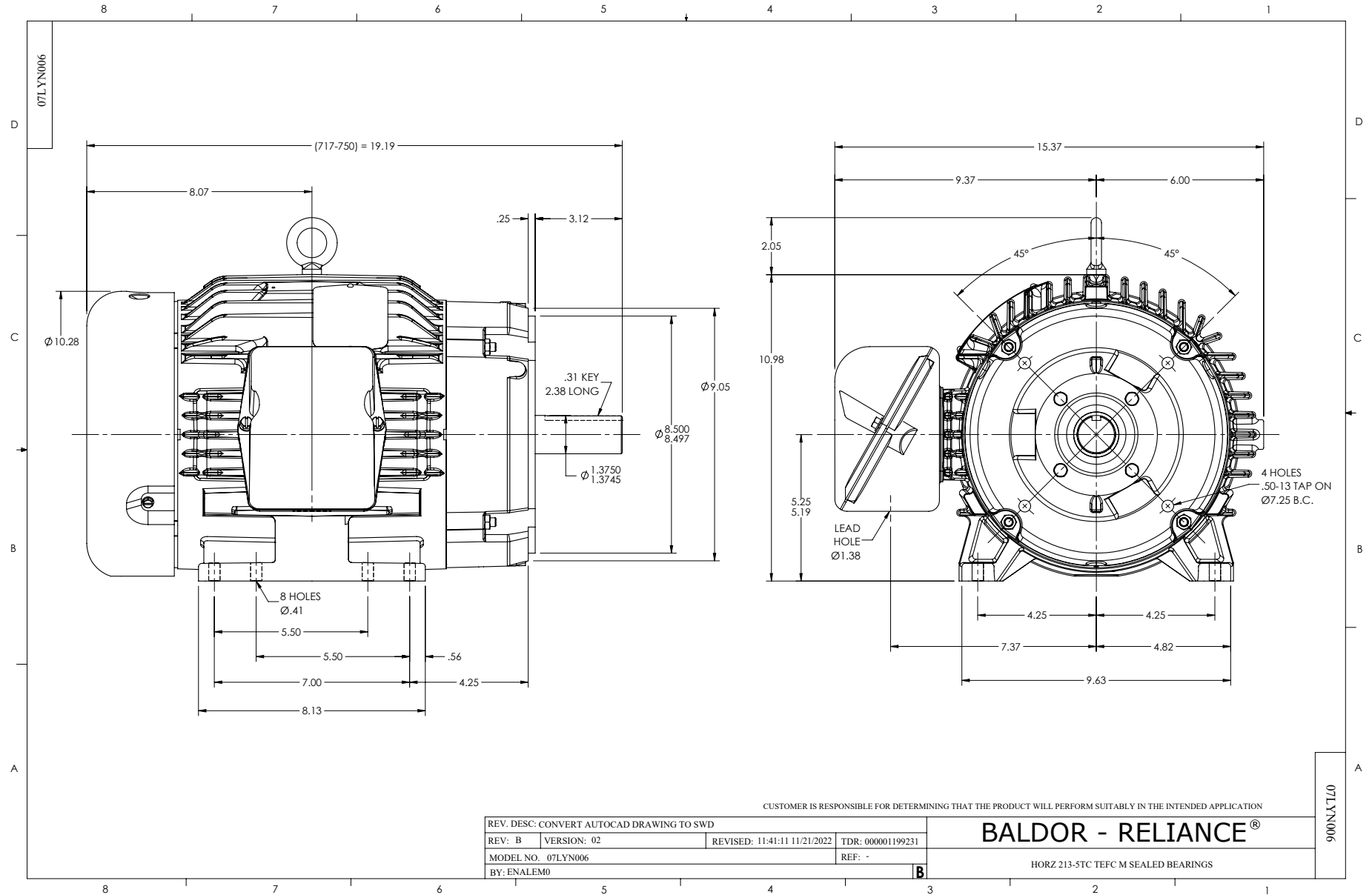
Typical performance - not guaranteed values.

10 HP 3 PH 60 HZ 3525 RPM 575 V 0738M

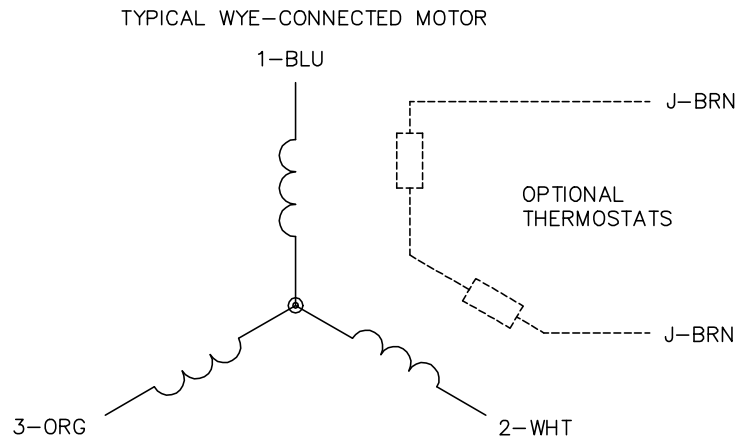
TORQUES (LB-FT): PO=63.1322 PU=29.87 LR=28.4426 LRA=76.2067



8/11/2024 ACPERF, record # 88596



CD0006



NOTES:

1. THREE LEAD MOTOR MAY BE EITHER WYE CONNECTED OR DELTA CONNECTED.
2. INTERCHANGE ANY TWO LINE LEADS TO REVERSE ROTATION.
3. OPTIONAL THERMOSTATS ARE PROVIDED WHEN SPECIFIED.
4. ACTUAL NUMBER OF INTERNAL PARALLEL CIRCUITS MAY VARY.
5. LEAD COLORS ARE OPTIONAL. LEADS MUST BE NUMBERED AS SHOWN.

CD0006

REV. DESC: ADD CLASS CONN00000007		
REV. LTR: E	VERSION: 01	TDR: 000001099922
FILE: \AAA\00005\141	REVISED: 10:24:49 02/19/2019	BY: ENBRIRO
MTL: -	© □	

BALDOR - RELIANCE®

3PH, SV, 3 LEADS, WYE OR DELTA CONNECTED

SH 1 of 1