



Customer information packet

CXT3074T

7.5HP, 1760RPM, 3PH, 60HZ, 213TC, 0744M, TEFC

Class - CLI GP A,B,C,D

Division - Division II

Specifications

Enclosure	TEFC
Frame	213TC
Frame Material	Iron
Frequency	60.00 Hz
Haz Area Class and Group	CL I GP A,B,C,D
Haz Area Division	Division II
Motor Letter Type	Three Phase
Output @ Frequency	7.500 HP @ 60 HZ
Phase	3
Synchronous Speed @ Frequency	1800 RPM @ 60 HZ
Voltage @ Frequency	460.0 V @ 60 HZ 208.0 V @ 60 HZ 230.0 V @ 60 HZ
Agency Approvals	UR CCSA US NEMA_PREMIUM NEMA PREMIUM CSA EEV
Ambient Temperature	40 °C
Auxillary Box	No Auxillary Box
Auxillary Box Lead Termination	None
Base Indicator	Rigid
Bearing Grease Type	Polyrex EM (-20F +300F)
Blower	None
Constant Torque Speed Range	3
Current @ Voltage	19.600 A @ 230.0 V 20.400 A @ 208.0 V 9.800 A @ 460.0 V
Design Code	B
Drip Cover	No Drip Cover
Duty Rating	CONT
Efficiency @ 100% Load	91.7 %

Part detail

Revision	J
Type	AC
Mech. spec.	
Base	
Status	PRD/A
Elec. spec.	07WGT456
Layout	07LYN006
Eff. date	06-28-2024
CD Diagram	CD0005
Poles	04
Leads	9#14
Proprietary	False
Created date	09-04-2020

Electrically Isolated Bearing	Not Electrically Isolated
Feedback Device	NO FEEDBACK
Haz Area Temp Code	T3C
Heater Indicator	No Heater
High Voltage Full Load Amps	9.8 a
Insulation Class	F
Inverter Code	Inverter Duty
IP Rating	NONE
KVA Code	H
Lifting Lugs	Standard Lifting Lugs
Locked Bearing Indicator	Locked Bearing
Max Speed	2700 rpm
Motor Lead Termination	Flying Leads
Motor Standards	NEMA
Motor Type	0744M
Mounting Arrangement	F1
Number of Poles	4
Overall Length	19.20 IN
Power Factor	78
Product Family	General Purpose
Pulley Face Code	C-Face
Rodent Screen	None
Service Factor	1.15
Shaft Diameter	1.375 IN
Shaft Ground Indicator	No Shaft Grounding
Shaft Rotation	Reversible
Speed	1760 rpm
Speed Code	Single Speed
Starting Method	Direct on line
Thermal Device - Bearing	None
Thermal Device - Winding	None
Vibration Sensor Indicator	No Vibration Sensor
Winding Thermal 1	None
Winding Thermal 2	None

Nameplate

NP4163L										
CAT.NO.	CXT3074T					I.P.	54			
SPEC.	07-0000-0865					ENCL	TEFC			
FRAME	213TC		H.P.	7.5						
VOLTS	208-230/460		P.F.	78						
F.L. AMPS	20.4-19.6/9.8		RATING	40C AMB-CONT						
R.P.M.	1760									
HZ.	60		PH.	3		CLASS	F			
SER.F.	1.15		DES.	B		SL HZ	1.3			
NEMA NOM. EFF.	91.7		WK2	1.08						
DE	6307		ODE	6206						
MAG. CUR.	10/5									
INV TYPE	PWM	CHP	60	TO	90	T. CODE	T3C			
CT	3	TO	60	VT	3	TO	60			
CC	010A		SN							
USABLE AT 50 HZ 5 HP 190/380V										
16.8/8.4A										

AC Induction Motor Performance Data

Record # 84568

Typical performance - not guaranteed values

Winding: 07WGT456-R001		Type: 0744M	Enclosure: TEFC
Nameplate Data		460 V, 60 Hz: High Voltage Connection	
Rated Output (HP)	7.5	Full Load Torque	22.19 LB-FT
Volts	208-230/460	Start Configuration	direct on line
Full Load Amps	20.4-19.6/9.8	Breakdown Torque	63.85 LB-FT
R.P.M.	1760	Pull-up Torque	46.39 LB-FT
Hz	60 Phase	Locked-rotor Torque	63.42 LB-FT
NEMA Design Code	B KVA Code	Starting Current	65.58 A
Service Factor (S.F.)	1	No-load Current	4.78 A
NEMA Nom. Eff.	91.7 Power Factor	Line-line Res. @ 25°C	1.12 Ω
Rating - Duty	40C AMB-CONT	Temp. Rise @ Rated Load	54°C
		Locked-rotor Power Factor	37.7
		Rotor inertia	1.08 lb-ft ²

Load Characteristics 460 V, 60 Hz, 7.5 HP

% of Rated Load	25	50	75	100
Power Factor	39	60	71	78
Efficiency	86.7	91.4	92	91.8
Speed	1793	1786	1778	1770
Line amperes	5.29	6.47	8.06	9.82

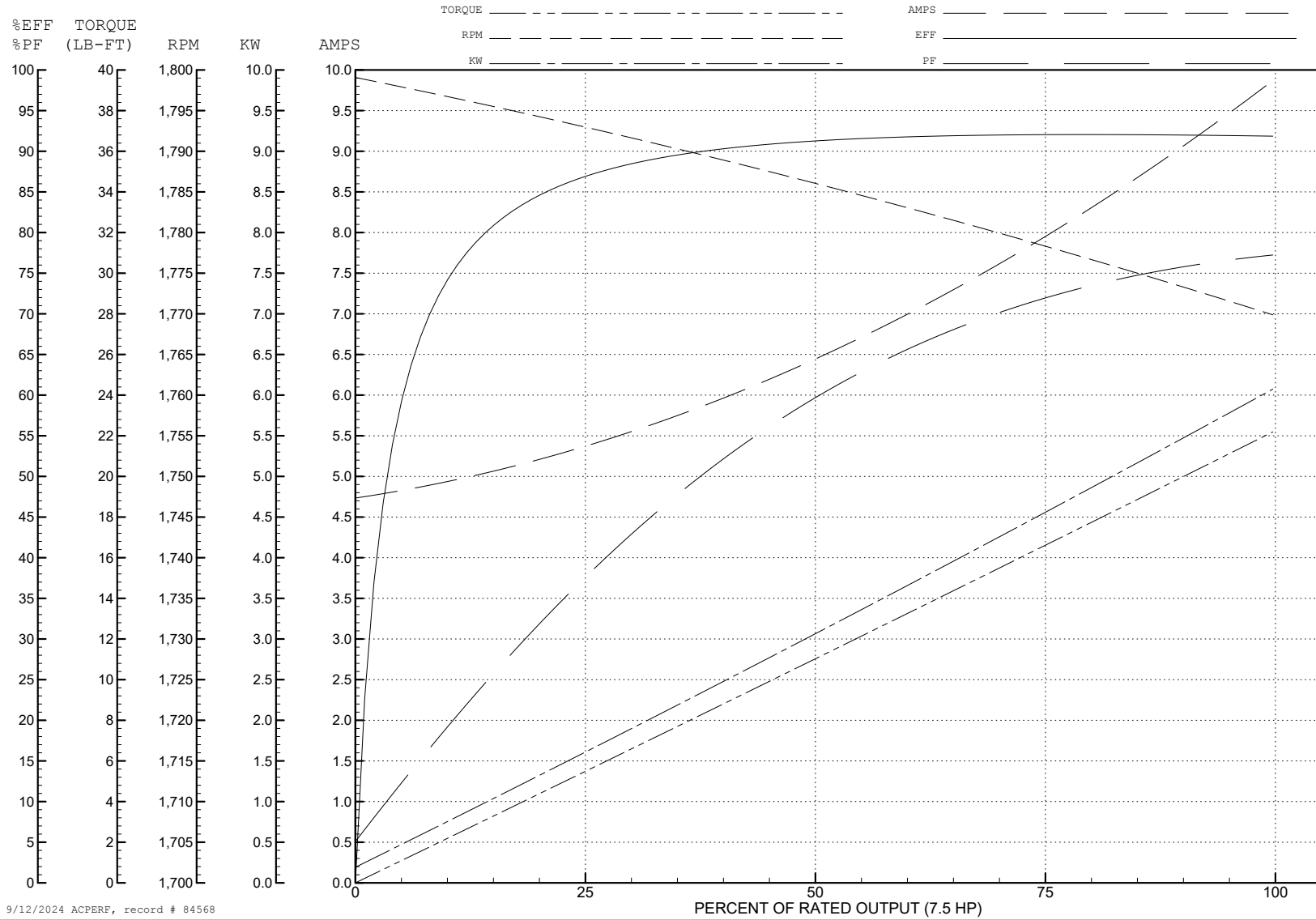
ABB Motors and Mechanical Inc.

WINDING # 07WGT456

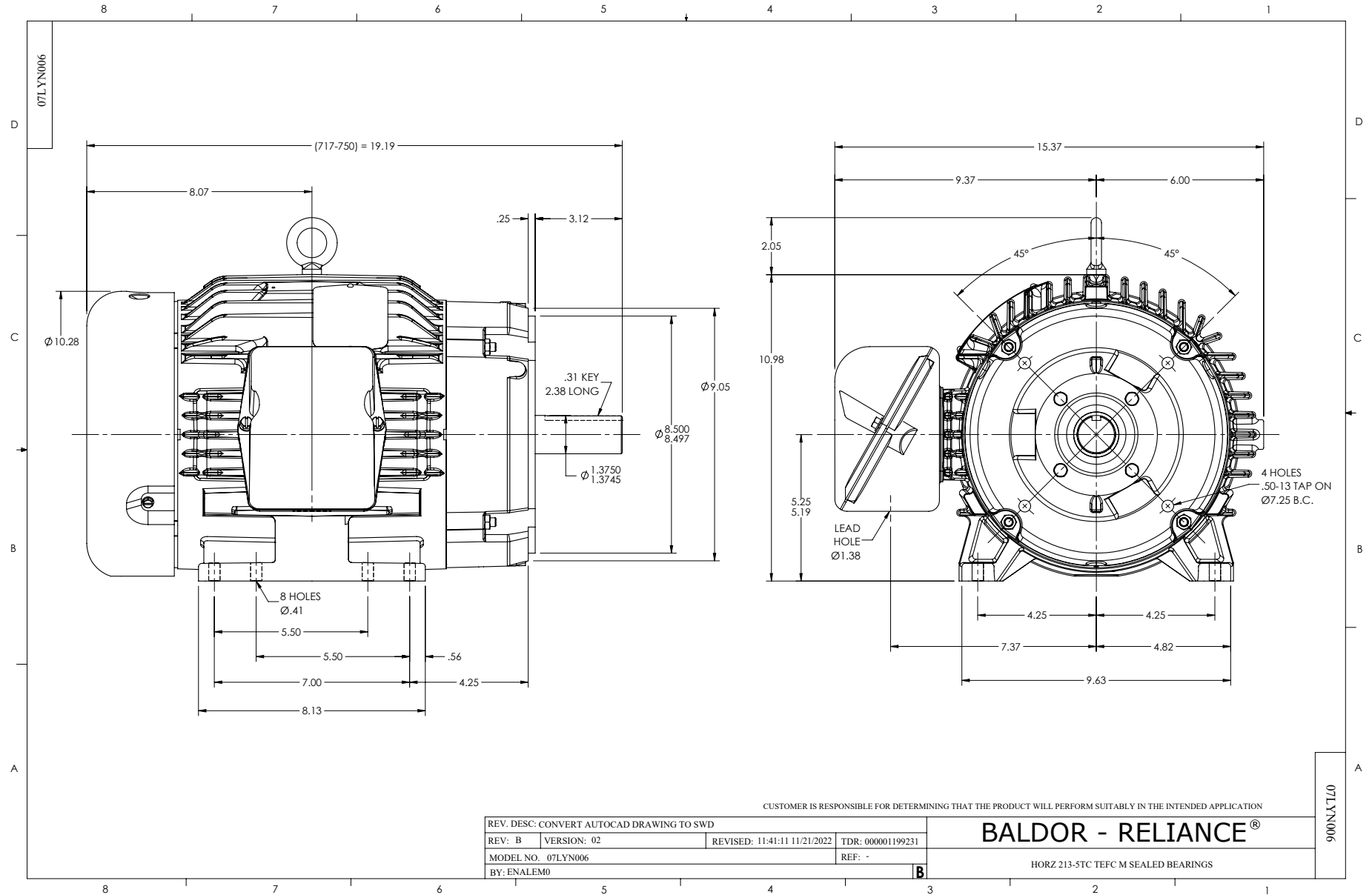
Typical performance - not guaranteed values.

7.5 HP 3 PH 60 HZ 1760 RPM 460 V 0744M

TORQUES (LB-FT) : PO=63.85 PU=46.39 LR=63.42 LRA=65.58



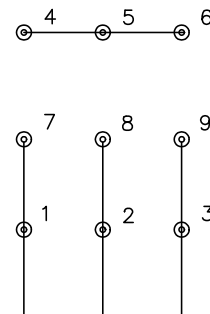
9/12/2024 ACPERF, record # 84568



CD0005



LOW VOLTAGE
(2Y)



LINE

HIGH VOLTAGE
(1Y)



LINE

NOTES:

1. INTERCHANGE ANY TWO LINE LEADS TO REVERSE ROTATION.
2. OPTIONAL THERMOSTATS ARE PROVIDED WHEN SPECIFIED.
3. ACTUAL NUMBER OF INTERNAL PARALLEL CIRCUITS MAY BE A MULTIPLE OF THOSE SHOWN ABOVE.
4. LEAD COLORS ARE OPTIONAL. LEADS MUST ALWAYS BE NUMBERED AS SHOWN.

REV. DESC: REVISE TO SHOW OPTIONAL COLORS			
REV. LTR: E	BY: JLP	REVISED: 01/19/99 10:15	TDR: 0171435
S00000		FILE: AAA00005140	MDL: -
		MTL: -	

BALDOR ELECTRIC Co.

3PH, DV, 9 LEADS

CD0005