



Customer information packet

CXT3052T

5HP, 3490RPM, 3PH, 60HZ, 184TC, 0632M, TEFC, F1

Class - CLI GP A,B,C,D

Division - Division II

Specifications

Enclosure	TEFC
Frame	184TC
Frame Material	Iron
Frequency	60.00 Hz
Motor Letter Type	Three Phase
Output @ Frequency	5.000 HP @ 60 HZ
Phase	3
Synchronous Speed @ Frequency	3600 RPM @ 60 HZ
Voltage @ Frequency	230.0 V @ 60 HZ 460.0 V @ 60 HZ
XP Class and Group	CLIP A,B,C,D
XP Division	Division II
Agency Approvals	CCSA US UR NEMA PREMIUM CSA EEV
Ambient Temperature	40 °C
Auxillary Box	No Auxillary Box
Auxillary Box Lead Termination	None
Base Indicator	Rigid
Bearing Grease Type	Polyrex EM (-20F +300F)
Blower	None
Constant Torque Speed Range	3
Current @ Voltage	11.400 A @ 230.0 V 12.000 A @ 208.0 V 5.700 A @ 460.0 V
Design Code	A
Drip Cover	No Drip Cover
Duty Rating	CONT
Efficiency @ 100% Load	90.2 %
Electrically Isolated Bearing	Not Electrically Isolated
Feedback Device	NO FEEDBACK

Part detail

Revision	A
Type	AC
Mech. spec.	
Base	
Status	PRD/A
Elec. spec.	06WGW730
Layout	06LYF921
Eff. date	09-19-2022
CD Diagram	CD0005
Poles	02
Leads	9#16
Proprietary	False
Created date	12-04-2020

Heater Indicator	No Heater
High Voltage Full Load Amps	5.7 a
Insulation Class	F
Inverter Code	Inverter Duty
IP Rating	NONE
KVA Code	M
Lifting Lugs	Standard Lifting Lugs
Locked Bearing Indicator	Locked Bearing
Motor Lead Termination	Flying Leads
Motor Standards	NEMA
Motor Type	0632M
Mounting Arrangement	F1
Number of Poles	2
Overall Length	15.98 IN
Power Factor	90
Product Family	General Purpose
Pulley Face Code	C-Face
Rodent Screen	None
Service Factor	1.15
Shaft Diameter	1.125 IN
Shaft Ground Indicator	No Shaft Grounding
Shaft Rotation	Reversible
Speed	3490 rpm
Speed Code	Single Speed
Starting Method	Direct on line
Thermal Device - Bearing	None
Thermal Device - Winding	None
Vibration Sensor Indicator	No Vibration Sensor
Winding Thermal 1	None
Winding Thermal 2	None
XP Temp Code	T3C

Nameplate

NP4163L									
CAT.NO.	CXT3052T				I.P.	54			
SPEC.	06-0000-0820				ENCL	TEFC			
FRAME	184TC	H.P.	5						
VOLTS	230/460	P.F.	90						
F.L. AMPS	11.4/5.7	RATING	40C AMB-CONT						
R.P.M.	3490	USABLE AT 208V	12						
HZ.	60	PH.	3	CLASS	F				
SER.F.	1.15	DES.	A	SL HZ	1.8				
NEMA NOM. EFF.	90.2	WK2	0.15						
DE	6206	ODE	6205						
MAG. CUR.	4/2								
INV TYPE	PWM	CHP	60	TO	90	T. CODE	T3C		
CT	3	TO	60	VT	3	TO	60		
CC	010A	SN							
USABLE AT 50 HZ 3 HP 190/380V									
8.8/4.4A									

AC Induction Motor Performance Data

Record # 47071

Typical performance - not guaranteed values

Winding: 06WGW730-R030		Type: 0632M		Enclosure: TEFC	
Nameplate Data			460 V, 60 Hz: High Voltage Connection		
Rated Output (HP)	5	Full Load Torque	7.54 LB-FT		
Volts	230/460	Start Configuration	direct on line		
Full Load Amps	11.4/5.7	Breakdown Torque	40.1 LB-FT		
R.P.M.	3490	Pull-up Torque	30.6 LB-FT		
Hz	60 Phase	3	Locked-rotor Torque	36.9 LB-FT	
NEMA Design Code	A KVA Code	M	Starting Current	64.8 A	
Service Factor (S.F.)	1.15	No-load Current	2.08 A		
NEMA Nom. Eff.	90.2 Power Factor	90	Line-line Res. @ 25°C	1.93 Ω	
Rating - Duty	40C AMB-CONT	Temp. Rise @ Rated Load	51°C		
S.F. Amps		Temp. Rise @ S.F. Load	62°C		

Load Characteristics 460 V, 60 Hz, 5 HP

% of Rated Load	25	50	75	100	125	150	S.F.
Power Factor	55	76	85	90	93	93	92
Efficiency	84.5	89.4	90.8	90.6	90	89	90.2
Speed	3570	3544	3517	3489	3458	3426	3470
Line amperes	2.54	3.47	4.6	5.76	7.03	8.46	6.52

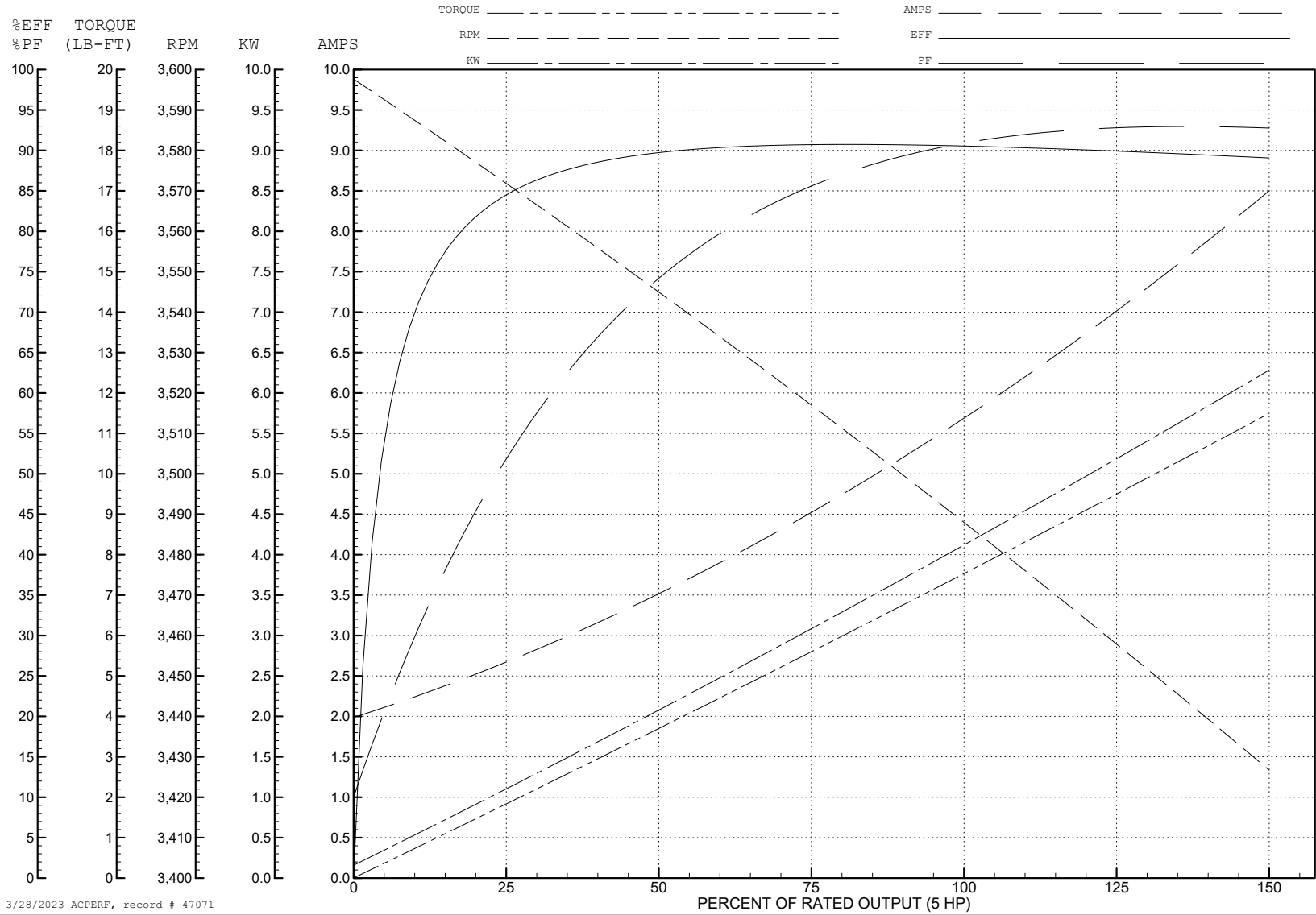
ABB Motors and Mechanical Inc.

WINDING # 06WGW730

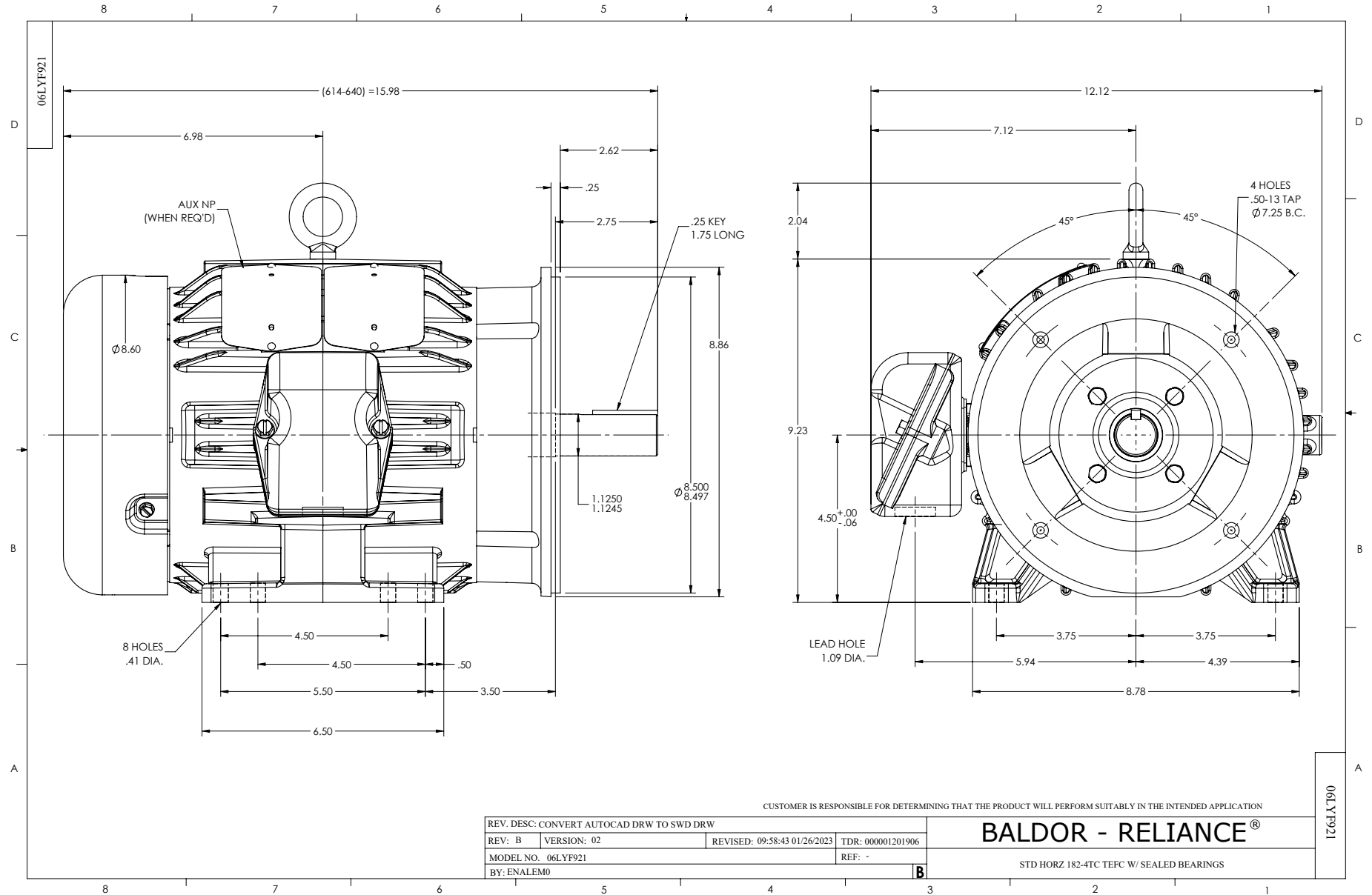
Typical performance - not guaranteed values.

5 HP 3 PH 60 HZ 3490 RPM 460 V 0632M

TORQUES (LB-FT): PO=40.1 PU=30.6 LR=36.9 LRA=64.8



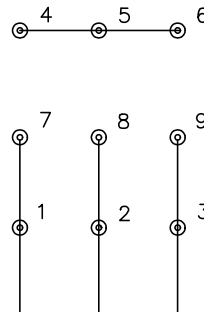
3/28/2023 ACPERF, record # 47071



CD0005

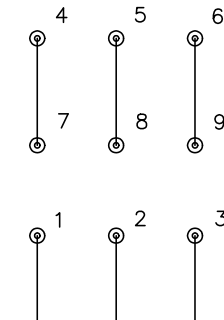


LOW VOLTAGE
(2Y)



LINE

HIGH VOLTAGE
(1Y)



LINE

NOTES:

1. INTERCHANGE ANY TWO LINE LEADS TO REVERSE ROTATION.
2. OPTIONAL THERMOSTATS ARE PROVIDED WHEN SPECIFIED.
3. ACTUAL NUMBER OF INTERNAL PARALLEL CIRCUITS MAY BE A MULTIPLE OF THOSE SHOWN ABOVE.
4. LEAD COLORS ARE OPTIONAL. LEADS MUST ALWAYS BE NUMBERED AS SHOWN.

CD0005

REV. DESC: REVISE TO SHOW OPTIONAL COLORS			
REV. LTR: E	BY: JLP	REVISED: 01/19/99 10:15	TDR: 0171435
S00000		FILE: AAA00005140	MDL: -
		MTL: -	

BALDOR ELECTRIC Co.

3PH, DV, 9 LEADS