



Customer information packet

CXT3036T

3HP, 1165RPM, 3PH, 60HZ, 213TC, 0738M, TEFC, F1

Class - CLI GP A,B,C,D

Division - Division II

Specifications

Enclosure	TEFC
Frame	213TC
Frame Material	Iron
Frequency	60.00 Hz
Haz Area Class and Group	CL I GP A,B,C,D
Haz Area Division	Division II
Motor Letter Type	Three Phase
Output @ Frequency	3.000 HP @ 60 HZ
Phase	3
Synchronous Speed @ Frequency	1200 RPM @ 60 HZ
Voltage @ Frequency	460.0 V @ 60 HZ 208.0 V @ 60 HZ 230.0 V @ 60 HZ
Agency Approvals	UR CCSA US NEMA_PREMIUM NEMA PREMIUM CSA EEV
Ambient Temperature	40 °C
Auxillary Box	No Auxillary Box
Auxillary Box Lead Termination	None
Base Indicator	Rigid
Bearing Grease Type	Polyrex EM (-20F +300F)
Blower	None
Constant Torque Speed Range	3
Current @ Voltage	4.500 A @ 460.0 V 9.000 A @ 230.0 V 9.300 A @ 208.0 V
Design Code	B
Drip Cover	No Drip Cover
Duty Rating	CONT
Efficiency @ 100% Load	90.2 %

Part detail

Revision	D
Type	AC
Mech. spec.	
Base	
Status	PRD/A
Elec. spec.	07WGX822
Layout	07LYN006
Eff. date	06-28-2024
CD Diagram	CD0005
Poles	06
Leads	9#14
Proprietary	False
Created date	12-03-2020

Electrically Isolated Bearing	Not Electrically Isolated
Feedback Device	NO FEEDBACK
Haz Area Temp Code	T3C
Heater Indicator	No Heater
High Voltage Full Load Amps	4.5 a
Insulation Class	F
Inverter Code	Inverter Duty
IP Rating	NONE
KVA Code	K
Lifting Lugs	Standard Lifting Lugs
Locked Bearing Indicator	Locked Bearing
Motor Lead Termination	Flying Leads
Motor Standards	NEMA
Motor Type	0738M
Mounting Arrangement	F1
Number of Poles	6
Overall Length	19.20 IN
Power Factor	70
Product Family	General Purpose
Pulley Face Code	C-Face
Rodent Screen	None
Service Factor	1.15
Shaft Diameter	1.375 IN
Shaft Ground Indicator	No Shaft Grounding
Shaft Rotation	Reversible
Speed	1165 rpm
Speed Code	Single Speed
Starting Method	Direct on line
Thermal Device - Bearing	None
Thermal Device - Winding	None
Vibration Sensor Indicator	No Vibration Sensor
Winding Thermal 1	None
Winding Thermal 2	None

Nameplate

NP4163L										
CAT.NO.	CXT3036T					I.P.	54			
SPEC.	07-0000-0939					ENCL	TEFC			
FRAME	213TC		H.P.	3						
VOLTS	208-230/460		P.F.	70						
F.L. AMPS	9.3-9/4.5		RATING	40C AMB-CONT						
R.P.M.	1165									
HZ.	60		PH.	3		CLASS	F			
SER.F.	1.15		DES.	B		SL HZ	1.7			
NEMA NOM. EFF.	90.2		WK2	0.945						
DE	6307		ODE	6206						
MAG. CUR.	4.6/2.3									
INV TYPE	PWM	CHP	60	TO	90	T. CODE	T3C			
CT	3	TO	60	VT	3	TO	60			
CC	010A		SN							
USABLE AT 50 HZ 2.5HP 190/380V										
9/4.5A										

AC Induction Motor Performance Data

Record # 22164

Typical performance - not guaranteed values

Winding: 07WGX822-R001		Type: 0738M	Enclosure: TEFC
Nameplate Data		460 V, 60 Hz: High Voltage Connection	
Rated Output (HP)	3	Full Load Torque	13.48 LB-FT
Volts	230/460	Start Configuration	direct on line
Full Load Amps	9.0/4.5	Breakdown Torque	45.99 LB-FT
R.P.M.	1165	Pull-up Torque	30.06 LB-FT
Hz	60 Phase	Locked-rotor Torque	33.92 LB-FT
NEMA Design Code	B KVA Code	Starting Current	31.45 A
Service Factor (S.F.)	1.15	No-load Current	2.32 A
NEMA Nom. Eff.	90.2 Power Factor	Line-line Res. @ 25°C	2.62 Ω
Rating - Duty	40C AMB-CONT	Temp. Rise @ Rated Load	31°C
S.F. Amps		Temp. Rise @ S.F. Load	37°C
		Locked-rotor Power Factor	22.7
		Rotor inertia	0.945 LB-FT ²

Load Characteristics 460 V, 60 Hz, 3 HP

% of Rated Load	25	50	75	100	125	150	S.F.
Power Factor	33	52	63	69	73	75	72
Efficiency	83.3	88.8	90.8	90.3	89.4	87.6	89.6
Speed	1191	1184	1176	1169	1159	1146	1162
Line amperes	2.59	3.08	3.72	4.49	5.37	6.39	5

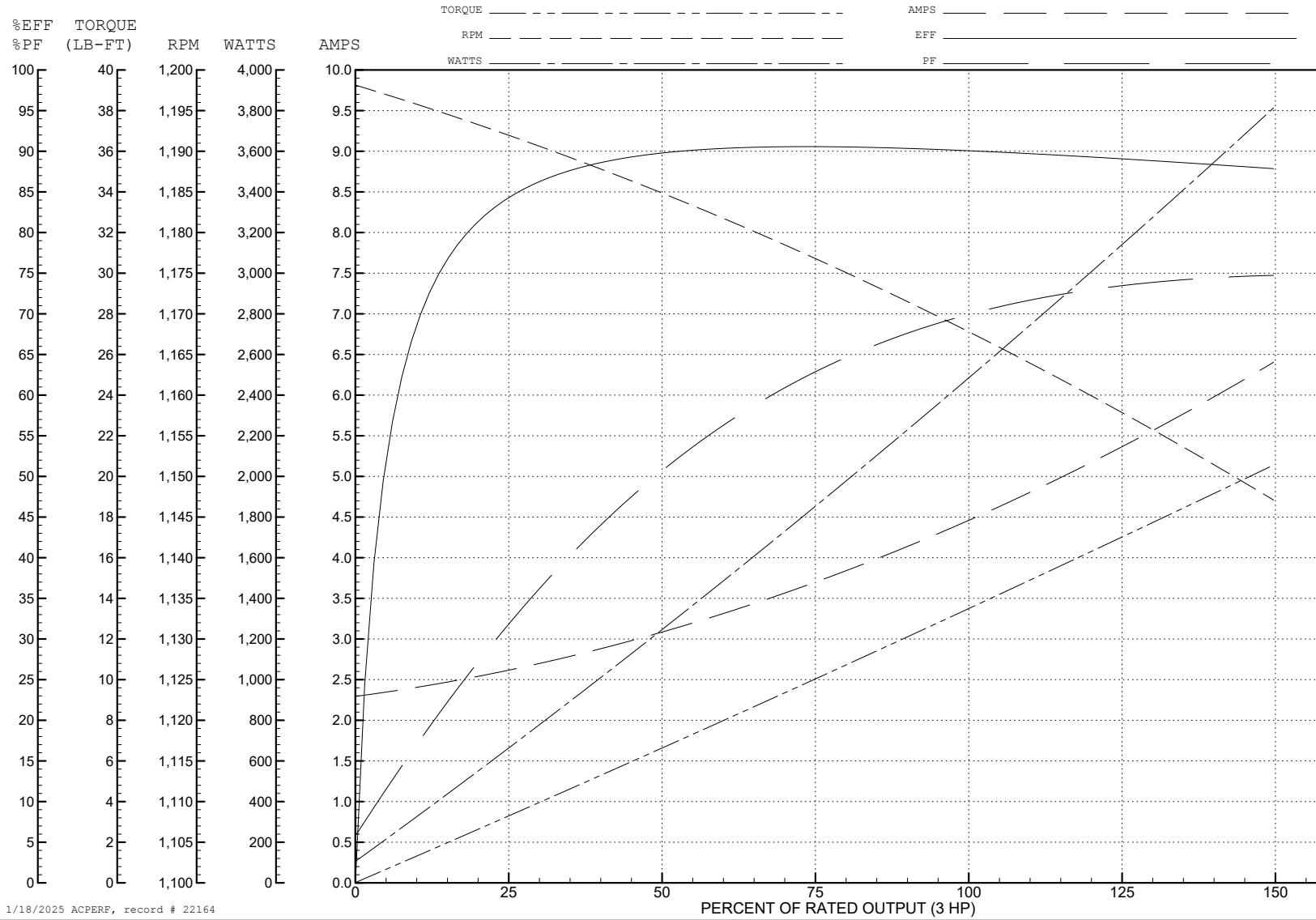
ABB Motors and Mechanical Inc.

WINDING # 07WGX822

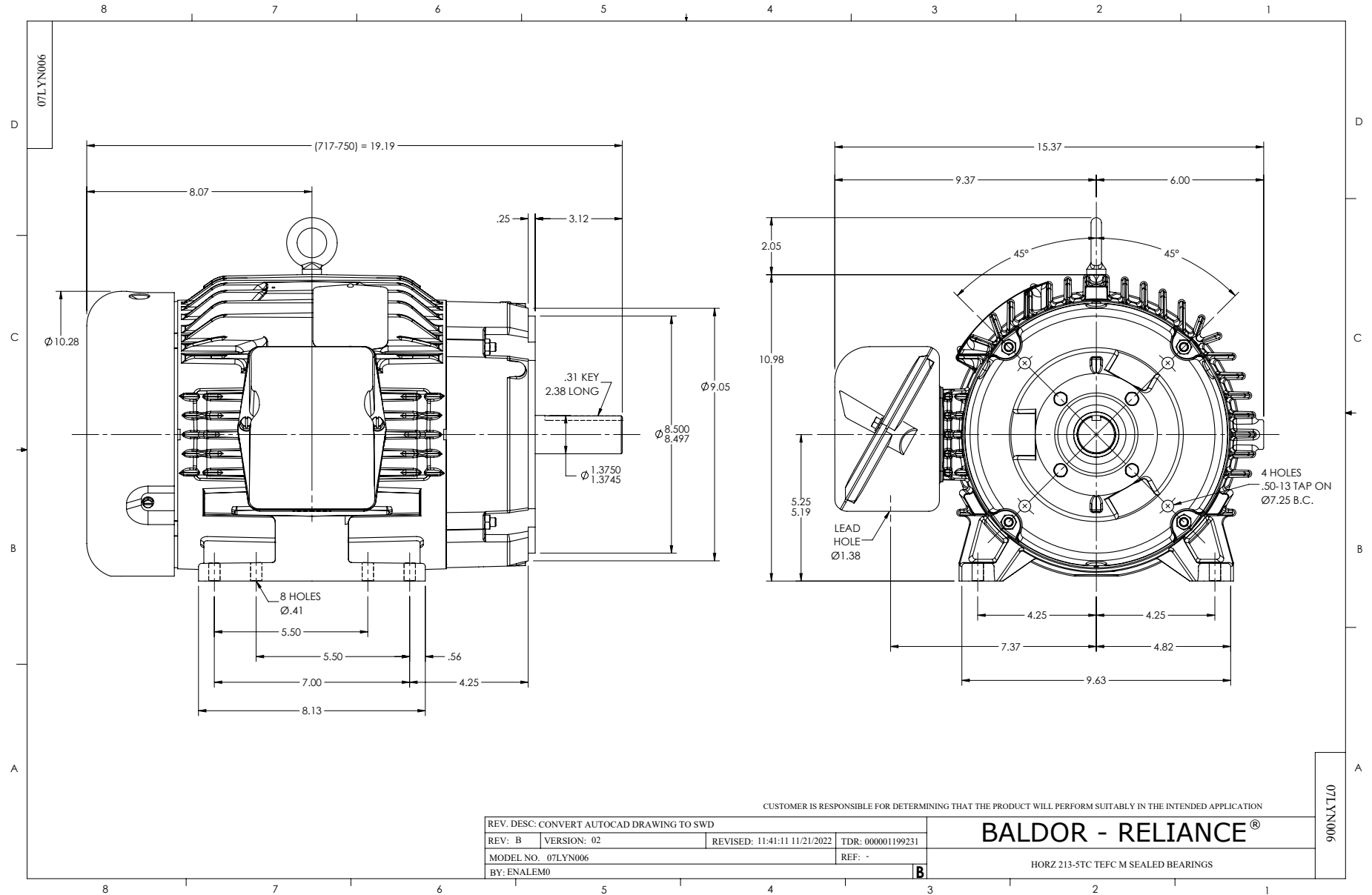
Typical performance - not guaranteed values.

3 HP 3 PH 60 HZ 1165 RPM 460 V 0738M

TORQUES (LB-FT): PO=45.99 PU=30.06 LR=33.92 LRA=31.45



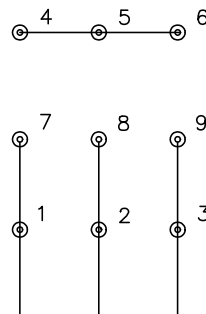
1/18/2025 ACPERF, record # 22164



CD0005

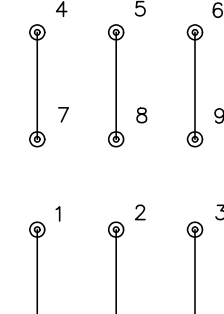


LOW VOLTAGE
(2Y)



LINE

HIGH VOLTAGE
(1Y)



LINE

NOTES:

1. INTERCHANGE ANY TWO LINE LEADS TO REVERSE ROTATION.
2. OPTIONAL THERMOSTATS ARE PROVIDED WHEN SPECIFIED.
3. ACTUAL NUMBER OF INTERNAL PARALLEL CIRCUITS MAY BE A MULTIPLE OF THOSE SHOWN ABOVE.
4. LEAD COLORS ARE OPTIONAL. LEADS MUST ALWAYS BE NUMBERED AS SHOWN.

CD0005

REV. DESC: REVISE TO SHOW OPTIONAL COLORS			
REV. LTR: E	BY: JLP	REVISED: 01/19/99 10:15	TDR: 0171435
S00000		FILE: AAA00005140	MDL: -
		MTL: -	

BALDOR ELECTRIC Co.

3PH, DV, 9 LEADS