



Customer information packet

CXT30156T

1.5HP, 1170RPM, 3PH, 60HZ, 182TC, 0630M, TEFC

Class - CLI GP A,B,C,D

Division - Division II

Specifications

| | |
|--------------------------------|---|
| Enclosure | TEFC |
| Frame | 182TC |
| Frame Material | Iron |
| Frequency | 60.00 Hz |
| Haz Area Class and Group | CL I GP A,B,C,D |
| Haz Area Division | Division II |
| Motor Letter Type | Three Phase |
| Output @ Frequency | 1.500 HP @ 60 HZ |
| Phase | 3 |
| Synchronous Speed @ Frequency | 1200 RPM @ 60 HZ |
| Voltage @ Frequency | 460.0 V @ 60 HZ 208.0 V @ 60 HZ 230.0 V @ 60 HZ |
| Agency Approvals | UR CCSA US NEMA_PREMIUM NEMA PREMIUM CSA EEV |
| Ambient Temperature | 40 °C |
| Auxillary Box | No Auxillary Box |
| Auxillary Box Lead Termination | None |
| Base Indicator | Rigid |
| Bearing Grease Type | Polyrex EM (-20F +300F) |
| Blower | None |
| Constant Torque Speed Range | 3 |
| Current @ Voltage | 2.500 A @ 460.0 V 5.000 A @ 230.0 V 5.200 A @ 208.0 V |
| Design Code | B |
| Drip Cover | No Drip Cover |
| Duty Rating | CONT |
| Efficiency @ 100% Load | 87.5 % |

Part detail

| | |
|--------------|------------|
| Revision | B |
| Type | AC |
| Mech. spec. | |
| Base | |
| Status | PRD/A |
| Elec. spec. | 06WGW969 |
| Layout | 06LYF921 |
| Eff. date | 06-28-2024 |
| CD Diagram | CD0005 |
| Poles | 06 |
| Leads | 9#16 |
| Proprietary | False |
| Created date | 12-03-2020 |

| Electrically Isolated Bearing | Not Electrically Isolated |
|-------------------------------|---------------------------|
| Feedback Device | NO FEEDBACK |
| Haz Area Temp Code | T3C |
| Heater Indicator | No Heater |
| High Voltage Full Load Amps | 2.5 a |
| Insulation Class | F |
| Inverter Code | Inverter Duty |
| IP Rating | NONE |
| KVA Code | K |
| Lifting Lugs | Standard Lifting Lugs |
| Locked Bearing Indicator | Locked Bearing |
| Motor Lead Termination | Flying Leads |
| Motor Standards | NEMA |
| Motor Type | 0630M |
| Mounting Arrangement | F1 |
| Number of Poles | 6 |
| Overall Length | 15.98 IN |
| Power Factor | 65 |
| Product Family | General Purpose |
| Pulley Face Code | C-Face |
| Rodent Screen | None |
| Service Factor | 1.15 |
| Shaft Diameter | 1.125 IN |
| Shaft Ground Indicator | No Shaft Grounding |
| Shaft Rotation | Reversible |
| Speed | 1170 rpm |
| Speed Code | Single Speed |
| Starting Method | Direct on line |
| Thermal Device - Bearing | None |
| Thermal Device - Winding | None |
| Vibration Sensor Indicator | No Vibration Sensor |
| Winding Thermal 1 | None |
| Winding Thermal 2 | None |

Nameplate

| NP4163L | | | | | | | | | | |
|------------------------------|--------------|------------|---------------|--------------|-----------|--------------|------|----------------|-----|--|
| CAT.NO. | CXT30156T | | | | | I.P. | 54 | | | |
| SPEC. | 06-0000-0808 | | | | | ENCL | TEFC | | | |
| FRAME | 182TC | | H.P. | 1.5 | | | | | | |
| VOLTS | 208-230/460 | | P.F. | 65 | | | | | | |
| F.L. AMPS | 5.2-5/2.5 | | RATING | 40C AMB-CONT | | | | | | |
| R.P.M. | 1170 | | | | | | | | | |
| HZ. | 60 | | PH. | 3 | | CLASS | F | | | |
| SER.F. | 1.15 | | DES. | B | | SL HZ | 1.5 | | | |
| NEMA NOM. EFF. | 87.5 | | WK2 | 0.282 | | | | | | |
| DE | 6206 | | ODE | 6205 | | | | | | |
| MAG. CUR. | 3.2/1.6 | | | | | | | | | |
| INV TYPE | PWM | CHP | 60 | | TO | 90 | | T. CODE | T3C | |
| CT | 3 | TO | 60 | | VT | 3 | | TO | 60 | |
| CC | 010A | | SN | | | | | | | |
| USABLE AT 50 HZ 1HP 190/380V | | | | | | | | | | |
| 4.4/2.2A | | | | | | | | | | |

AC Induction Motor Performance Data

Record # 47055

Typical performance - not guaranteed values

| Winding: 06WGW969-R015 | | Type: 0630M | | Enclosure: TEFC | |
|-------------------------------|--------------------------|----------------------------|--|------------------------|--|
| Nameplate Data | | | 460 V, 60 Hz: High Voltage Connection | | |
| Rated Output (HP) | 1.5 | Full Load Torque | 6.77 LB-FT | | |
| Volts | 208-230/460 | Start Configuration | direct on line | | |
| Full Load Amps | 5.2-5/2.5 | Breakdown Torque | 24 LB-FT | | |
| R.P.M. | 1170 | Pull-up Torque | 12.5 LB-FT | | |
| Hz | 60 Phase | 3 | Locked-rotor Torque | 15.8 LB-FT | |
| NEMA Design Code | B KVA Code | K | Starting Current | 16.19 A | |
| Service Factor (S.F.) | | 1.15 | No-load Current | 1.63 A | |
| NEMA Nom. Eff. | 87.5 Power Factor | 65 | Line-line Res. @ 25°C | 7.34 Ω | |
| Rating - Duty | | 40C AMB-CONT | Temp. Rise @ Rated Load | 26°C | |
| S.F. Amps | | | Temp. Rise @ S.F. Load | 32°C | |

Load Characteristics 460 V, 60 Hz, 1.5 HP

| % of Rated Load | 25 | 50 | 75 | 100 | 125 | 150 | S.F. |
|------------------------|-----------|-----------|-----------|------------|------------|------------|-------------|
| Power Factor | 27 | 44 | 56 | 65 | 69 | 73 | 67 |
| Efficiency | 76.9 | 85 | 87.1 | 87.6 | 87 | 86 | 87.2 |
| Speed | 1193.7 | 1186.9 | 1179.4 | 1171.7 | 1163.1 | 1152.9 | 1167 |
| Line amperes | 1.7 | 1.9 | 2.18 | 2.51 | 2.92 | 3.38 | 2.76 |

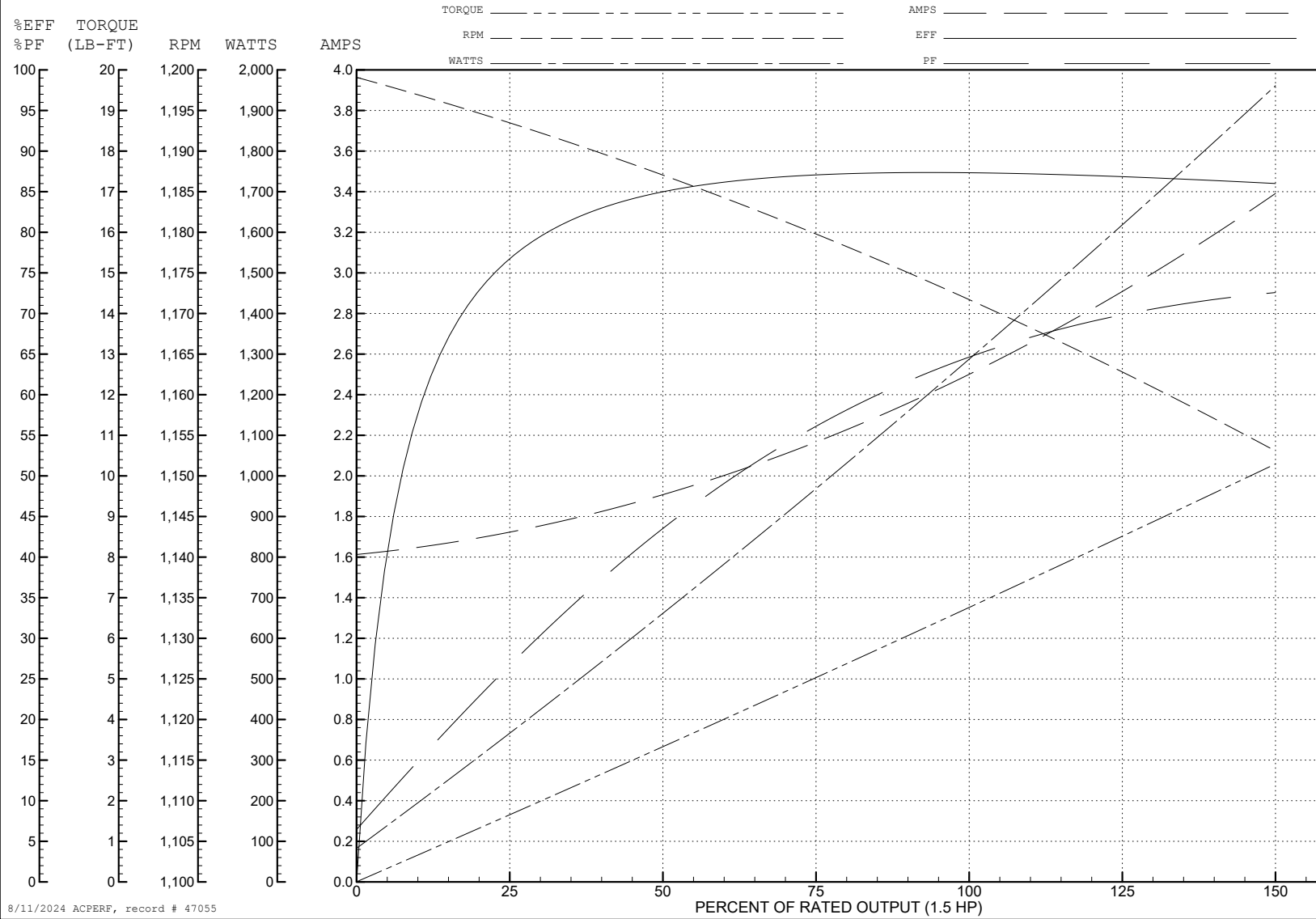
ABB Motors and Mechanical Inc.

WINDING # 06WGW969

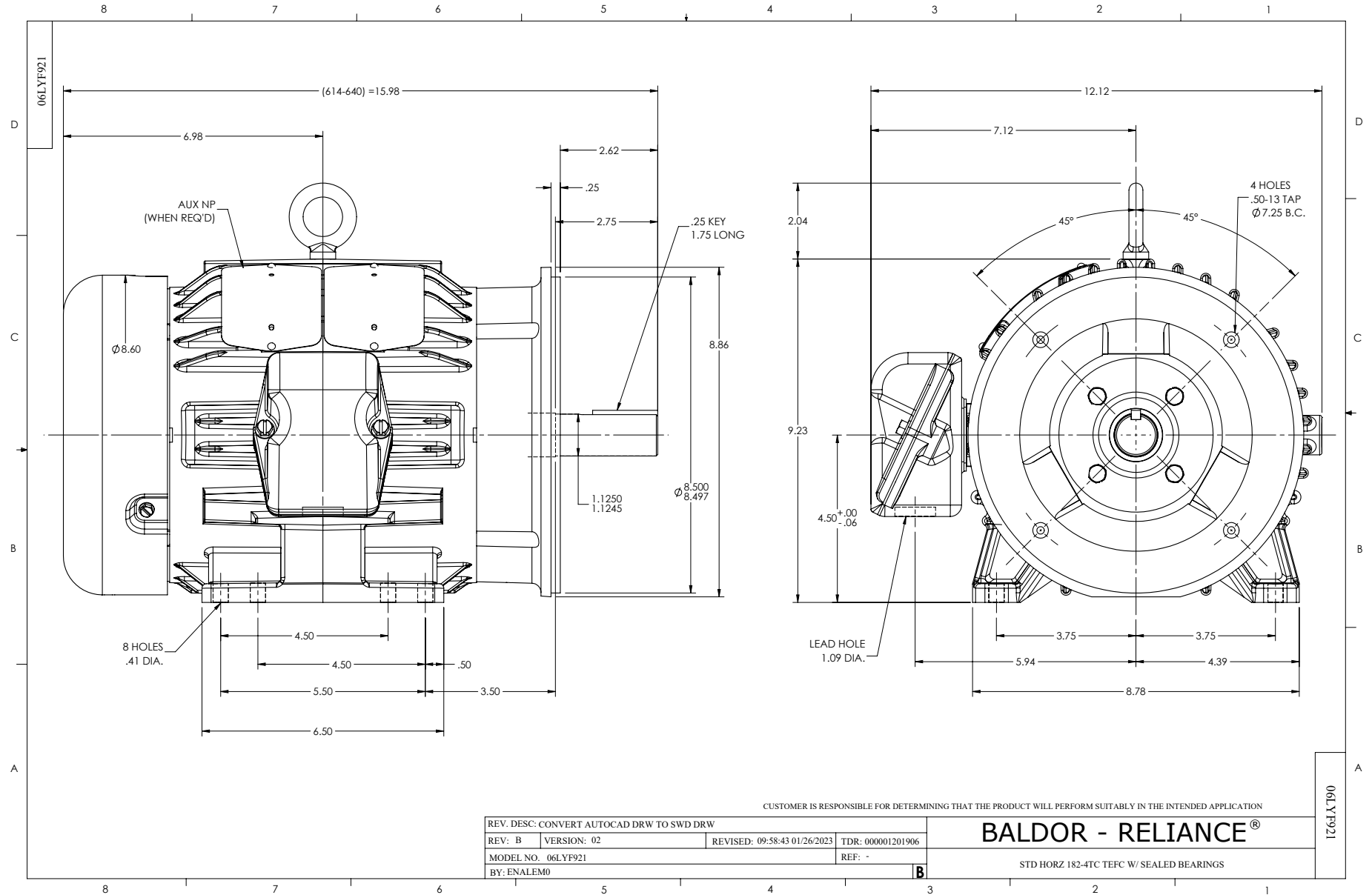
Typical performance - not guaranteed values.

1.5 HP 3 PH 60 HZ 1170 RPM 460 V 0630M

TORQUES (LB-FT): PO=24 PU=12.5 LR=15.8 LRA=16.19



8/11/2024 ACPERF, record # 47055



CD0005

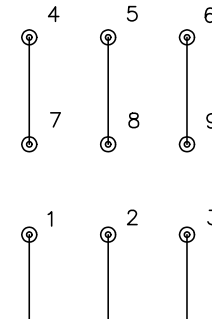


LOW VOLTAGE
(2Y)



LINE

HIGH VOLTAGE
(1Y)



LINE

NOTES:

1. INTERCHANGE ANY TWO LINE LEADS TO REVERSE ROTATION.
2. OPTIONAL THERMOSTATS ARE PROVIDED WHEN SPECIFIED.
3. ACTUAL NUMBER OF INTERNAL PARALLEL CIRCUITS MAY BE A MULTIPLE OF THOSE SHOWN ABOVE.
4. LEAD COLORS ARE OPTIONAL. LEADS MUST ALWAYS BE NUMBERED AS SHOWN.

CD0005

| | | | |
|---|---------|-------------------------|--------------|
| REV. DESC: REVISE TO SHOW OPTIONAL COLORS | | | |
| REV. LTR: E | BY: JLP | REVISED: 01/19/99 10:15 | TDR: 0171435 |
| S00000 | | FILE: AAA00005140 | MDL: - |
| | | MTL: - | |

BALDOR ELECTRIC Co.

3PH, DV, 9 LEADS