

BALDOR • RELIANCE

Customer information packet

CXM18522T

5//3HP, 3450//2900RPM, 3PH, 60//50HZ, 184TC

Class - CLI GP D; CLII GP F,G

Division - Division I

Specifications

Enclosure	XPFC
Frame	184TC
Frame Material	Steel
Frequency	50.00 Hz 60.00 Hz
Haz Area Class and Group	CLI GP D; CLII GP F,G
Haz Area Division	Division I
Motor Letter Type	Three Phase
Output @ Frequency	3.000 HP @ 50 HZ 5.000 HP @ 60 HZ
Phase	3
Synchronous Speed @ Frequency	3600 RPM @ 60 HZ
Voltage @ Frequency	380.0 V @ 50 HZ 230.0 V @ 60 HZ 190.0 V @ 50 HZ 460.0 V @ 60 HZ
Agency Approvals	CSA EEV UL
Ambient Temperature	40 °C
Auxillary Box	No Auxillary Box
Auxillary Box Lead Termination	None
Base Indicator	Rigid
Bearing Grease Type	Polyrex EM (-20F +300F)
Blower	None
Constant Torque Speed Range	6
Current @ Voltage	8.800 A @ 190.0 V 5.900 A @ 460.0 V 4.400 A @ 380.0 V 12.000 A @ 208.0 V 11.800 A @ 230.0 V
Design Code	A
Drip Cover	No Drip Cover

Part detail

Revision	-
Type	AC
Mech. spec.	
Base	
Status	PRD/A
Elec. spec.	36WGS042
Layout	36LYK919
Eff. date	02-23-2021
CD Diagram	CD0005
Poles	02
Leads	9#16
Proprietary	False
Created date	02-17-2021

Duty Rating	CONT
Efficiency @ 100% Load	88.5 %
Electrically Isolated Bearing	Not Electrically Isolated
Feedback Device	NO FEEDBACK
Frame Prefix	RL
Haz Area Temp Code	T3C
Heater Indicator	No Heater
High Voltage Full Load Amps	4.4 a
Insulation Class	F
Inverter Code	Inverter Duty
IP Rating	NONE
KVA Code	L
Lifting Lugs	No Lifting Lugs
Locked Bearing Indicator	Locked Bearing
Max Speed	5400 rpm
Motor Lead Termination	Flying Leads
Motor Standards	NEMA
Motor Type	3630M
Mounting Arrangement	F1
Number of Poles	2
Overall Length	18.86 IN
Power Factor	91
Product Family	General Purpose
Pulley Face Code	C-Face
Rodent Screen	None
Service Factor	1.15
Shaft Diameter	1.125 IN
Shaft Ground Indicator	No Shaft Grounding
Shaft Rotation	Reversible
Speed	3450 rpm
Speed Code	Single Speed
Starting Method	Direct on line
Thermal Device - Bearing	None
Thermal Device - Winding	Normally Closed Thermostat

Vibration Sensor Indicator	No Vibration Sensor
Winding Thermal 1	None
Winding Thermal 2	None

Nameplate

NP0887XPSLEV

NO.		CC	010A		
S/N		TEMP CODE	T3C		
SPEC.	36-0000-0467	INV.TYPE	PWM		
CAT.NO.	CXM18522T	C HP FR	60	C HP TO	90
HP	5//3	CT HZ FROM	6	CT HZ TO	60
VOLTS	230/460//190/380	VT HZ FROM	6	VT HZ TO	60
AMPS	11.8/5.9//8.8/4.4	MAG CUR	3.4/1.7		
RPM	3450//2900	MX RPM	5400		
HZ	60//50	PH	3	CL	F
		NOM.EFF.	88.5		
SER.F.	1.00	DES	A	SL HZ	2.3
		WK2	0.14		
FRAME	184TC	RATING	40C AMB-CONT		
	NEMA MG-1 PART 5, IP54				
	1.15 SF ON SINE WAVE				

AC Induction Motor Performance Data

Record # 49265

Typical performance - not guaranteed values

Winding: 36WGS042-R049		Type: 3630M	Enclosure: TEFC
Nameplate Data			460 V, 60 Hz: High Voltage Connection
Rated Output (HP)	5//3	Full Load Torque	7.67 LB-FT
Volts	230/460//190/380	Start Configuration	direct on line
Full Load Amps	11.8/5.9//9/4.5	Breakdown Torque	33.7 LB-FT
R.P.M.	3450//2900	Pull-up Torque	23.5 LB-FT
Hz	60//50 Phase	Locked-rotor Torque	27.5 LB-FT
NEMA Design Code	A KVA Code	Starting Current	57.2 A
Service Factor (S.F.)	1.15	No-load Current	1.68 A
NEMA Nom. Eff.	88.5 Power Factor	Line-line Res. @ 25°C	2.26 Ω
Rating - Duty	40C AMB-CONT	Temp. Rise @ Rated Load	72°C
S.F. Amps		Temp. Rise @ S.F. Load	88°C
		Locked-rotor Power Factor	45.1
		Rotor inertia	0.134 LB-FT ²

Load Characteristics 460 V, 60 Hz, 5 HP

% of Rated Load	25	50	75	100	125	150	S.F.
Power Factor	62	81	88	91	93	94	92
Efficiency	84.1	88.9	89.4	88.7	87.3	85.8	87.9
Speed	3569	3537	3504	3466	3428	3385	3443
Line amperes	2.24	3.26	4.47	5.85	7.26	8.8	6.7

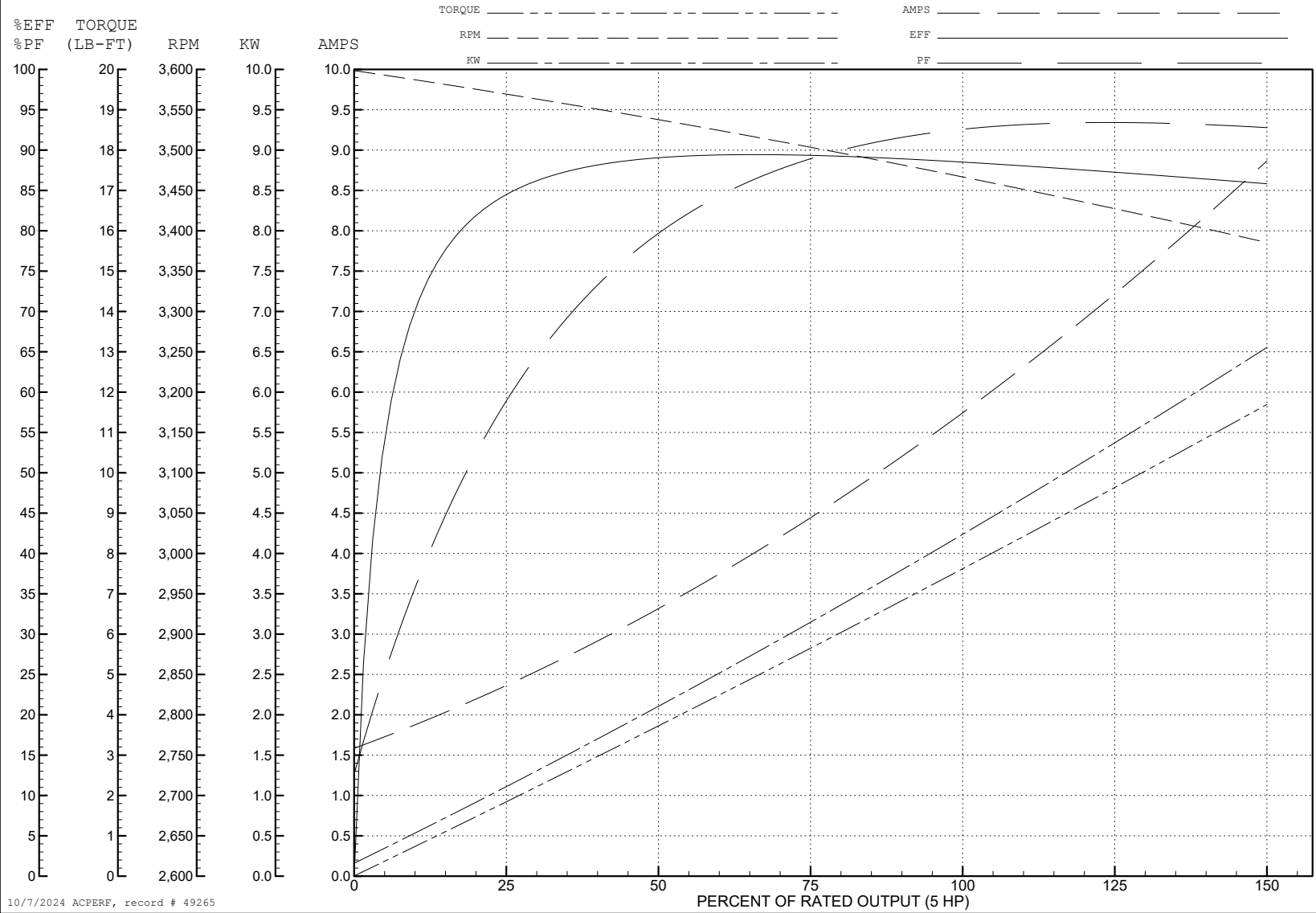
ABB Motors and Mechanical Inc.

WINDING # 36WGS042

5 HP 3 PH 60 HZ 3466 RPM 460 V 3630M

Typical performance - not guaranteed values.

TORQUES (LB-FT): PO=33.7 PU=23.5 LR=27.5 LRA=57.2



10/7/2024 ACPERF, record # 49265

AC Induction Motor Performance Data

Record # 49266

Typical performance - not guaranteed values

Winding: 36WGS042-R049		Type: 3630M	Enclosure: TEFC		
Nameplate Data			380 V, 50 Hz: High Voltage Connection		
Rated Output (HP)	5//3		Full Load Torque	5.5 LB-FT	
Volts	230/460//190/380		Start Configuration	direct on line	
Full Load Amps	11.8/5.9//8.8/4.4		Breakdown Torque	31.6 LB-FT	
R.P.M.	3450//2900		Pull-up Torque	25 LB-FT	
Hz	60//50	Phase	3	Locked-rotor Torque	29.2 LB-FT
NEMA Design Code	A	KVA Code	L	Starting Current	54.3 A
Service Factor (S.F.)	1.15		No-load Current	1.64 A	
NEMA Nom. Eff.	88.5	Power Factor	91	Line-line Res. @ 25°C	2.26 Ω
Rating - Duty	40C AMB-CONT		Temp. Rise @ Rated Load	48°C	
S.F. Amps			Temp. Rise @ S.F. Load	58°C	
			Locked-rotor Power Factor	51.3	
			Rotor inertia	0.134 LB-FT ²	

Load Characteristics 380 V, 50 Hz, 3 HP

% of Rated Load	25	50	75	100	125	150	S.F.
Power Factor	53	74	84	88	91	92	90
Efficiency	80.5	86.8	88.3	88.1	87.1	86.1	87.5
Speed	2976	2953	2928	2899	2871	2840	2882
Line amperes	1.99	2.66	3.48	4.42	5.39	6.45	5

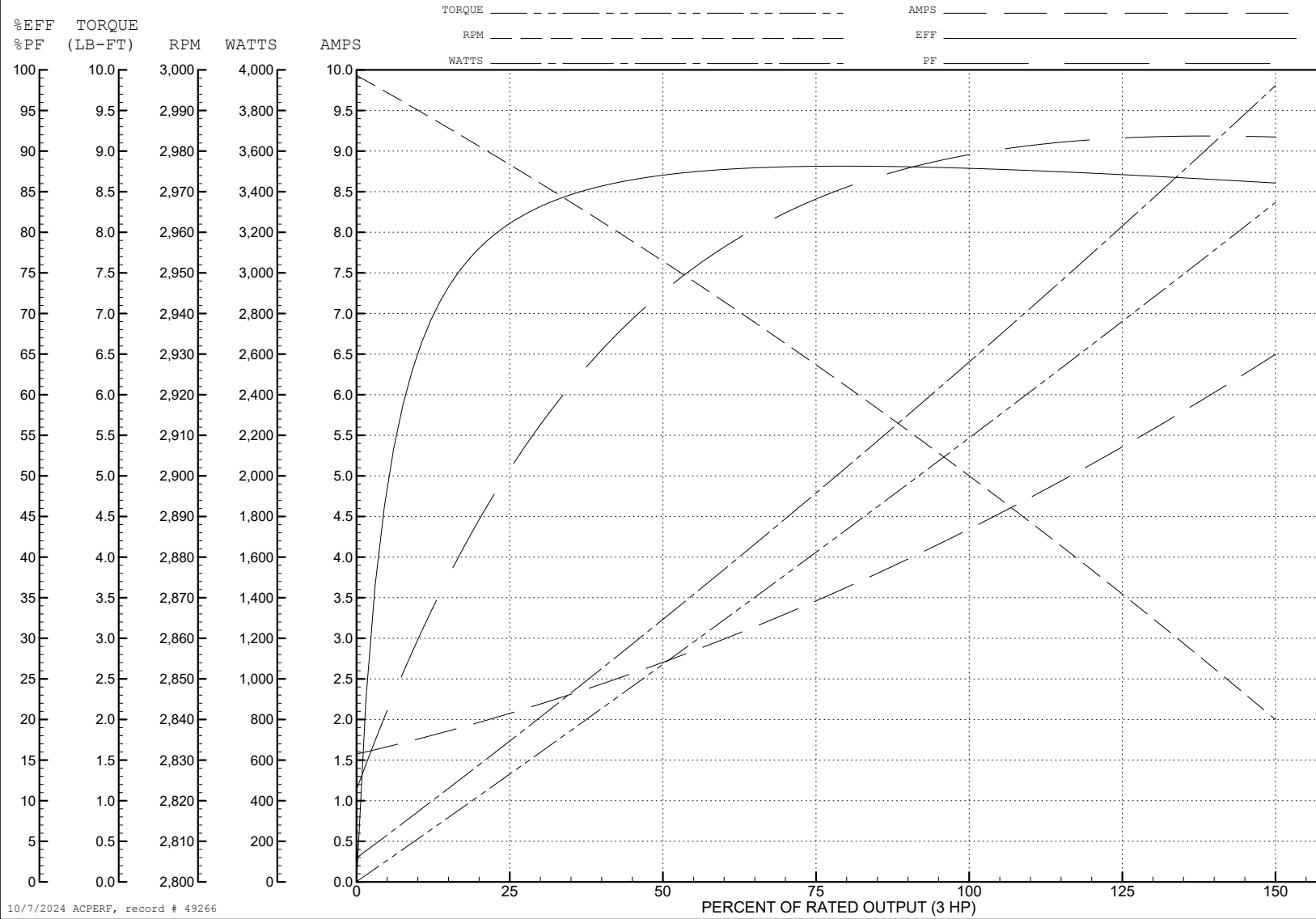
ABB Motors and Mechanical Inc.

WINDING # 36WGS042

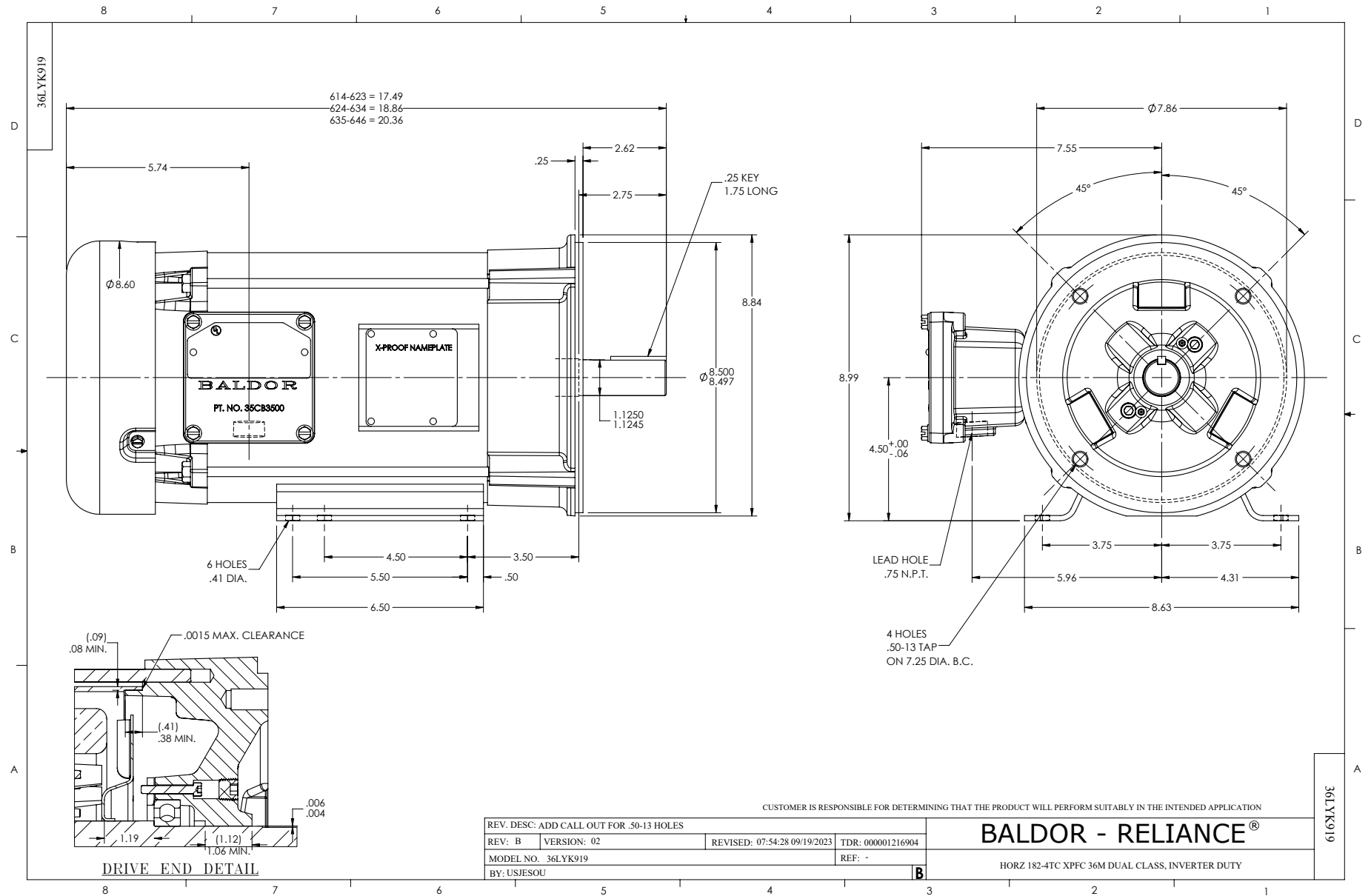
3 HP 3 PH 50 HZ 2899 RPM 380 V 3630M

Typical performance - not guaranteed values.

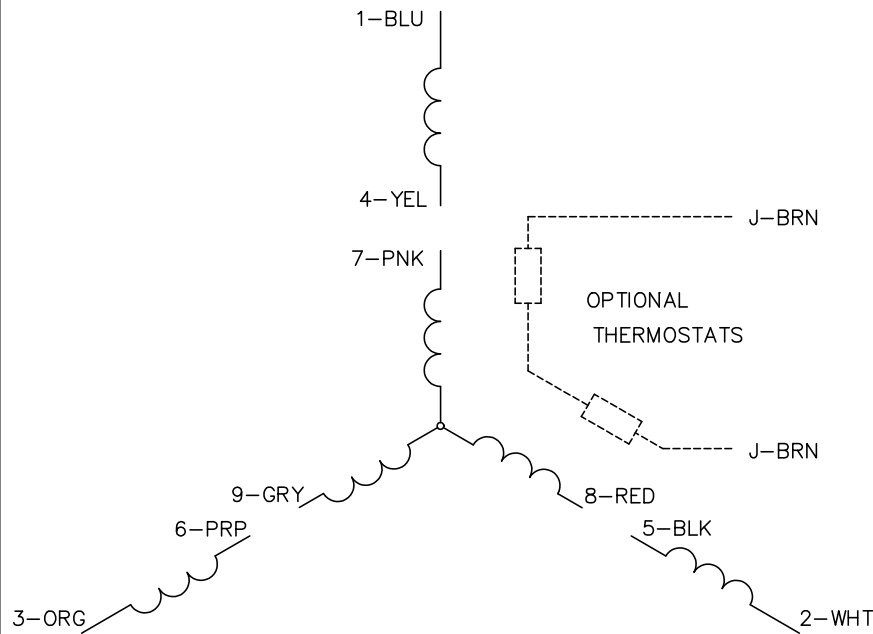
TORQUES (LB-FT): PO=31.6 PU=25 LR=29.2 LRA=54.3



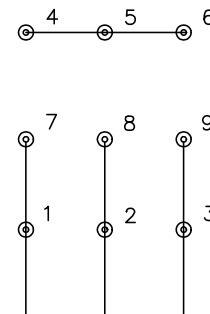
10/7/2024 ACPERF, record # 49266



CD0005

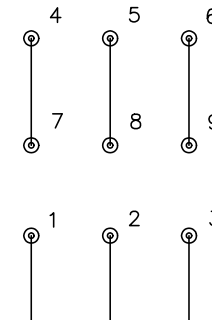


LOW VOLTAGE
(2Y)



LINE

HIGH VOLTAGE
(1Y)



LINE

NOTES:

1. INTERCHANGE ANY TWO LINE LEADS TO REVERSE ROTATION.
2. OPTIONAL THERMOSTATS ARE PROVIDED WHEN SPECIFIED.
3. ACTUAL NUMBER OF INTERNAL PARALLEL CIRCUITS MAY BE A MULTIPLE OF THOSE SHOWN ABOVE.
4. LEAD COLORS ARE OPTIONAL. LEADS MUST ALWAYS BE NUMBERED AS SHOWN.

REV. DESC: REVISE TO SHOW OPTIONAL COLORS			
REV. LTR: E	BY: JLP	REVISED: 01/19/99 10:15	TDR: 0171435
S00000		FILE: AAA00005140	MDL: -
		MTL: -	

BALDOR ELECTRIC Co.

3PH, DV, 9 LEADS

CD0005