

BALDOR • RELIANCE

Customer information packet

CXM14222T

2//1.5HP, 3490//2890RPM, 3PH, 60//50HZ, 145T

Class - CLI GP D; CLII GP F,G

Division - Division I

Specifications

Enclosure	XPFC
Frame	145TC
Frame Material	Steel
Frequency	50.00 Hz 60.00 Hz
Motor Letter Type	Three Phase
Output @ Frequency	2.000 HP @ 60 HZ 1.500 HP @ 50 HZ
Phase	3
Synchronous Speed @ Frequency	3600 RPM @ 60 HZ
Voltage @ Frequency	460.0 V @ 60 HZ 190.0 V @ 50 HZ 230.0 V @ 60 HZ 380.0 V @ 50 HZ
XP Class and Group	CLI GP D; CLII GP F,G
XP Division	Division I
Agency Approvals	UL CSA EEV
Ambient Temperature	40 °C
Auxillary Box	No Auxillary Box
Auxillary Box Lead Termination	None
Base Indicator	Rigid
Bearing Grease Type	Polyrex EM (-20F +300F)
Blower	None
Constant Torque Speed Range	6
Current @ Voltage	2.300 A @ 380.0 V 2.500 A @ 460.0 V 4.600 A @ 190.0 V 5.000 A @ 230.0 V
Design Code	B
Drip Cover	No Drip Cover
Duty Rating	CONT

Part detail

Revision	A
Type	AC
Mech. spec.	
Base	
Status	PRD/A
Elec. spec.	35WGM774
Layout	35LYE377
Eff. date	10-21-2022
CD Diagram	CD0005
Poles	02
Leads	9#18
Proprietary	False
Created date	02-04-2021

Efficiency @ 100% Load	85.5 %
Electrically Isolated Bearing	Not Electrically Isolated
Feedback Device	NO FEEDBACK
Heater Indicator	No Heater
High Voltage Full Load Amps	2.3 a
Insulation Class	F
Inverter Code	Inverter Duty
IP Rating	NONE
KVA Code	M
Lifting Lugs	No Lifting Lugs
Locked Bearing Indicator	Locked Bearing
Max Speed	5400 rpm
Motor Lead Termination	Flying Leads
Motor Standards	NEMA
Motor Type	3526M
Mounting Arrangement	F1
Number of Poles	2
Overall Length	15.21 IN
Power Factor	88
Product Family	General Purpose
Pulley Face Code	C-Face
Rodent Screen	None
Service Factor	1.00
Shaft Diameter	0.875 IN
Shaft Ground Indicator	No Shaft Grounding
Shaft Rotation	Reversible
Speed	3490 rpm
Speed Code	Single Speed
Starting Method	Direct on line
Thermal Device - Bearing	None
Thermal Device - Winding	Normally Closed Thermostat
Vibration Sensor Indicator	No Vibration Sensor
Winding Thermal 1	None
Winding Thermal 2	None

XP Temp Code

T3C

Nameplate

NP0887XPSLEV

NO.		CC	010A		
S/N		TEMP CODE	T3C		
SPEC.	35-0000-1005	INV.TYPE	PWM		
CAT.NO.	CXM14222T	C HP FR	60	C HP TO	90
HP	2//1.5	CT HZ FROM	6	CT HZ TO	60
VOLTS	230/460//190/380	VT HZ FROM	6	VT HZ TO	60
AMPS	5/2.5//4.6/2.3	MAG CUR	1.8/.9		
RPM	3490//2890	MX RPM	5400		
HZ	60//50	PH	3	CL	F
		NOM.EFF.	85.5		
SER.F.	1.00	DES	B	SL HZ	1.8
		WK2	0.07		
FRAME	145TC	RATING	40C AMB-CONT		
	NEMA MG-1 PART 5, IP54				
	1.15 SF ON SINE WAVE				

AC Induction Motor Performance Data

Record # 76613

Typical performance - not guaranteed values

Winding: 35WGM774-R025		Type: 3526M		Enclosure: TEFC	
Nameplate Data			460 V, 60 Hz: High Voltage Connection		
Rated Output (HP)	2	Full Load Torque	2.98 LB-FT		
Volts	230/460//190/380	Start Configuration	direct on line		
Full Load Amps	5/2.5//4.6/2.3	Breakdown Torque	14.2 LB-FT		
R.P.M.	3490//2890	Pull-up Torque	6.33 LB-FT		
Hz	60//50 Phase	Locked-rotor Torque	11.2 LB-FT		
NEMA Design Code	B KVA Code	Starting Current	25.9 A		
Service Factor (S.F.)	1	No-load Current	0.912 A		
NEMA Nom. Eff.	85.5 Power Factor	Line-line Res. @ 25°C	6.88 Ω		
Rating - Duty	40C AMB-CONT	Temp. Rise @ Rated Load	44°C		
		Locked-rotor Power Factor	49.9		
		Rotor inertia	0.0719 LB-FT ²		

Load Characteristics 460 V, 60 Hz, 2 HP

% of Rated Load	25	50	75	100	125	150
Power Factor	55	75	84	88	90	91
Efficiency	73.4	83.6	85.7	86.3	85.7	84.6
Speed	3572	3547	3520	3492	3461	3426
Line amperes	1.1	1.47	1.93	2.44	3	3.61

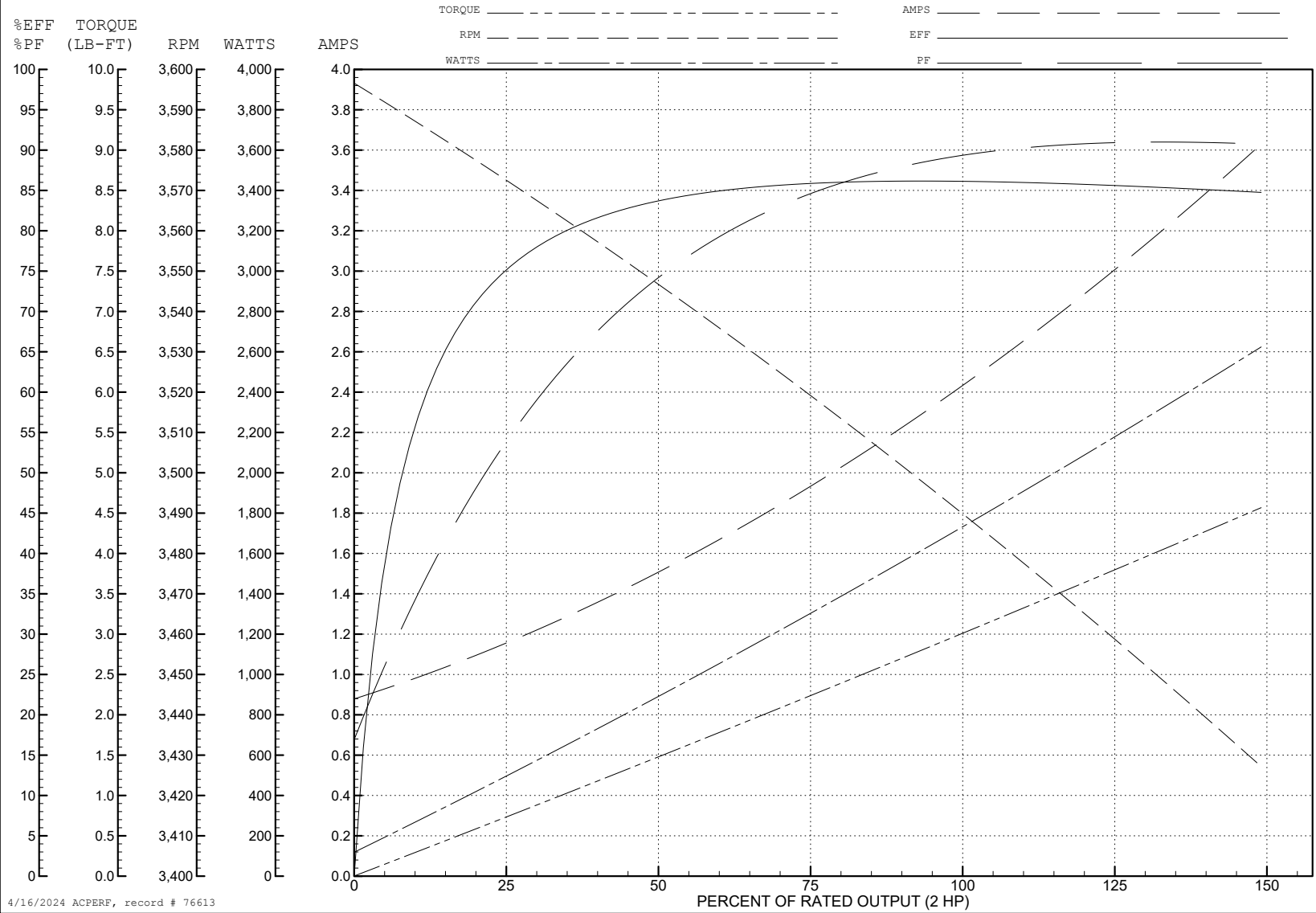
ABB Motors and Mechanical Inc.

WINDING # 35WGM774

2 HP 3 PH 60 HZ 3492 RPM 460 V 3526M

Typical performance - not guaranteed values.

TORQUES (LB-FT): PO=14.2 PU=6.33 LR=11.2 LRA=25.9



4/16/2024 ACPERF, record # 76613

AC Induction Motor Performance Data

Record # 76614

Typical performance - not guaranteed values

Winding: 35WGM774-R025		Type: 3526M	Enclosure: TEFC	
Nameplate Data			380 V, 50 Hz: High Voltage Connection	
Rated Output (HP)	2	Full Load Torque	2.69 LB-FT	
Volts	230/460//190/380	Start Configuration	direct on line	
Full Load Amps	5/2.5//4.6/2.3	Breakdown Torque	13.16 LB-FT	
R.P.M.	3490//2890	Pull-up Torque	6.62 LB-FT	
Hz	60//50 Phase	Locked-rotor Torque	11.71 LB-FT	
NEMA Design Code	B KVA Code	Starting Current	24.37 A	
Service Factor (S.F.)	1	No-load Current	0.898 A	
NEMA Nom. Eff.	85.5 Power Factor	Line-line Res. @ 25°C	6.88 Ω	
Rating - Duty	40C AMB-CONT	Temp. Rise @ Rated Load	39°C	
		Locked-rotor Power Factor	56.4	
		Rotor inertia	0.0719 LB-FT ²	

Load Characteristics 380 V, 50 Hz, 1.5 HP

% of Rated Load	25	50	75	100	125	150
Power Factor	53	74	83	87	90	91
Efficiency	70.4	81.5	84	84.5	84.2	83
Speed	2973	2950	2925	2899	2871	2838
Line amperes	1.07	1.4	1.81	2.28	2.78	3.35

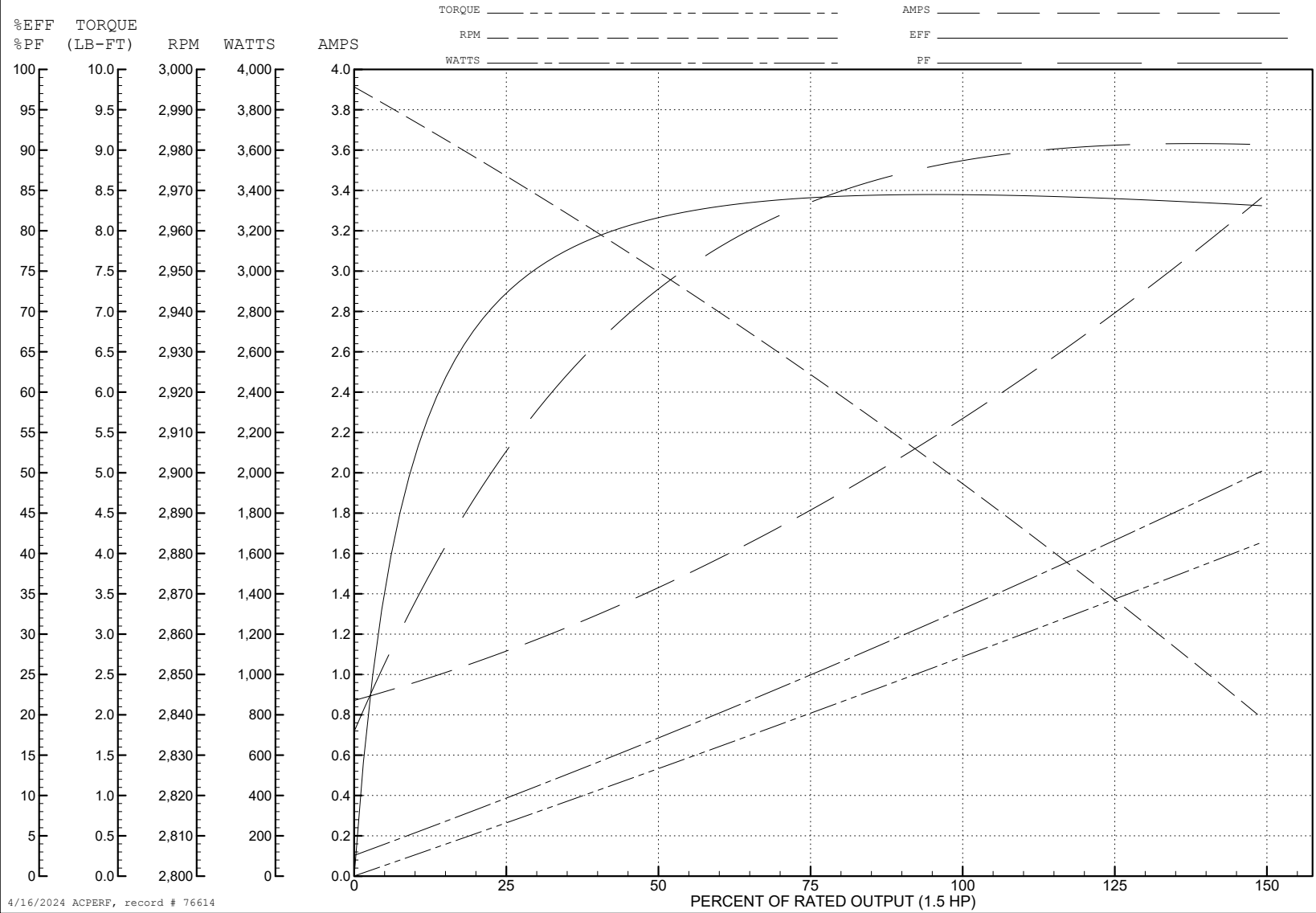
ABB Motors and Mechanical Inc.

WINDING # 35WGM774

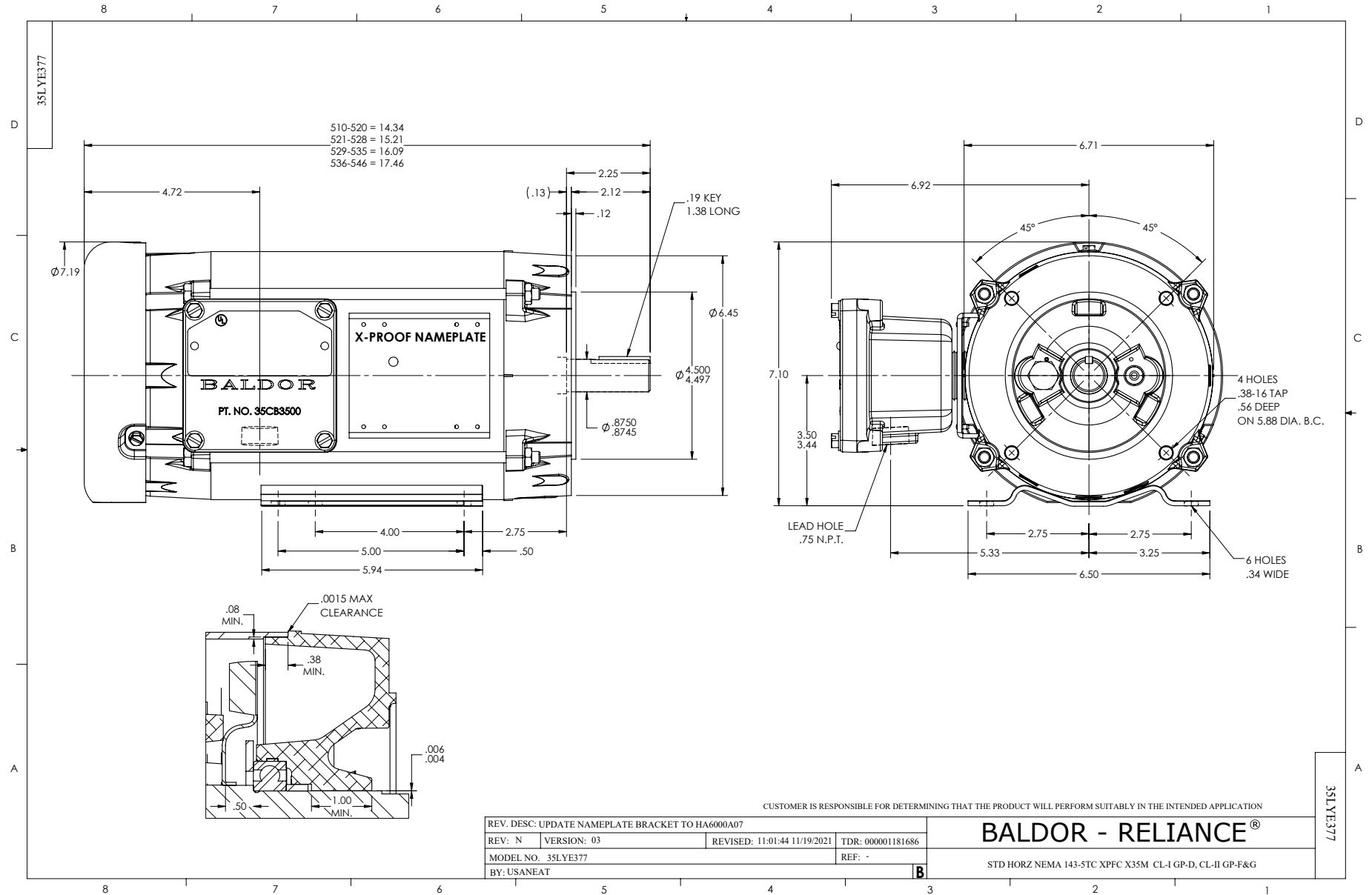
1.5 HP 3 PH 50 HZ 2899 RPM 380 V 3526M

Typical performance - not guaranteed values.

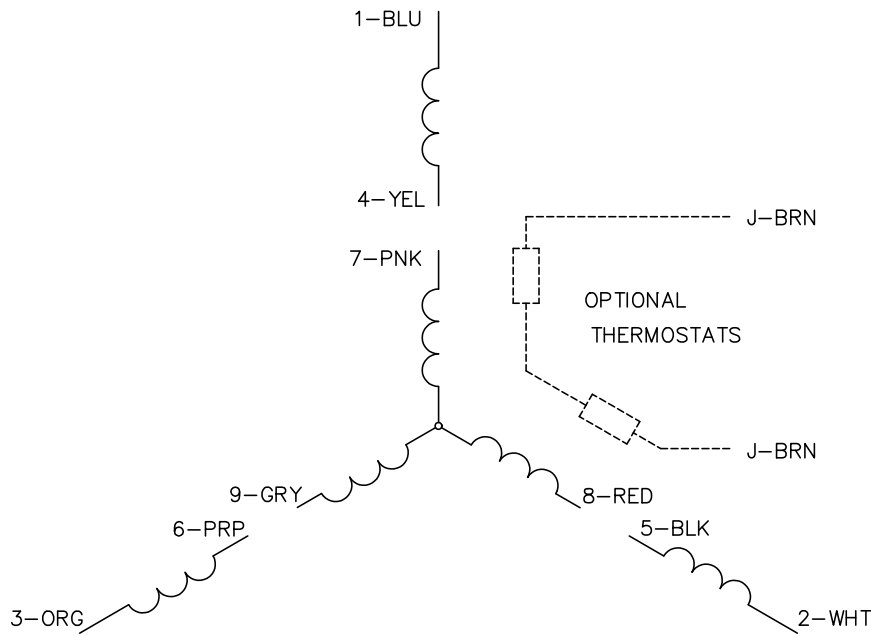
TORQUES (LB-FT): PO=13.16 PU=6.62 LR=11.71 LRA=24.37



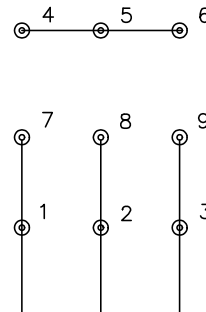
4/16/2024 ACPERF, record # 76614



CD0005

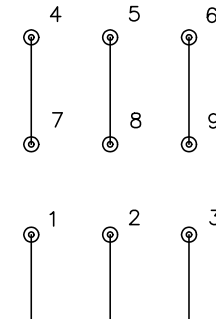


LOW VOLTAGE
(2Y)



LINE

HIGH VOLTAGE
(1Y)



LINE

NOTES:

1. INTERCHANGE ANY TWO LINE LEADS TO REVERSE ROTATION.
2. OPTIONAL THERMOSTATS ARE PROVIDED WHEN SPECIFIED.
3. ACTUAL NUMBER OF INTERNAL PARALLEL CIRCUITS MAY BE A MULTIPLE OF THOSE SHOWN ABOVE.
4. LEAD COLORS ARE OPTIONAL. LEADS MUST ALWAYS BE NUMBERED AS SHOWN.

CD0005

REV. DESC: REVISE TO SHOW OPTIONAL COLORS			
REV. LTR: E	BY: JLP	REVISED: 01/19/99 10:15	TDR: 0171435
S00000		FILE: AAA00005140	MDL: -
		MTL: -	

BALDOR ELECTRIC Co.

3PH, DV, 9 LEADS