

BALDOR • RELIANCE

Customer information packet

CXM05142

1//.75HP, 1770//1475RPM, 3PH, 60//50HZ, 56C

Class - CLI GP D; CLII GP F,G

Division - Division I

Specifications

| | |
|--------------------------------|-------------------------------------------------------------------------------------------------------|
| Enclosure | XPFC |
| Frame | 56C |
| Frame Material | Steel |
| Frequency | 50.00 Hz 60.00 Hz |
| Haz Area Class and Group | CLI GP D; CLII GP F,G |
| Haz Area Division | Division I |
| Motor Letter Type | Three Phase |
| Output @ Frequency | .750 HP @ 50 HZ 1.000 HP @ 60 HZ |
| Phase | 3 |
| Synchronous Speed @ Frequency | 1800 RPM @ 60 HZ |
| Voltage @ Frequency | 230.0 V @ 60 HZ 190.0 V @ 50 HZ 460.0 V @ 60 HZ 380.0 V @ 50 HZ |
| Agency Approvals | CSA EEV UL |
| Ambient Temperature | 40 °C |
| Auxillary Box | No Auxillary Box |
| Auxillary Box Lead Termination | None |
| Base Indicator | Rigid |
| Bearing Grease Type | Polyrex EM (-20F +300F) |
| Blower | None |
| Constant Torque Speed Range | 6 |
| Current @ Voltage | 3.200 A @ 208.0 V 3.200 A @ 230.0 V 3.080 A @ 190.0 V 1.600 A @ 460.0 V 1.540 A @ 380.0 V |
| Design Code | B |
| Drip Cover | No Drip Cover |

Part detail

| | |
|--------------|------------|
| Revision | C |
| Type | AC |
| Mech. spec. | |
| Base | |
| Status | PRD/A |
| Elec. spec. | 35WGG004 |
| Layout | 35LYE368 |
| Eff. date | 01-10-2023 |
| CD Diagram | CD0005 |
| Poles | 04 |
| Leads | 9#18 |
| Proprietary | False |
| Created date | 10-28-2021 |

| | |
|--------------------------------------|----------------------------|
| Duty Rating | CONT |
| Efficiency @ 100% Load | 85.5 % |
| Electrically Isolated Bearing | Not Electrically Isolated |
| Feedback Device | NO FEEDBACK |
| Haz Area Temp Code | T3C |
| Heater Indicator | No Heater |
| High Voltage Full Load Amps | 1.5 a |
| Insulation Class | F |
| Inverter Code | Inverter Duty |
| KVA Code | N |
| Lifting Lugs | No Lifting Lugs |
| Locked Bearing Indicator | Locked Bearing |
| Max Speed | 2700 rpm |
| Motor Lead Termination | Flying Leads |
| Motor Standards | NEMA |
| Motor Type | 3520M |
| Mounting Arrangement | F1 |
| Number of Poles | 4 |
| Overall Length | 14.28 IN |
| Power Factor | 69 |
| Product Family | General Purpose |
| Pulley Face Code | C-Face |
| Rodent Screen | None |
| Service Factor | 1.00 |
| Shaft Diameter | 0.625 IN |
| Shaft Ground Indicator | No Shaft Grounding |
| Shaft Rotation | Reversible |
| Speed | 1770 rpm |
| Speed Code | Single Speed |
| Starting Method | Direct on line |
| Thermal Device - Bearing | None |
| Thermal Device - Winding | Normally Closed Thermostat |
| Vibration Sensor Indicator | No Vibration Sensor |
| Winding Thermal 1 | None |

Winding Thermal 2

None

Nameplate

NP0887XPSLEV

| | | | | | |
|----------------|--------------------|-------------------|--------------|-----------------|----|
| NO. | | CC | 010A | | |
| S/N | | TEMP CODE | T3C | | |
| SPEC. | 35-0000-1362 | INV.TYPE | PWM | | |
| CAT.NO. | CXM05142 | C HP FR | 60 | C HP TO | 90 |
| HP | 1//.75 | CT HZ FROM | 6 | CT HZ TO | 60 |
| VOLTS | 230/460//190/380 | VT HZ FROM | 6 | VT HZ TO | 60 |
| AMPS | 3.2/1.6//3.08/1.54 | MAG CUR | 2.2/1.1 | | |
| RPM | 1770//1475 | MX RPM | 2700 | | |
| HZ | 60//50 | PH | 3 | CL | F |
| | | NOM.EFF. | 85.5 | | |
| SER.F. | 1.00 | DES | B | SL HZ | 1 |
| | | WK2 | 0.144 | | |
| FRAME | 56C | RATING | 40C AMB-CONT | | |
| | | | | | |
| | | | | | |
| | | | | | |

AC Induction Motor Performance Data

Record # 86931

Typical performance - not guaranteed values

| Winding: 35WGG004-R010 | | Type: 3520M | Enclosure: XPFC | | | |
|------------------------|----------------------|--------------|--------------------------------------------------|---------------------|---------------------------|--------------------------|
| Nameplate Data | | | 460 V, 60 Hz: High Voltage Connection | | | |
| Rated Output (HP) | 1//.75 | | Full Load Torque | 2.97 LB-FT | | |
| Volts | 230/460//190/380 | | Start Configuration | direct on line | | |
| Full Load Amps | 3.26/1.63//3.08/1.54 | | Breakdown Torque | 13.68 LB-FT | | |
| R.P.M. | 1760//1475 | | Pull-up Torque | 7.85 LB-FT | | |
| Hz | 60//50 | Phase | 3 | Locked-rotor Torque | 9.01 LB-FT | |
| NEMA Design Code | B | | KVA Code | N | Starting Current | 14.13 A |
| Service Factor (S.F.) | 1 | | | | No-load Current | 1.08 A |
| NEMA Nom. Eff. | 85.5 | Power Factor | 67 | | Line-line Res. @ 25°C | 16.9 Ω |
| Rating - Duty | 40C | | AMB-CONT | | Temp. Rise @ Rated Load | 24°C |
| | | | | | Locked-rotor Power Factor | 61.5 |
| | | | | | Rotor inertia | 0.144 lb-ft ² |

Load Characteristics 460 V, 60 Hz, 1 HP

| % of Rated Load | 25 | 50 | 75 | 100 | 125 | 150 |
|-----------------|------|------|------|------|------|------|
| Power Factor | 30 | 47 | 60 | 69 | 76 | 79 |
| Efficiency | 72.1 | 81.7 | 84.7 | 85.7 | 85.5 | 84.7 |
| Speed | 1791 | 1784 | 1776 | 1768 | 1759 | 1750 |
| Line amperes | 1.11 | 1.22 | 1.38 | 1.59 | 1.82 | 2.09 |

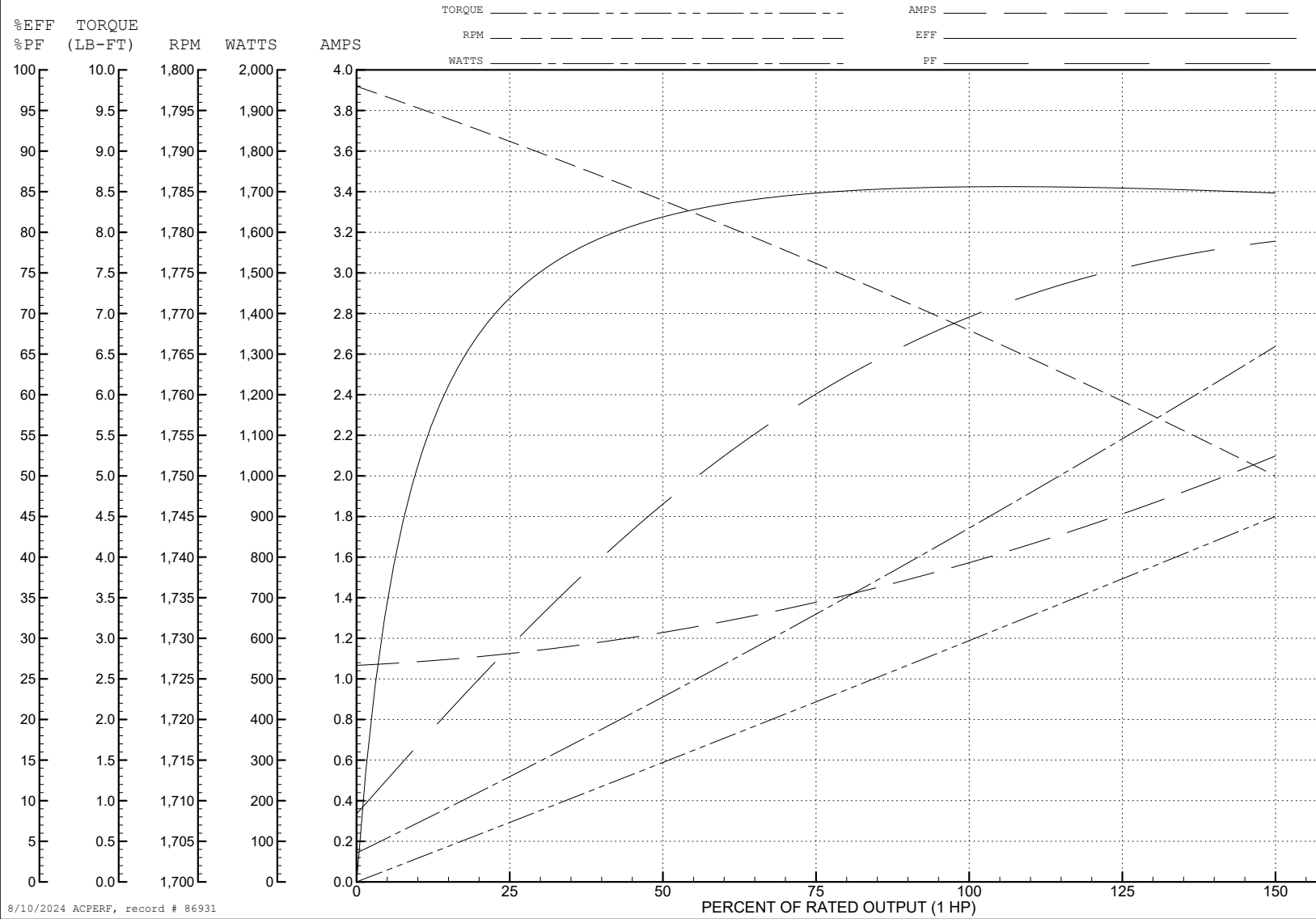
ABB Motors and Mechanical Inc.

WINDING # 35WGG004

Typical performance - not guaranteed values.

1 HP 3 PH 60 HZ 1768 RPM 460 V 3520M

TORQUES (LB-FT): PO=13.68 PU=7.85 LR=9.01 LRA=14.13



8/10/2024 ACPERF, record # 86931

AC Induction Motor Performance Data

Record # 86932

Typical performance - not guaranteed values

| Winding: 35WGG004-R010 | | Type: 3520M | Enclosure: XPFC | |
|------------------------|----------------------|-----------------|--------------------------------------------------|--------------------------|
| Nameplate Data | | | 380 V, 50 Hz: High Voltage Connection | |
| Rated Output (HP) | 1//.75 | | Full Load Torque | 2.68 LB-FT |
| Volts | 230/460//190/380 | | Start Configuration | direct on line |
| Full Load Amps | 3.26/1.63//3.08/1.54 | | Breakdown Torque | 12.31 LB-FT |
| R.P.M. | 1760//1475 | | Pull-up Torque | 7.45 LB-FT |
| Hz | 60//50 | Phase 3 | Locked-rotor Torque | 8.55 LB-FT |
| NEMA Design Code | B | KVA Code N | Starting Current | 13.12 A |
| Service Factor (S.F.) | 1 | | No-load Current | 1.06 A |
| NEMA Nom. Eff. | 85.5 | Power Factor 67 | Line-line Res. @ 25°C | 16.9 Ω |
| Rating - Duty | 40C AMB-CONT | | Temp. Rise @ Rated Load | 22°C |
| | | | Locked-rotor Power Factor | 67.1 |
| | | | Rotor inertia | 0.144 lb-ft ² |

Load Characteristics 380 V, 50 Hz, 0.75 HP

| % of Rated Load | 25 | 50 | 75 | 100 | 125 | 150 |
|-----------------|------|------|------|------|------|------|
| Power Factor | 29 | 46 | 58 | 67 | 74 | 79 |
| Efficiency | 68.3 | 79 | 82.7 | 84 | 83.7 | 83.2 |
| Speed | 1492 | 1486 | 1479 | 1471 | 1463 | 1455 |
| Line amperes | 1.08 | 1.18 | 1.32 | 1.5 | 1.71 | 1.95 |

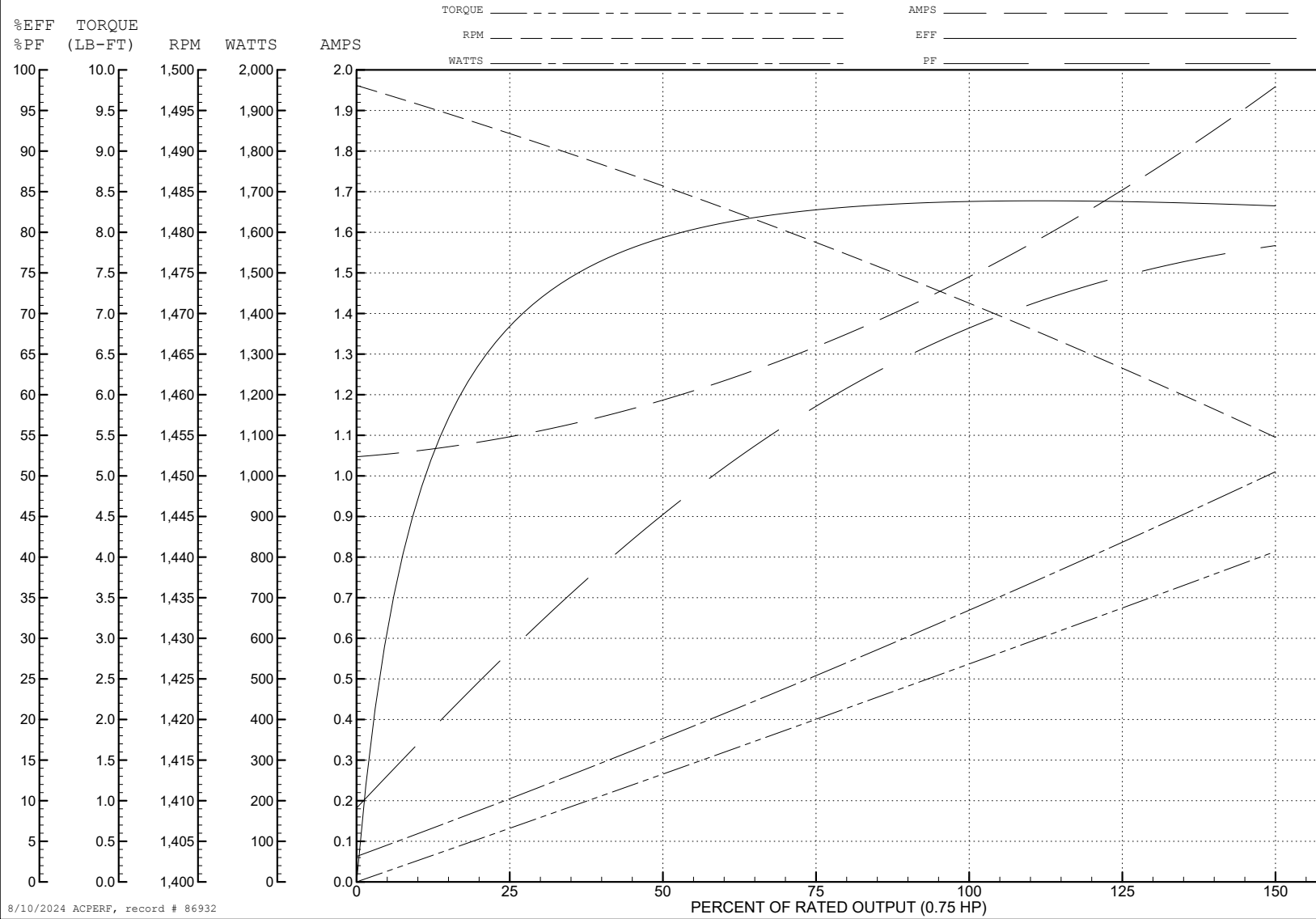
ABB Motors and Mechanical Inc.

WINDING # 35WGG004

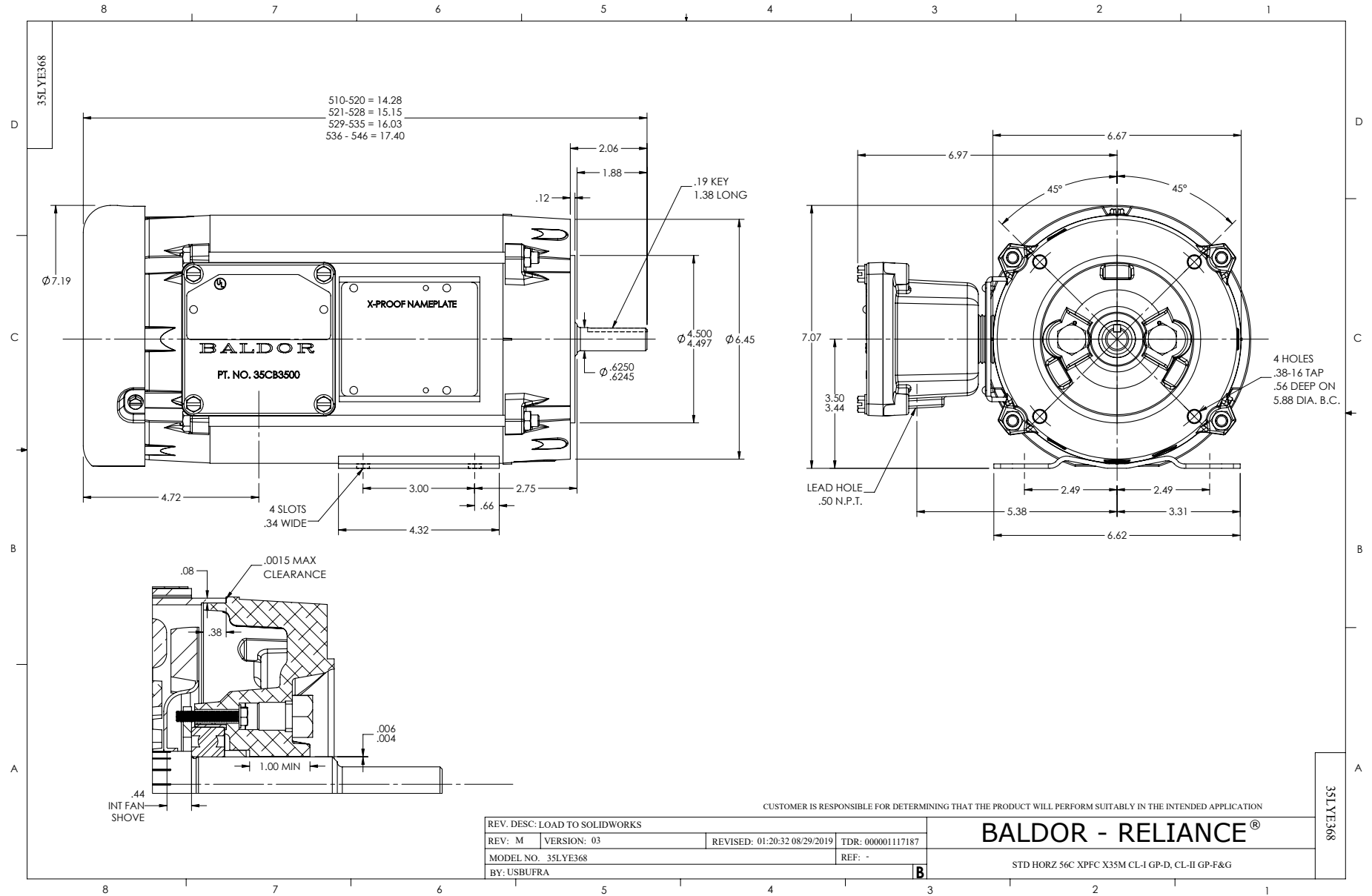
Typical performance - not guaranteed values.

0.75 HP 3 PH 50 HZ 1471 RPM 380 V 3520M

TORQUES (LB-FT): PO=12.31 PU=7.45 LR=8.55 LRA=13.12



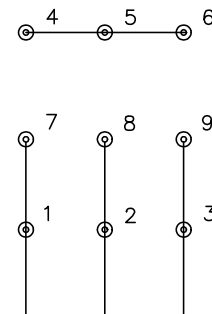
8/10/2024 ACPERF, record # 86932



CD0005



LOW VOLTAGE (2Y)



LINE

HIGH VOLTAGE (1Y)



LINE

NOTES:

1. INTERCHANGE ANY TWO LINE LEADS TO REVERSE ROTATION.
2. OPTIONAL THERMOSTATS ARE PROVIDED WHEN SPECIFIED.
3. ACTUAL NUMBER OF INTERNAL PARALLEL CIRCUITS MAY BE A MULTIPLE OF THOSE SHOWN ABOVE.
4. LEAD COLORS ARE OPTIONAL. LEADS MUST ALWAYS BE NUMBERED AS SHOWN.

CD0005

| | | | |
|-------------------------------------------|---------|-------------------------|--------------|
| REV. DESC: REVISE TO SHOW OPTIONAL COLORS | | | |
| REV. LTR: E | BY: JLP | REVISED: 01/19/99 10:15 | TDR: 0171435 |
| S00000 | | FILE: AAA00005140 | MDL: - |
| | | MTL: - | |

BALDOR ELECTRIC Co.

3PH, DV, 9 LEADS