

BALDOR® • RELIANCE™

Customer information packet

CXM050742A

0.75HP, 1725RPM, 3PH, 60HZ, 56C, XPFC, F1

Class - CLI GP D; CLII GP F,G

Division - Division I

Specifications

| | |
|--------------------------------|---|
| Enclosure | XPFC |
| Frame | 56C |
| Frame Material | Steel |
| Frequency | 60.00 Hz |
| Haz Area Class and Group | CLI GP D; CLII GP F,G |
| Haz Area Division | Division I |
| Motor Letter Type | Three Phase |
| Output @ Frequency | .750 HP @ 60 HZ |
| Phase | 3 |
| Synchronous Speed @ Frequency | 1800 RPM @ 60 HZ |
| Voltage @ Frequency | 460.0 V @ 60 HZ 208.0 V @ 60 HZ 230.0 V @ 60 HZ |
| Agency Approvals | CSA UL |
| Ambient Temperature | 40 °C |
| Auxillary Box | No Auxillary Box |
| Auxillary Box Lead Termination | None |
| Base Indicator | Rigid |
| Bearing Grease Type | Polyrex EM (-20F +300F) |
| Blower | None |
| Current @ Voltage | 1.500 A @ 460.0 V 3.000 A @ 230.0 V 3.200 A @ 208.0 V |
| Design Code | B |
| Drip Cover | No Drip Cover |
| Duty Rating | CONT |
| Efficiency @ 100% Load | 73.0 % |
| Electrically Isolated Bearing | Not Electrically Isolated |
| Feedback Device | NO FEEDBACK |
| Haz Area Temp Code | T3C |
| Heater Indicator | No Heater |

Part detail

| | |
|--------------|------------|
| Revision | D |
| Type | AC |
| Mech. spec. | |
| Base | |
| Status | PRD/A |
| Elec. spec. | 34WG5721 |
| Layout | 34LY5329 |
| Eff. date | 05-01-2024 |
| CD Diagram | CD0007 |
| Poles | 04 |
| Leads | 12#18 |
| Proprietary | False |
| Created date | 08-04-2020 |

| | |
|-----------------------------|----------------------------|
| High Voltage Full Load Amps | 1.5 a |
| Insulation Class | B |
| Inverter Code | Not Inverter |
| IP Rating | NONE |
| KVA Code | K |
| Lifting Lugs | No Lifting Lugs |
| Locked Bearing Indicator | No Locked Bearing |
| Motor Lead Termination | Flying Leads |
| Motor Standards | NEMA |
| Motor Type | 3420M |
| Mounting Arrangement | F1 |
| Number of Poles | 4 |
| Overall Length | 14.22 IN |
| Power Factor | 58 |
| Product Family | Hazardous Location Motor |
| Pulley Face Code | C-Face |
| Rodent Screen | None |
| Service Factor | 1.00 |
| Shaft Diameter | 0.625 IN |
| Shaft Ground Indicator | No Shaft Grounding |
| Shaft Rotation | Reversible |
| Speed | 1725 rpm |
| Speed Code | Single Speed |
| Starting Method | Direct on line |
| Thermal Device - Bearing | None |
| Thermal Device - Winding | None |
| Vibration Sensor Indicator | No Vibration Sensor |
| Winding Thermal 1 | Automatic Thermal Overload |
| Winding Thermal 1 Location | EP |
| Winding Thermal 2 | None |

Nameplate

| NP0016XPSL | | | | | |
|----------------|------------------------|----------------------|-----|--------------|---|
| NO. | | CC | | | |
| SER. # | | | | | |
| SPEC | 34-0000-0387 | | | | |
| CAT.NO. | CXM050742A | | | | |
| H.P. | .75 | T. CODE | T3C | | |
| VOLTS | 208-230/460 | | | | |
| AMPS | 3.2-3/1.5 | | | | |
| R.P.M. | 1725 34WG5721 | | | | |
| HZ | 60 | PH | 3 | CLASS | B |
| SER.F. | 1.00 | DES | B | CODE | K |
| RATING | 40C AMB-CONT | | | | |
| FRAME | 56C | NEMA NOM. EFF | 73 | | |
| | PF | 58 | | | |
| BLANK | NEMA MG-1 PART 5, IP54 | | | | |

AC Induction Motor Performance Data

Record # 6818

Typical performance - not guaranteed values

| Winding: 34WG5721-R001 | | Type: 3420M | Enclosure: XPFC | | |
|------------------------|-------------|---------------------|--|-------------------------|--------|
| Nameplate Data | | | 460 V, 60 Hz: High Voltage Connection | | |
| Rated Output (HP) | .75 | Full Load Torque | 2.25 LB-FT | | |
| Volts | 208-230/460 | Start Configuration | direct on line | | |
| Full Load Amps | 3.2-3/1.5 | Breakdown Torque | 10 LB-FT | | |
| R.P.M. | 1725 | Pull-up Torque | 8.5 LB-FT | | |
| Hz | 60 Phase | 3 | Locked-rotor Torque | 8.8 LB-FT | |
| NEMA Design Code | B | KVA Code | K | Starting Current | 10 A |
| Service Factor (S.F.) | | 1 | No-load Current | 1.2 A | |
| NEMA Nom. Eff. | 73 | Power Factor | 58 | Line-line Res. @ 25°C | 17.7 Ω |
| Rating - Duty | | 40C | AMB-CONT | Temp. Rise @ Rated Load | 74°C |

Load Characteristics 460 V, 60 Hz, 0.75 HP

| % of Rated Load | 25 | 50 | 75 | 100 | 125 | 150 |
|-----------------|------|------|------|------|------|------|
| Power Factor | 28 | 42 | 55 | 64 | 71 | 76 |
| Efficiency | 56.1 | 69.7 | 74.7 | 76.2 | 76.1 | 75.2 |
| Speed | 1783 | 1766 | 1749 | 1731 | 1711 | 1693 |
| Line amperes | 1.2 | 1.2 | 1.3 | 1.5 | 1.6 | 1.8 |

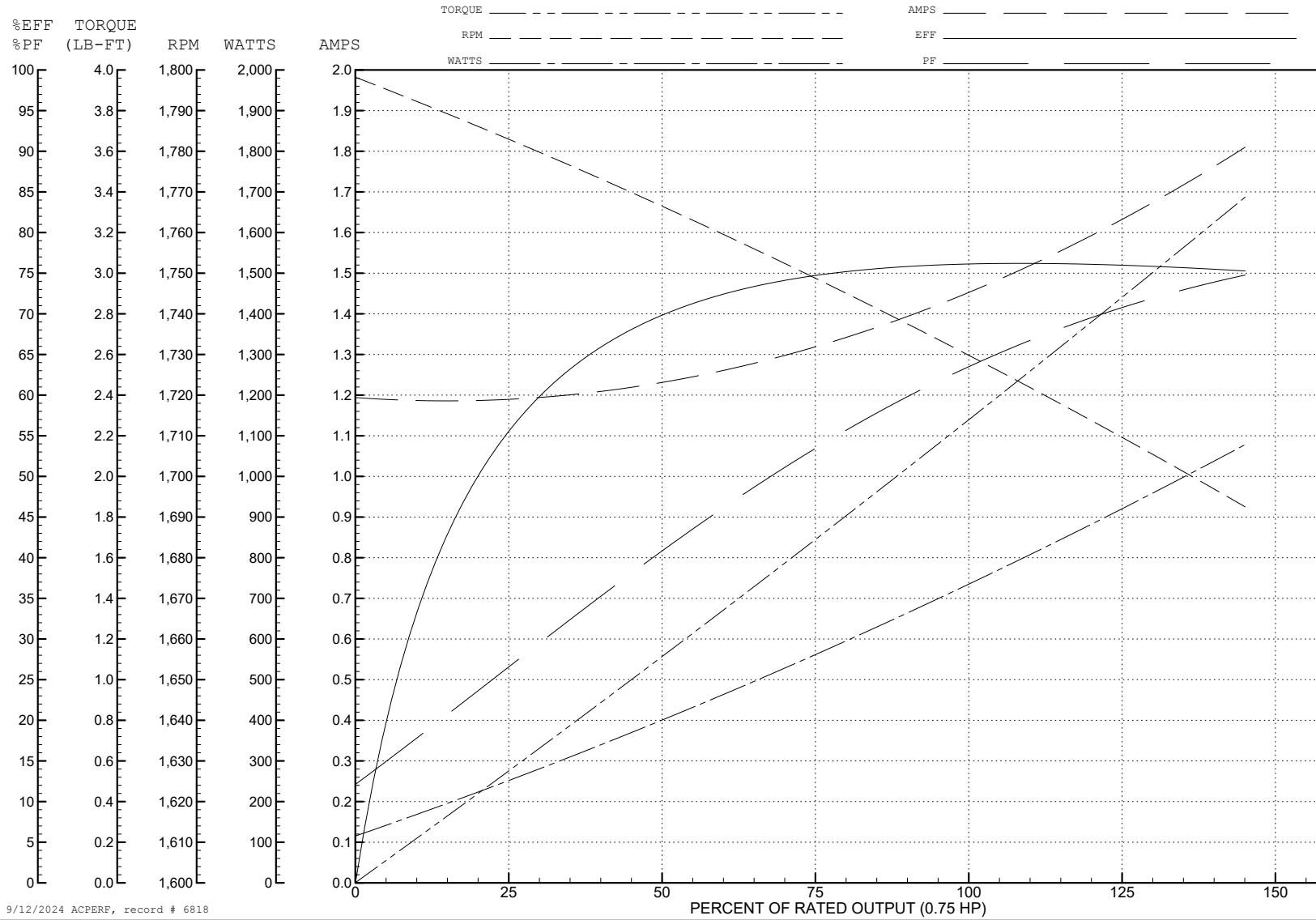
ABB Motors and Mechanical Inc.

WINDING # 34WG5721

0.75 HP 3 PH 60 HZ 1725 RPM 460 V 3420M

Typical performance - not guaranteed values.

TORQUES (LB-FT): PO=10 PU=8.5 LR=8.8 LRA=10



9/12/2024 ACPERF, record # 6818

AC Induction Motor Performance Data

Record # 52509

Typical performance - not guaranteed values

| Winding: 34WG5721-R001 | | Type: 3420M | Enclosure: XPFC | | |
|------------------------|--------------|---------------------|---|---------------------------|---------|
| Nameplate Data | | | 208 V, 60 Hz: Low Voltage Connection | | |
| Rated Output (HP) | .75 | Full Load Torque | 2.26 LB-FT | | |
| Volts | 208-230/460 | Start Configuration | direct on line | | |
| Full Load Amps | 3.2-3/1.5 | Breakdown Torque | 8.04 LB-FT | | |
| R.P.M. | 1725 | Pull-up Torque | 6.66 LB-FT | | |
| Hz | 60 Phase | 3 | Locked-rotor Torque | 6.89 LB-FT | |
| NEMA Design Code | B | KVA Code | K | Starting Current | 17.58 A |
| Service Factor (S.F.) | 1 | No-load Current | 1.856 A | | |
| NEMA Nom. Eff. | 73 | Power Factor | 58 | Line-line Res. @ 25°C | 4.425 Ω |
| Rating - Duty | 40C AMB-CONT | | Temp. Rise @ Rated Load | 63°C | |
| | | | Locked-rotor Power Factor | 57.4 | |
| | | | Rotor inertia | 0.0476 LB-FT ² | |

Load Characteristics 208 V, 60 Hz, 0.75 HP

| % of Rated Load | 25 | 50 | 75 | 100 | 125 | 150 |
|-----------------|-------|-------|------|------|------|------|
| Power Factor | 33 | 53 | 67 | 73 | 82 | 85 |
| Efficiency | 64 | 75.4 | 78.7 | 78.5 | 77.6 | 75.9 |
| Speed | 1780 | 1761 | 1740 | 1719 | 1695 | 1672 |
| Line amperes | 1.888 | 1.958 | 2.22 | 2.68 | 3 | 3.5 |

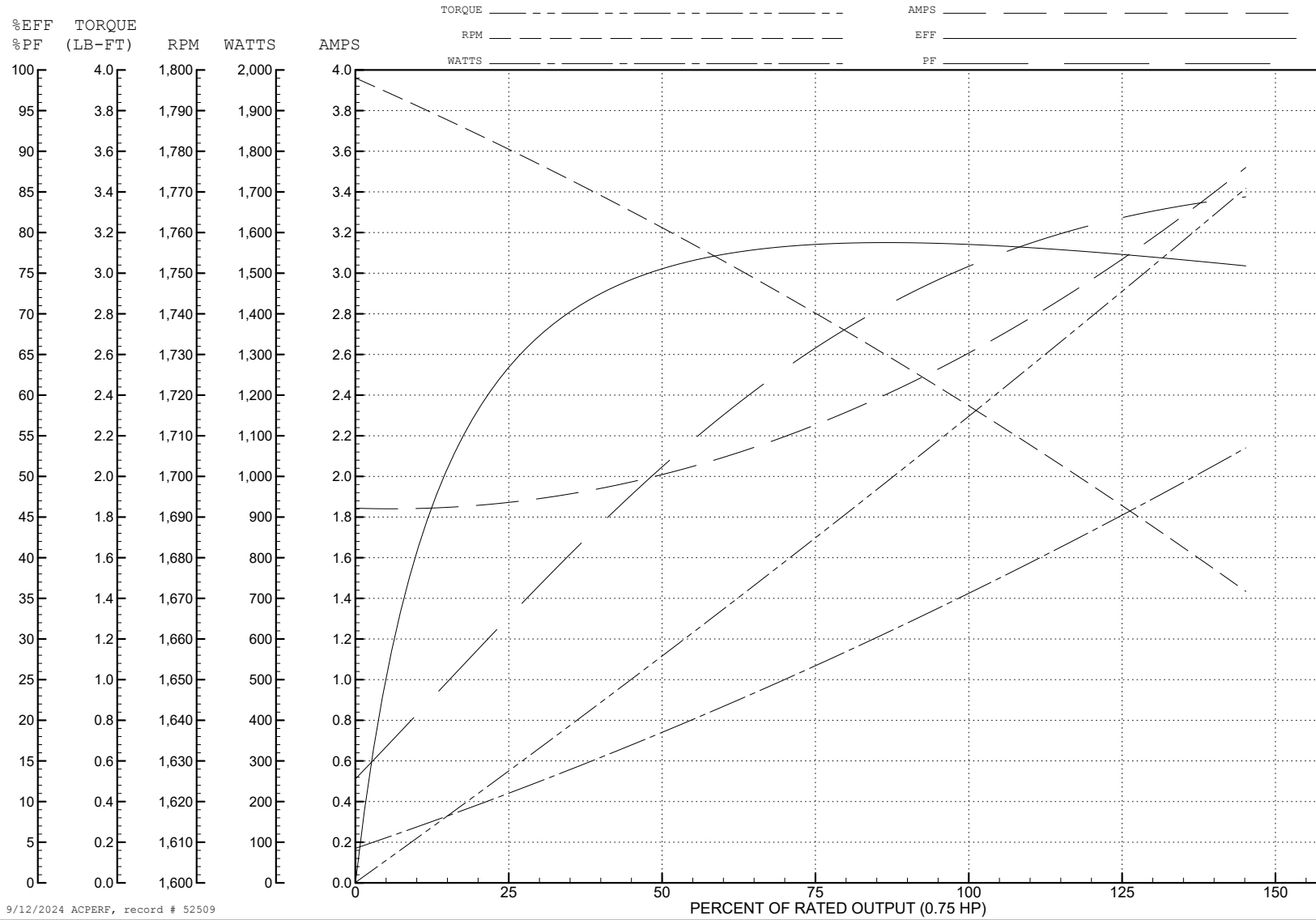
ABB Motors and Mechanical Inc.

WINDING # 34WG5721

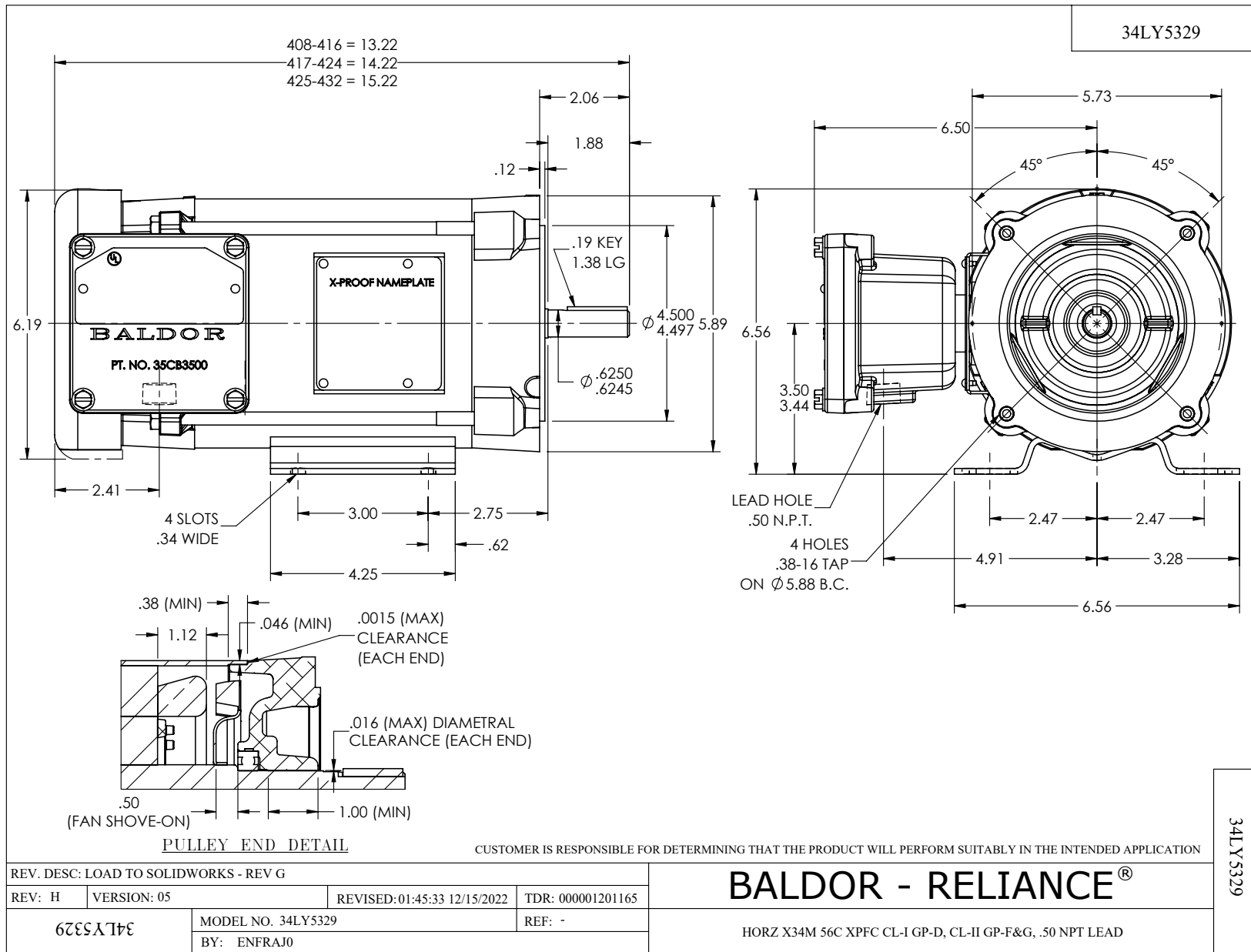
0.75 HP 3 PH 60 HZ 1725 RPM 208 V 3420M

Typical performance - not guaranteed values.

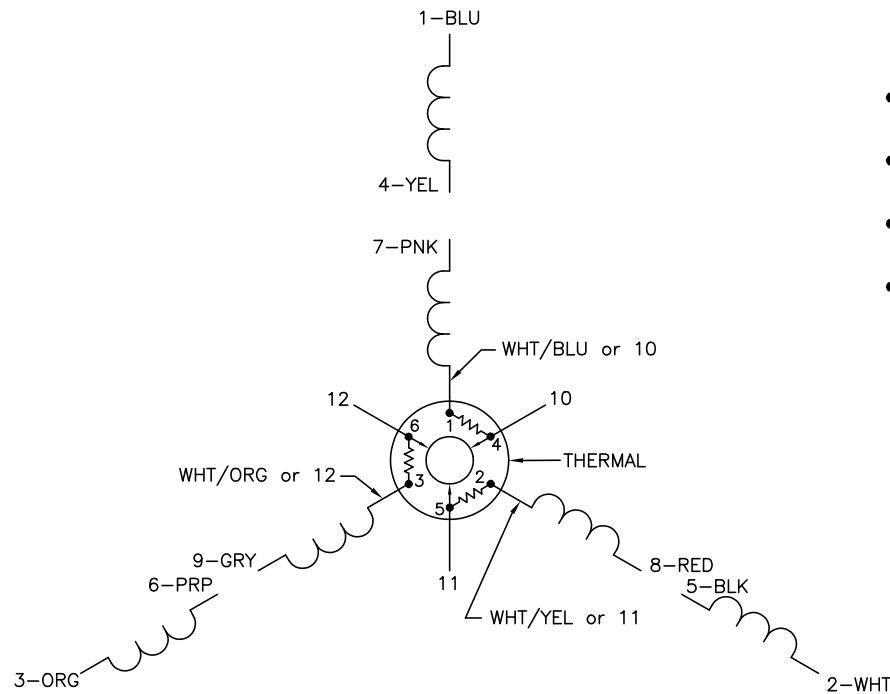
TORQUES (LB-FT): PO=8.04 PU=6.66 LR=6.89 LRA=17.58



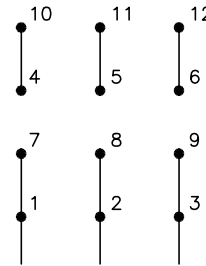
9/12/2024 ACPERF, record # 52509



CD0007

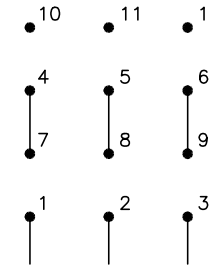


LOW VOLTAGE
(2Y)



LINE

HIGH VOLTAGE
(1Y)



LINE

NOTES:

1. INTERCHANGE ANY TWO LINE LEADS TO REVERSE ROTATION.
2. ACTUAL NUMBER OF INTERNAL PARALLEL CIRCUITS MAY VARY.
3. LEAD COLORS ARE OPTIONAL. LEADS MUST ALWAYS BE NUMBERED AS SHOWN.

CD0007

| | | | |
|----------------------------------|---------|------------------------|--------------|
| REV. DESC: ADDED "CK" PLANT CODE | | | |
| REV. LTR: E | BY: EAH | REVISED: 05/06/99 17:1 | TDR: 0181040 |
| L00000 | | FILE: AAA00008370 | MDL: - |
| | | MTL: - | |

BALDOR ELECTRIC Co.

3PH, DV, THERMAL, 12 LEADS