



Customer information packet

CXL21542

5HP, 1740RPM, 1PH, 60HZ, 215C, 3726LC, XPFC, F1

Class - CLI GP D; CLII GP F,G

Division - Division I

Specifications

Enclosure	XPFC
Frame	215C
Frame Material	Steel
Frequency	60.00 Hz
Motor Letter Type	Cap Start, Cap Run
Output @ Frequency	5.000 HP @ 60 HZ
Phase	1
Synchronous Speed @ Frequency	1800 RPM @ 60 HZ
Voltage @ Frequency	230.0 V @ 60 HZ
XP Class and Group	CLI GP D; CLII GP F,G
XP Division	Division I
Agency Approvals	CSA UL
Ambient Temperature	40 °C
Auxillary Box	No Auxillary Box
Auxillary Box Lead Termination	None
Base Indicator	Rigid
Bearing Grease Type	Polyrex EM (-20F +300F)
Blower	None
Current @ Voltage	19.700 A @ 230.0 V
Design Code	L
Drip Cover	No Drip Cover
Duty Rating	CONT
Efficiency @ 100% Load	84.0 %
Electrically Isolated Bearing	Not Electrically Isolated
Feedback Device	NO FEEDBACK
Heater Indicator	No Heater
High Voltage Full Load Amps	19.7 a
Insulation Class	F
Inverter Code	Not Inverter
IP Rating	NONE
KVA Code	G

Part detail

Revision	E
Type	AC
Mech. spec.	
Base	
Status	PRD/A
Elec. spec.	37WGA0036
Layout	37LY-000-351
Eff. date	02-28-2024
CD Diagram	CD0017A02
Poles	04
Leads	2#14 A PH,2#16 B PH
Proprietary	False
Created date	04-23-2021

Lifting Lugs	Standard Lifting Lugs
Locked Bearing Indicator	Locked Bearing
Motor Lead Termination	Flying Leads
Motor Standards	NEMA
Motor Type	3726LC
Mounting Arrangement	F1
Number of Poles	4
Overall Length	19.56 IN
Power Factor	96
Product Family	General Purpose
Pulley Face Code	Standard
Rodent Screen	None
Service Factor	1.15
Shaft Diameter	1.125 IN
Shaft Ground Indicator	No Shaft Grounding
Shaft Rotation	Reversible
Speed	1740 rpm
Speed Code	Single Speed
Starting Method	Direct on line
Thermal Device - Bearing	None
Thermal Device - Winding	Normally Closed Thermostat
Vibration Sensor Indicator	No Vibration Sensor
Winding Thermal 1	None
Winding Thermal 2	None
XP Temp Code	T2C

Nameplate

NP1426XPSL					
NO.		CC			
SER.					
SPEC.	37-0000-0350				
CAT.NO.	CXL21542				
HP	5	T. CODE	T3C		
VOLTS	230				
AMPS	19.7				
RPM	1740				
HZ	60	PH	1	CL	F
SER.F.	1.15	DES	L	CODE	G
RATING	40C AMB-CONT				
FRAME	215C	NEMA-NOM-EFF	84		
	PF	96			
BLANK	NEMA MG-1 PART 5, IP54				

AC Induction Motor Performance Data

Record # 87412

Typical performance - not guaranteed values

Winding: 37WGT877-R001		Type: 3726LC		Enclosure: TEFC	
Nameplate Data			230 V, 60 Hz: Single Voltage Motor		
Rated Output (HP)	5	Full Load Torque	15.14 LB-FT		
Volts	230	Start Configuration	Unknown		
Full Load Amps	20.5	Breakdown Torque	35.4 LB-FT		
R.P.M.	1750	Pull-up Torque	34.2 LB-FT		
Hz	60	Phase	1	Locked-rotor Torque	38.3 LB-FT
NEMA Design Code	L	KVA Code	H	Starting Current	133 A
Service Factor (S.F.)			1.15	No-load Current	6.54 A
NEMA Nom. Eff.	84	Power Factor	93	Line-line Res. @ 25°C	0.41482 Ω A Ph 1.1316 Ω B Ph
Rating - Duty	40C AMB-CONT			Temp. Rise @ Rated Load	64°C
S.F. Amps				Temp. Rise @ S.F. Load	77°C

Load Characteristics 230 V, 60 Hz, 5 HP

% of Rated Load	25	50	75	100	125	150	S.F.
Power Factor	73	87	92	93	94	93	94
Efficiency	66.3	80.1	84.7	85.3	84.1	81.1	84.6
Speed	1789.1	1777.2	1764.6	1751.5	1734.9	1713.8	1742
Line amperes	8.1	11.6	15.8	20.6	25.7	32.3	23.7

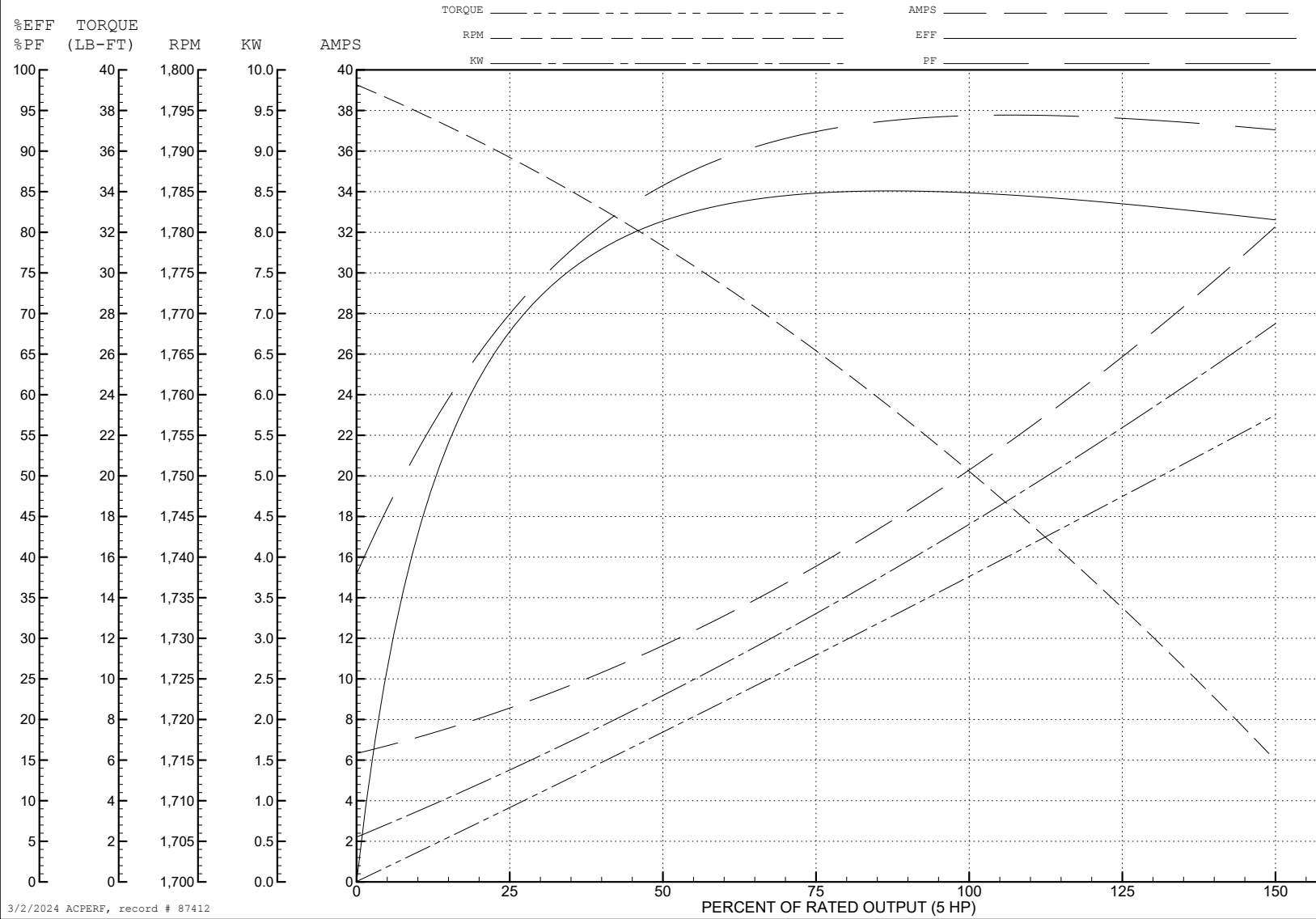
ABB Motors and Mechanical Inc.

WINDING # 37WGT877

Typical performance - not guaranteed values.

5 HP 1 PH 60 HZ 1750 RPM 230 V 3726LC

TORQUES (LB-FT): PO=35.4 PU=34.2 LR=38.3 LRA=133



3/2/2024 ACPERF, record # 87412

AC Induction Motor Performance Data

Record # 88068

Typical performance - not guaranteed values

Winding: 37WGA0036-R001		Type: 3726LC	Enclosure: TEFC	
Nameplate Data			230 V, 60 Hz: Single Voltage Motor	
Rated Output (HP)	5	Full Load Torque	14.93 LB-FT	
Volts	230	Start Configuration	direct on line	
Full Load Amps	19.7	Breakdown Torque	29.1 LB-FT	
R.P.M.	1740	Pull-up Torque	29.7 LB-FT	
Hz	60 Phase	1	Locked-rotor Torque	26.7 LB-FT
NEMA Design Code	L KVA Code	G	Starting Current	97.4 A
Service Factor (S.F.)		1.15	No-load Current	2.56 A
NEMA Nom. Eff.	84 Power Factor	96	Line-line Res. @ 25°C	0.463 Ω A Ph 1.7 Ω B Ph
Rating - Duty	40C AMB-CONT		Temp. Rise @ Rated Load	58°C
S.F. Amps			Temp. Rise @ S.F. Load	70°C
			Locked-rotor Power Factor	91
			Rotor inertia	0.639 lb-ft ²

Load Characteristics 230 V, 60 Hz, 5 HP

% of Rated Load	25	50	75	100	125	150	S.F.
Power Factor	99	99	99	99	99	98	98
Efficiency	73.3	84.7	88	84.7	88.3	86.1	88.5
Speed	1790	1781	1769	1740	1743	1725	1756
Line amperes	5.02	9.07	13.3	19.7	22.99	28.83	21.4

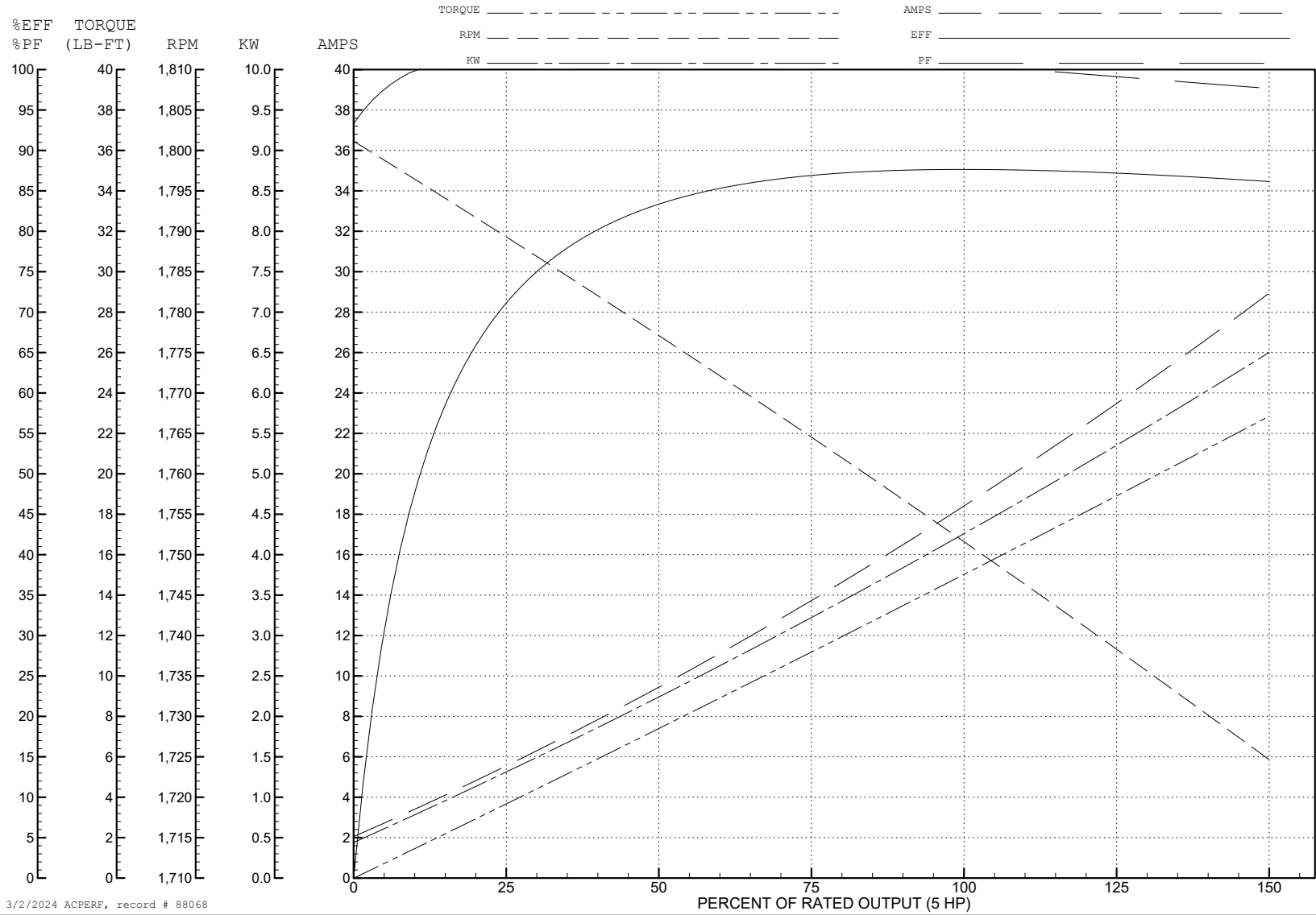
ABB Motors and Mechanical Inc.

WINDING # 37WGA0036

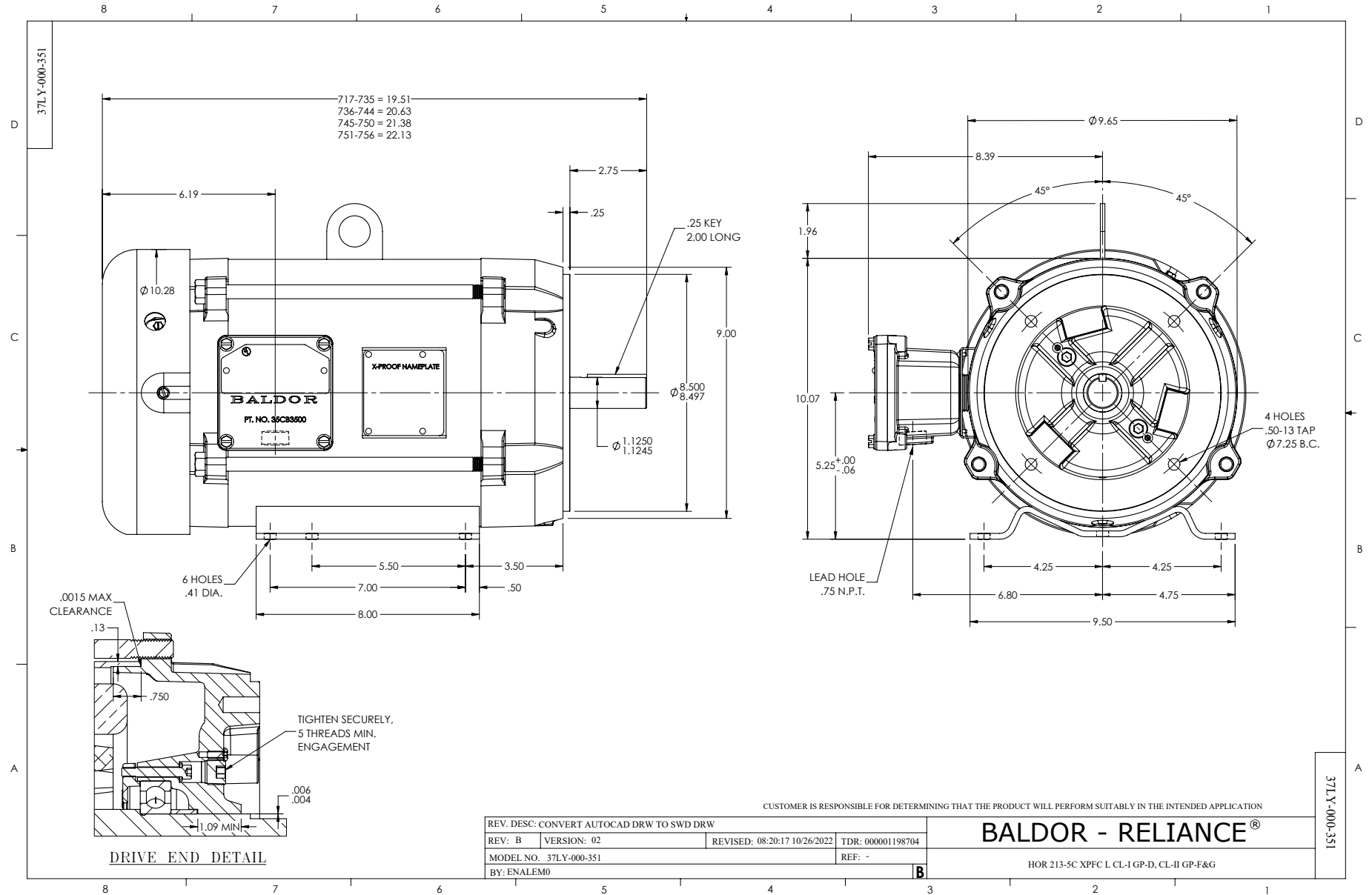
Typical performance - not guaranteed values.

5 HP 1 PH 60 HZ 1740 RPM 230 V 3726LC

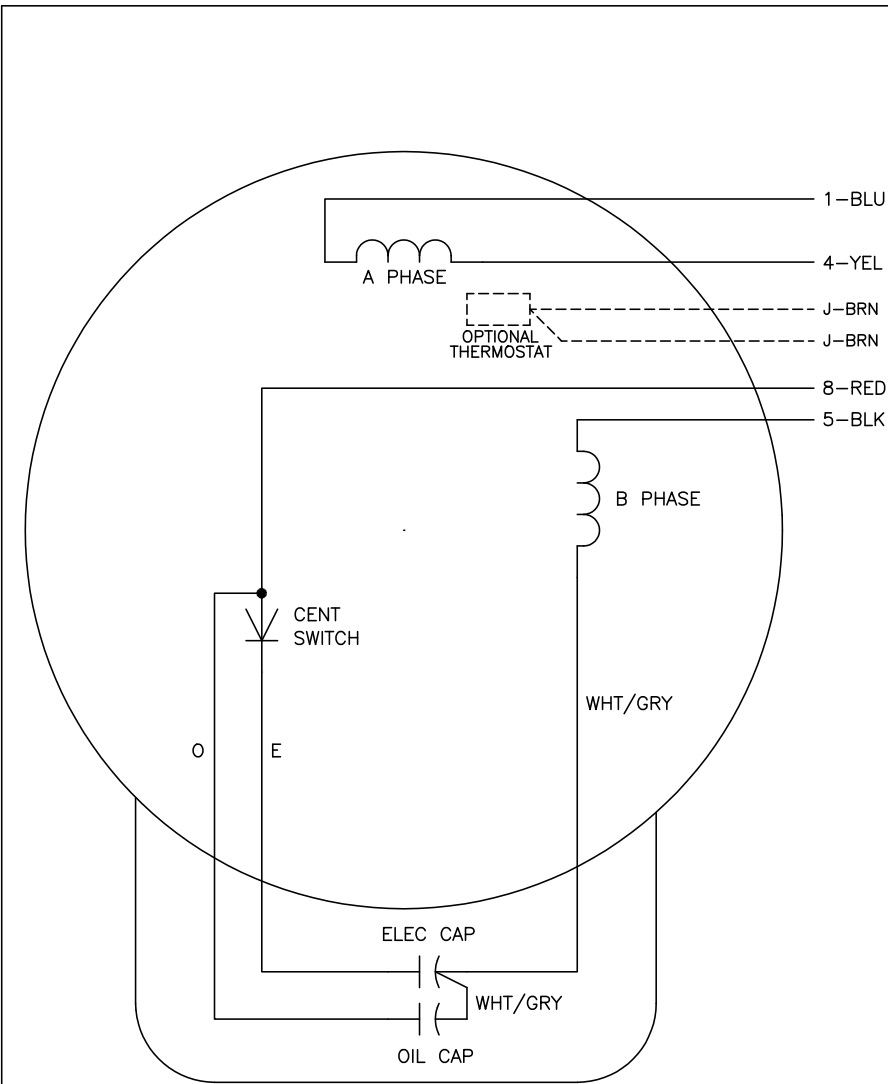
TORQUES (LB-FT): PO=29.1 PU=29.7 LR=26.7 LRA=97.4



3/2/2024 ACPERF, record # 88068



CD0017A02



	LINE A	LINE B
STD	1,8	4,5
OPP	1,5	4,8

NOTES:

1. STANDARD ROTATION IS CCW FACING END OPPOSITE SHAFT EXTENSION.
2. OPTIONAL THERMOSTAT IS PROVIDED WHEN SPECIFIED.
3. MULTIPLE CAPACITORS ARE CONNECTED IN PARALLEL UNLESS OTHERWISE SPECIFIED.
4. LEAD COLORS ARE OPTIONAL. LEADS MUST ALWAYS BE NUMBERED AS SHOWN.

CD0017A02

REV. DESC: REVISE TO SHOW OPTIONAL COLORS			
REV. LTR: B	BY: JLP	REVISED: 04/09/99 11:30	TDR: 0178636
CD0017A02		FILE: AAA00007514	MDL: -
		MTL: -	

BALDOR ELECTRIC Co.

TYPE LC, SV, REV, 4 LEADS