



Customer information packet

CWDM3539

.5HP, 1175RPM, 3PH, 60HZ, 56C, 3522M, TENV, F1

Class - None

Division - Not Applicable

Specifications

Enclosure	TENV
Frame	56C
Frame Material	Steel
Frequency	60.00 Hz
Haz Area Class and Group	None
Haz Area Division	Not Applicable
Motor Letter Type	Three Phase
Output @ Frequency	.500 HP @ 60 HZ
Phase	3
Synchronous Speed @ Frequency	1200 RPM @ 60 HZ
Voltage @ Frequency	460.0 V @ 60 HZ 230.0 V @ 60 HZ 208.0 V @ 60 HZ
Agency Approvals	C UR US
Ambient Temperature	40 °C
Auxillary Box	No Auxillary Box
Auxillary Box Lead Termination	None
Base Indicator	Rigid
Bearing Grease Type	Polyrex EM (-20F +300F)
Blower	None
Current @ Voltage	2.000 A @ 230.0 V 2.000 A @ 208.0 V 1.000 A @ 460.0 V
Design Code	B
Drip Cover	No Drip Cover
Duty Rating	CONT
Efficiency @ 100% Load	77.0 %
Electrically Isolated Bearing	Not Electrically Isolated
Feedback Device	NO FEEDBACK
Front Shaft Indicator	None
Heater Indicator	No Heater
High Voltage Full Load Amps	1.0 a

Part detail

Revision	D
Type	AC
Mech. spec.	35S588
Base	
Status	PRD/A
Elec. spec.	35WGG337
Layout	35LYS588
Eff. date	04-26-2024
CD Diagram	CD0005
Poles	06
Leads	9#18
Proprietary	False
Created date	09-09-2022

Insulation Class	F
Inverter Code	Inverter Ready
KVA Code	M
Lifting Lugs	No Lifting Lugs
Locked Bearing Indicator	Locked Bearing
Motor Lead Quantity/Wire Size	9 @ 18 AWG
Motor Lead Termination	Flying Leads
Motor Standards	NEMA
Motor Type	3522M
Mounting Arrangement	F1
Number of Poles	6
Overall Length	12.06 IN
Power Factor	57
Product Family	Wash Down
Pulley End Bearing Type	Sealed Bearing
Pulley Face Code	C-Face
Pulley Shaft Indicator	Standard
Rodent Screen	None
Service Factor	1.25
Shaft Diameter	0.625 IN
Shaft Ground Indicator	No Shaft Grounding
Shaft Rotation	Reversible
Shaft Slinger Indicator	Shaft Slinger
Speed	1175 rpm
Speed Code	Single Speed
Starting Method	Direct on line
Thermal Device - Bearing	None
Thermal Device - Winding	None
Vibration Sensor Indicator	No Vibration Sensor
Winding Thermal 1	None
Winding Thermal 2	None

Nameplate

NP1496L									
CAT.NO.	CWDM3539								
SPEC.	35S588G337G1								
HP	.5								
VOLTS	208-230/460								
AMP	2/1								
RPM	1175								
FRAME	56C		HZ	60		PH	3		
SER.F.	1.25	CODE	M	DES	B	CLASS	F		
NEMA-NOM-EFF	77	PF	57						
RATING	40C AMB-CONT								
CC									
DE	6205		ODE	6203					
ENCL	TENV	SN							
	SFA 2.3-2.2/1.1								

AC Induction Motor Performance Data

Record # 87746

Preliminary Data Sheet

Winding: 35WGG337-R002		Type: 3522M		Enclosure: TENV	
Nameplate Data			460 V, 60 Hz: High Voltage Connection		
Rated Output (HP)	.5	Full Load Torque	2.23 LB-FT		
Volts	208-230/460	Start Configuration	direct on line		
Full Load Amps	2/1	Breakdown Torque	8.81 LB-FT		
R.P.M.	1175	Pull-up Torque	4.83 LB-FT		
Hz	60	Phase	3	Locked-rotor Torque	5.16 LB-FT
NEMA Design Code	B	KVA Code	M	Starting Current	6.64 A
Service Factor (S.F.)	1.25	No-load Current	0.789 A		
NEMA Nom. Eff.	77	Power Factor	57	Line-line Res. @ 25°C	30 Ω
Rating - Duty	40C	AMB-CONT	Temp. Rise @ Rated Load		
S.F. Amps	2.3/1.15	Temp. Rise @ S.F. Load			85°C
			Locked-rotor Power Factor	50.7	
			Rotor inertia	0.16 lb-ft ²	

Load Characteristics 460 V, 60 Hz, 0.5 HP

% of Rated Load	25	50	75	100	125	150	S.F.
Power Factor	23	36	48	56	63	68	63
Efficiency	63.7	75.6	79.4	81.4	81.5	80.6	81.5
Speed	1194	1190	1185	1180	1174	1167	1174
Line amperes	0.802	0.855	0.929	1.02	1.14	1.29	1.14

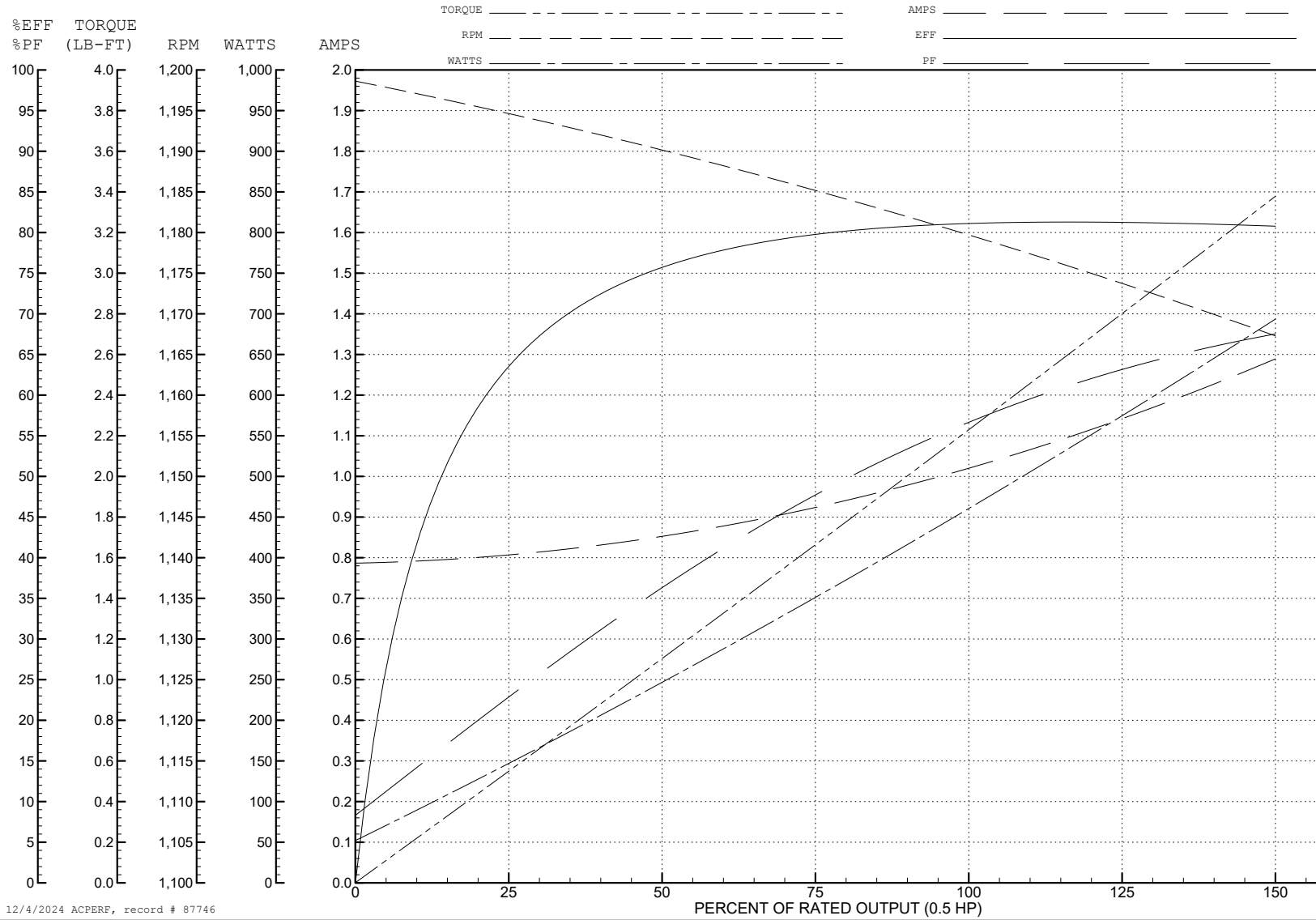
ABB Motors and Mechanical Inc.

WINDING # 35WGG337

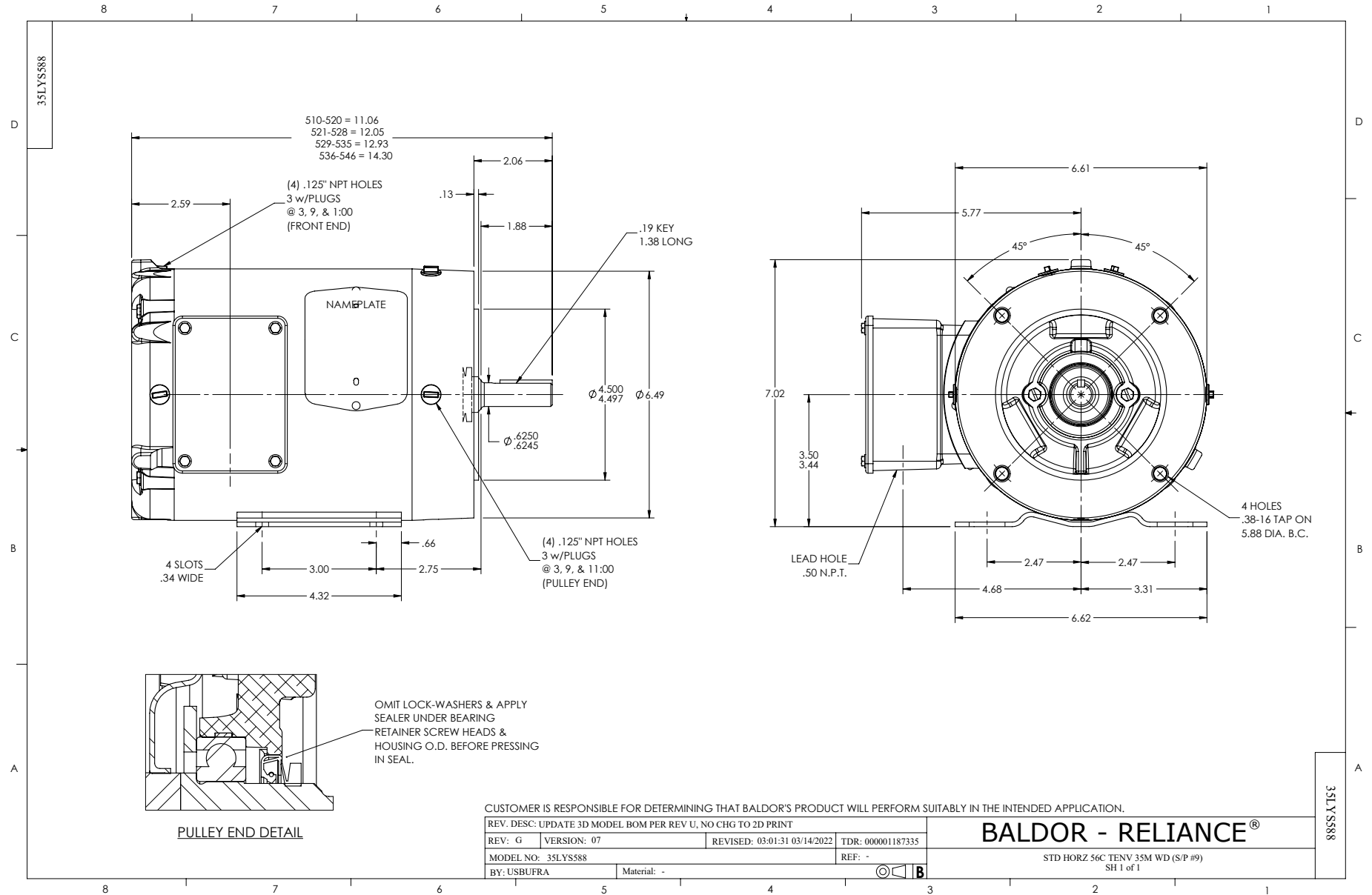
0.5 HP 3 PH 60 HZ 1175 RPM 460 V 3522M

Typical performance - not guaranteed values.

TORQUES (LB-FT): PO=8.81 PU=4.83 LR=5.16 LRA=6.64



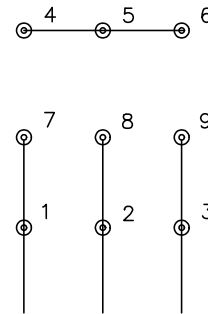
12/4/2024 ACPERF, record # 87746



CD0005

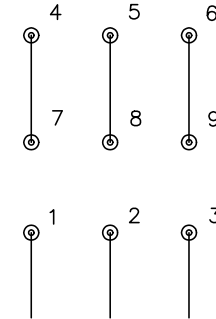


LOW VOLTAGE
(2Y)



LINE

HIGH VOLTAGE
(1Y)



LINE

NOTES:

1. INTERCHANGE ANY TWO LINE LEADS TO REVERSE ROTATION.
2. OPTIONAL THERMOSTATS ARE PROVIDED WHEN SPECIFIED.
3. ACTUAL NUMBER OF INTERNAL PARALLEL CIRCUITS MAY BE A MULTIPLE OF THOSE SHOWN ABOVE.
4. LEAD COLORS ARE OPTIONAL. LEADS MUST ALWAYS BE NUMBERED AS SHOWN.

CD0005

REV. DESC: REVISE TO SHOW OPTIONAL COLORS			
REV. LTR: E	BY: JLP	REVISED: 01/19/99 10:15	TDR: 0171435
S00000		FILE: AAA00005140	MDL: -
		MTL: -	

BALDOR ELECTRIC Co.

3PH, DV, 9 LEADS