



---

# Customer information packet

## CWDL3507

.75HP, 1750RPM, 1PH, 60HZ, 56C, 3522L, TEFC, F1

Class - None

Division - Not Applicable

## Specifications

Enclosure	TEFC
Frame	56C
Frame Material	Steel
Frequency	60.00 Hz
Haz Area Class and Group	None
Haz Area Division	Not Applicable
Motor Letter Type	Cap Start, Induction Run
Output @ Frequency	.750 HP @ 60 HZ
Phase	1
Synchronous Speed @ Frequency	1800 RPM @ 60 HZ
Voltage @ Frequency	115.0 V @ 60 HZ 230.0 V @ 60 HZ
Agency Approvals	CSA UR
Ambient Temperature	40 °C
Auxillary Box	No Auxillary Box
Auxillary Box Lead Termination	None
Base Indicator	Rigid
Bearing Grease Type	Polyrex EM (-20F +300F)
Blower	None
Current @ Voltage	5.000 A @ 230.0 V 10.000 A @ 115.0 V
Design Code	N
Drip Cover	No Drip Cover
Duty Rating	CONT
Efficiency @ 100% Load	70.0 %
Electrically Isolated Bearing	Not Electrically Isolated
Feedback Device	NO FEEDBACK
Front Shaft Indicator	None
Heater Indicator	No Heater
High Voltage Full Load Amps	5.0 a
Insulation Class	F

## Part detail

Revision	D
Type	AC
Mech. spec.	35S576
Base	
Status	PRD/A
Elec. spec.	35WGG393
Layout	35LYS576
Eff. date	10-27-2023
CD Diagram	CD0001
Poles	04
Leads	6#18
Proprietary	False
Created date	08-01-2022

Inverter Code	Not Inverter
KVA Code	L
Lifting Lugs	No Lifting Lugs
Locked Bearing Indicator	Locked Bearing
Motor Lead Quantity/Wire Size	6 @ 18 AWG
Motor Lead Termination	Flying Leads
Motor Standards	NEMA
Motor Type	3522L
Mounting Arrangement	F1
Number of Poles	4
Overall Length	13.22 IN
Power Factor	69
Product Family	Wash Down
Pulley End Bearing Type	Sealed Bearing
Pulley Face Code	C-Face
Pulley Shaft Indicator	Standard
Rodent Screen	None
Service Factor	1.25
Shaft Diameter	0.625 IN
Shaft Ground Indicator	No Shaft Grounding
Shaft Rotation	Reversible
Shaft Slinger Indicator	Shaft Slinger
Speed	1750 rpm
Speed Code	Single Speed
Starting Method	Direct on line
Thermal Device - Bearing	None
Thermal Device - Winding	None
Vibration Sensor Indicator	No Vibration Sensor
Winding Thermal 1	None
Winding Thermal 2	None

**Nameplate**

<b>NP1496L</b>									
<b>CAT.NO.</b>	CWDL3507								
<b>SPEC.</b>	35S576G393								
<b>HP</b>	.75								
<b>VOLTS</b>	115/230								
<b>AMP</b>	10/5								
<b>RPM</b>	1750								
<b>FRAME</b>	56C		<b>HZ</b>	60		<b>PH</b>	1		
<b>SER.F.</b>	1.25	<b>CODE</b>	L	<b>DES</b>	N	<b>CLASS</b>	F		
<b>NEMA-NOM-EFF</b>	70	<b>PF</b>	69						
<b>RATING</b>	40C AMB-CONT								
<b>CC</b>									
<b>DE</b>	6205		<b>ODE</b>	6203					
<b>ENCL</b>	TEFC	<b>SN</b>							
	SFA 12.6/6.3								

**AC Induction Motor Performance Data**

Record # 89059

Typical performance - not guaranteed values

Winding: 35WGG393-R001		Type: 3522L	Enclosure: TEFC	
<b>Nameplate Data</b>		<b>115 V, 60 Hz: Low Voltage Connection</b>		
Rated Output (HP)	.75	Full Load Torque	2.24 LB-FT	
Volts	115/230	Start Configuration	direct on line	
Full Load Amps	8.7/4.35	Breakdown Torque	4.86 LB-FT	
R.P.M.	1720	Pull-up Torque	4 LB-FT	
Hz	60 Phase	1	Locked-rotor Torque	8.91 LB-FT
NEMA Design Code	N KVA Code	K	Starting Current	59.09 A
Service Factor (S.F.)		1.25	No-load Current	4.92 A
NEMA Nom. Eff.	70 Power Factor	79	Line-line Res. @ 25°C	1.14 Ω A Ph 1.85 Ω B Ph
Rating - Duty		40C AMB-CONT	Temp. Rise @ Rated Load	91°C
S.F. Amps		10.9/5.45	Temp. Rise @ S.F. Load	119°C
			Locked-rotor Power Factor	97
			Rotor inertia	0.159 lb-ft <sup>2</sup>

**Load Characteristics 115 V, 60 Hz, 0.75 HP**

% of Rated Load	25	50	75	100	125	150	S.F.
Power Factor	41	58	70	77	82	85	81
Efficiency	57.2	69.2	71.9	72.1	70	66	70.9
Speed	1784	1770	1754	1737	1716	1687	1716
Line amperes	5.24	6.06	7.22	8.64	10.38	12.49	10.3

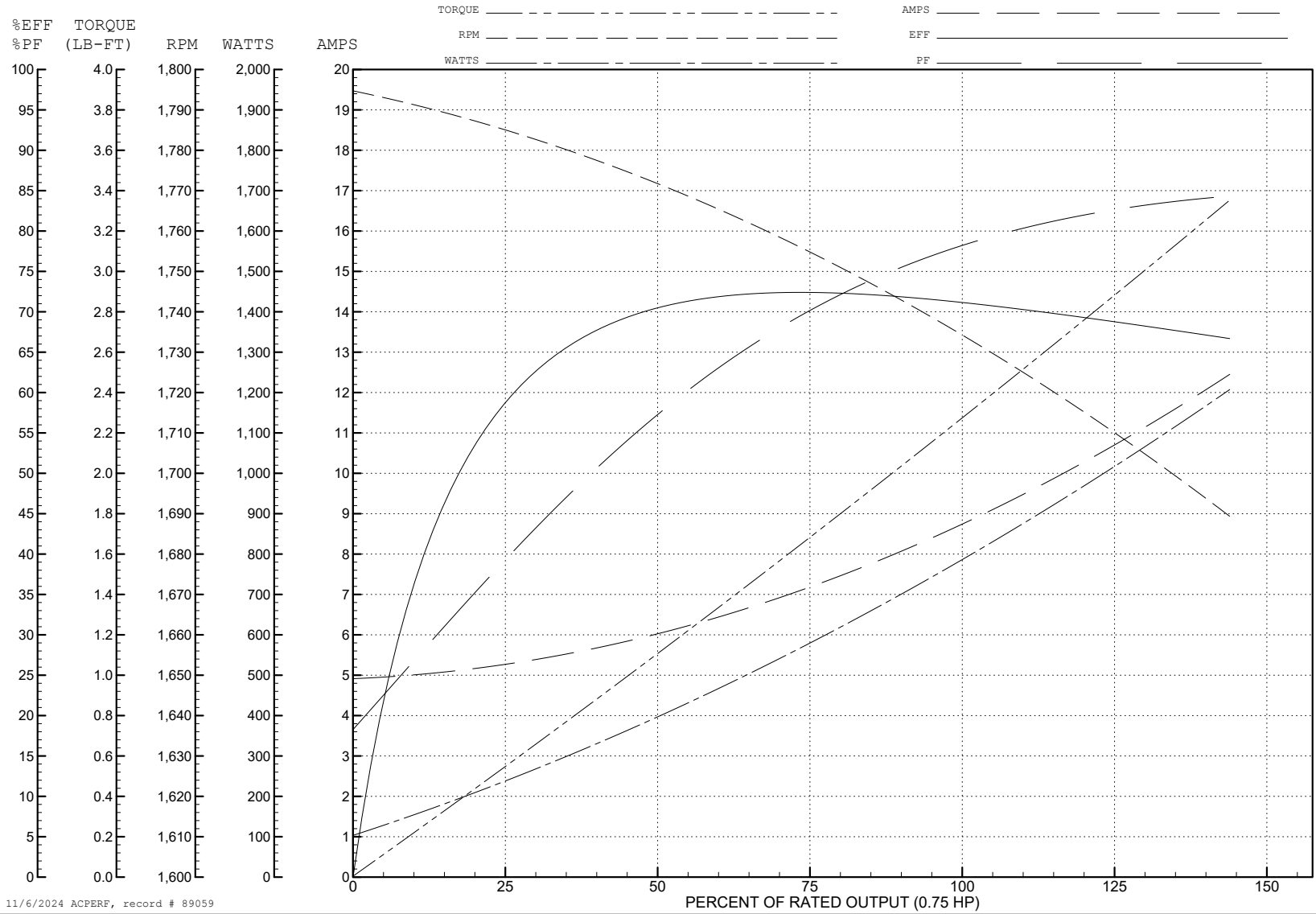
ABB Motors and Mechanical Inc.

WINDING # 35WGG393

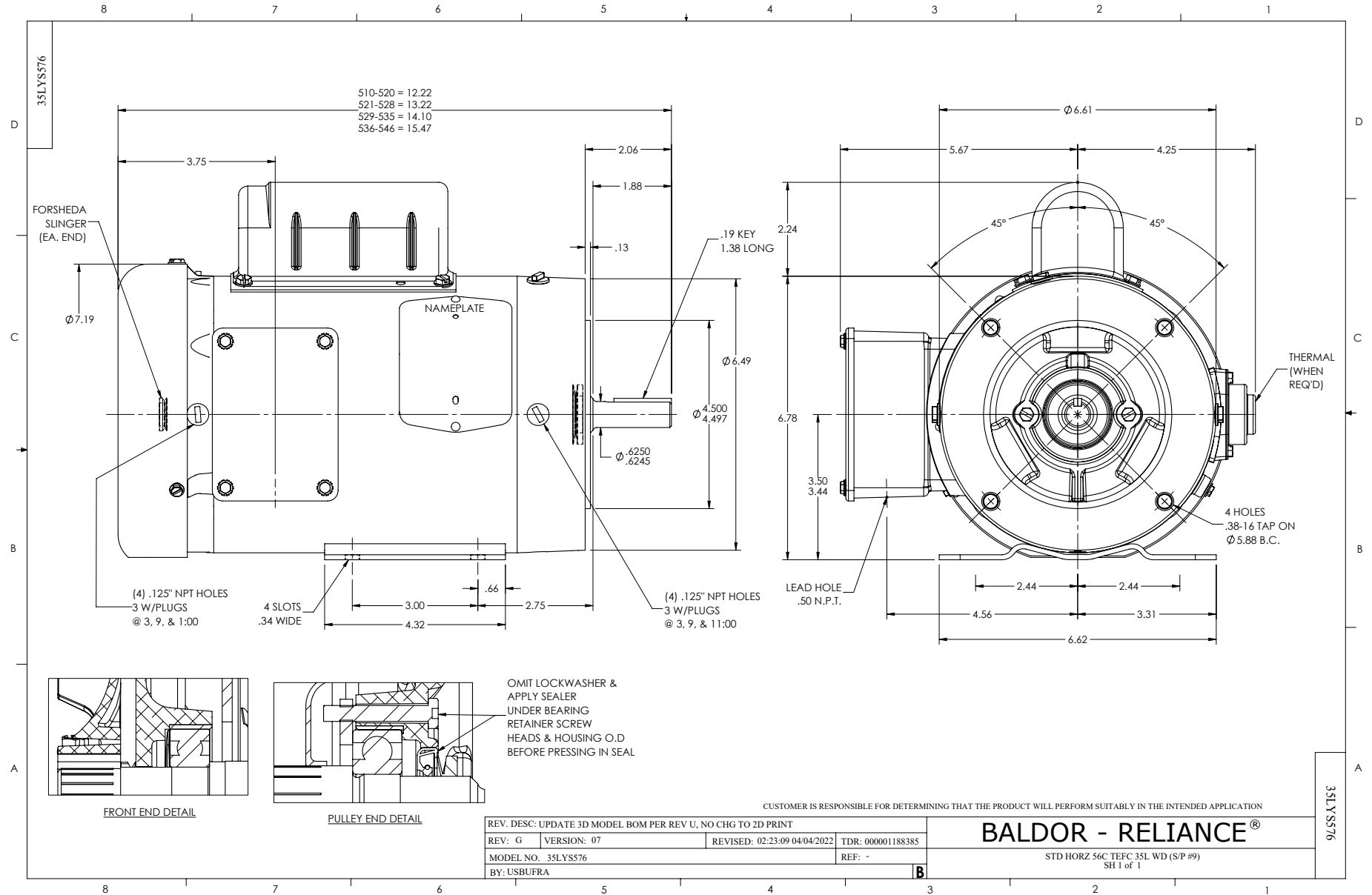
Typical performance - not guaranteed values.

0.75 HP 1 PH 60 HZ 1720 RPM 115 V 3522L

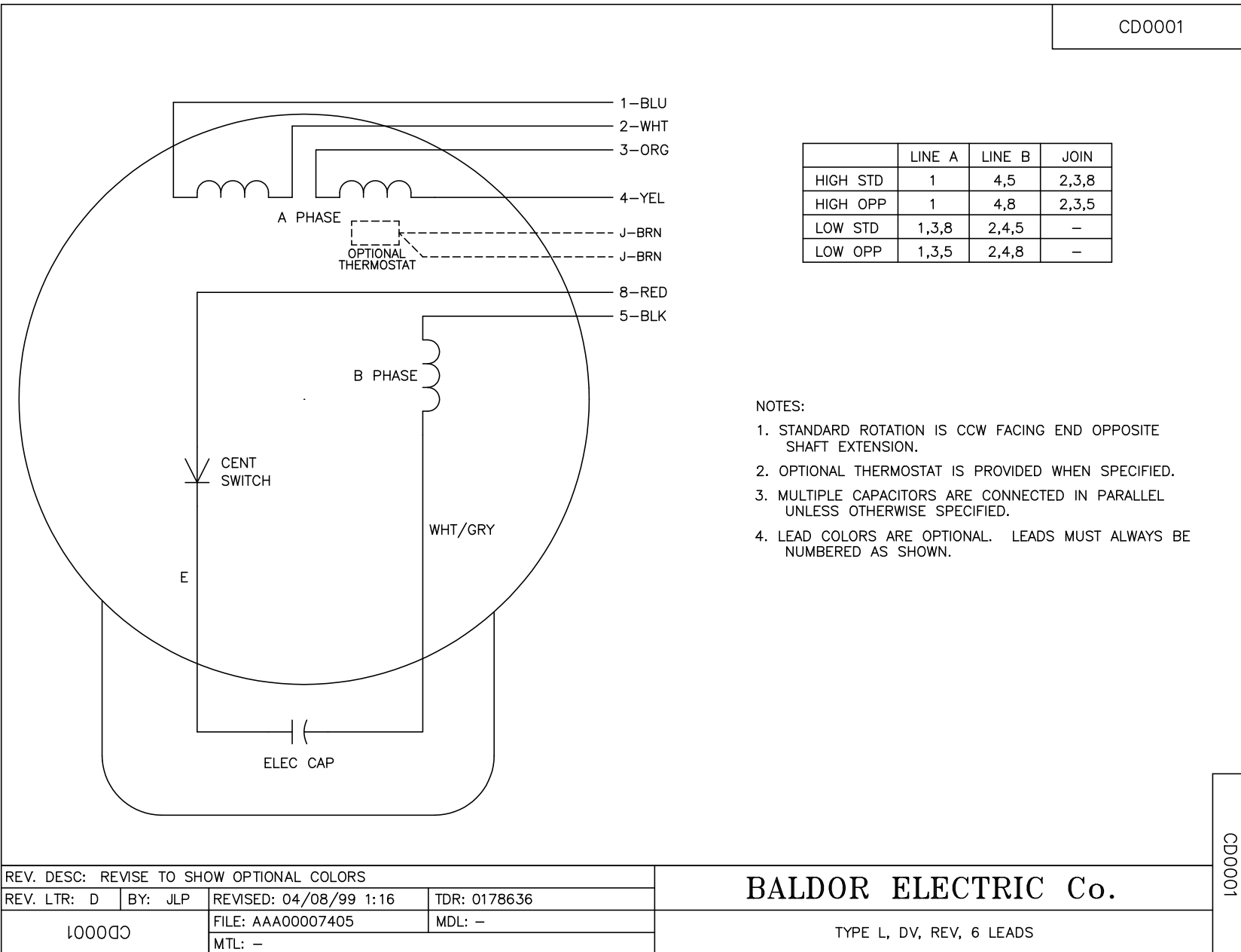
TORQUES (LB-FT): PO=4.86 PU=4 LR=8.91 LRA=59.09



11/6/2024 ACPERF, record # 89059



CD0001



**NOTES:**

1. STANDARD ROTATION IS CCW FACING END OPPOSITE SHAFT EXTENSION.
2. OPTIONAL THERMOSTAT IS PROVIDED WHEN SPECIFIED.
3. MULTIPLE CAPACITORS ARE CONNECTED IN PARALLEL UNLESS OTHERWISE SPECIFIED.
4. LEAD COLORS ARE OPTIONAL. LEADS MUST ALWAYS BE NUMBERED AS SHOWN.

CD0001

REV. DESC: REVISE TO SHOW OPTIONAL COLORS			
REV. LTR: D	BY: JLP	REVISED: 04/08/99 1:16	TDR: 0178636
100000		FILE: AAA00007405	MDL: -
		MTL: -	

**BALDOR ELECTRIC Co.**

TYPE L, DV, REV, 6 LEADS